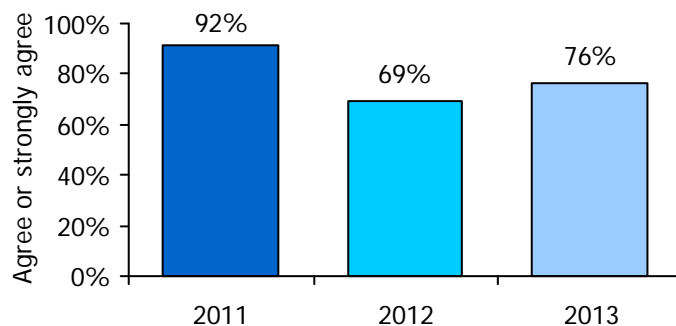
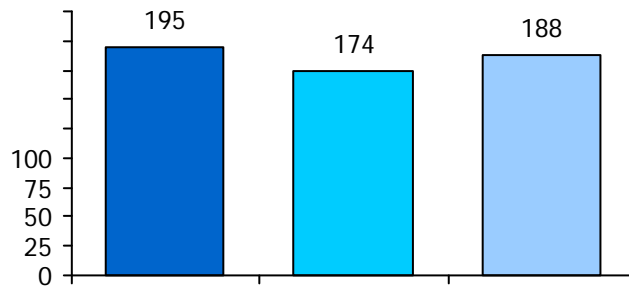


TELL AISD Staff Working Conditions Survey: Results for 2011-2013

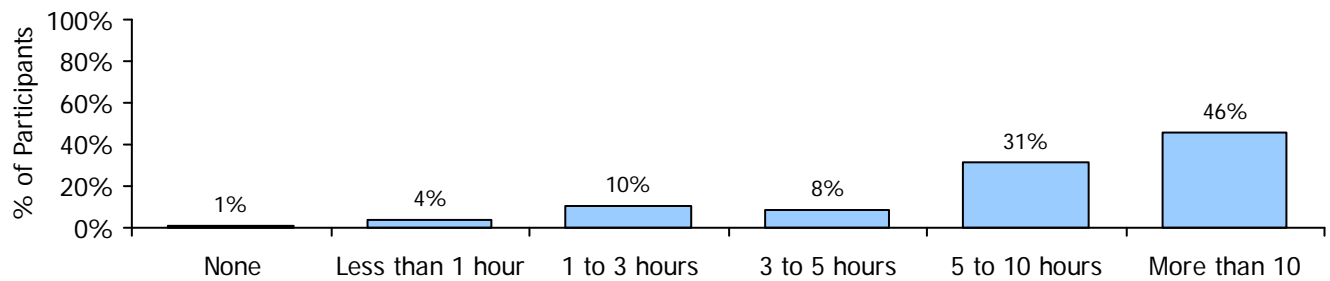
Akins High School

To do their jobs well, educators need supportive school environments where they are valued, are trusted, and can collaborate to improve instruction. The Teaching, Empowering, Leading and Learning (TELL) AISD Survey is a unique opportunity to gather information about school conditions from those whose views matter most—practicing educators. Respondents are asked for their perceptions on a variety of issues related to student achievement and staff retention, including Overall Climate, Use of Time, Leadership, Facilities and Resources, Student Behavior Management, Community Support, Professional Development, Instructional Practice, and Achievement Press. Participant counts are displayed in Figure 1.



Use of Time

In an average week, how many hours do you spend on school-related activities outside of the regular school work day (before or after school, and/or on weekends)?



Akins

	2011	Akins 2012		All HS 2013
Class sizes are reasonable such that teachers have the time available to meet the needs of all students.	42%	24%	34%	50%
The non instructional time provided for teachers in my school is sufficient.	71%	60%	71%	72%
	64%	50%	60%	60%

Akins

	2013	
	55%	76%
Facilities and resources	74%	84%
Community support and involvement	74%	89%
Managing student conduct	75%	77%
Teacher leadership	65%	87%
School leadership	59%	84%
Professional development	75%	88%
Instructional practices and support	69%	88%
New teacher support	63%	83%
Achievement Press *	72%	87%



	81%
	87%
Professional learning opportunities are aligned with the school's improvement plan.	86%
Professional development is differentiated to meet the needs of individual teachers.	47%
Professional development deepens teachers' content knowledge.	53%
Teachers are encouraged to reflect on their own practice.	88%
Follow up is provided from professional development in this	54%

Community Support and Engagement

	2011	Akins 2012	2013	ALL HS 2013
			28%	
			59%	
			71%	
			73%	
			88%	
			61%	
			56%	
Community members support teachers, contributing to their success with students.	62%		69%	
The community we serve is supportive of this school.	70%		74%	

Managing Student Conduct

	Akins			ALL HS
	2011	2012	2013	2013
Students at this school understand expectations for their conduct.	75%	78%	87%	83%
Students at this school follow rules of conduct.	53%	51%	59%	69%
Policies and procedures about student conduct are clearly understood by the faculty.	82%	81%	87%	84%
Administrators consistently enforce rules for student conduct.	60%	63%	73%	68%
Administrators support teachers' efforts to maintain discipline in the classroom.	77%	74%	84%	81%
Teachers consistently enforce rules for student conduct.	59%	60%	70%	73%
The faculty work in a school environment that is safe.	93%	90%	95%	94%
Non-teaching staff consistently enforce rules for student conduct.	73%	71%	76%	77%

Note: All items in this table include responses from teaching and non-teaching staff.

Achievement Press

	Akins			ALL HS
	2011	2012	2013	2013
The school sets high standards for academic performance.	90%	84%	94%	91%
Teachers in this school believe that their students have the ability to achieve academically.	93%	86%	91%	93%
Parents exert pressure to maintain high standards.	34%	33%	22%	56%
Achievement is recognized and acknowledged by the school.	93%	77%	82%	92%
Parents press for school improvement.	40%	36%	24%	60%
Students in this school can achieve the goals that have been set for them.	93%	89%	96%	95%
Students respect others who get good grades.	63%	70%	70%	81%
Students seek extra work so they can get get good grades.	43%	46%	42%	61%
Students try hard to improve on previous work.	41%	45%	45%	66%
The learning environment is orderly and serious.+	78%	75%	87%	85%

Note. +Item includes responses from teaching and non-teaching staff.

For more information about interpreting and using your TELL AISD data for school improvement, including data use guides, construct worksheets, and other school improvement planning tools, please visit:
http://stafftellaisd.org/Using_Your_Data