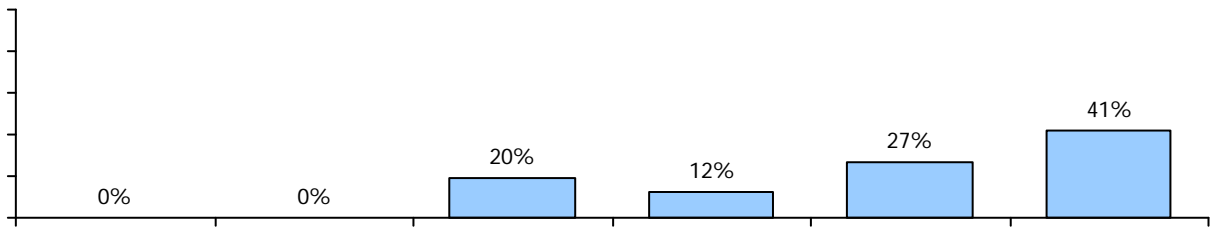




TELL AISD Staff Working Conditions Survey:
Results for 2011-2013
Allison Elementary School



The school leadership makes a sustained effort to address teacher concerns about:

	2011	Allison 2012	2013	ALL EL 2013
The use of time in my school	73%	100%	88%	80%
Facilities and resources	68%	86%	90%	91%
Community support and involvement	92%	89%	80%	90%
Managing student conduct	76%	70%	68%	82%
Teacher leadership	87%	93%	89%	89%
School leadership	74%	93%	88%	88%
Professional development	85%	100%	82%	90%
Instructional practices and support	85%	100%	90%	90%
New teacher support	76%	83%	68%	86%
Achievement Press	*	100%	86%	91%

Note. *New to the survey in Spring 2012.

Teacher Leadership

	2011	Allison 2012	2013	ALL EL 2013
Teachers are recognized as educational experts.	83%	96%	88%	85%
Teachers are trusted to make sound professional decisions about instruction.	83%	87%	95%	85%
Teachers are relied upon to make decisions about educational issues.	77%	93%	92%	86%
Teachers are encouraged to participate in school leadership roles.	90%	89%	92%	90%
The faculty has an effective process for making group decisions to solve problems.	59%	70%	71%	78%
In this school we take steps to solve problems.	65%	76%	85%	85%
Teachers are effective leaders in this school.	85%	83%	90%	90%
Teachers have an appropriate level of influence on decision making in this school.	*	70%	86%	78%

Note. *New to the survey in Spring 2012.

Professional Development

	2011	Allison		ALL EL 2013
		2012	2013	
Sufficient resources are available for professional development.	69%	72%	69%	85%
An appropriate amount of time is provided for professional development.	77%	93%	75%	77%
Professional development offerings are data driven.	79%	96%	88%	89%
Professional learning opportunities are aligned with the school's improvement plan.	82%	95%	88%	92%
Professional development is differentiated to meet the needs of individual teachers.	53%	69%	69%	72%
Professional development deepens teachers' content knowledge.	80%	92%	86%	85%
Teachers are encouraged to reflect on their own practice.	85%	100%	92%	92%
Follow up is provided from professional development in this school.	57%	50%	67%	75%
Professional development provides ongoing opportunities for teachers to work with colleagues to refine teaching practices.	74%	85%	81%	81%
Professional development is evaluated and results are communicated to teachers.	36%	50%	54%	68%
Professional development enhances teachers' abilities to implement instructional strategies that meet diverse student learning needs.	82%	89%	100%	89%
Professional development enhances teachers' abilities to improve student learning.	88%	93%	100%	91%

Campus and District Professional Development

	2013	
	At my campus	In the district
PD is differentiated to meet the needs of individual teachers.	73%	81%
PD deepens teachers' content knowledge.	87%	92%
PD enhances teachers' abilities to implement instructional strategies that meet diverse student learning needs.	85%	89%
PD enhances teachers' abilities to improve student learning.	97%	92%

Note. These items were new in 2013.

Community Support and Engagement

	2011	Allison 2012	2013	ALL EL 2013
			49%	
			95%	
			95%	
			95%	
			98%	
			92%	
			79%	
			87%	
<u>The community we serve is supportive of this school.</u>			92%	

	2011	2012	2013	ALL EL 2013
		76%	88%	
		63%	81%	
		78%	84%	
		76%	81%	
		89%	86%	
		92%	94%	
		89%	94%	
		91%	82%	

Achievement Press

	2011	Allison 2012	2013	ALL EL 2013
The school sets high standards for academic performance.	78%			
Teachers in this school believe that their students have the ability to achieve academically.	81%			
Parents exert pressure to maintain high standards.	32%			
Achievement is recognized and acknowledged by the school.	89%			
Parents press for school improvement.	36%			
Students in this school can achieve the goals that have been set for them.				