

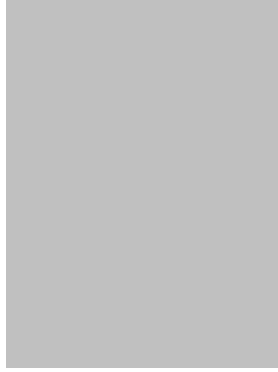


How many parents responded to the survey in 2003-2004 and 2004-2005, and how does this compare to the number of students in the population each year?

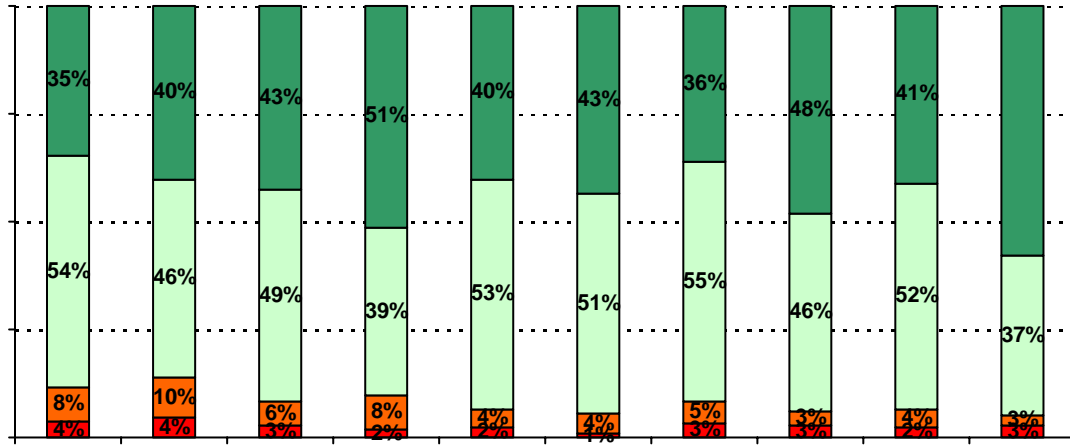
	Campus	District EL	District MS	District HS
# of Parents Responding in 2003-2004				
# of Students in 2003-2004				
<i>Ratio of Parent Respondents to Students, 2003-04</i>	3.7%	37.7 %	17.2 %	8.3 %
# of Parents Responding in 2004-2005				
# of Students in 2004-2005				
<i>Ratio of Parent Respondents to Students in 2004-05</i>	9.7%	27.9 %	12.8 %	13.5 %

What did parents report as their child's ethnicity, and how does this compare to the ethnic distribution of the student population?

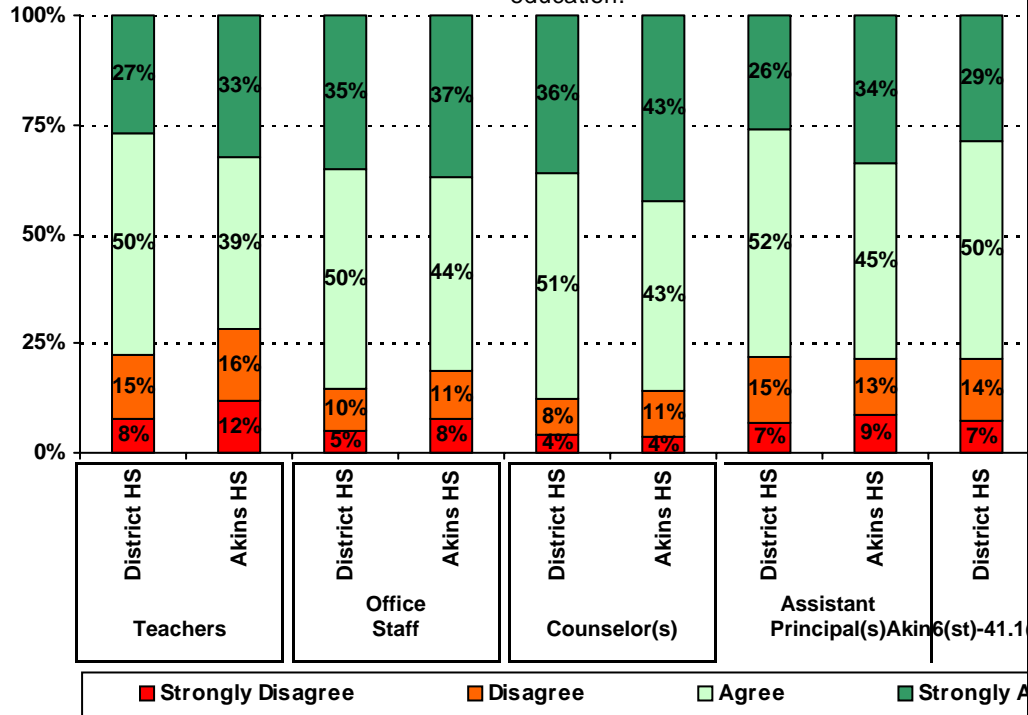
Ethnicity	% of Students, as Reported by Parent Respondents	% of Students in Campus Population
African American		
Asian		
Hispanic		
Native American		
White		



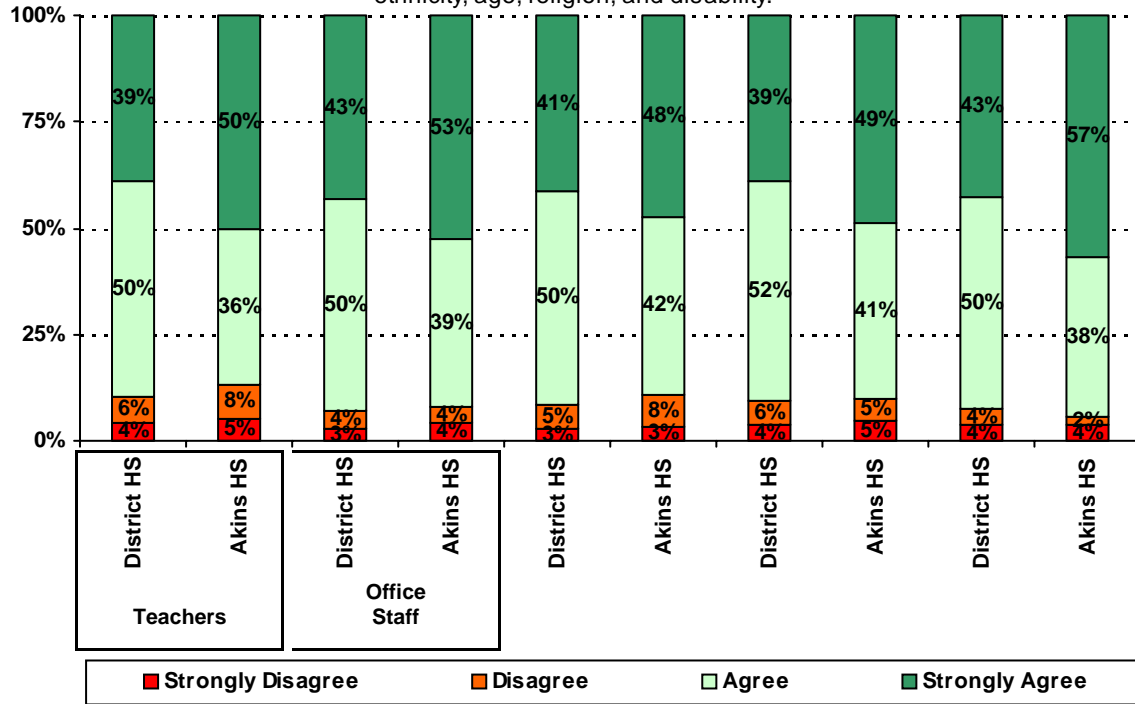
3. The following school staff treat me with courtesy and respect.

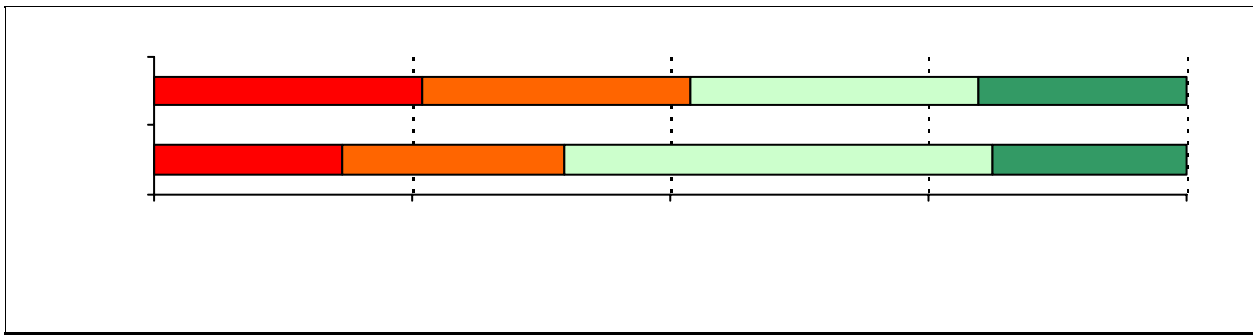


5. The following school staff have helped me to become more involved in my child's education.

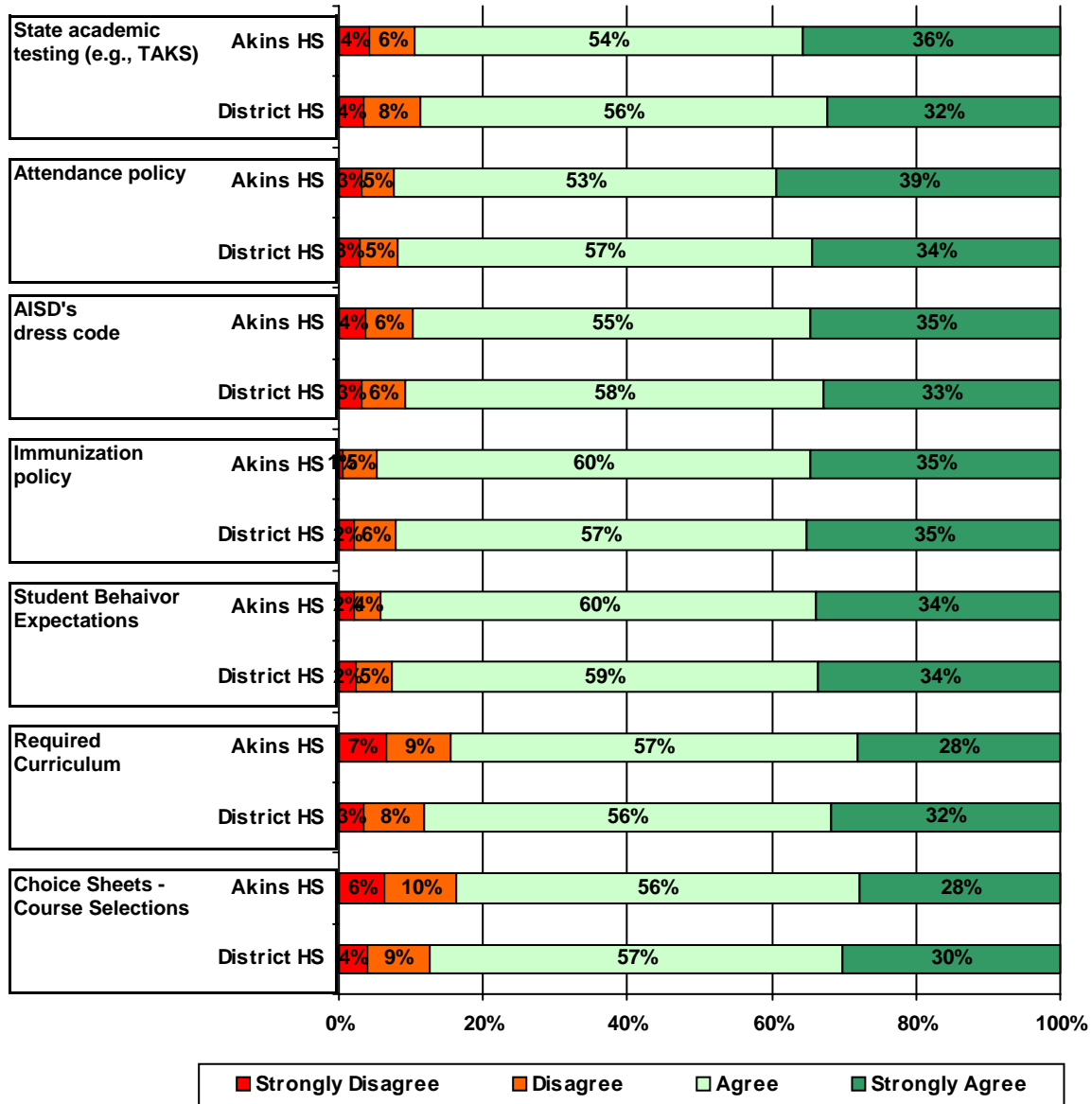


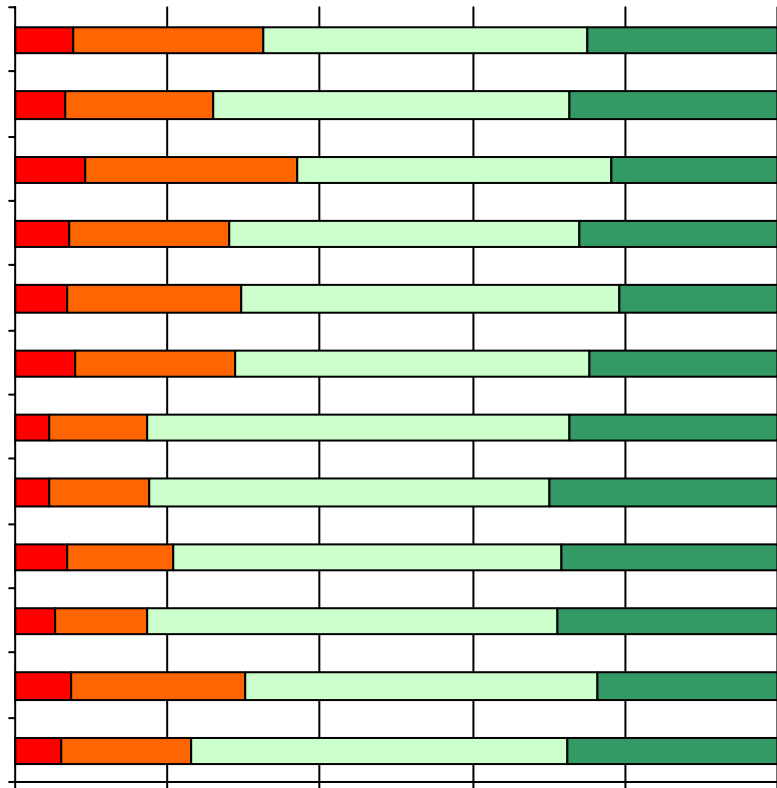
7. The following school staff treat my child fairly with respect to culture, gender, ethnicity, age, religion, and disability.



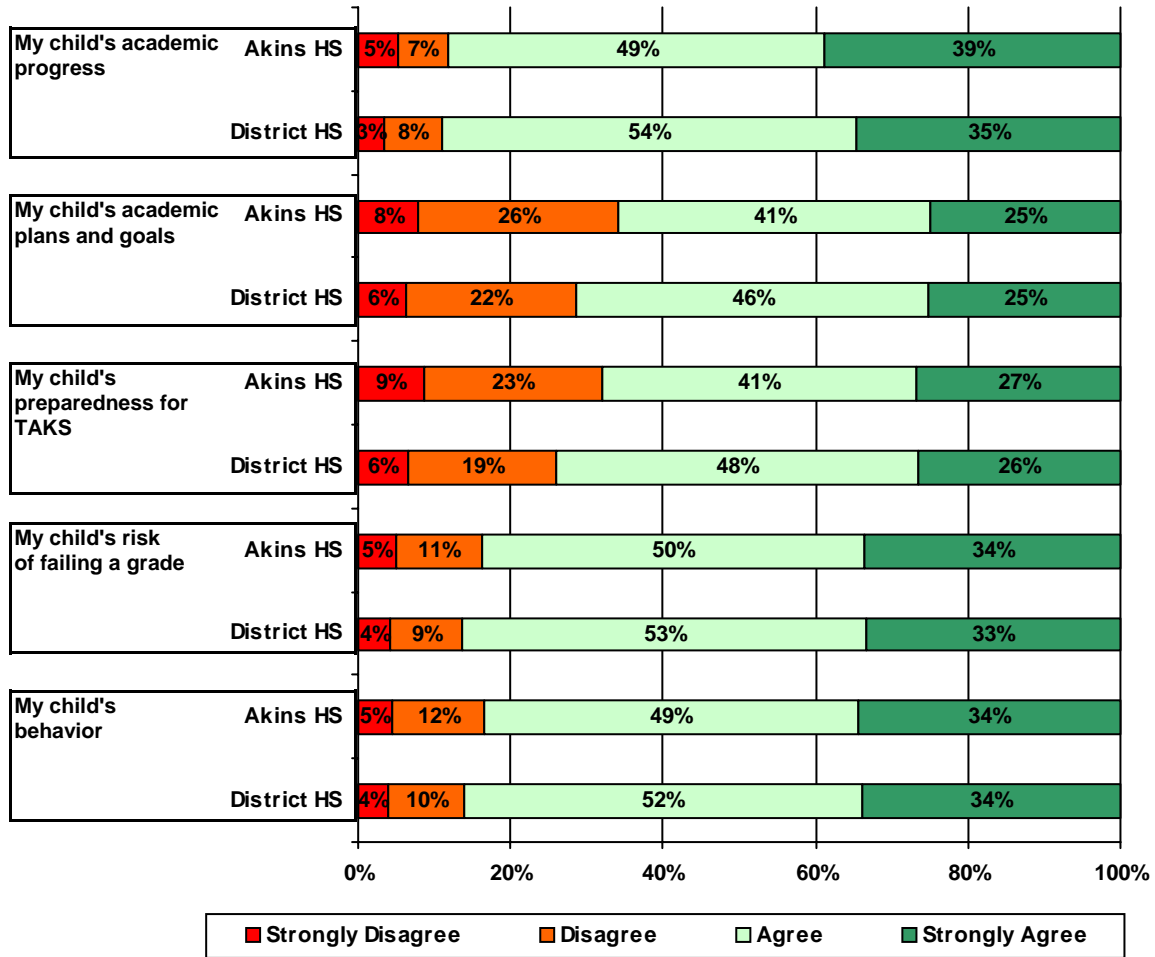


11. School staff provided me with information about the following school and district policies:



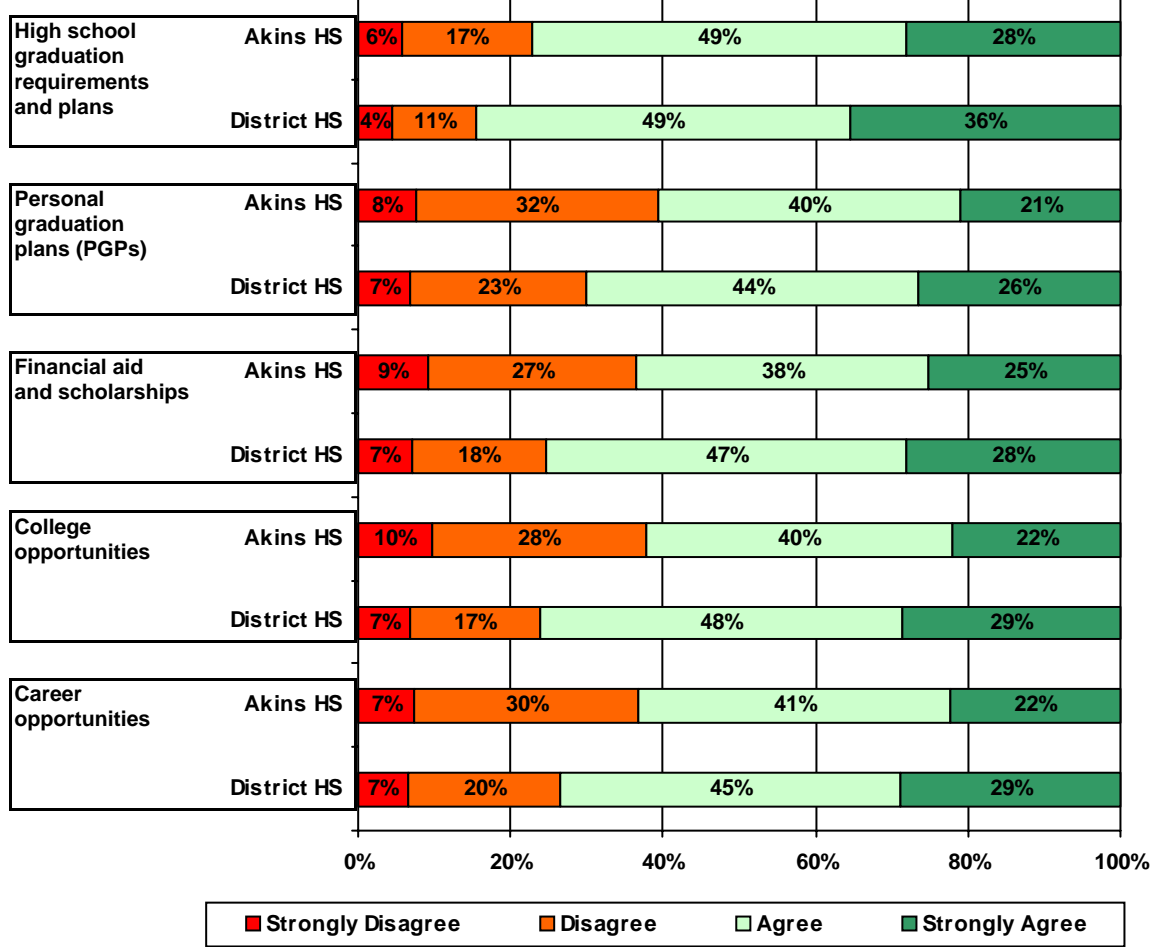


13. School staff provided me with the following information about my child:





14. School staff provided me with the following graduation and post-graduation information:



# Item Response Details

		Strongly Agree	Agree	Disagree	Strongly Disagree	Does Not Apply	Don't Know
3a.	n = 203						
3b.	n = 201						
3c.	n = 205						
3d.	n = 204						
3e.	n = 207						

		Strongly Agree	Agree	Disagree	Strongly Disagree	Does Not Apply	Don't Know
11a.	n = 202						
11b.	n = 204						
11c.	n = 200						
11d.	n = 200						
11e.	n = 0						
11f.	n = 0						
11g.	n = 203						
12a.	n = 196						
12b.	n = 192						
12c.	n = 195						
12d.	n = 196						
13a.	n = 205						
13b.	n = 200						
13c.	n = 199						
13d.	n = 200						
13e.	n = 200						

\*This item included an additional response option, 'I am not aware of AISD's academic benchmark testing.' An additional 16 parents selected this option.