

	Campus	District EL	District MS	District HS
# of Parents Responding in 2003-2004	129	16,070	2,721	1,640
# of Students in 2003-2004	1,956	42,594	15,819	19,847
<i>Ratio of Parent Respondents to Students, 2003-04</i>	6.6%	37.7 %	17.2 %	8.3 %
# of Parents Responding in 2004-2005	143	12,137	2,007	2,700
# of Students in 2004-2005	1,989	43,566	15,705	19,976
<i>Ratio of Parent Respondents to Students in 2004-05</i>	7.2%	27.9 %	12.8 %	13.5 %

Note: The ratio of parent respondents to students is listed above as a percentage for ease of interpretation; however, it is the number of parents who responded per 100 students enrolled.

What did parents report as their child's grade, and how does this compare to the grade distribution of the student population?

Grade	% of Students, as Reported by Parent Respondents	% of Students in Campus Population
6th	N/A	N/A
7th	N/A	N/A
8th	N/A	N/A
9th	34.1%	28.7%
10th	21%	24.1%
11th	29.7%	25.7%
12th	15.2%	21.6%

Note: Student population data are based on Fall 2003 and Fall 2004 PEIMS data submitted by the district to TEA, and may differ from the official AEIS report. Parents may have selected grade levels that are not applicable to your campus; this is likely due to confusion with the placement of bubbles on the scan form.

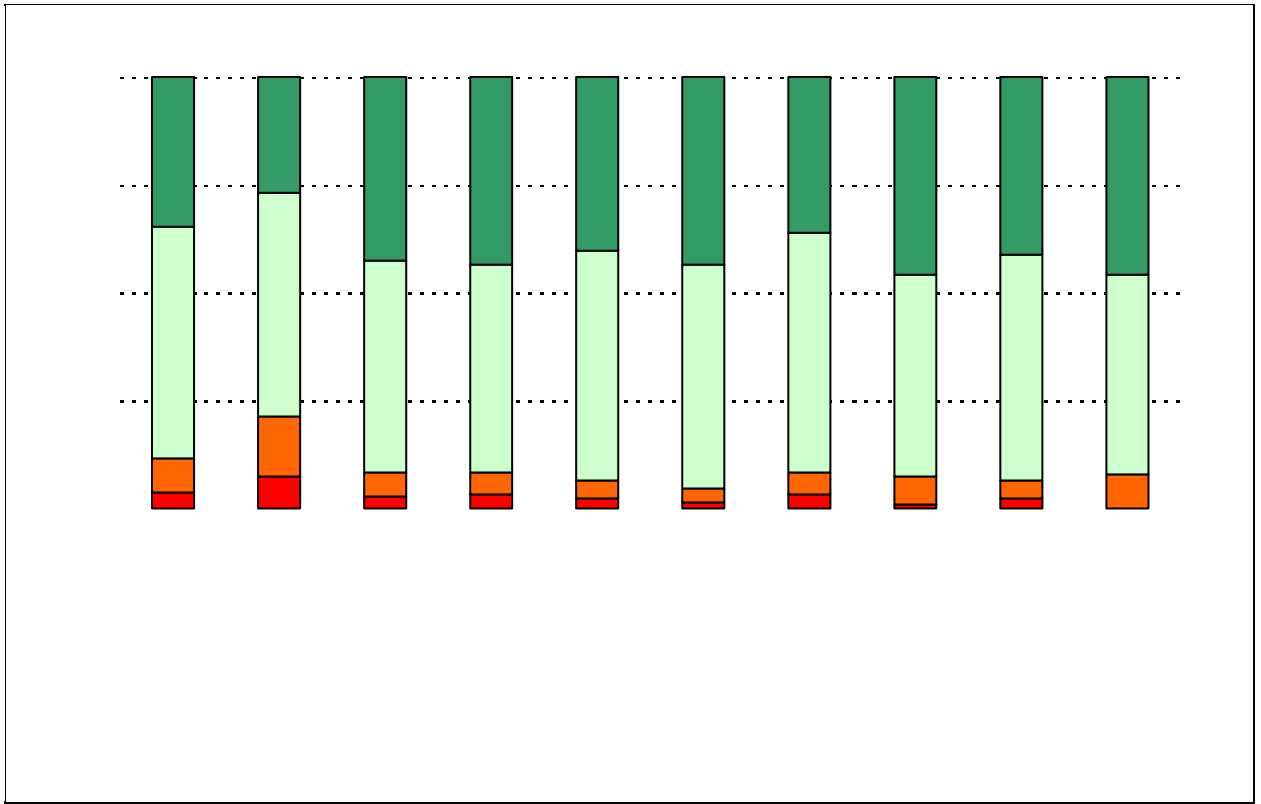
2004-2005 AISD Parent Survey Item Responses

Each survey item is presented below, followed by a bar graph containing results for your campus and for all campuses at your level.

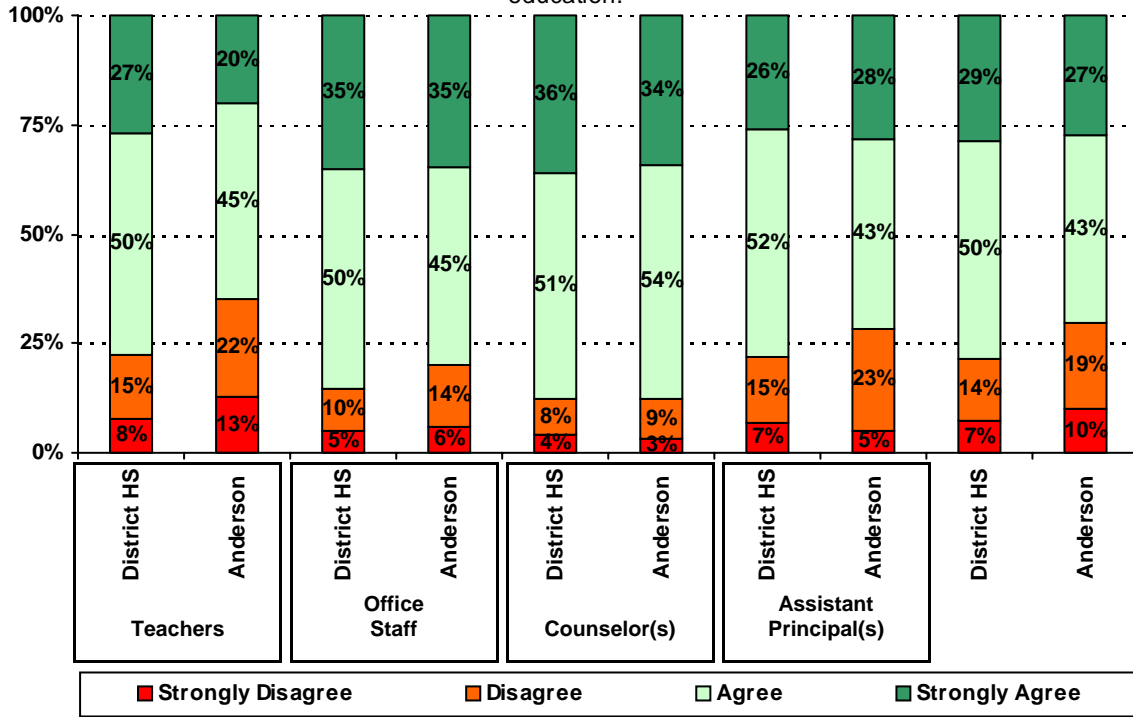
Please examine the results below to determine areas of strength and opportunities for improvement. Large percentages of "Strongly Agree" and "Agree" indicate areas in which your campus staff excel, and large percentages of "Disagree" and "Strongly Disagree" indicate areas for possible improvement.

In addition, please compare the percentage of parents from your campus selecting each response option with the percentage of all AISD parents selecting each response option. If your campus percentages are very different from the percentages reported districtwide, please consider potential reasons for discrepancies.

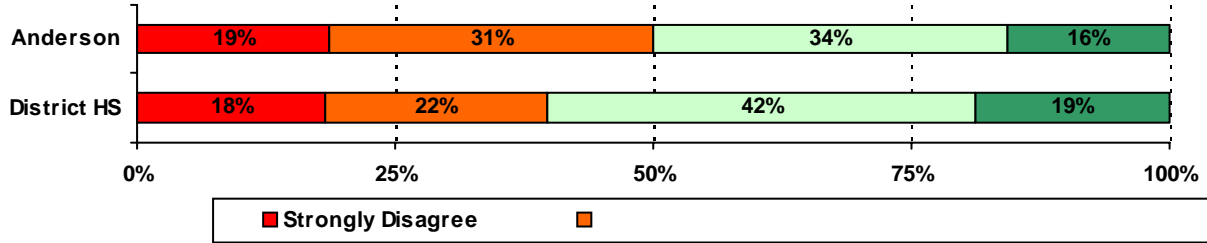
Please also review the results below for staff categories with consistently positive or negative responses. These responses may be used to identify opportunities for praise and areas for professional development.



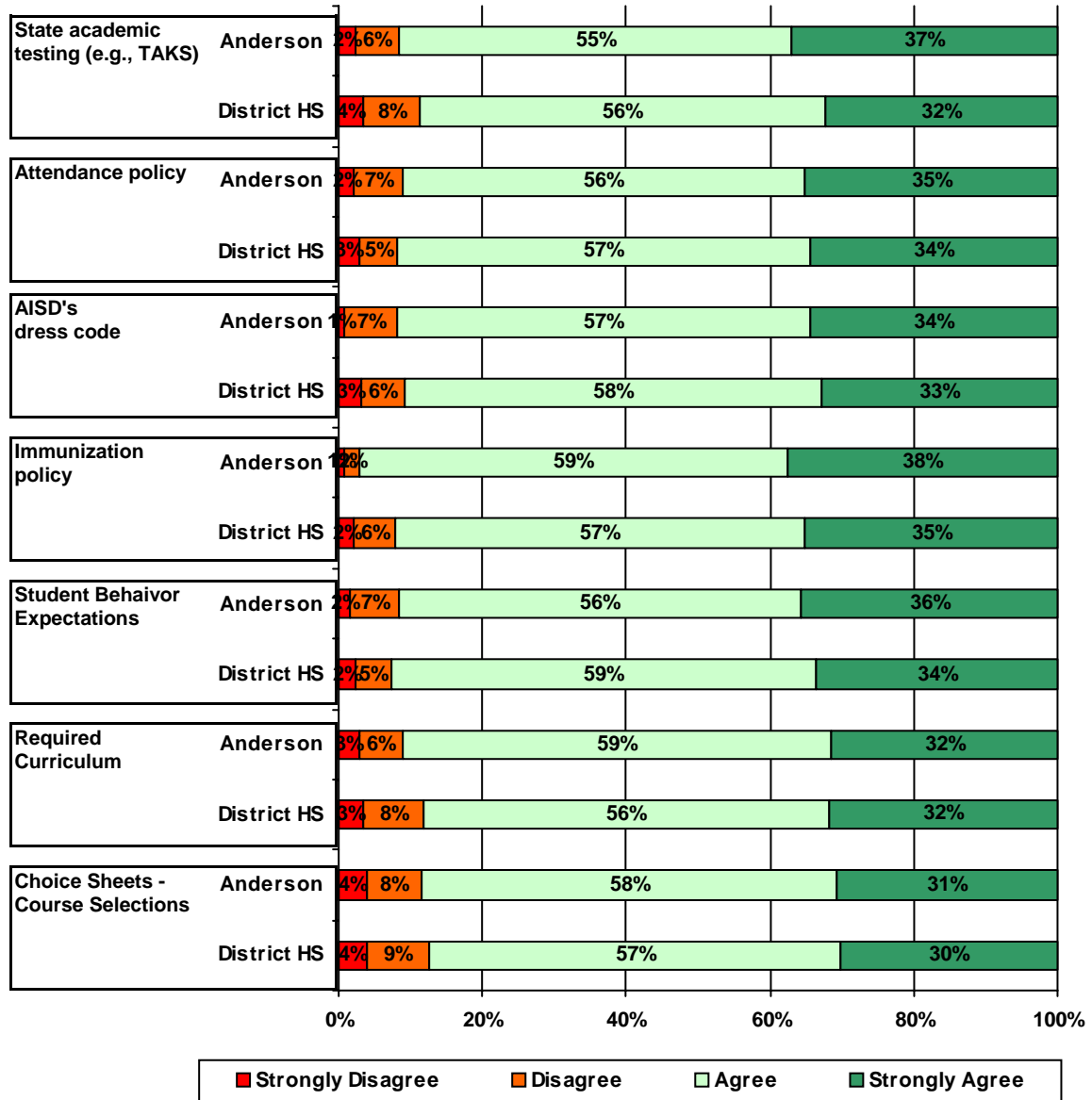
5. The following school staff have helped me to become more involved in my child's education.



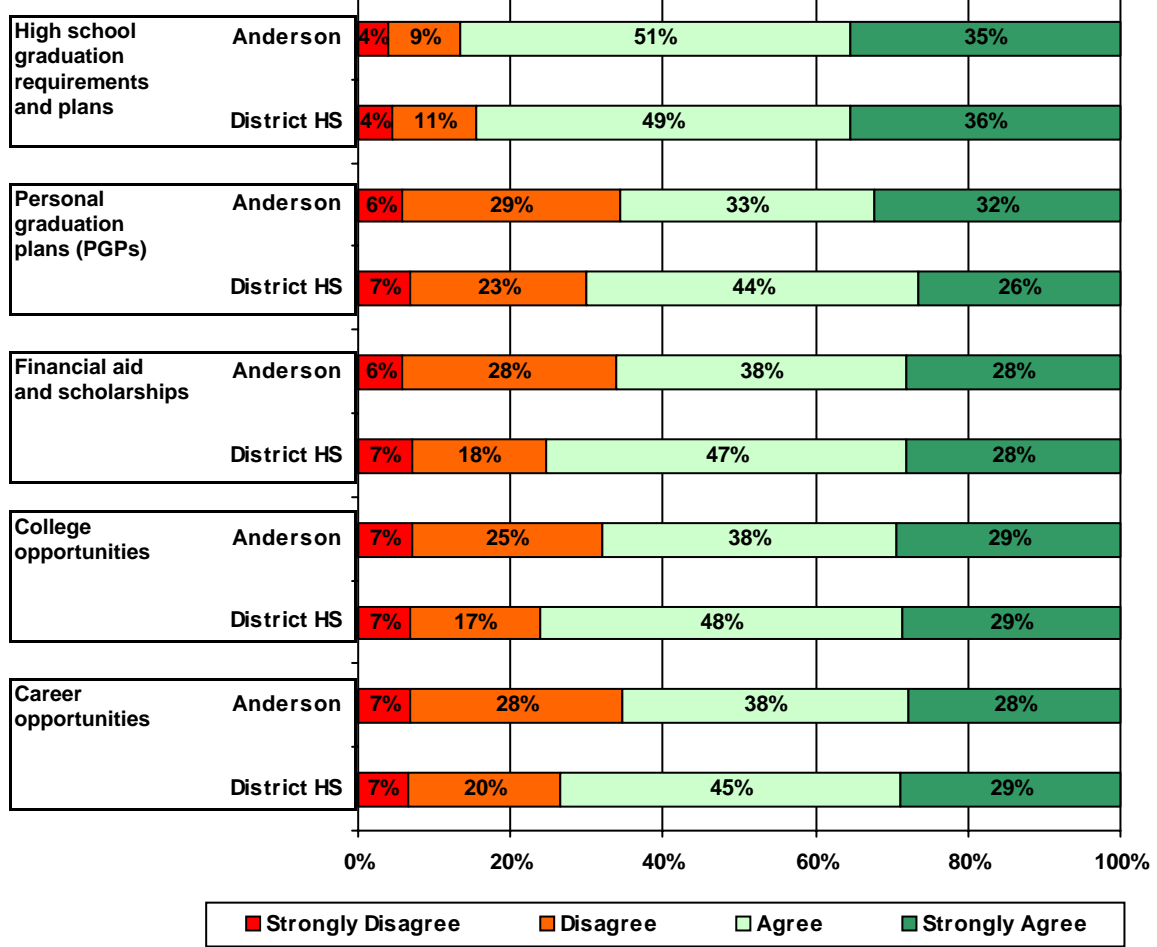
10. I am aware of the AISD Ombudsman.



11. School staff provided me with information about the following school and district policies:



14. School staff provided me with the following graduation and post-graduation information:



Number of Anderson High School Parent Responses, by Response Option (Continued)

		Strongly Agree	Agree	Disagree	Strongly Disagree	Does Not Apply	Don't Know
11a.	n = 140	48	71	8	3	2	8
11b.	n = 141	48	76	9	3	1	4
11c.	n = 140	46	77	10	1	0	6
11d.	n = 139	50	79	3	1	1	5
11e.	n = 0	0	0	0	0	0	0
11f.	n = 0	0	0	0	0	0	0
11g.	n = 141	47	74	9	2	0	9
12a.	n = 138	19	19	19	6	49	26
12b.	n = 139	14	18	17	7	57	26
12c.	n = 138	27	36	23	6	21	25
12d.	n = 138	30	64	15	5	12	13
13a.	n = 140	45	71	12	5	3	4
13b.	n = 140	33	42	35	11	5	14
13c.	n = 140	31	49	28	10	9	13
13d.	n = 140	27	60	13	6	24	10
13e.	n = 140	38	69	12	6	9	6

*This item included an additional response option, 'I am not aware of AISD's academic benchmark testing.' An additional 6 parents selected this option.