

2004-2005 AISD Parent Survey Results

Andrews Elementary School

The following report contains the results of the 2004-2005 AISD Parent Survey for your campus and all AISD schools acampo5selected each response option. Campus survey results should be examined for areas and opportunities for improvement. Results for all AISD schools at your level are presented to provide a reference for comparison.

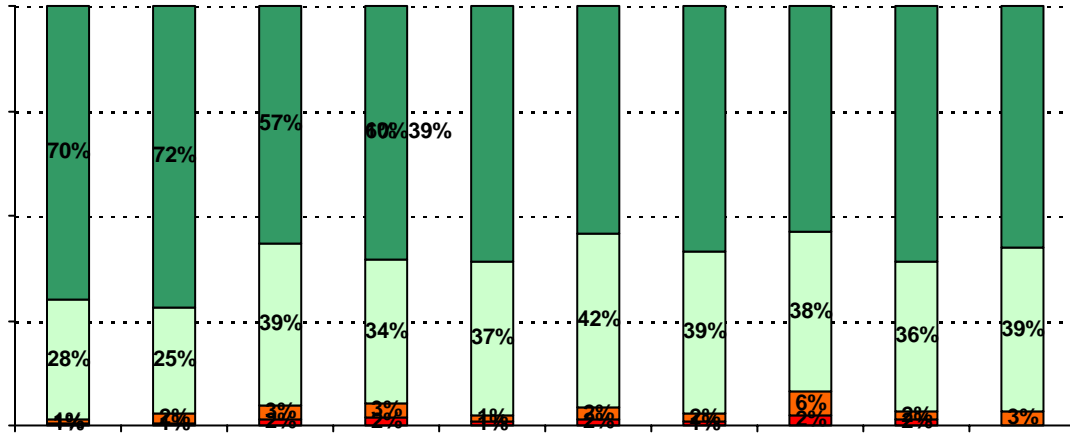
How many parents responded to the survey in 2003-2004 and 2004-2005, and how does this compare to the number of students in the population each year?

	Campus	District EL	District MS	District HS
# of Parents Responding in 2003-2004	171	16,070	2,721	1,640
# of Students in 2003-2004	596	42,594	15,819	19,847
<i>Ratio of Parent Respondents to Students, 2003-04</i>	28.7%	37.7 %	17.2 %	8.3 %
# of Parents Responding in 2004-2005	190	12,137	2,007	2,700
# of Students in 2004-2005	600	43,566	15,705	19,976
<i>Ratio of Parent Respondents to Students in 2004-05</i>	31.7%	27.9 %	12.8 %	13.5 %

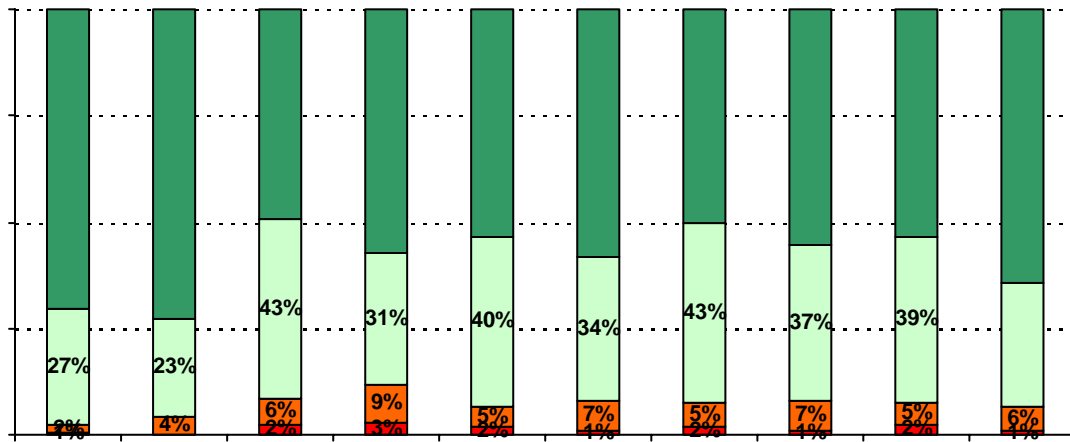
Note: The ratio of parent respondents to students is listed above as a percentage for ease of interpretation; however, it is the number of parents who responded per 100 students enrolled.

	% of Students, as Reported by Parent Respondents	% of Students in Campus Population
African American		32.3%
Asian		0.5%
Hispanic		65.2%
Native American		0.0%
White		2.0%

3. The following school staff treat me with courtesy and respect.



5. The following school staff have helped me to become more involved in my child's education.



.....

.....

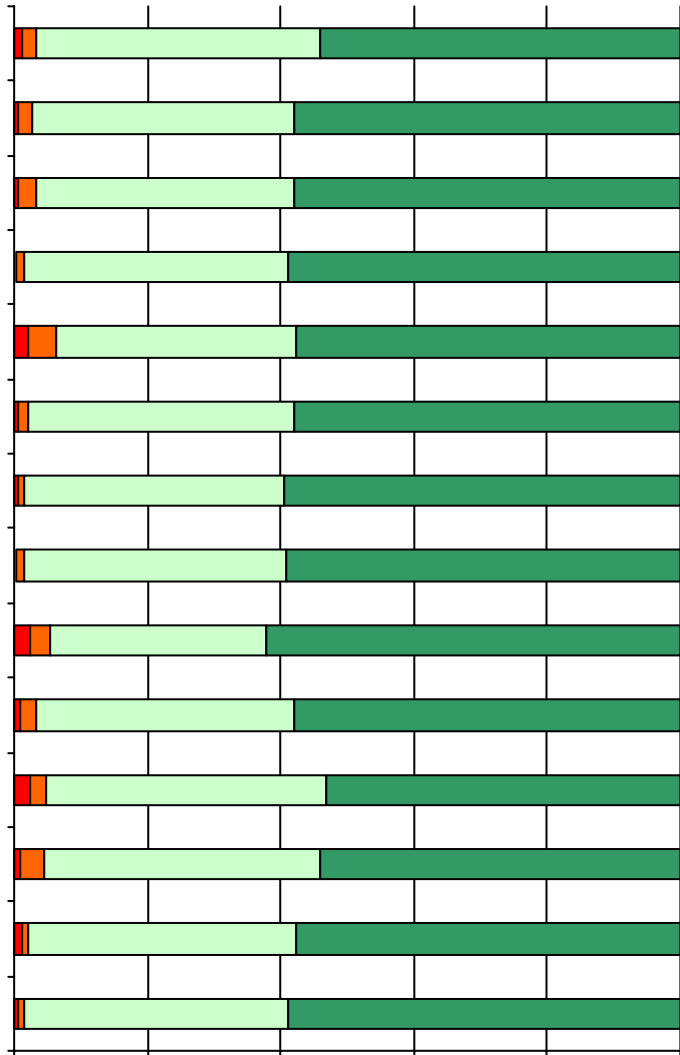
.....

.....

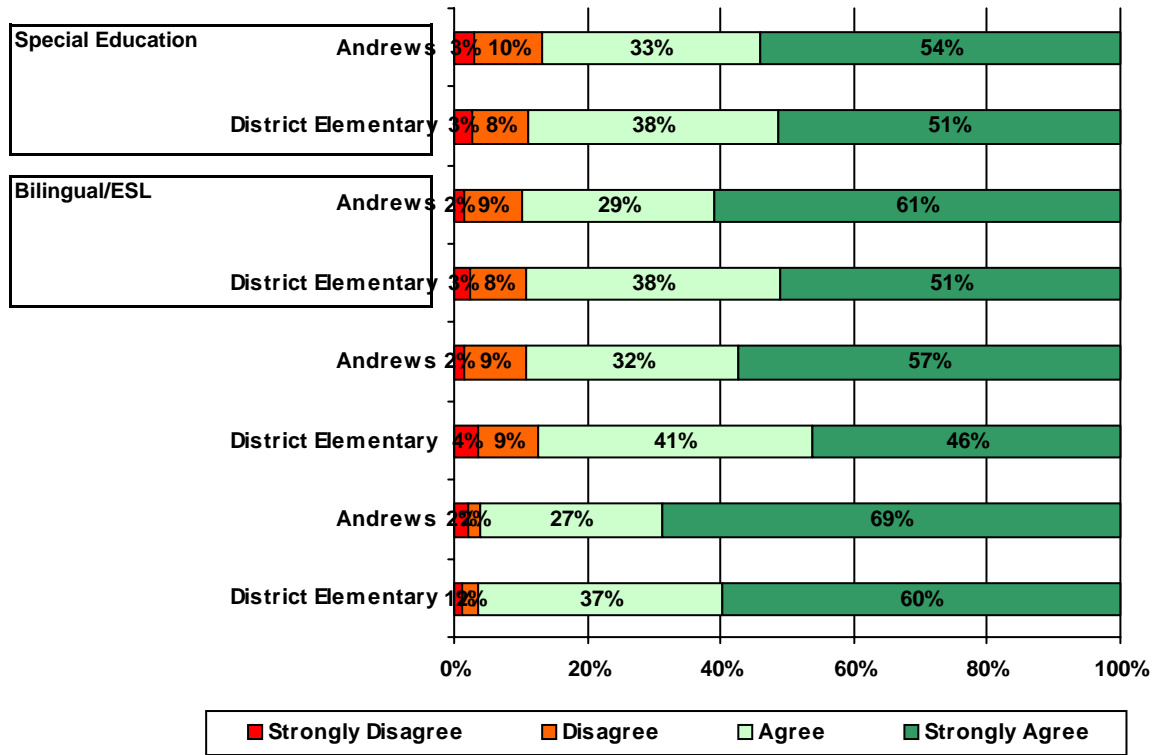
—

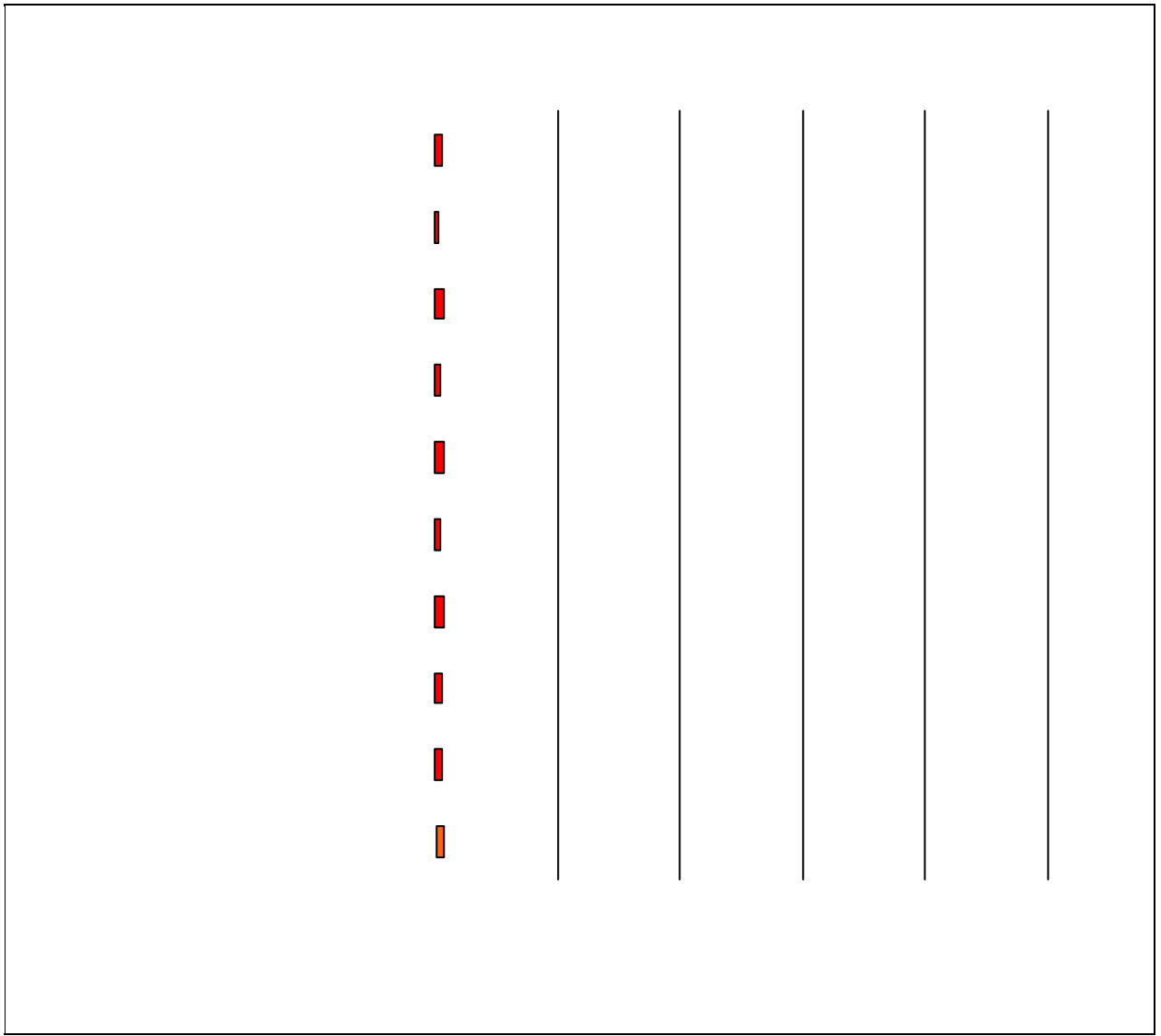
—

11. School staff provided me with information about the following school and diedededededided



12. School staff provided me with information about the following programs:





Item Response Details

Number of Andrews Elementary School Parent Responses, by Response Option

		Strongly Agree	Agree	Disagree	Strongly Disagree	Does Not Apply	Don't Know
4a.	n = 151	77	50	5	1	5	13
4b.	n = 147	61	53	5	1	7	20
		67	40	9	0	5	25
3d.	n = 160	91	52	5	3	4	5
3e.	n = 175	121	42	4	1	3	4
4a.	n = 151	77	50	5	1	5	13
4b.	n = 147	61	53	5	1	7	20
4c.	n = 146	67	40	9	0	5	25
4d.	n = 147	73	50	8	1	6	9
4e.	n = 175	115	48	6	0	1	5
5a.	n = 145	79	36	7	1	10	12
5b.	n = 142	62	41	8	1	10	20
5c.	n = 141	66	38	8	1	11	17
5d.	n = 139	64	35	10	3	14	13
5e.	n = 173	118	37	7	0	6	5
6a.	n = 151	67	55	5	1	9	14
6b.	n = 142	53	49	6	1	12	21
6c.	n = 140	53	48	3	2	11	23
6d.	n = 144	57	40	5	4	19	19
6e.	n = 167	99	49	4	2	6	7
7a.	n = 157	85	52	6	2	3	9
7b.	n = 148	71	46	9	2	5	15
7c.	n = 146	68	48	7	2	7	14
7d.	n = 148	78	47	8	4	4	7
7e.	n = 168	105	48	6	2	3	4

