



## 2004-2005 AISD Parent Survey Results

### Barrington Elementary School

The following report contains the results of the 2004-2005 AISD Parent Survey for your campus and all AISD schools acampo5selected each response option. Campus survey results should be examined for areas and opportunities for improvement. Results for all AISD schools at your level are presented to provide a reference for comparison.

**How many parents responded to the survey in 2003-2004 and 2004-2005, and how does this compare to the number of students in the population each year?**

	Campus	District EL	District MS	District HS
<b># of Parents Responding in 2003-2004</b>	257	16,070	2,721	1,640
<b># of Students in 2003-2004</b>	705	42,594	15,819	19,847
<i>Ratio of Parent Respondents to Students, 2003-04</i>	<b>36.5%</b>	<b>37.7 %</b>	<b>17.2 %</b>	<b>8.3 %</b>
<b># of Parents Responding in 2004-2005</b>	214	12,137	2,007	2,700
<b># of Students in 2004-2005</b>	781	43,566	15,705	19,976
<i>Ratio of Parent Respondents to Students in 2004-05</i>	<b>27.4%</b>	<b>27.9 %</b>	<b>12.8 %</b>	<b>13.5 %</b>

Note: The ratio of parent respondents to students is listed above as a percentage for ease of interpretation; however, it is the number of parents who responded per 100 students enrolled.

**What did parents report as their child's ethnicity, and how does this compare to the ethnic distribution of the student population?**

Ethnicity	% of Students, as Reported by Parent Respondents	% of Students in Campus Population
<b>African American</b>	10.2%	11.9%
<b>Asian</b>	0.6%	0.9%
<b>Hispanic</b>	85.0%	81.9%
<b>Native American</b>	0.6%	0.0%
<b>White</b>	3.6%	5.2%

**What did parents report as their child's grade, and how does this compare to the grade level distribution of the student population?**

<b>Grade</b>	<b>% of Students, as Reported by Parent Respondents</b>	<b>% of Students in Campus Population</b>
<b>EC</b>	0.5%	1.5%
<b>PK</b>	17.7%	14.0%
<b>K</b>	10.8%	14.9%
<b>1st</b>	20.7%	16.8%
<b>2nd</b>	10.8%	13.7%
<b>3rd</b>	16.7%	11.8%
<b>4th</b>	13.8%	12.9%
<b>5th</b>	6.9%	10.2%
<b>6th</b>	2%	4.2%

Note: Student population data are based on Fall 2003 and Fall 2004 PEIMS data submitted by the district to TEA, and may differ from the official AEIS report.

### 2004-2005 AISD Parent Survey Item Responses

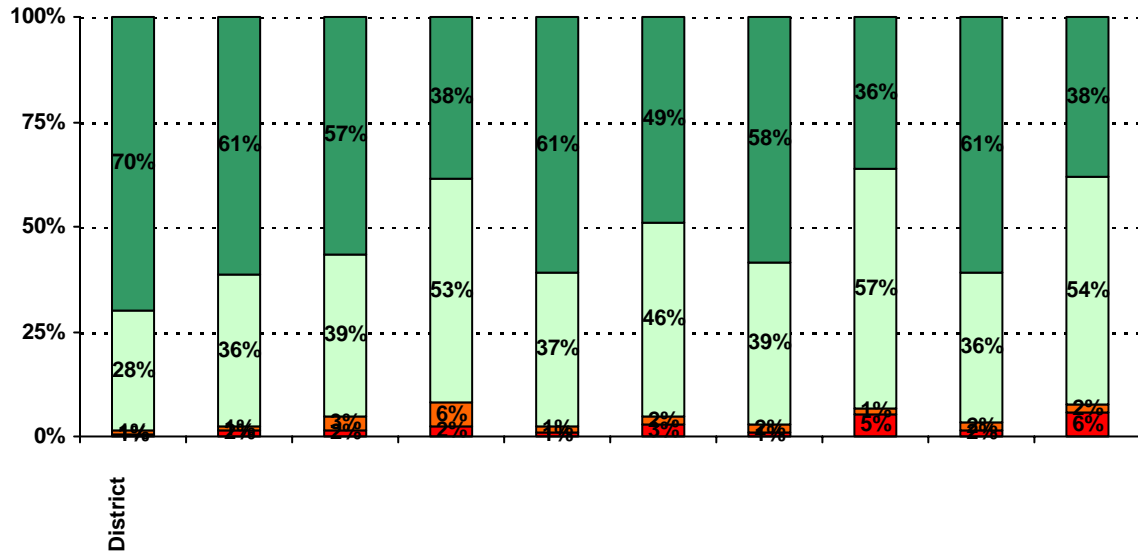
Each survey item is presented below, followed by a bar graph containing results for your campus and for all campuses at your level.

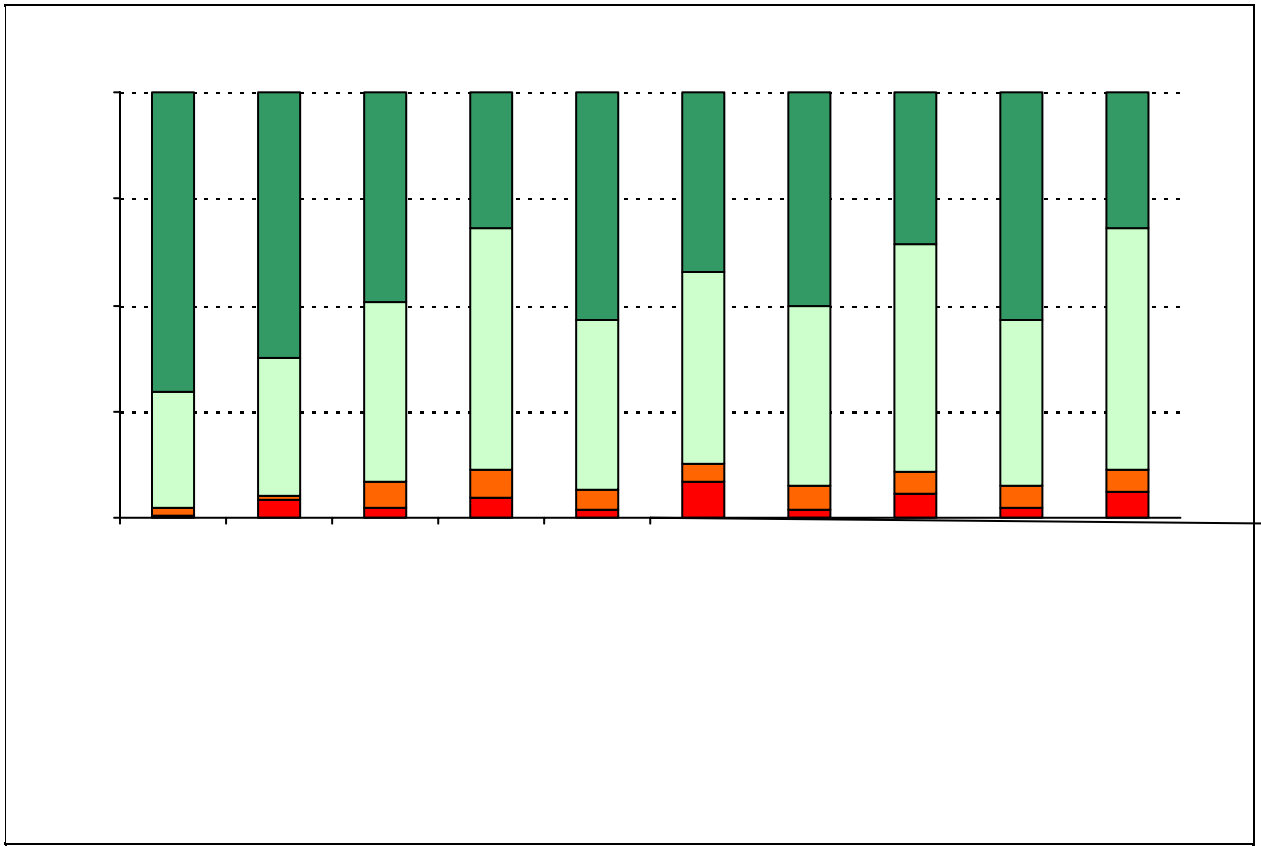
Please examine the results below to determine areas of strength and opportunities for improvement. Large percentages of "Strongly Agree" and "Agree" indicate areas in which your campus staff excel, and large percentages of "Disagree" and "Strongly Disagree" indicate areas for possible improvement.

In addition, please compare the percentage of parents from your campus selecting each response option with the percentage of all AISD parents selecting each response option. If your campus percentages are very different from the percentages reported districtwide, please consider potential reasons for discrepancies.

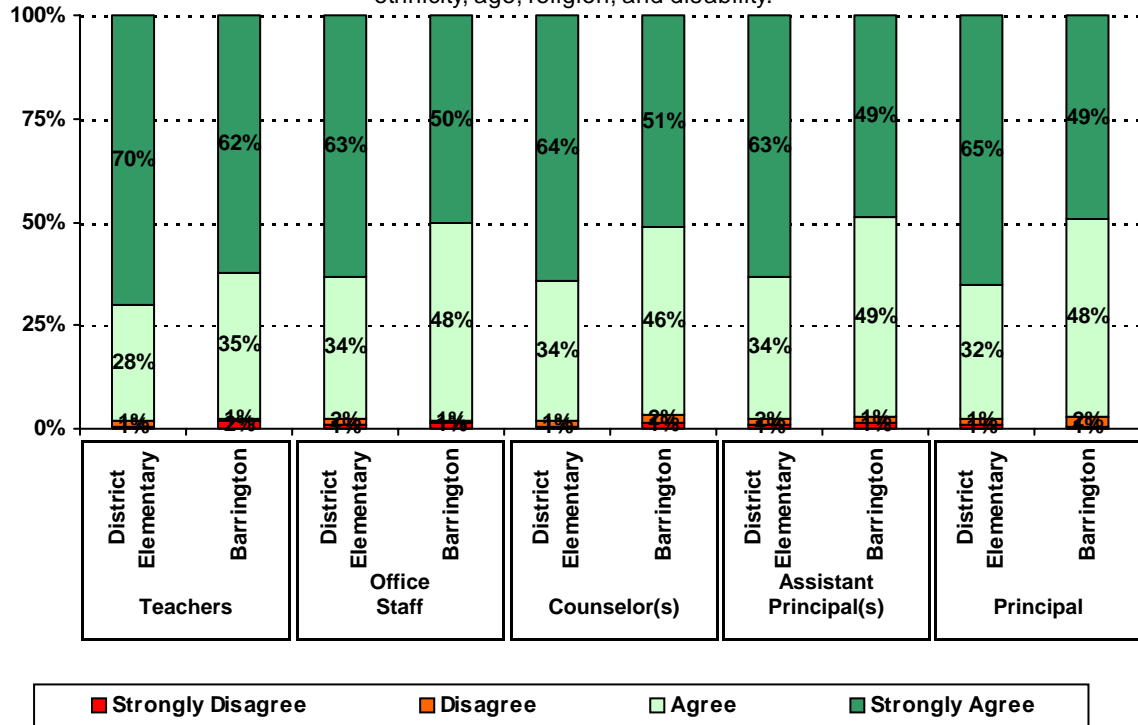
Please also review the results below for staff categories with consistently positive or negative responses. These responses may be used to identify opportunities for praise and areas for professional development.

3. The following school staff treat me with courtesy and respect.

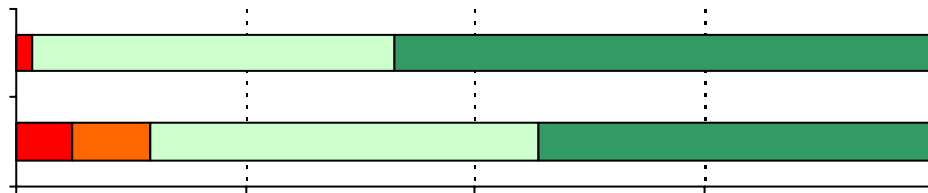


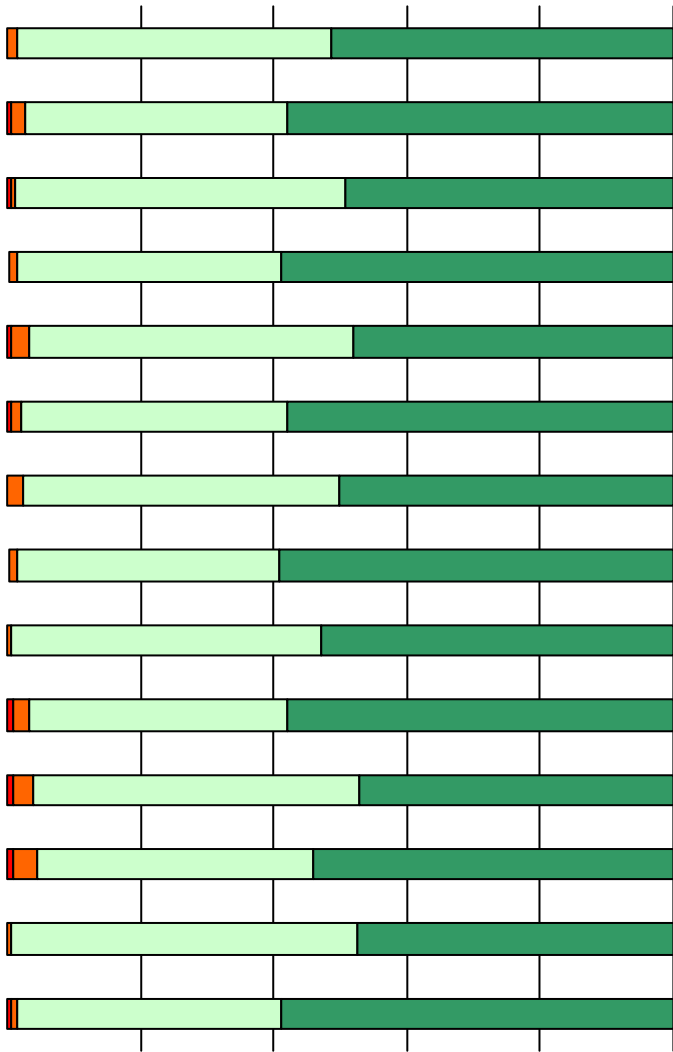


7. The following school staff treat my child fairly with respect to culture, gender, ethnicity, age, religion, and disability.

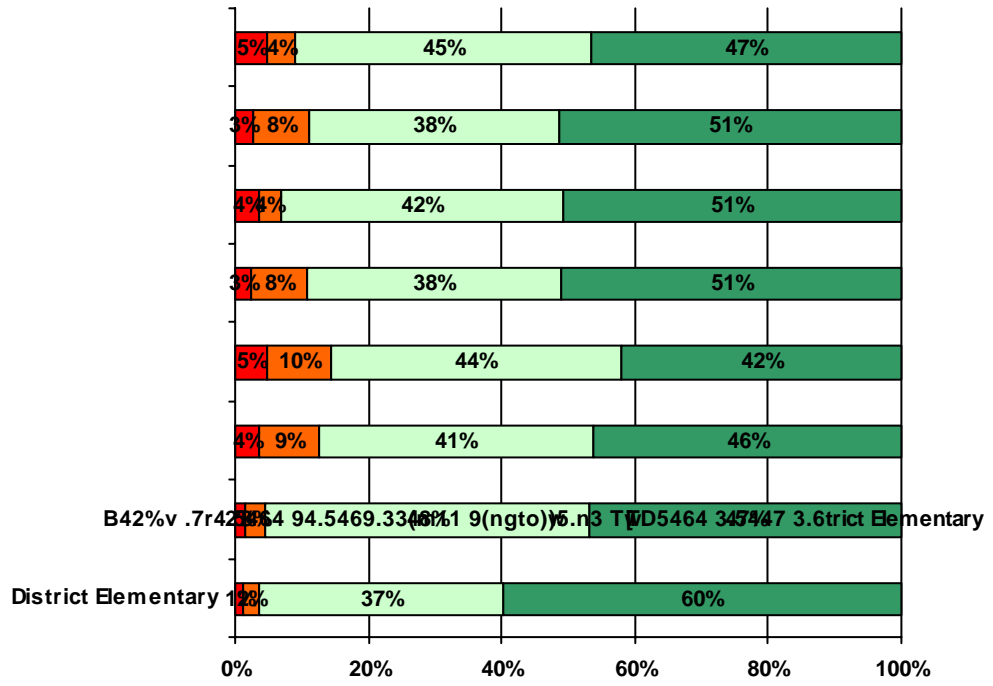


8. AISD's academic...





12. School staff provided me with information about the following programs:







## Item Response Details

Number of Barrington Elementary School Parent Responses, by Response Option

		Strongly Agree	Agree	Disagree	Strongly Disagree	Does Not Apply	Don't Know
<b>3a.</b>	<b>n = 194</b>	58	83	3	9	11	30
<b>3b.</b>	<b>n = 179</b>	55	86	2	8	7	21
<b>3c.</b>	<b>n = 182</b>	65	61	2	4	12	38
<b>3d.</b>	<b>n = 185</b>	65	90	10	4	5	11
<b>3e.</b>	<b>n = 202</b>	118	69	2	3	3	7
<b>4a.</b>	<b>n = 182</b>	50	76	4	5	14	33
<b>4b.</b>	<b>n = 177</b>	56	70	3	5	14	29
<b>4c.</b>	<b>n = 179</b>	60	63	6	6	9	35
<b>4d.</b>	<b>n = 180</b>	59	82	9	4	9	17
<b>4e.</b>	<b>n = 192</b>	108	71	1	5	4	3
<b>5a.</b>	<b>n = 172</b>	42	75	7	8	12	28
<b>5b.</b>	<b>n = 170</b>	46	69	7	7	12	29
<b>5c.</b>	<b>n = 176</b>	56	60	6	11	10	33
<b>5d.</b>	<b>n = 173</b>	43	76	9	6	16	23
<b>5e.</b>	<b>n = 191</b>	116	60	2	8	2	3
<b>6a.</b>	<b>n = 175</b>	44	69	4	4	15	39
<b>6b.</b>	<b>n = 174</b>	48	61	3	4	16	42
<b>6c.</b>	<b>n = 176</b>	47	67	4	4	15	39
<b>6d.</b>	<b>n = 174</b>	42	70	6	3	16	37
<b>6e.</b>	<b>n = 191</b>	101	69	1	3	6	11
<b>7a.</b>	<b>n = 181</b>	74	72	3	1	6	25
<b>7b.</b>	<b>n = 174</b>	69	69	2	2	7	25
<b>7c.</b>	<b>n = 179</b>	76	68	3	2	5	25
<b>7d.</b>	<b>n = 177</b>	76	72	1	2	6	20
<b>7e.</b>	<b>n = 197</b>	118	66	1	4	4	4
<b>*8.</b>	<b>n = 166</b>	71	48	0	2	6	9
<b>9.</b>	<b>n = 202</b>	93	88	6	1	7	7
<b>10.</b>	<b>n = 189</b>	38	48	10	8	9	76

