

2004-2005 AISD Parent Survey Results

Campbell Elementary School

The following report contains the results of the 2004-2005 AISD Parent Survey for your campus and all AISD schools acampo5selected each response option. Campus survey results should be examined for areas and opportunities for improvement. Results for all AISD schools at your level are presented to provide a reference for comparison.

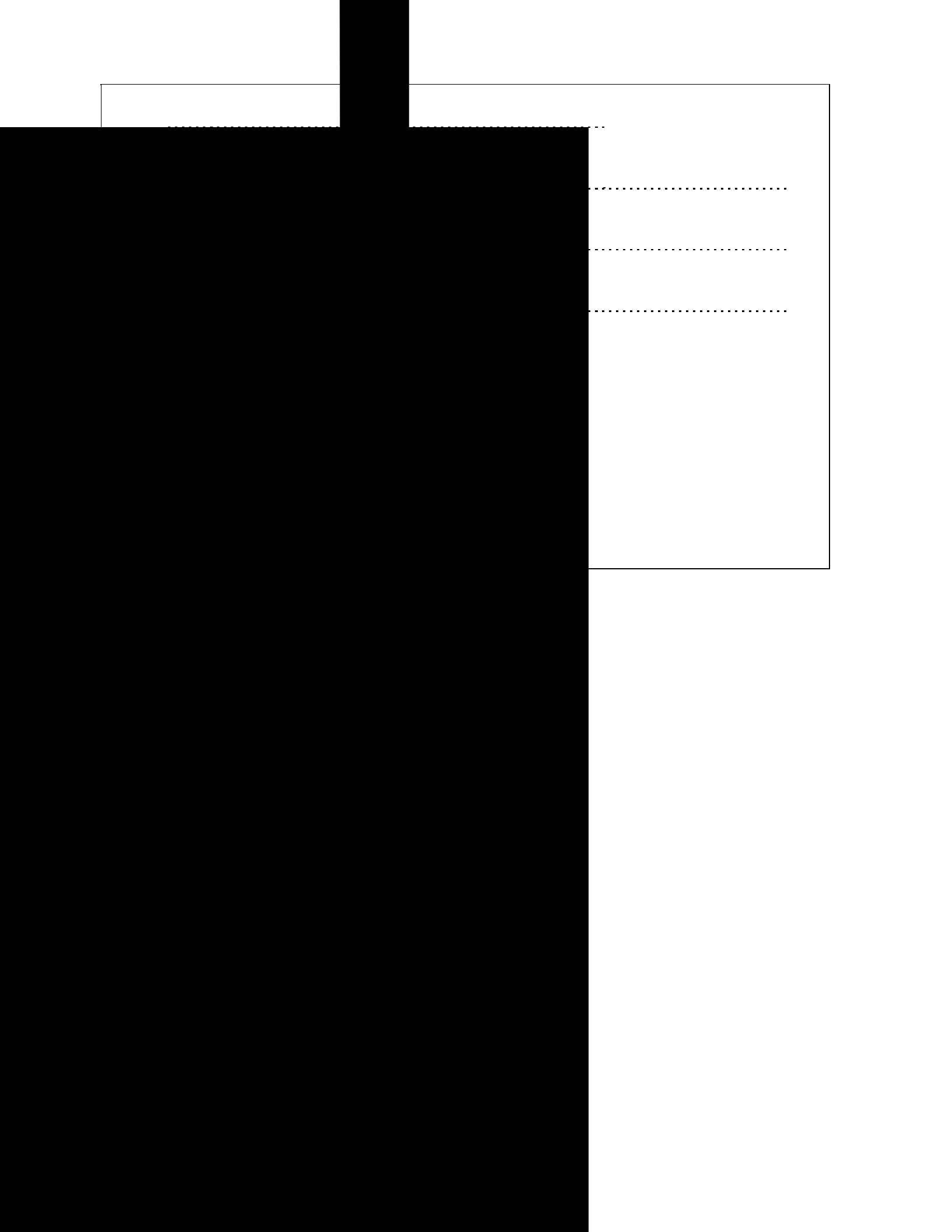
How many parents responded to the survey in 2003-2004 and 2004-2005, and how does this compare to the number of students in the population each year?

	Campus	District EL	District MS	District HS
# of Parents Responding in 2003-2004	282	16,070	2,721	1,640
# of Students in 2003-2004	501	42,594	15,819	19,847
<i>Ratio of Parent Respondents to Students, 2003-04</i>	56.3%	37.7 %	17.2 %	8.3 %
# of Parents Responding in 2004-2005	211	12,137	2,007	2,700
# of Students in 2004-2005	429	43,566	15,705	19,976
<i>Ratio of Parent Respondents to Students in 2004-05</i>	49.2%	27.9 %	12.8 %	13.5 %

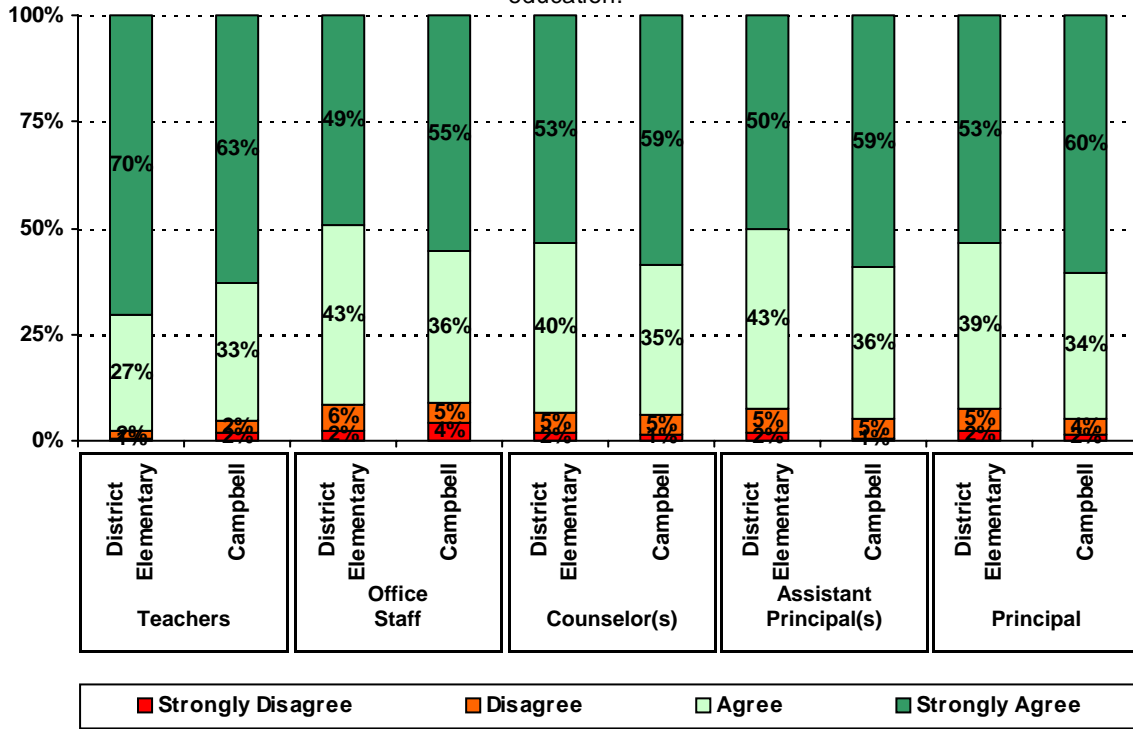
Note: The ratio of parent respondents to students is listed above as a percentage for ease of interpretation; however, it is the number of parents who responded per 100 students enrolled.

Grade	% of Students, as Reported by Parent Respondents	% of Students in Campus Population
EC	N/A	0.0%
PK	13.2%	14.0%
K	19.6%	16.3%
1st	10.3%	12.6%
2nd	11.3%	14.0%
3rd	15.2%	13.3%
4th	19.1%	17.9%
5th	11.3%	11.9%
6th	N/A	N/A

Note: Student population data are based on Fall 2003 and Fall 2004 PEIMS data submitted by the district to TEA, and may differ from the district's reported data.



5. The following school staff have helped me to become more involved in my child's education.

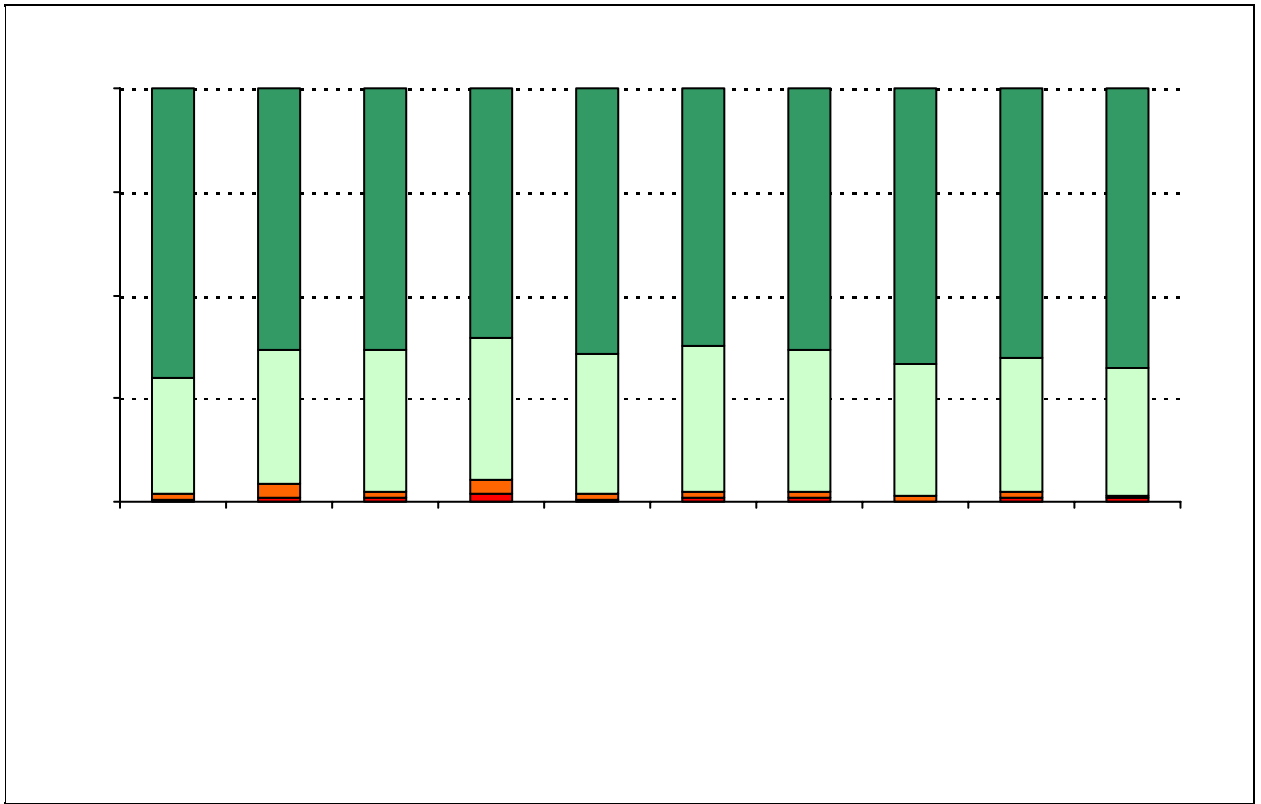


.....

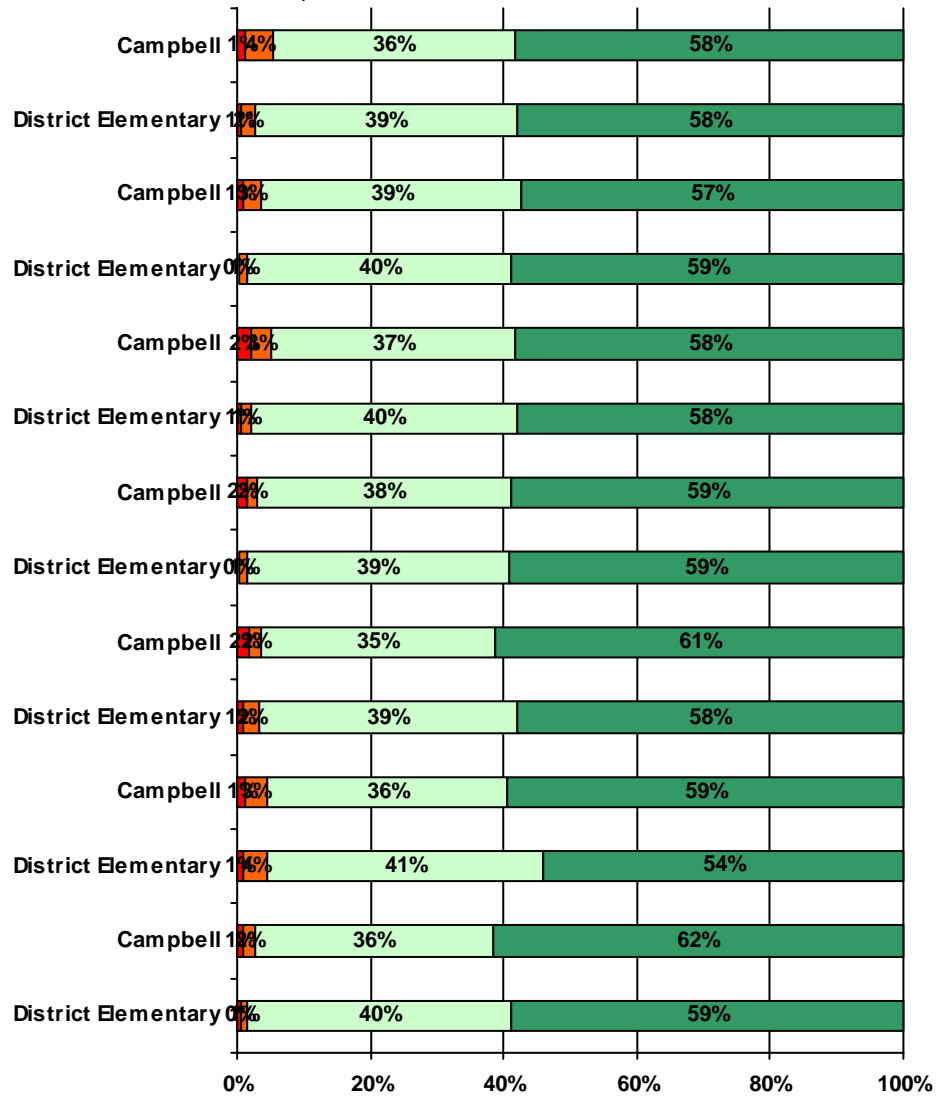
.....

.....

.....

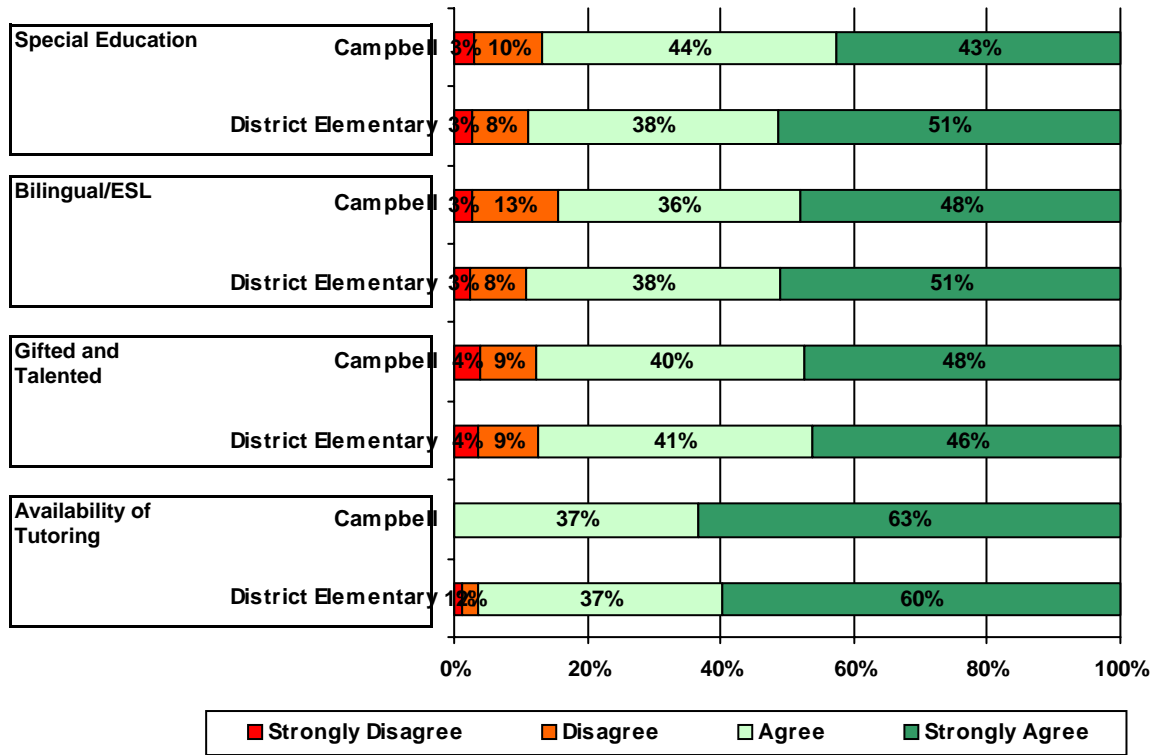


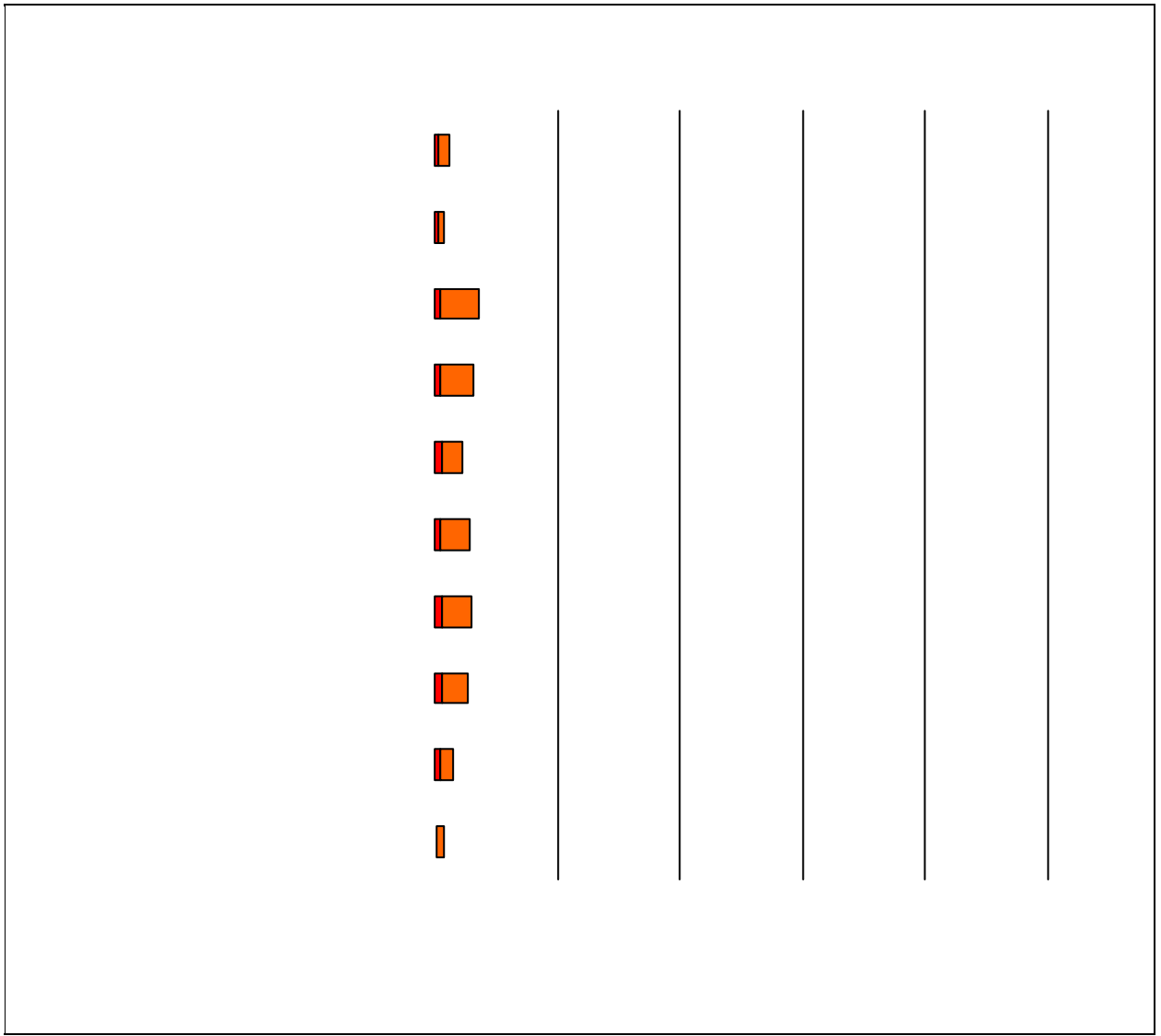
11. School staff provided me with information about the following school and district policies:



■ Strongly Disagree
 ■ Disagree
 ■ Neutral
 ■ Agree/Strongly Agree

12. School staff provided me with information about the following programs:





Item Response Details

Number of Campbell Elementary School Parent Responses, by Response Option

		Strongly Agree	Agree	Disagree	Strongly Disagree	Does Not Apply	Don't Know
		121					
4b.	n = 205	116					
3c.	n = 202	95	51	1	0	13	31
3d.	n = 208	124	61	6	7	3	7
3e.	n = 208	138	61	1	3	1	4
4a.	n = 207	121	61	1	6	8	10
4b.	n = 205	116	61	3	2	10	13
4c.	n = 203	95	55	3	2	16	32
4d.	n = 204	108	66	6	3	9	12
4e.	n = 206	128	65	6	2	2	3
5a.	n = 206	116	66	7	3	9	5
5b.	n = 203	105	63	8	1	13	13
5c.	n = 203	88	53	7	2	26	27
5d.	n = 205	94	61	8	7	22	13
5e.	n = 206	126	66	5	4	4	1
6a.	n = 208	100	75	5	3	13	12
6b.	n = 205	94	72	8	0	17	14
6c.	n = 201	78	62	6	1	27	27
6d.	n = 203	81	65	7	4	25	21
6e.	n = 205	105	83	2	2	7	6
7a.	n = 206	136	62	1	2	3	2
7b.	n = 204	130	62	3	0	3	6
7c.	n = 200	107	60	2	2	7	11



