

2004-2005 AISD Parent Survey Results

The following report contains the results of the 2004-2005 AISD Parent Survey for your campus and all AISD schools acampo5selected each response option. Campus survey results should be examined for areas and opportunities for improvement. Results for all AISD schools at your level are presented to provide. 0 TDi50n806(e)4t.ncemults saris s

Asian	31.5%
Native American	0.4%
White	31.0%

How many parents responded to the survey in 2003-2004 and 2004-2005, and how does this compare to the number of students in the population each year?

	Campus	District EL	District MS	District HS
# of Parents Responding in 2003-2004	287	16,070	2,721	1,640
# of Students in 2003-2004	955	42,594	15,819	19,847
<i>Ratio of Parent Respondents to Students, 2003-04</i>	30.1%	37.7 %	17.2 %	8.3 %
# of Parents Responding in 2004-2005	383	12,137	2,007	2,700
# of Students in 2004-2005	940	43,566	15,705	19,976
<i>Ratio of Parent Respondents to Students in 2004-05</i>	40.7%	27.9 %	12.8 %	13.5 %

Note: The ratio of parent respondents to students is listed above as a percentage for ease of interpretation; however, it is the number of parents who responded per 100 students enrolled.

What did parents report as their child's grade, and how does this compare to the grade level distribution of the student population?

Grade	% of Students, as Reported by Parent Respondents	% of Students in Campus Population
EC	0%	0.1%
PK	2.8%	9.0%
K	7.3%	14.9%
1st	12.4%	14.4%
2nd	13.5%	16.8%
3rd	20.0%	16.8%
4th	22.3%	13.8%
5th	21.4%	14.1%
6th	0.3%	N/A

Note: Student population data are based on Fall 2003 and Fall 2004 PEIMS data submitted by the district to TEA, and may differ from the official AEIS report.

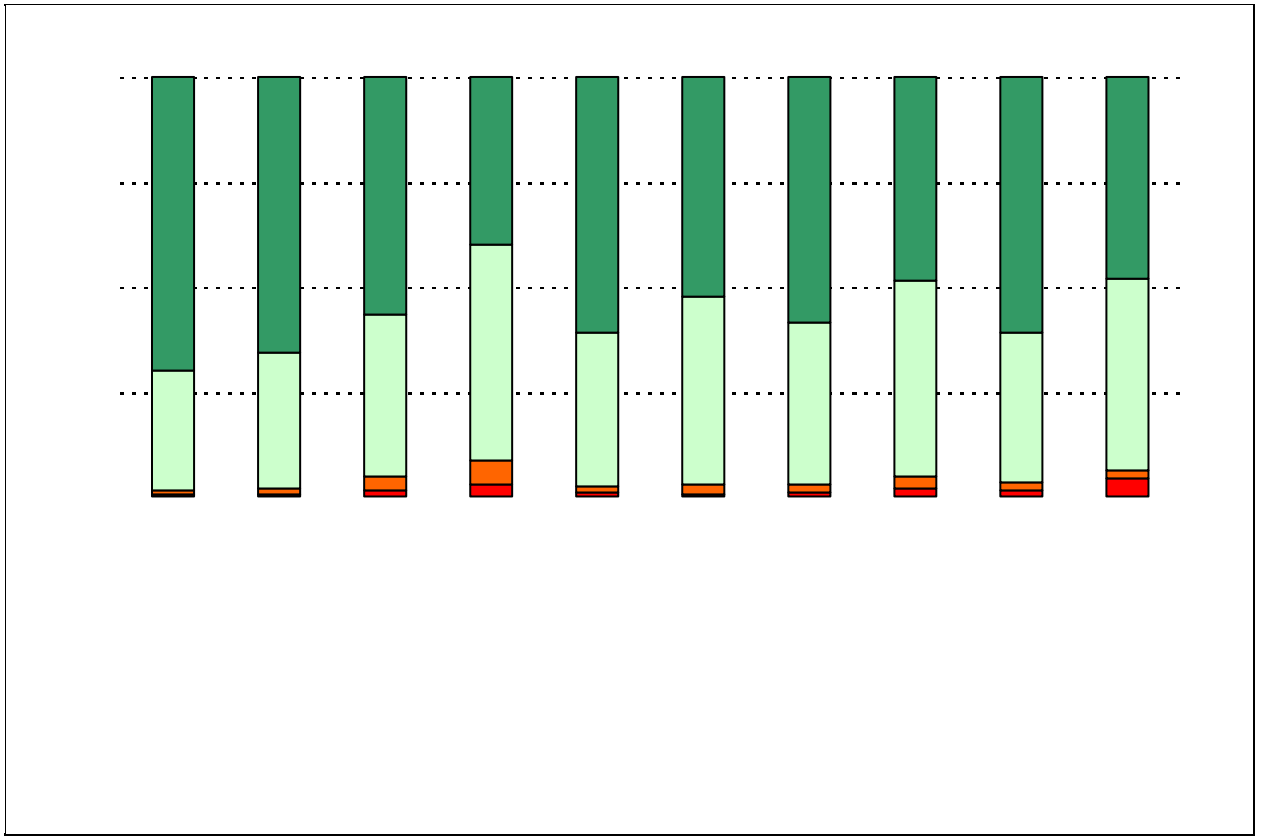
2004-2005 AISD Parent Survey Item Responses

Each survey item is presented below, followed by a bar graph containing results for your campus and for all campuses at your level.

Please examine the results below to determine areas of strength and opportunities for improvement. Large percentages of "Strongly Agree" and "Agree" indicate areas in which your campus staff excel, and large percentages of "Disagree" and "Strongly Disagree" indicate areas for possible improvement.

In addition, please compare the percentage of parents from your campus selecting each response option with the percentage of all AISD parents selecting each response option. If your campus percentages are very different from the percentages reported districtwide, please consider potential reasons for discrepancies.

Please also review the results below for staff categories with consistently positive or negative responses. These responses may be used to identify opportunities for praise and areas for professional development.



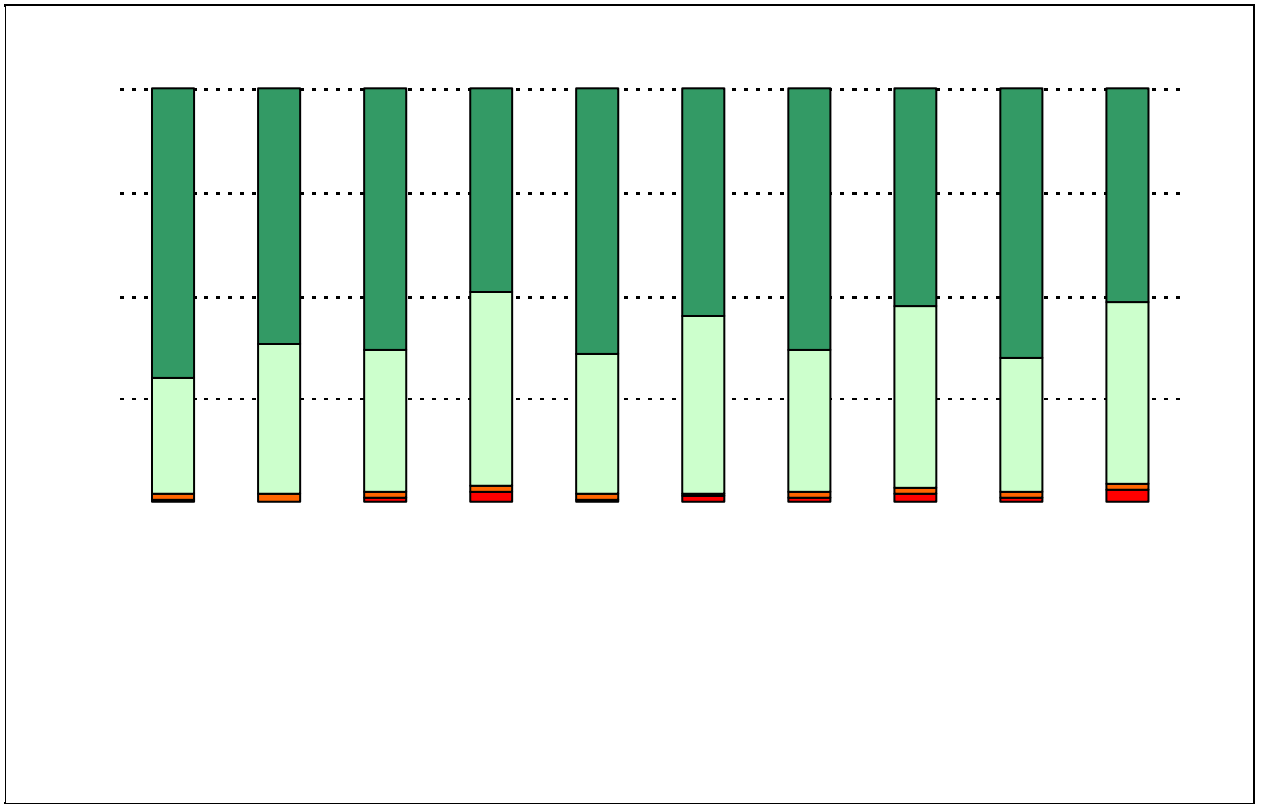
.....

.....

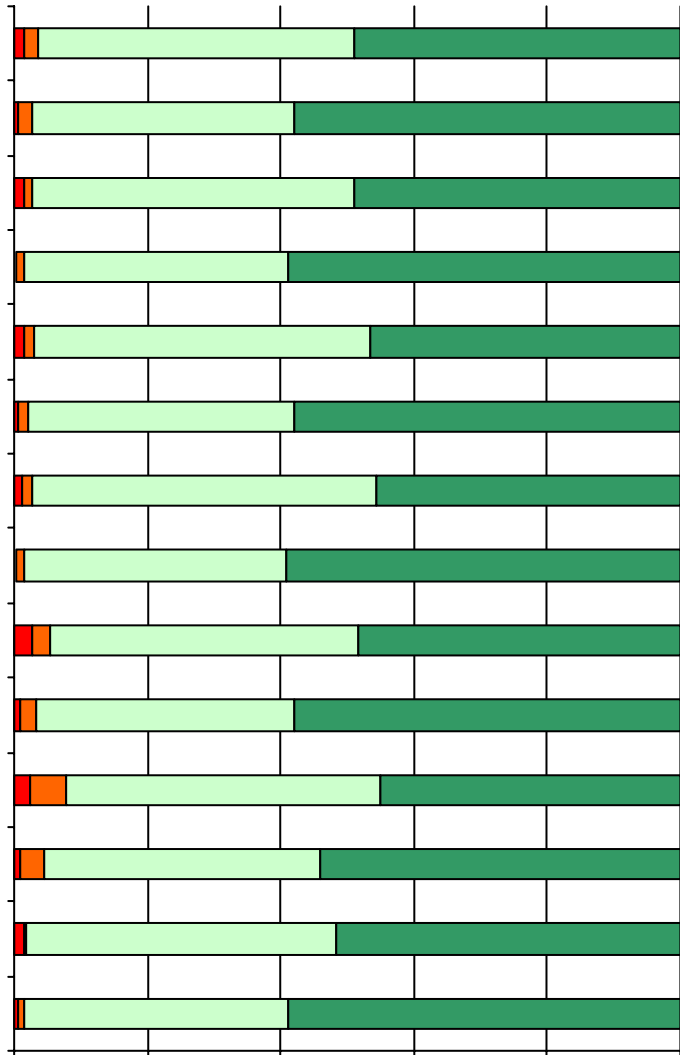
.....

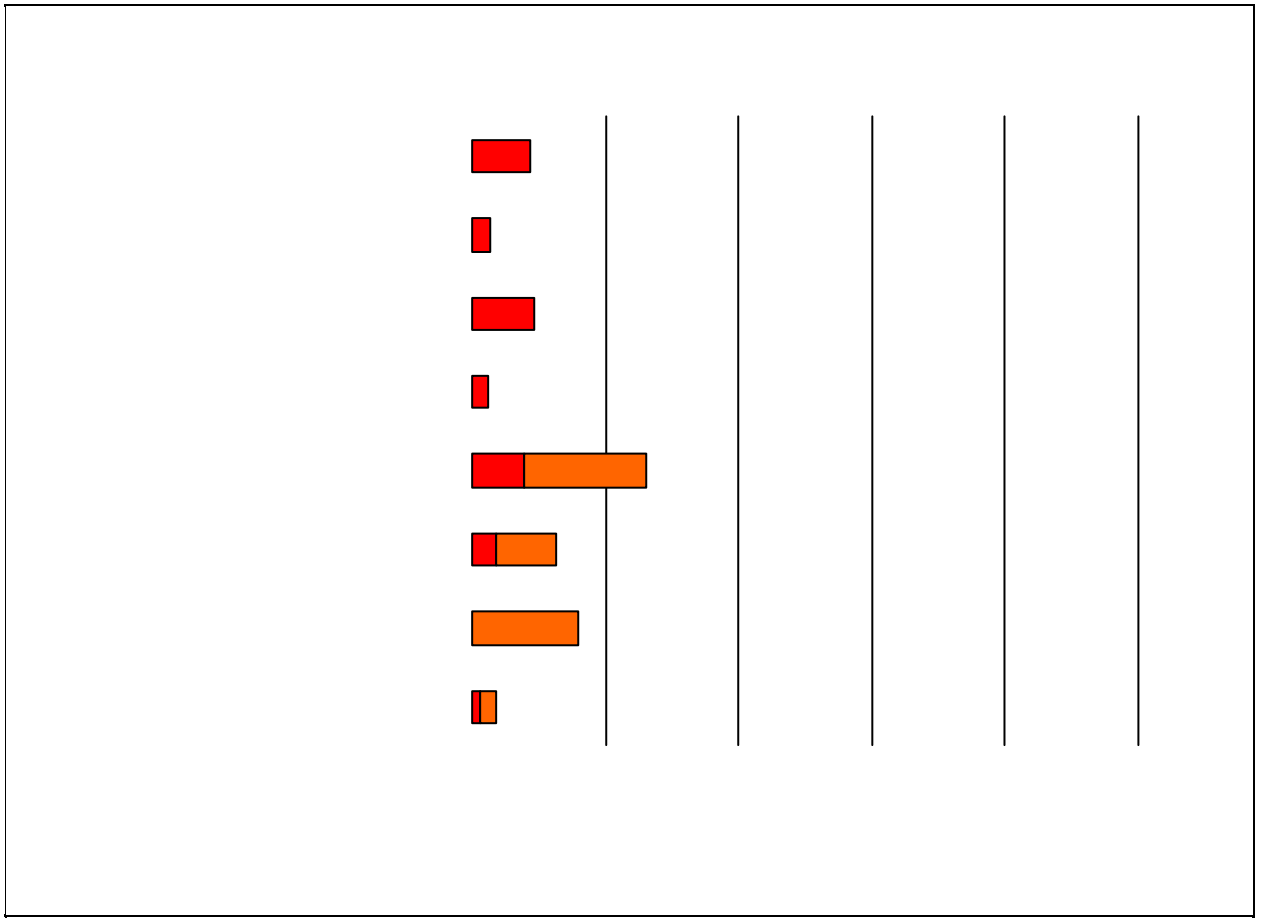
.....

— — —

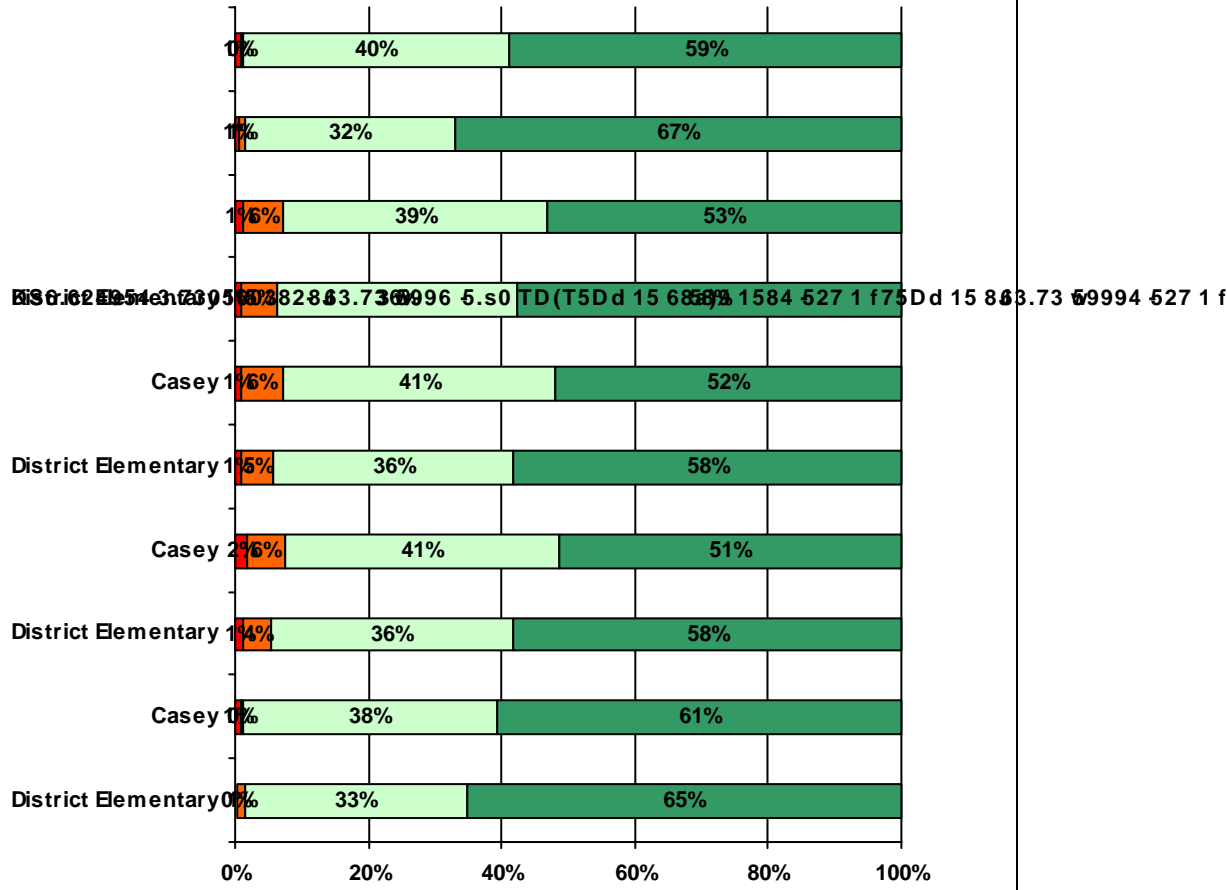


11. School staff provided me with information about the following school and district





13. School staff provided me with the following information about my child:



		Strongly Agree	Agree	Disagree	Strongly Disagree	Does Not Apply	Don't Know
11a.	n = 363	163	159	7	5	8	21
11b.	n = 365	172	170	4	5	3	11
11c.	n = 366	162	176	6	5	3	14
11d.	n = 364	161	182	5	4	3	9
11e.	n = 357	150	143	9	8	22	25
11f.	n = 362	151	159	18	8	5	21
11g.	n = 368	185	168	1	5	2	7
12a.	n = 355	76	73	39	18	95	54
12b.	n = 358	64	72	42	18	110	52
12c.	n = 360	78	112	47	20	47	56
12d.	n = 355	11	5	3	0	4	5
13a.	n = 368	211	144	1	3	1	8
13b.	n = 364	182	135	21	4	8	14
13c.	n = 364	167	131	20	3	23	20
13d.	n = 361	144	115	16	5	60	21
13e.	n = 364	214	134	1	3	7	5

*This item included an additional response option, 'I am not aware of AISD's academic benchmark testing.' An additional 21 parents selected this option.