

	Campus	District EL	District MS	District HS
# of Parents Responding in 2003-2004	177	16,070	2,721	1,640
# of Students in 2003-2004	679	42,594	15,819	19,847
<i>Ratio of Parent Respondents to Students, 2003-04</i>	26.1%	37.7 %	17.2 %	8.3 %
# of Parents Responding in 2004-2005	112	12,137	2,007	2,700
# of Students in 2004-2005	683	43,566	15,705	19,976
<i>Ratio of Parent Respondents to Students in 2004-05</i>	16.4%	27.9 %	12.8 %	13.5 %

What did parents report as their child's grade, and how does this compare to the grade level distribution of the student population?

Grade	% of Students, as Reported by Parent Respondents	% of Students in Campus Population
EC	2%	0.9%
PK	1%	1.9%
K	25.5%	16.1%
1st	10.8%	18.9%
2nd	12.7%	15.5%
3rd	21.6%	15.2%
4th	5.9%	15.2%
5th	20.6%	16.3%
6th	N/A	N/A

Note: Student population data are based on Fall 2003 and Fall 2004 PEIMS data submitted by the district to TEA, and may differ from the official AEIS report.

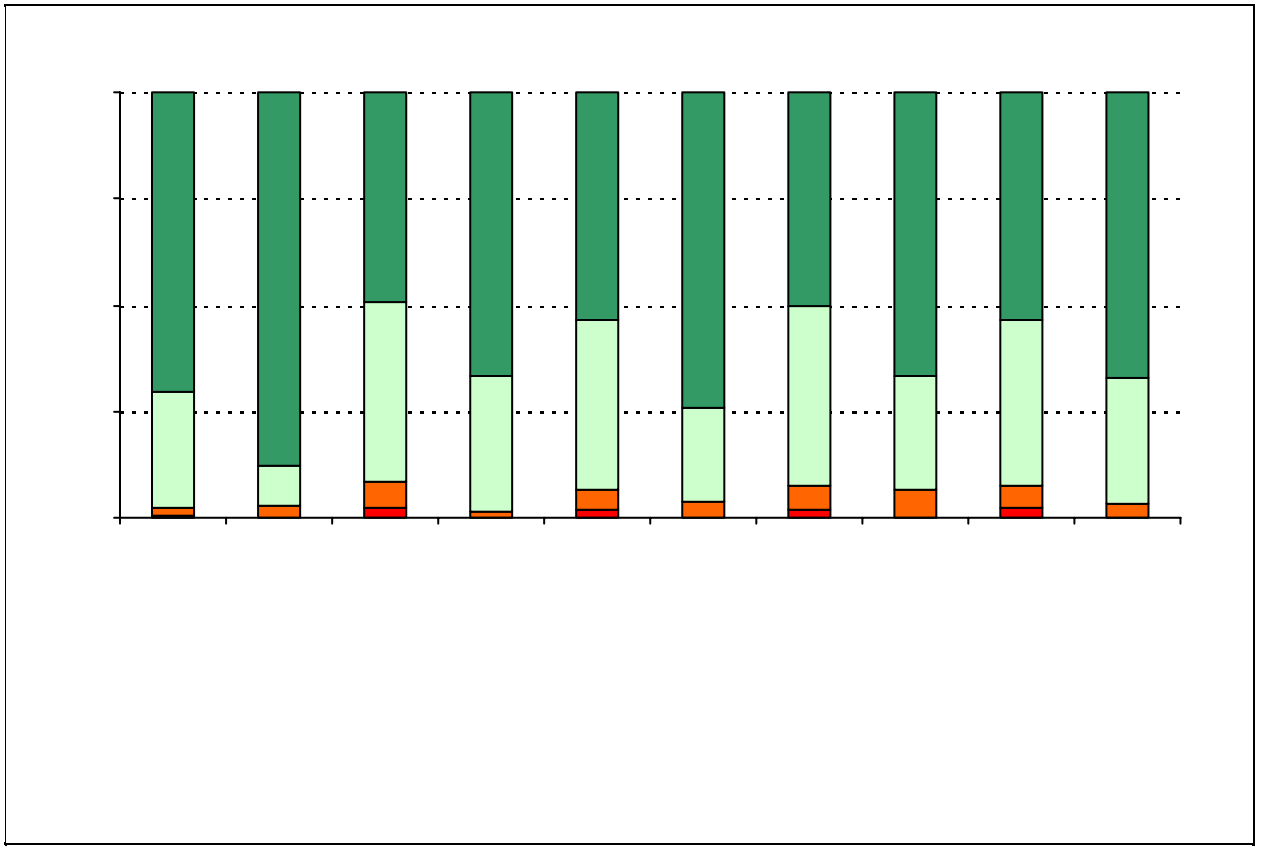
2004-2005 AISD Parent Survey Item Responses

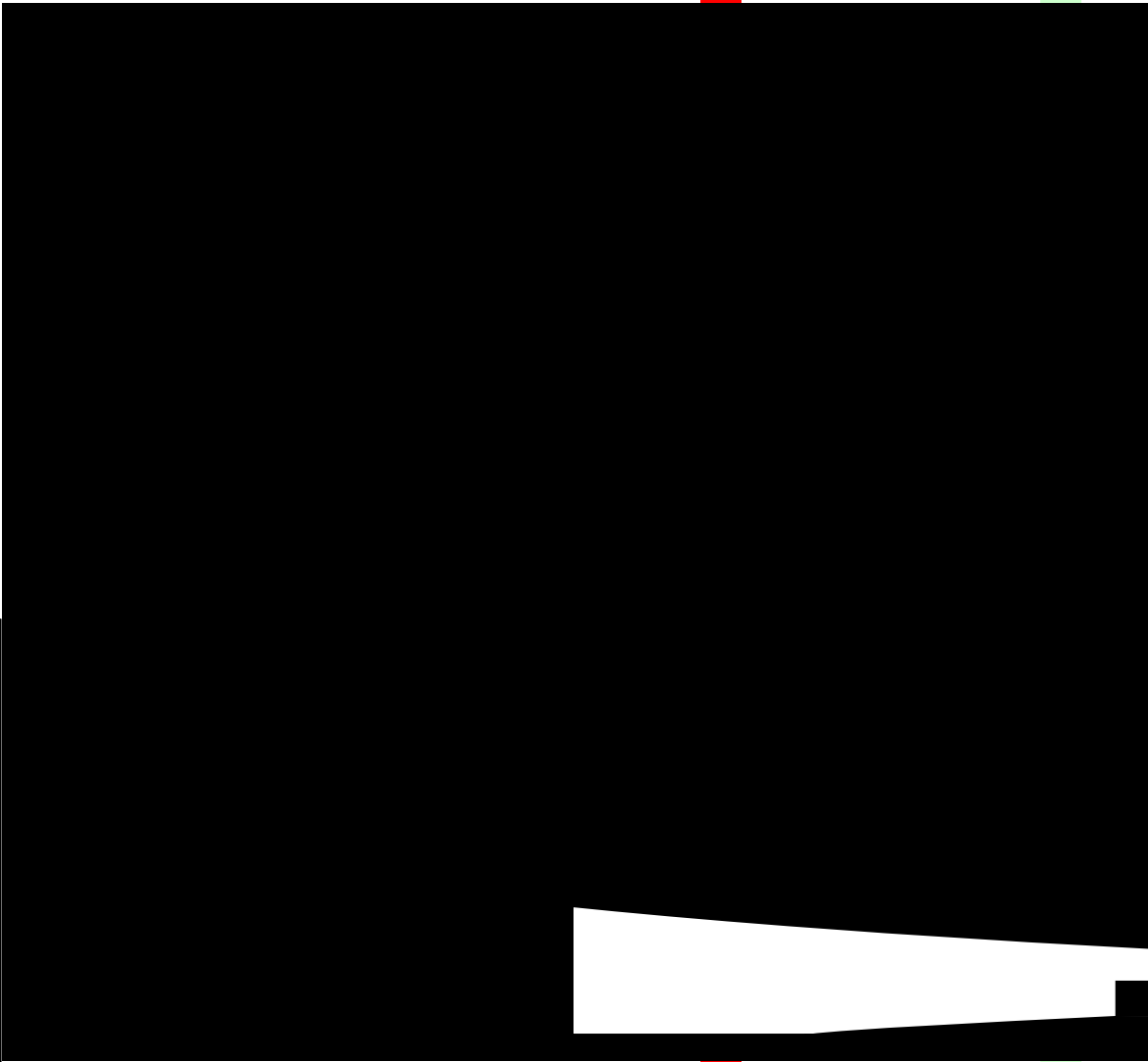
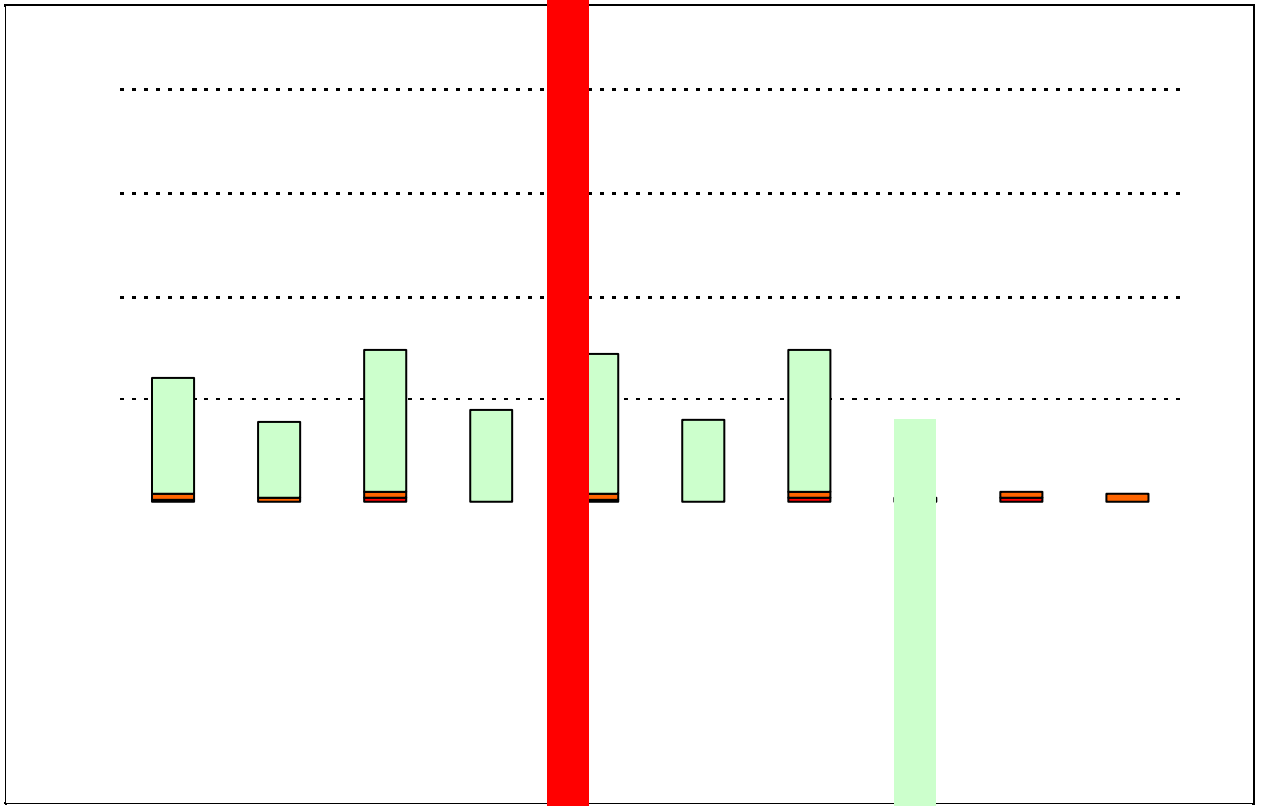
Each survey item is presented below, followed by a bar graph containing results for your campus and for all campuses at your level.

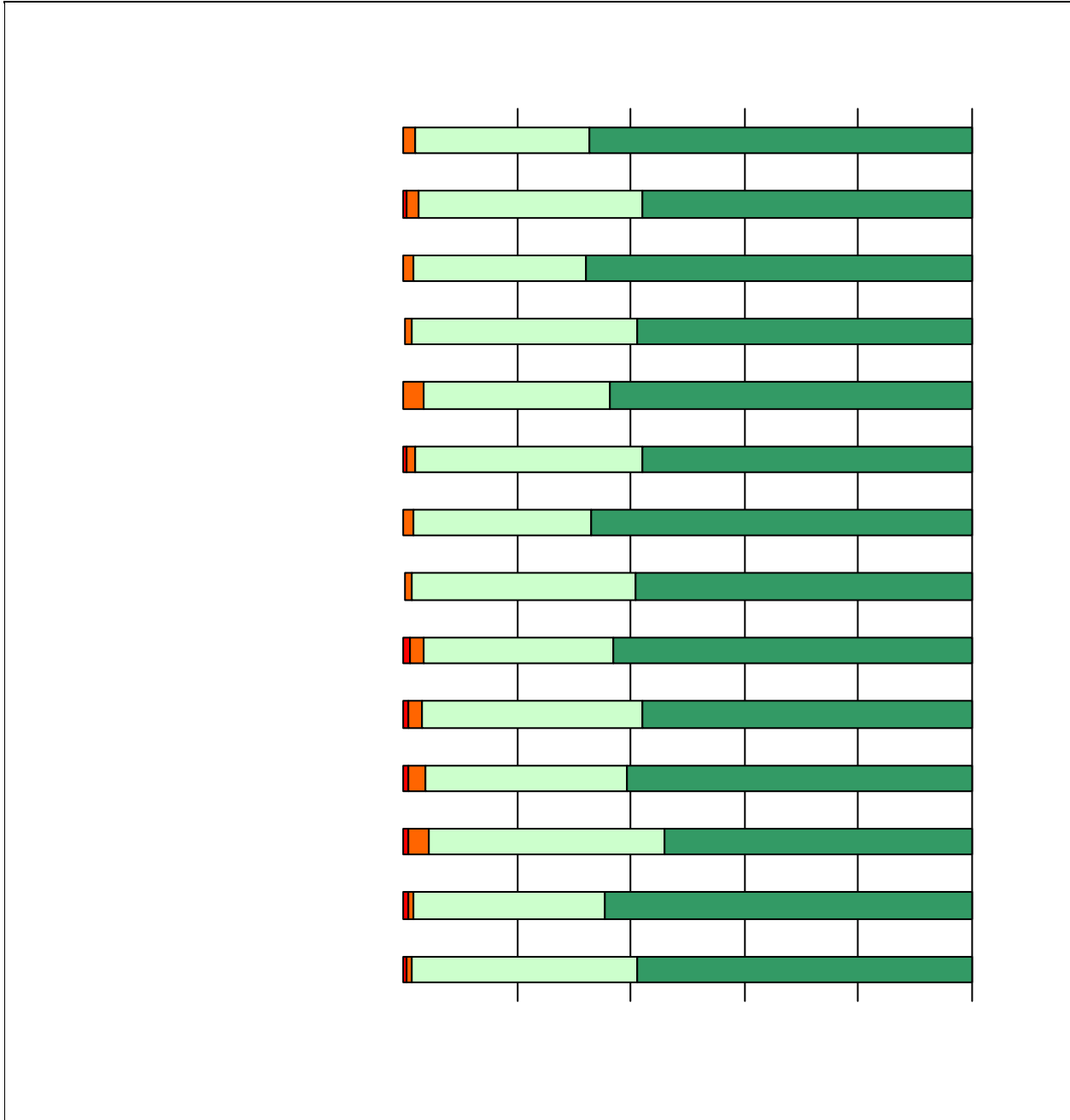
Please examine the results below to determine areas of strength and opportunities for improvement. Large percentages of "Strongly Agree" and "Agree" indicate areas in which your campus staff excel, and large percentages of "Disagree" and "Strongly Disagree" indicate areas for possible improvement.

In addition, please compare the percentage of parents from your campus selecting each response option with the percentage of all AISD parents selecting each response option. If your campus percentages are very different from the percentages reported districtwide, please consider potential reasons for discrepancies.

Please also review the results below for staff categories with consistently positive or negative responses. These responses may be used to identify opportunities for praise and areas for professional development.



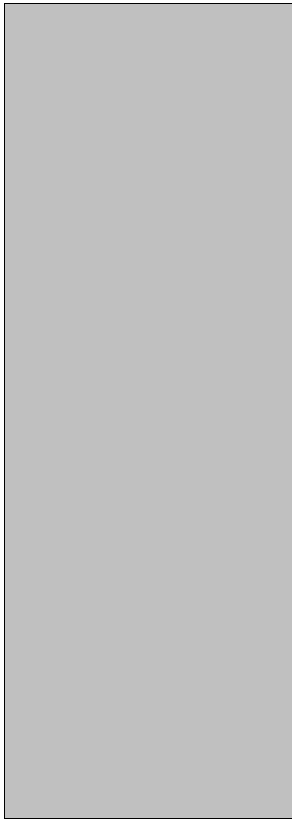




Item Response Details

Number of Casis Elementary School Parent Responses, by Response Option

		Strongly Agree	Agree	Disagree	Strongly Disagree	Does Not Apply	Don't Know
3a.	n = 112	87	22	0	0	0	3
3b.	n = 112	71	27	2	0	0	12
3c.	n = 112	87	20	0	0	0	5
3d.	n = 112	90	20	1	0	0	1
3e.	n = 112	96	15	0	0	0	1
4a.	n = 111	75	28	0	0	3	5
4b.	n = 112	65	21	3	0	4	19
4c.	n = 111	75	22	0	0	6	8
4d.	n = 112	73	26	1	0	6	6
4e.	n = 110	90	18	0	0	0	2
5a.	n = 111	61	27	3	0	12	8
5b.	n = 111	52	21	5	0	16	17
5c.	n = 111	61	18	3	0	16	13
5d.	n = 111	46	22	1	0	29	13
5e.	n = 112	94	10	3	0	3	2
6a.	n = 112	61	26	1	0	10	14
6b.	n = 112	54	23	1	0	13	21
6c.	n = 112	64	22	0	0	15	11
6d.	n = 112	42	15	0	0	36	19
6e.	n = 110	84	19	2	0	2	3
7a.	n = 112	83	22	2	0	1	4
7b.	n = 112	82	19	1	0	2	8
7c.	n = 112	86	21	0	0	2	3
7d.	n = 112	85	24	0	0	0	3
7e.	n = 111	88	20	1	0	0	2
*8.	n = 108	15	32	11	13	10	22
9.	n = 112	79	29	4	0	0	0
10.	n = 109	3	10	24	10	0	62



68

31

2

0

8

3

*This item included an additional response option, 'I am not aware of AISD's academic benchmark testing.' An additional 5 parents selected this option.