

Table 1. Number of respondents for:

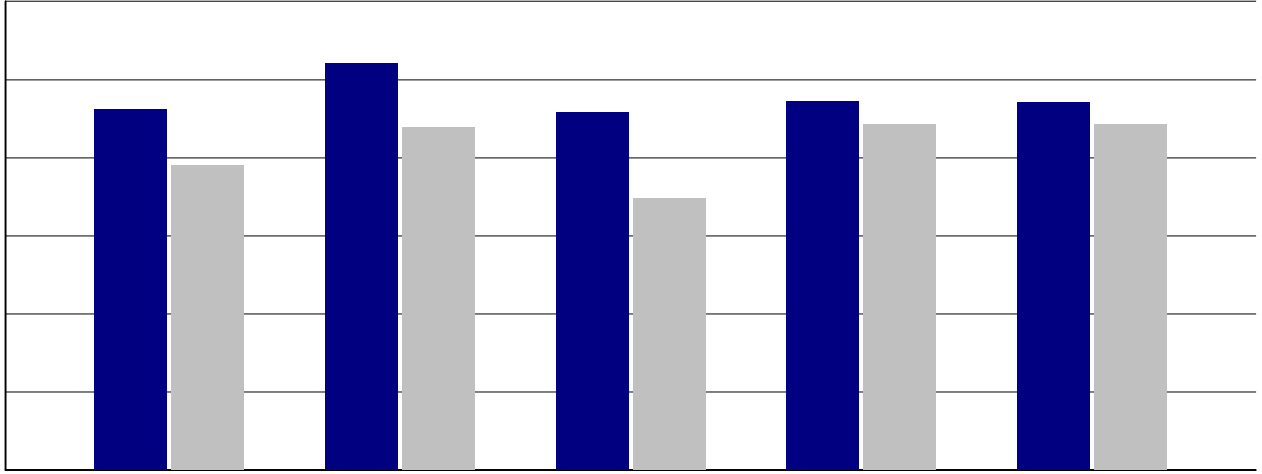
---

---

---

---

---



Behavioral environment	Clifton			All High Schools
	2010-2011	2011-2012	2012-2013	2012-2013

Adult fairness and respect	Clifton			All High Schools
	2010-2011	2011-2012	2012-2013	2012-2013



37. I will go to college after high school.	Clifton			All High Schools
	2010-2011	2011-2012	2012-2013	2012-2013

Appendix

Reworded items on the 2012-2013 Student Climate Survey and how they differ from their 2011-2012 version.	
2011-2012 Items	2012-2013 Reworded Items