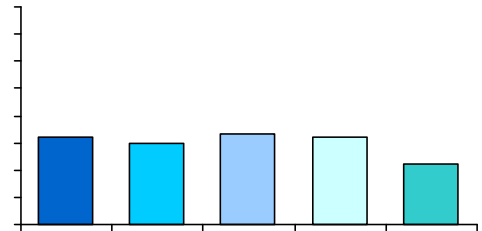


## TELL AISD Teaching and Learning Conditions Survey: Results for 2011 through 2015 **Cook Elementary School**

---

To do their jobs well, educators need supportive school environments where they are valued, are trusted, and can collaborate to improve instruction. The Teaching, Empowering, Leading and Learning (TELL) AISD Survey is a unique opportunity to gather information about school conditions from those whose views matter most—practicing educators. Respondents are asked for their perceptions on a variety of issues related to student achievement and staff retention, including General Climate, Leadership, Managing Student Conduct, Achievement Press, Instructional Practice and Support, Community Support and Engagement, Professional Development, and Facilities and Resources. In 2015, 8,760 AISD campus employees completed the survey.



	<u>2011</u>	<u>2012</u>	<u>2013</u>	<u>ALL EL 2015</u>
The faculty and leadership have a shared vision.	83%	79%	58%	
	74%	71%	48%	
	74%	62%	52%	
	94%	95%	91%	
	92%	93%	89%	
	72%	82%	70%	
	81%	64%	68%	
	82%	74%	68%	
	74%	81%	70%	
	78%	70%	64%	
	85%	76%	80%	
	*	*	38%	
	*	*	85%	
	*	*	72%	
	*	*	84%	
	*	*	77%	
	*	*	47%	

---

Cook

2013

The use of time in my school	0.18064009	(School level)	5.7017970878	137.92	682.74	Tm(2001k)	TjET0.141	0.41	0.652	rg
Facilities and resources										
Community support and involvement										
Managing student conduct										
Teacher leadership										
School leadership										
Professional development										
Instructional practices and support										
New teacher support										
Achievement press			*							

---



## Achievement Press

	Cook			ALL EL
	2011	2012	2013	2015
The school sets high standards for academic performance.	92%			
Teachers in this school believe that their students have the ability to achieve academically.	95%			
Parents exert pressure to maintain high standards.	31%			
Achievement is recognized and acknowledged by the school.	94%			
Parents press for school improvement.	31%			
Students in this school can achieve the goals that have been set for them.	92%			
Students respect others who get good grades.	86%			
Students seek extra work so they can get good grades.	43%			

2014

---

96%

88%

Provided supports (i.e., instructional coaching, professional learning communities, etc.)

92%

Teachers are encouraged to try new things to improve instruction.

91%

Teachers at my school are assigned classes that maximize their likelihood of success with students.

63%

Teachers have autonomy to make decisions about instructional delivery (i.e., pacing, materials and pedagogy).

---

62%

---

An appropriate amount of time is provided for professional development.	61%
Professional development offerings are data driven.	79%
Professional learning opportunities are aligned with the school's improvement plan.	70%
Professional development is differentiated to meet the needs of individual teachers.	50%
Professional development deepens teachers' content knowledge.	64%
Teachers are encouraged to reflect on their own practice.	88%
Follow up is provided from professional development in this school.	54%
Professional development provides ongoing opportunities for teachers to work with colleagues to refine teaching practices.	56%
Professional development is evaluated and results are communicated to teachers.	50%
Professional development enhances teachers' abilities to implement instructional strategies that meet diverse student learning needs.	71%
Professional development enhances teachers' abilities to improve student learning.	71%

---

## Facilities and Resources

	Cook					ALL EL
	2011	2012	2013	2014	2015	2015
Teachers have sufficient access to appropriate instructional materials.	90%	76%	65%	93%	96%	90%
Teachers have sufficient access to instructional technology, including computers, printers, software and Internet access.	60%	73%	68%	81%	96%	82%
Teachers have sufficient access to office equipment and supplies such as copy machines, paper, pens, etc.	60%	70%	82%	87%	84%	87%
Teachers have sufficient training and support to fully utilize the available instructional technology.	48%	46%	53%	76%	96%	79%
Teachers have sufficient access to a broad range of professional support personnel.	75%	70%	56%	90%	93%	87%
The physical environment of classrooms in this school supports teaching and learning.+	88%	86%	97%	91%	94%	94%
The school environment is clean and well maintained.+	99%	99%	99%	98%	95%	94%
Teachers have adequate space to work productively.	83%	75%	72%	79%	96%	90%
Teachers have time available to collaborate with colleagues.	55%	60%	42%	69%	89%	78%

Note. + Includes responses from teaching and nonteaching staff.