



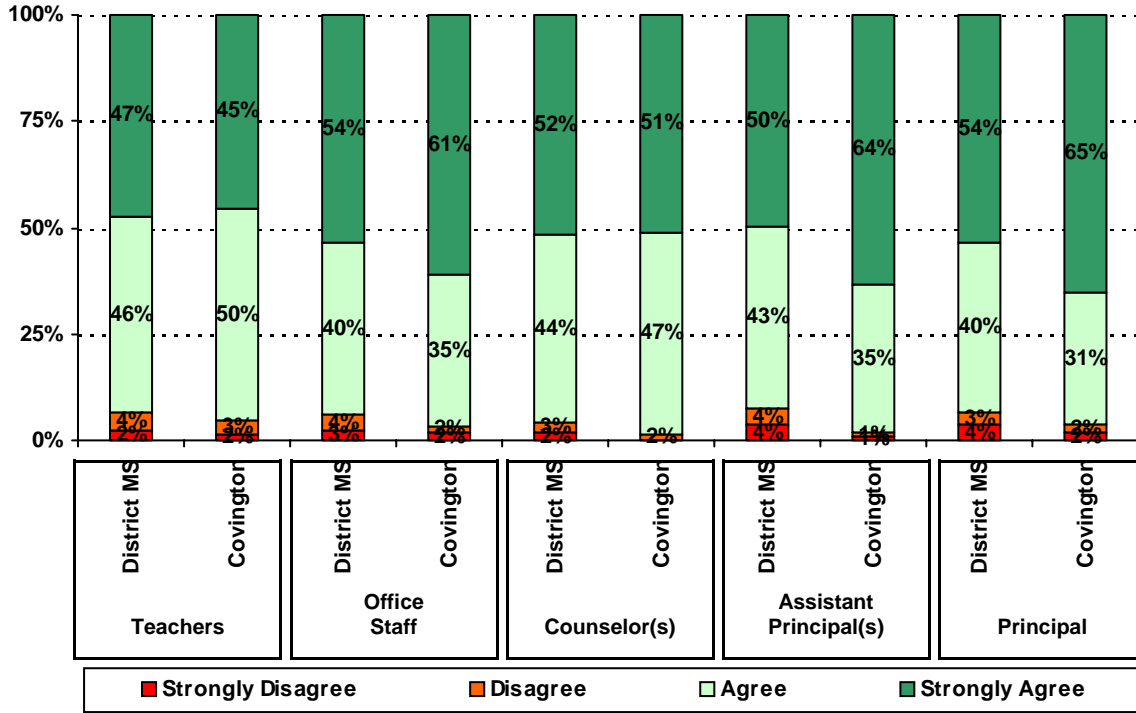
How many parents responded to the survey in 2003-2004 and 2004-2005, and how does this compare to the number of students in the population each year?

	Campus	District EL	District MS	District HS
# of Parents Responding in 2003-2004				
# of Students in 2003-2004				
<i>Ratio of Parent Respondents to Students, 2003-04</i>	12.6%	37.7 %	17.2 %	8.3 %
# of Parents Responding in 2004-2005				
# of Students in 2004-2005				
<i>Ratio of Parent Respondents to Students in 2004-05</i>	15.4%	27.9 %	12.8 %	13.5 %

What did parents report as their child's ethnicity, and how does this compare to the ethnic distribution of the student population?

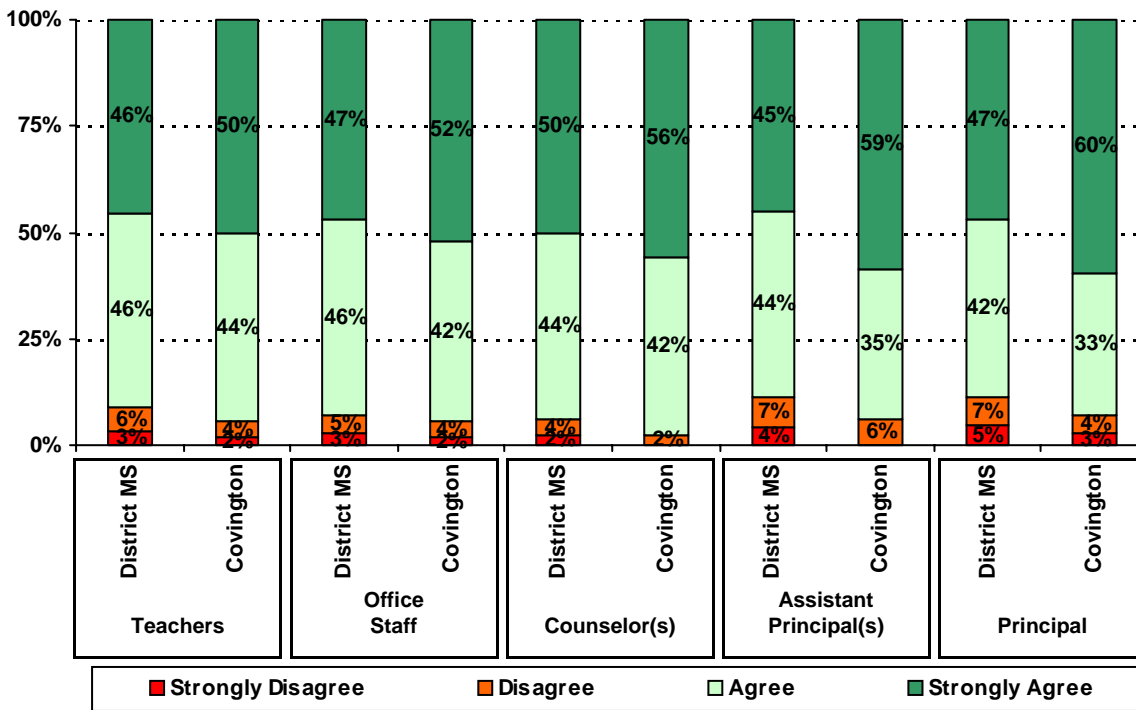
Ethnicity	% of Students, as Reported by Parent Respondents	% of Students in Campus Population
African American		
Asian		
Hispanic		
Native American		
White		

3. The following school staff treat me with courtesy and respect.



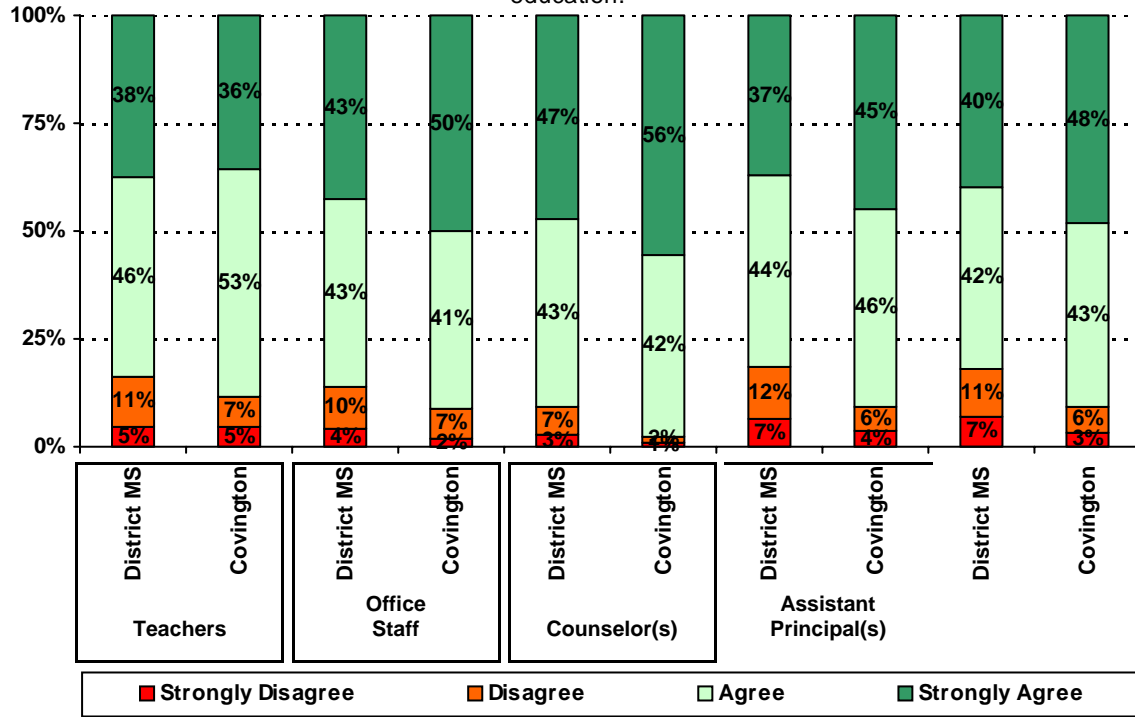
■ Strongly Disagree
 ■ Disagree
 ■ Agree
 ■ Strongly Agree

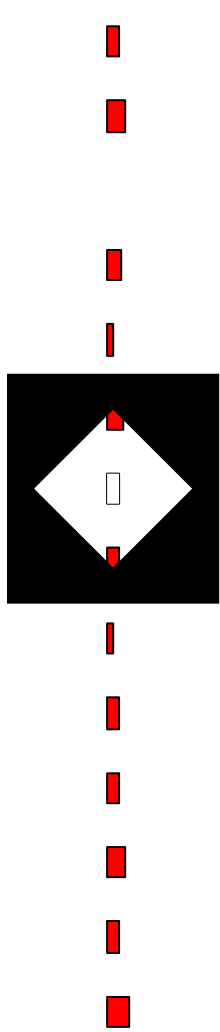
4. The following school staff provide me with opportunities for two-way communication.



■ Strongly Disagree
 ■ Disagree
 ■ Agree
 ■ Strongly Agree

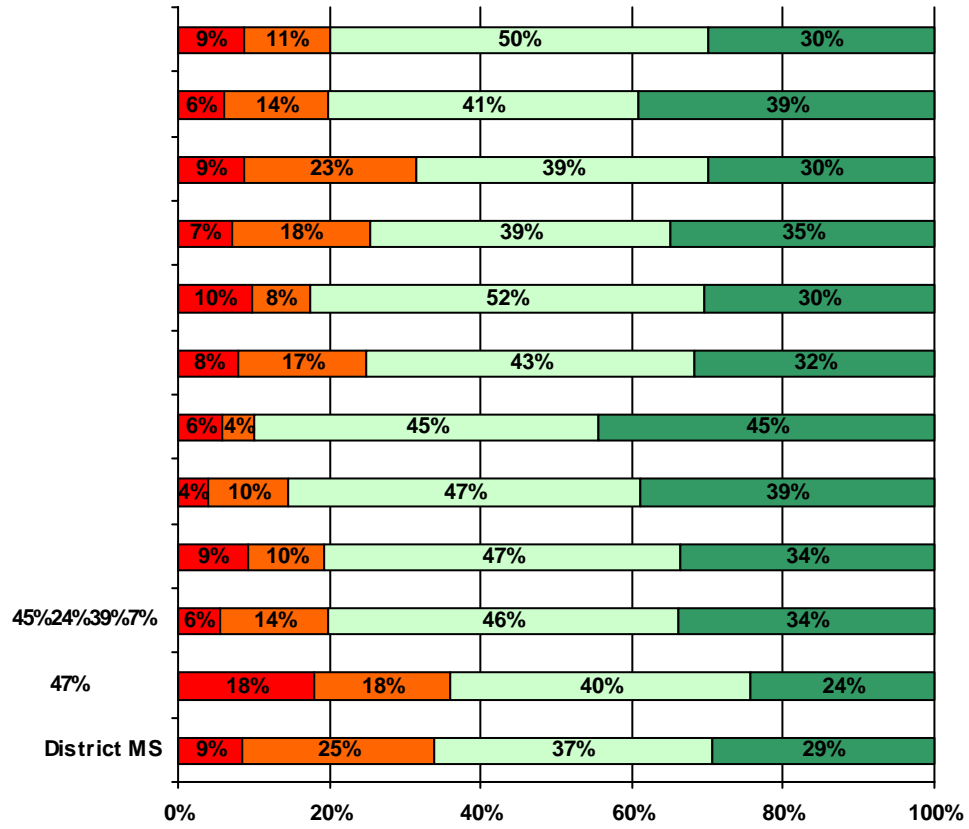
5. The following school staff have helped me to become more involved in my child's education.



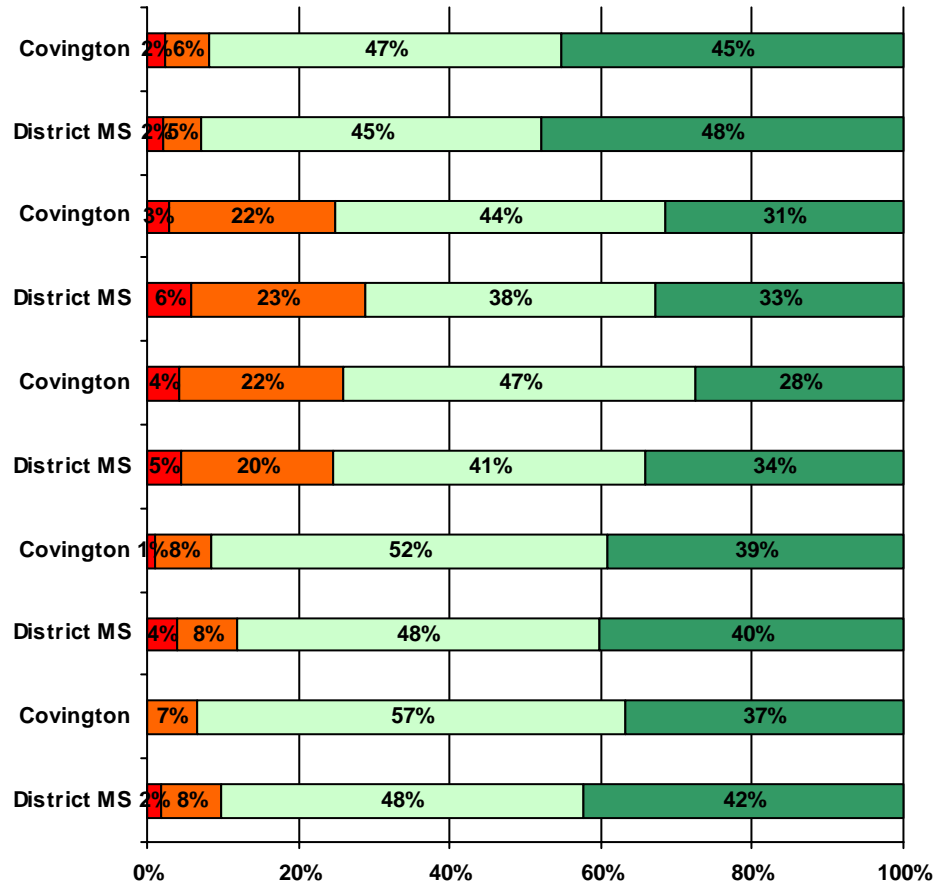


Five vertical lines for writing.

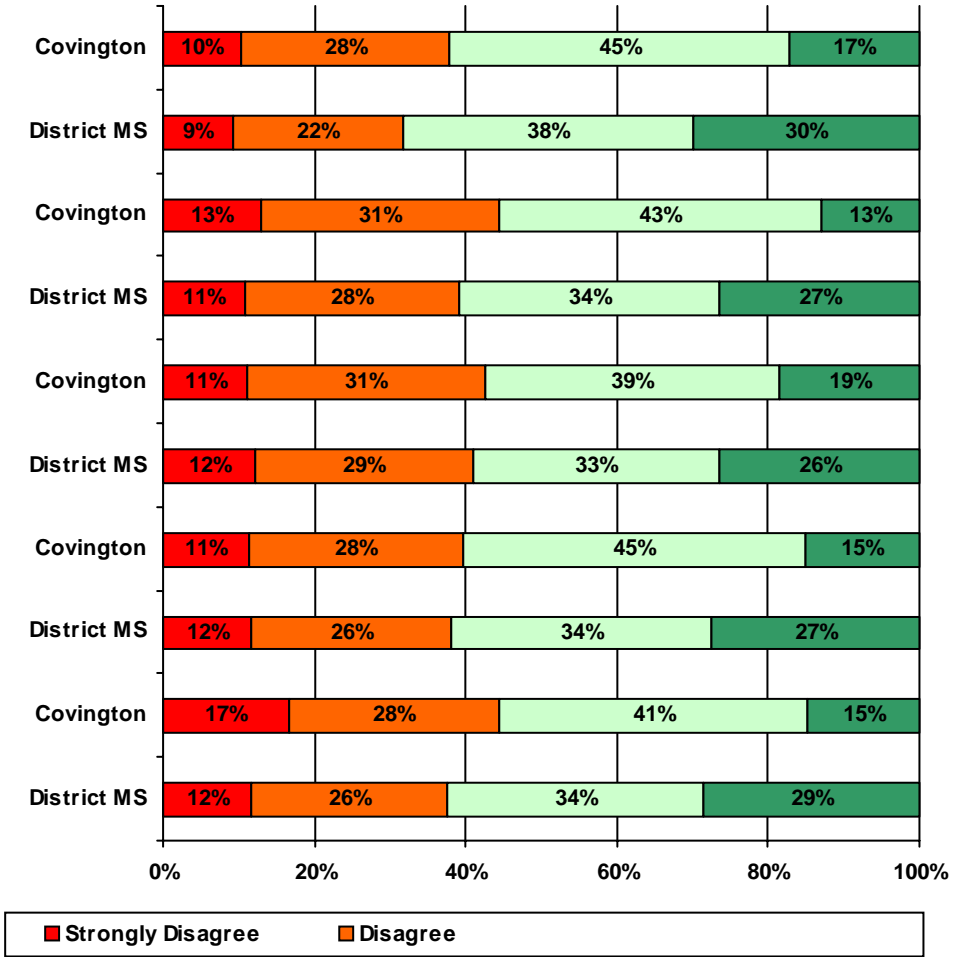
12. School staff provided me with information about the following programs :



13. School staff provided me with the following information about my child:



14. School staff provided me with the following graduation and post-graduation information:



Item Response Details

		Strongly Agree	Agree	Disagree	Strongly Disagree	Does Not Apply	Don't Know
3a.	n = 133						
3b.	n = 132						
3c.	n = 134						
3d.	n = 135						
3e.	n = 133						
4a.	n = 134						
4b.	n = 131						
4c.	n = 135						
4d.	n = 134						
4e.	n = 132						
5a.	n = 131						
5b.	n = 129						
5c.	n = 131						
5d.	n = 132						
5e.	n = 126						
6a.	n = 130						
6b.	n = 127						
6c.	n = 131						
6d.	n = 131						
6e.	n = 127						
7a.	n = 133						
7b.	n = 132						
7c.	n = 133						
7d.	n = 133						
7e.	n = 131						

		Strongly Agree	Agree	Disagree	Strongly Disagree	Does Not Apply	Don't Know
11a.	n = 133						
11b.	n = 132						
11c.	n = 133						
11d.	n = 132						
11e.	n = 0						
11f.	n = 0						
11g.	n = 132						
12a.	n = 133						
12b.	n = 130						
12c.	n = 130						
12d.	n = 133						
13a.	n = 135						
13b.	n = 130						
13c.	n = 130						
13d.	n = 131						
13e.	n = 130						

*This item included an additional response option, 'I am not aware of AISD's academic benchmark testing.' An additional 8 parents selected this option.