

2004-2005 AISD Parent Survey Results

The following report contains the results of the 2004-2005 AISD Parent Survey for your campus

How many parents responded to the survey in 2003-2004 and 2004-2005, and how does this compare to the number of students in the population each year?

	Campus	District EL	District MS	District HS
# of Parents Responding in 2003-2004	218	16,070	2,721	1,640
# of Students in 2003-2004	503	42,594	15,819	19,847
<i>Ratio of Parent Respondents to Students, 2003-04</i>	<i>43.3%</i>	<i>37.7 %</i>	<i>17.2 %</i>	<i>8.3 %</i>
# of Parents Responding in 2004-2005	172	12,137	2,007	2,700
# of Students in 2004-2005	509	43,566	15,705	19,976
<i>Ratio of Parent Respondents to Students in 2004-05</i>	<i>33.8%</i>	<i>27.9 %</i>	<i>12.8 %</i>	<i>13.5 %</i>

Note: The ratio of parent respondents to students is listed above as a percentage for ease of interpretation; however, it is the number of parents who responded per 100 students enrolled.

What did parents report as their child's grade, and how does this compare to the grade level distribution of the student population?

Grade	% of Students, as Reported by Parent Respondents	% of Students in Campus Population
EC	N/A	0.0%
PK	0%	3.5%
K	18.0%	16.7%
1st	19.2%	18.3%
2nd	16.8%	15.9%
3rd	15.6%	12.4%
4th	14.4%	17.9%
5th	16.2%	15.3%
6th	N/A	N/A

Note: Student population data are based on Fall 2003 and Fall 2004 PEIMS data submitted by the district to TEA, and may differ from the official AEIS report.

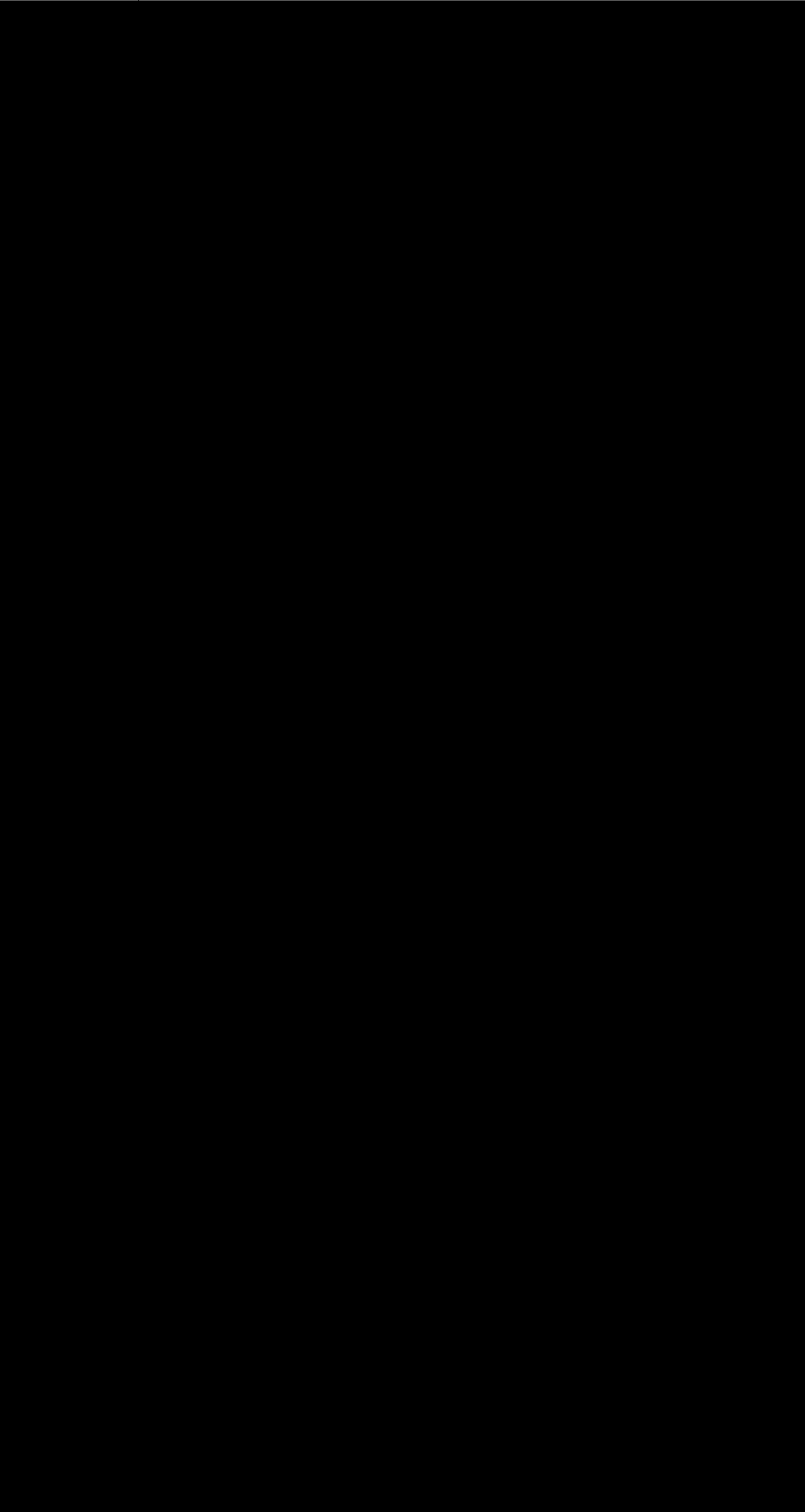
Each survey item is presented below, followed by a bar graph containing results for your campus and for all campuses at your level.

Please examine the results below to determine areas of strength and opportunities for improvement. Large percentages of "Strongly Agree" and "Agree" indicate areas in which your campus staff excel, and large percentages of "Disagree" and "Strongly Disagree" indicate areas for possible improvement.

In addition, please compare the percentage of parents from your campus selecting each response option with the percentage of all AISD parents selecting each response option. If your campus percentages are very different from the percentages reported districtwide, please consider potential reasons for discrepancies.

Please also review the results below for staff categories with consistently positive or negative

[Redacted]



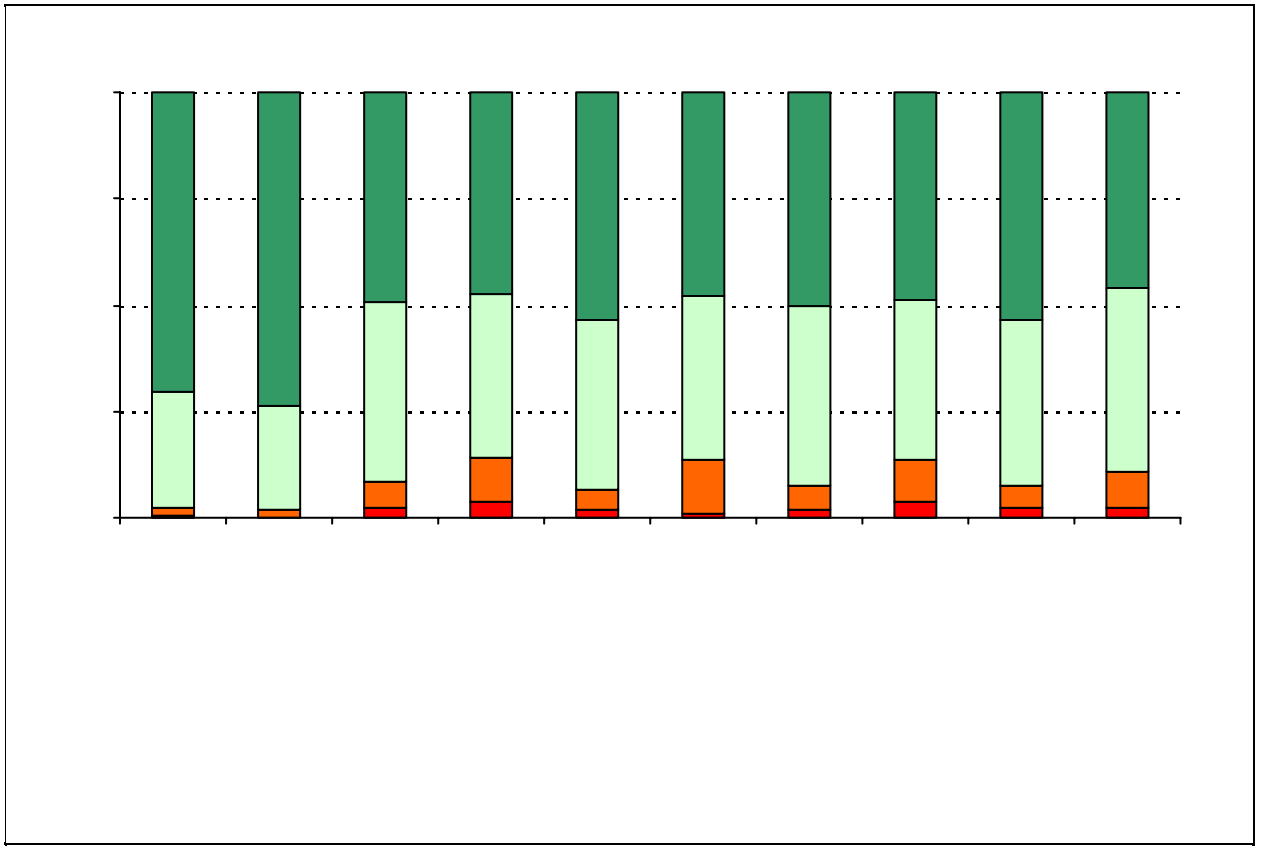
[Redacted]

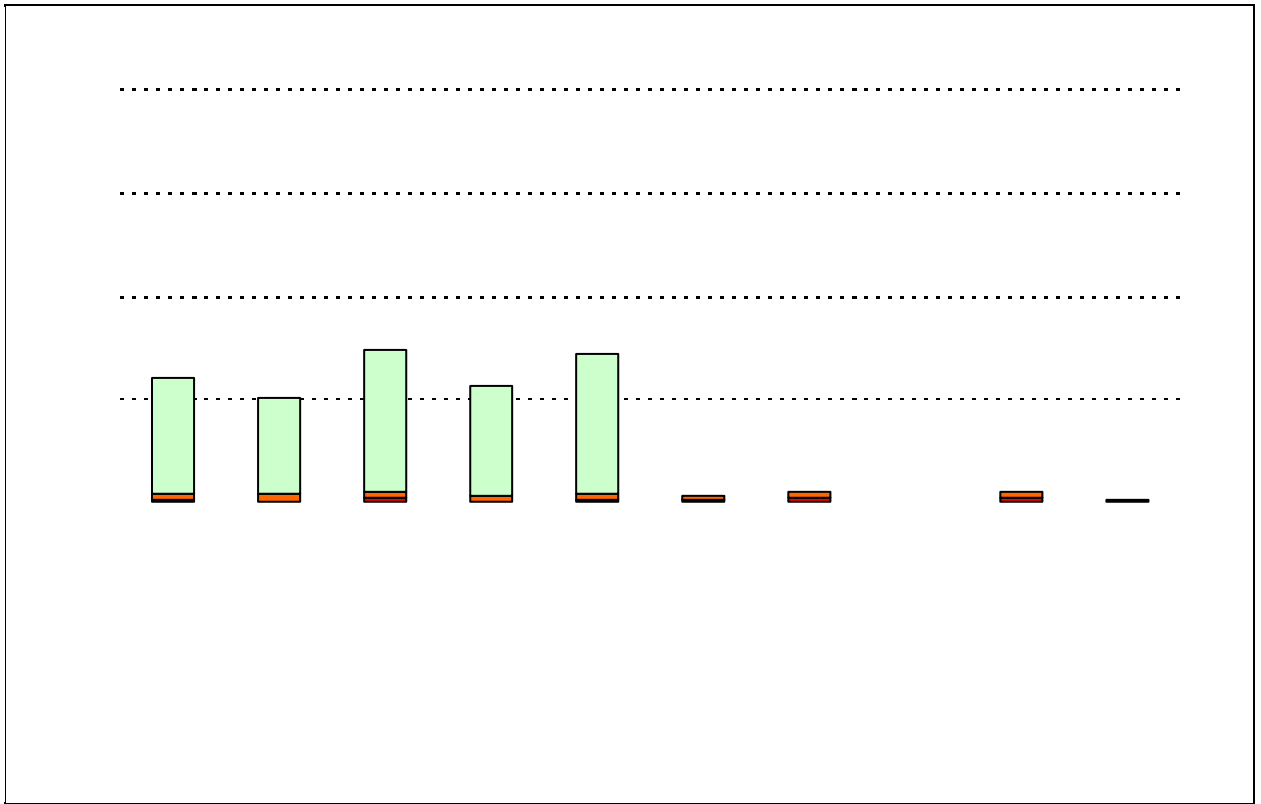
[Redacted]

[Redacted]

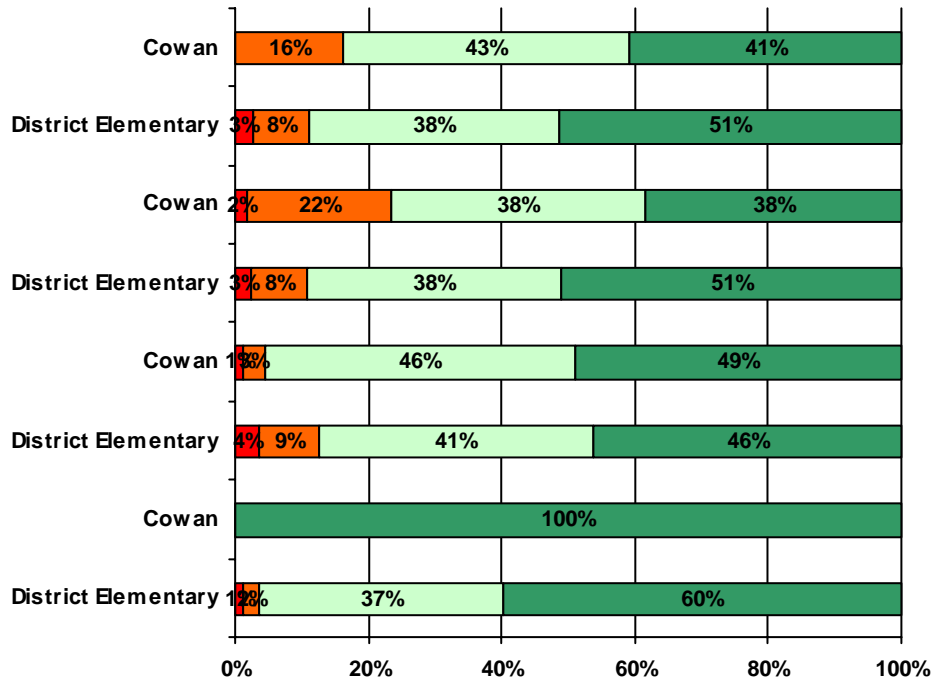
[Redacted]

[Redacted]

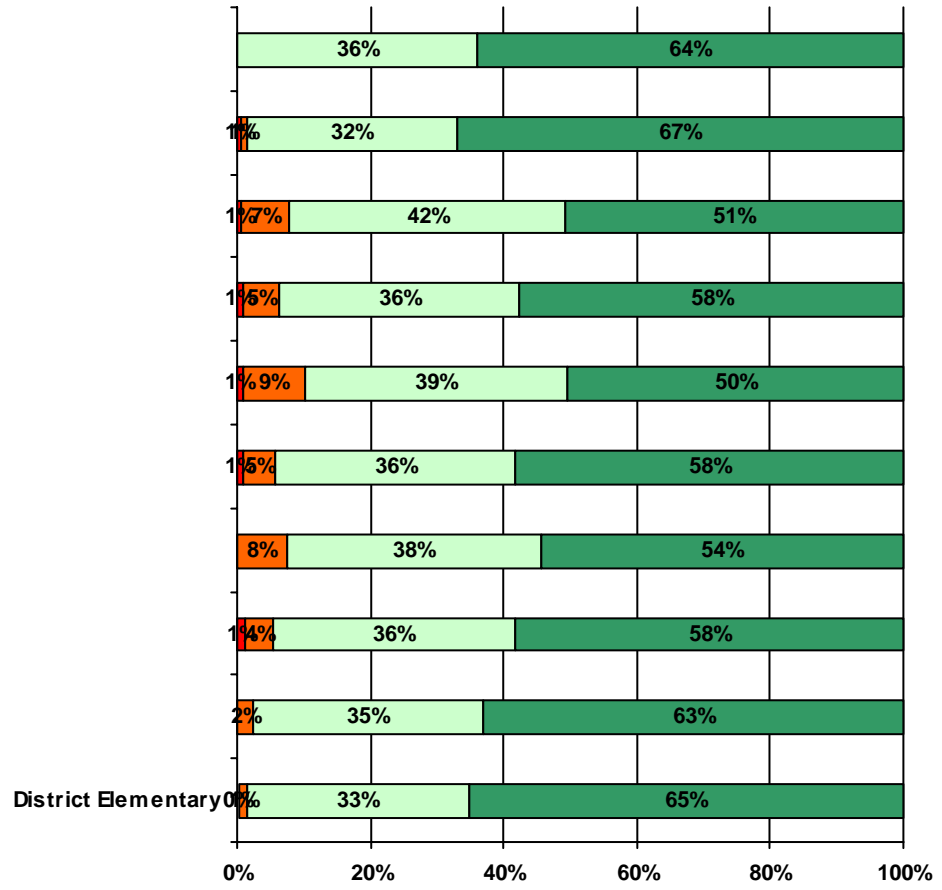




12. School staff provided me with information about the following programs:



13. School staff provided me with the following information about my child:



Item Response Details

Number of Cowan Elementary School Parent Responses, by Response Option

		Strongly Agree	Agree	Disagree	Strongly Disagree	Does Not Apply	Don't Know
3a.	n = 166	106	47	2	2	1	8
3b.	n = 153	39	22	0	1	66	25
3c.	n = 164	93	39	2	0	9	21
3d.	n = 166	115	38	3	1	2	7
3e.	n = 168	131	34	2	1	0	0
4a.	n = 167	97	45	4	2	4	15
4b.	n = 154	34	18	1	1	71	29
4c.	n = 166	76	41	9	0	16	24
4d.	n = 167	92	34	6	3	16	16
4e.	n = 169	125	38	0	1	3	2
5a.	n = 163	64	60	12	3	8	16
5b.	n = 150	25	19	5	2	70	29
5c.	n = 163	56	45	15	1	21	25
5d.	n = 163	48	39	10	4	45	17
5e.	n = 167	117	39	3	0	4	4
6a.	n = 163	63	51	8	2	13	26
6b.	n = 153	22	22	2	0	76	31
6c.	n = 162	52	40	8	2	29	31
6d.	n = 160	42	29	8	0	51	30
6e.	n = 166	108	39	3	0	4	12
7a.	n = 165	113	40	0	1	2	9
7b.	n = 156	50	20	0	0	62	24
7c.	n = 167	104	33	1	1	7	21
7d.	n = 167	106	39	2	0	4	16
7e.	n = 169	123	38	3	0	1	4
*8.	n = 158	27	62	22	7	9	18
9.	n = 168	112	53	1	1	0	1
10.	n = 161	14	15	33	23	2	74

Number of Cowan Elementary School Parent Responses, by Response Option (Continued)

		Strongly Agree	Agree	Disagree	Strongly Disagree	Does Not Apply	Don't Know
11a.	n = 168	87	59	5	0	11	6
11b.	n = 168	97	65	6	0	0	0
11c.	n = 167	101	64	2	0	0	0
11d.	n = 168	100	60	5	0	1	2
11e.	n = 165	78	52	5	0	22	8
11f.	n = 166	80	70	12	0	1	3
11g.	n = 166	98	64	3	0	0	1
12a.	n = 162	35	37	14	0	57	19
12b.	n = 162	23	23	13	1	76	26
12c.	n = 166	74	70	5	2	7	8
12d.	n = 162	1	0	0	0	0	2
13a.	n = 167	106	60	0	0	0	1
13b.	n = 165	79	65	11	1	3	6
13c.	n = 164	59	46	11	1	35	12
13d.	n = 164	50	35	7	0	64	8
13e.	n = 167	104	57	4	0	2	0

*This item included an additional response option, 'I am not aware of AISD's academic benchmark testing.' An additional 13 parents selected this option.