



2006-2007 AISD Parent Survey Results

Crockett High School

The following report contains the results of the 2006-2007 AISD Parent Survey for your campus and all AISD schools at your level. The first section of this report provides a comparison of the campus demographics and the demographics reported by parents who responded to the survey from your campus. The next section describes the percentages of parents selecting specific responses for each survey item, and the final section indicates the actual number of parents who selected each response option. Campus survey results should be examined for areas of strength and opportunities for improvement. Results for all AISD schools at your level and results for your campus from 2005-2006 are presented to provide a reference for comparison. Please note that due to differences in response rates by campus, ranging from 0.1% to 21.36%, district level results are more influenced by some campuses than others.

How many parents responded to the survey in 2005-2006 and 2006-2007, and how does this compare to the number of students in the population each year?

	Campus	District EL	District MS	District HS
# of Parents Responding in 2005-2006	22			
# of Students in 2005-2006	2,003	44,827	15,624	20,081
Ratio of Parent Respondents to Students, 2005-2006	1.1%	24.3%	11.5%	10.4%
# of Parents Responding in 2006-2007	46	11,812	1,354	1,426
	1,976	45,431	15,790	20,279
	2.3%	26%	8.6%	7%

Note: The ratio of parent respondents to students is listed above as a percentage for ease of interpretation; however, it is the number of parents who responded per 100 students enrolled.

What did parents report as their child's ethnicity, and how does this compare to the ethnic distribution of the student population?

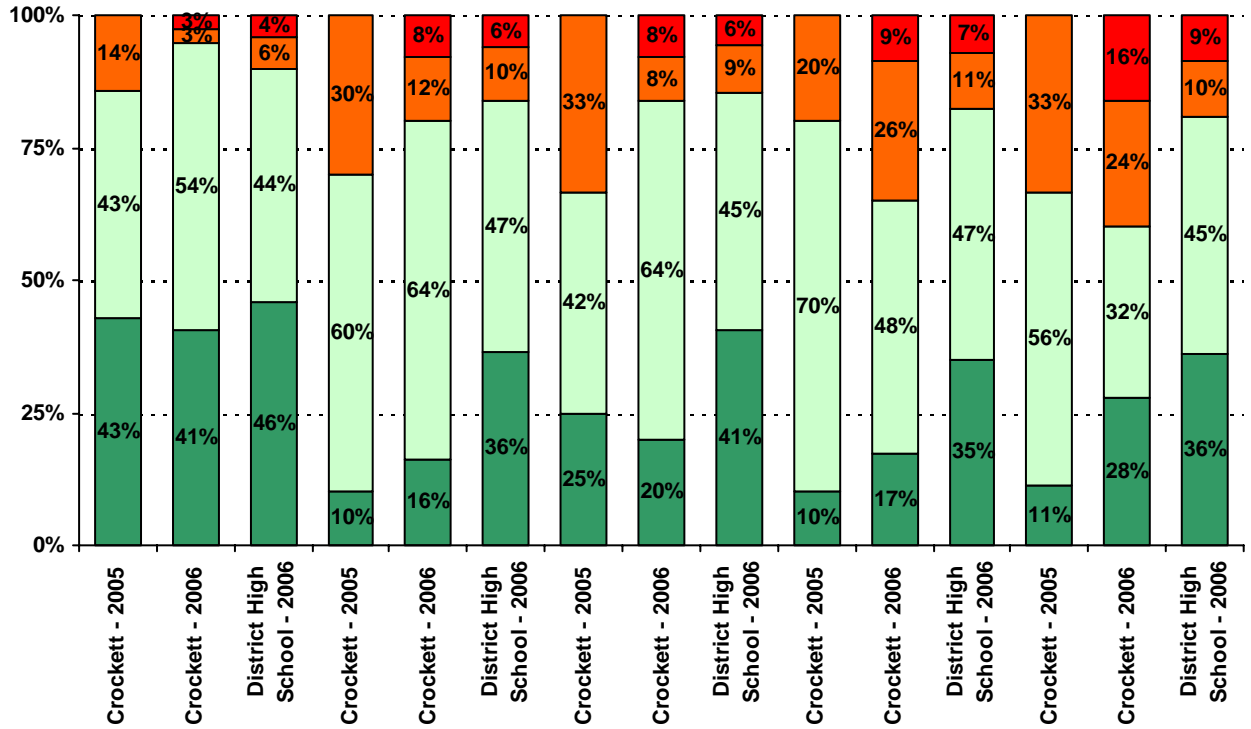
Ethnicity	% of Students, as Reported by Campus Parent Respondents	% of Students in Campus Population
	7.0%	
	2.3%	
	51.2%	
Native American	2.3%	0.4%
White	37.2%	29.1%

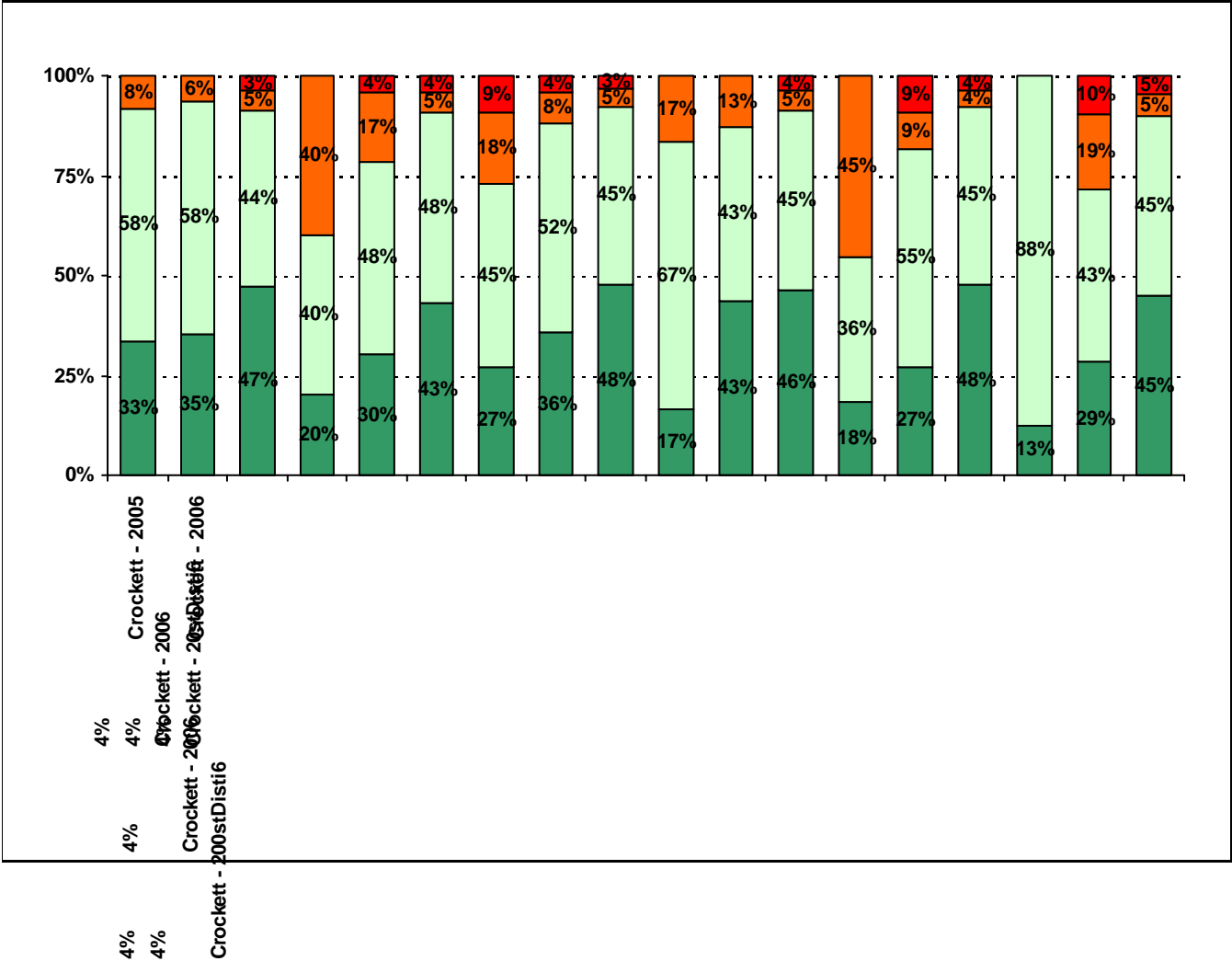
Grade	% of Students, as Reported by Campus Parent Respondents	% of Students in Campus Population

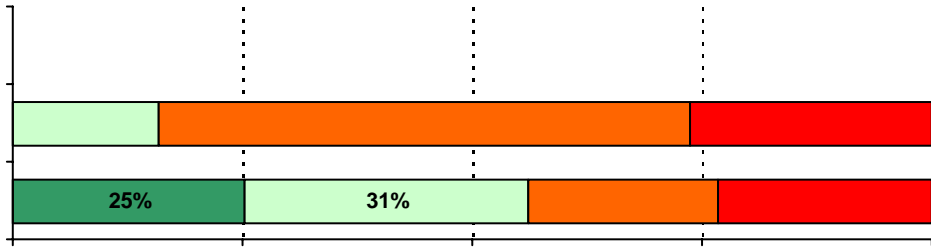
USING THE RESULTS OF THE AISD PARENT SURVEY

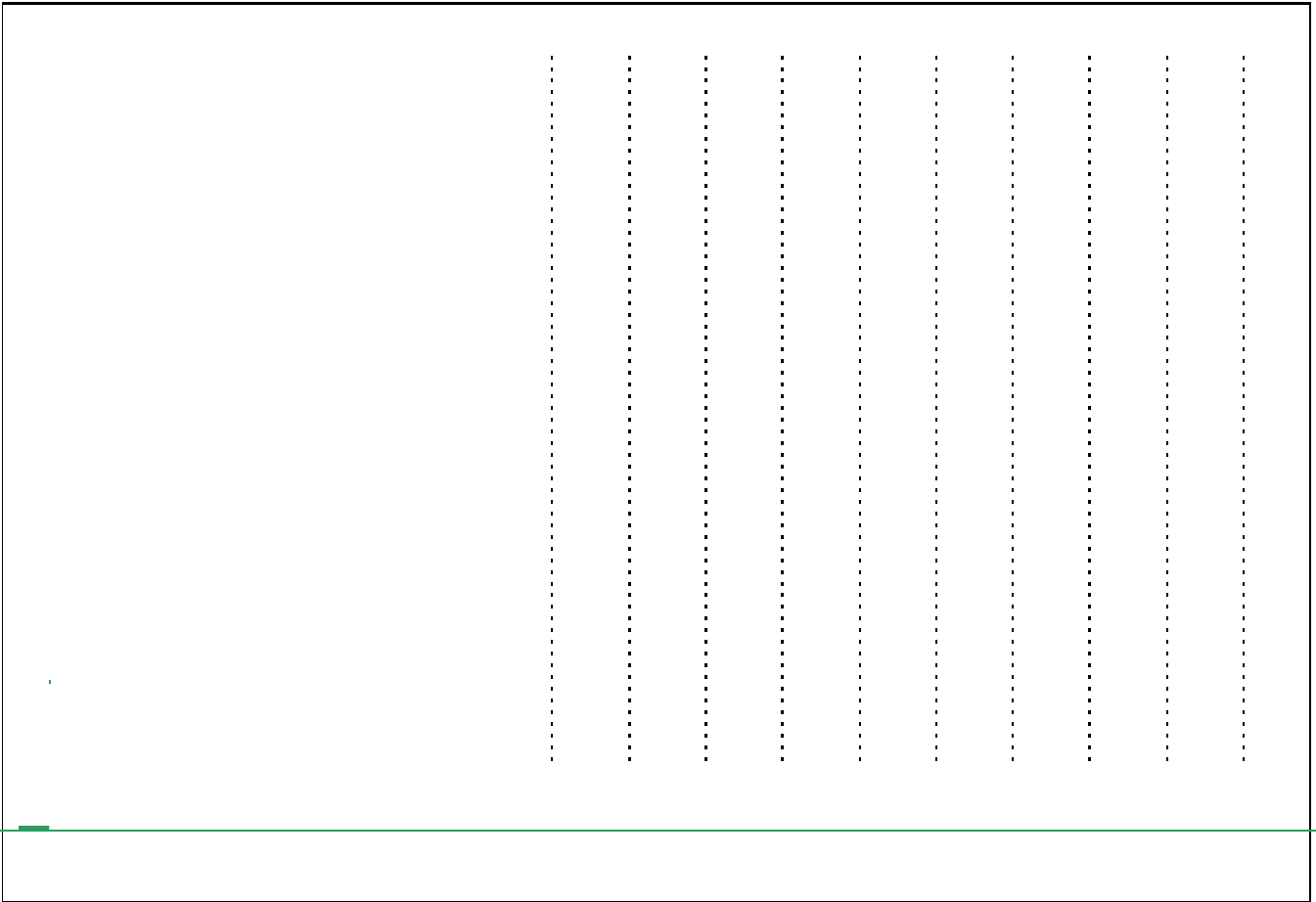


6. The following school staff provide me with opportunities for two-way communication.









.....

.....

.....

.....

.....

.....

.....

.....

.....

Required

A rectangular box with a solid black border, containing four horizontal dashed lines. The lines are evenly spaced and extend across most of the width of the box, leaving small gaps at the left and right edges. This layout is typical for a writing template or a set of guidelines for a document.

Item Response Details

Number of Crockett High School Parent Responses, by Response Option

		Strongly Agree	Agree	Disagree	Strongly Disagree	Don't Know/NA
3a.	n = 37	7	8	6	4	7
3b.	n = 37	13	12	0	1	11
3c.	n = 37	8	20	1	2	6
3d.	n = 37	11	16	4	2	4
3e.	n = 38	16	18	2	1	1
6a.	n = 36	7	8	6	4	11
6b.	n = 36	4	11	6	2	13
6c.	n = 36	5	16	2	2	11
6d.	n = 36	4	16	3	2	11
6e.	n = 38	15	20	1	1	1
7a.	n = 36	6	9	6	7	8
7b.	n = 36	5	11	5	3	12
7c.	n = 37	8	15	4	2	8
7d.	n = 34	2	14	5	3	10
7e.	n = 38	18	12	7	0	1
8a.	n = 35	8	8	5	5	9
8b.	n = 34	5	10	0	4	15
8c.	n = 35	9	13	2	2	9
8d.	n = 35	3	11	0	2	19
8e.	n = 37	14	16	3	0	4
9a.	n = 36	6	12	2	2	14
9b.	n = 34	10	10	3	0	11
9c.	n = 35	9	13	2	1	10
9d.	n = 34	7	11	4	1	11
9e.	n = 36	11	18	2	0	5

Number of Crockett High School Parent Responses, by Response Option
(Continued)

		Strongly Agree	Agree	Disagree	Strongly Disagree	Don't Know/NA
13a.	n = 36	9	24	2	1	0
13b.	n = 36	6	21	8	1	0
13c.	n = 36	6	19	8	2	1
14a.	n = 36	6	17	9	2	2
14b.	n = 35	6	18	8	2	1
14c.	n = 35	3	13	13	2	4
15a.	n = 36	9	18	8	0	1
15b.	n = 33	3	9	13	7	1
15c.	n = 33	2	15	11	5	0
15d.	n = 36	7	16	9	3	1
15e.	n = 34	4	20	7	0	3
16a.	n = 35	5	17	10	2	1
16b.	n = 33	4	8	12	5	4
16c.	n = 33	5	5	10	8	5
16d.	n = 33	5	9	7	8	4
16e.	n = 33	1	10	9	7	6
17.	n = 35	14	19	0	1	1
18.	n = 33	7	19	5	1	1
		Yes	No			
19a.	n = 46	24	22			
19b.	n = 44	29	15			
19c.	n = 46	25	21			
19d.	n = 45	29	16			
19e.	n = 46	23	23			
19f.	n = 45	32	13			
19g.	n = 45	32	13			
20.	n = 46					
		High School diploma	Certificate/ Associates degree	Bachelors degree	Graduate/ Professional degree	Military service
		35	12	33	18	2