

2004-2005 AISD Parent Survey Results

Dawson Elementary School

The following report contains the results of the 2004-2005 AISD Parent Survey for your campus and all AISD schools at your level. The first section of this report provides a comparison of the campus demographics and the demographics reported by parents who responded to the survey from your campus. The next section describes the percentage of parents selecting specific responses for each survey item, and the final section indicates the actual number of parents who selected each response option. Campus survey results should be examined for areas of strength and opportunities for improvement. Results for all AISD schools at your level are presented to provide a reference for comparison.

How many parents responded to the survey in 2003-2004 and 2004-2005, and how does this compare to the number of students in the population each year?

	Campus	District EL	District MS	District HS
# of Parents Responding in 2003-2004	55	16,070	2,721	1,640
# of Students in 2003-2004	426	42,594	15,819	19,847
<i>Ratio of Parent Respondents to Students, 2003-04</i>	12.9%	37.7 %	17.2 %	8.3 %
# of Parents Responding in 2004-2005	64	12,137	2,007	2,700
# of Students in 2004-2005	379	43,566	15,705	19,976
<i>Ratio of Parent Respondents to Students in 2004-05</i>	16.9%	27.9 %	12.8 %	13.5 %

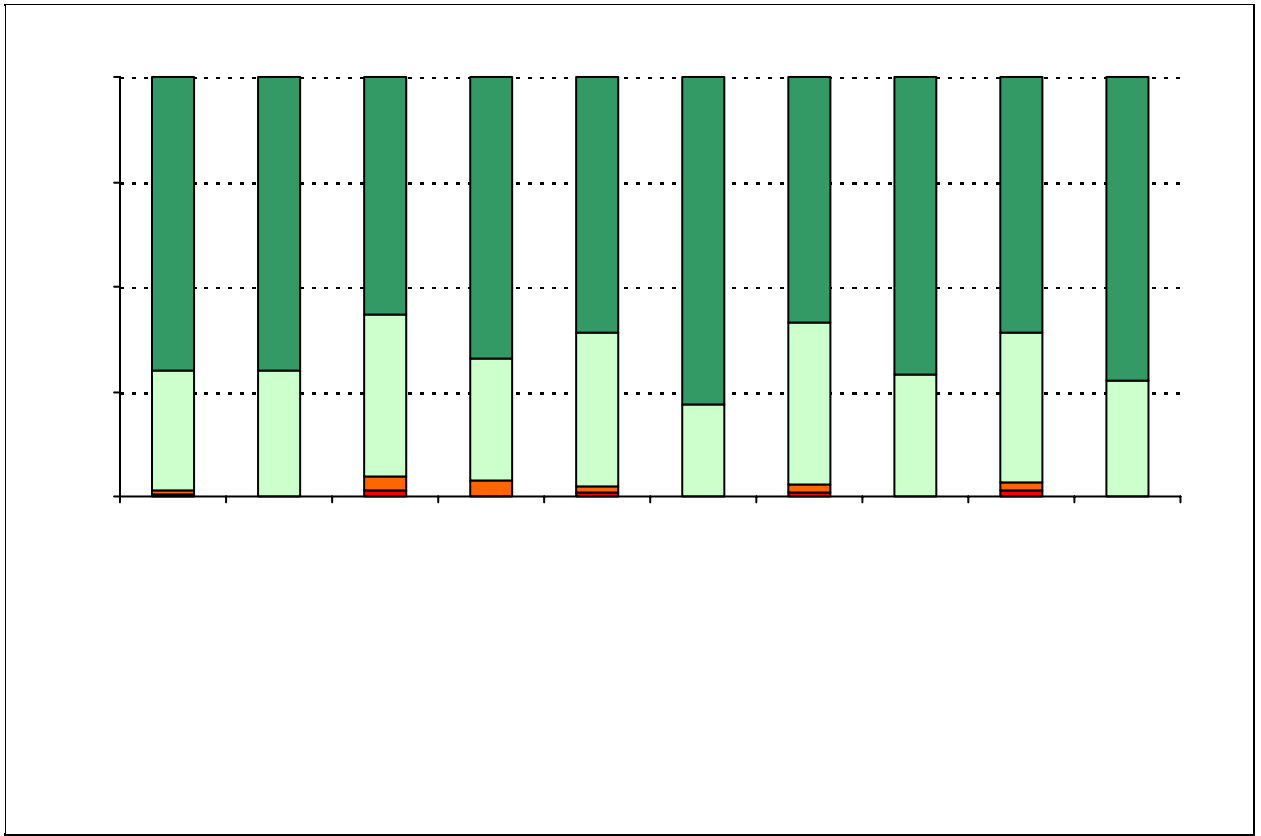
Note: The ratio of parent respondents to students is listed above as a percentage for ease of interpretation; however, it is the number of parents who responded per 100 students enrolled.

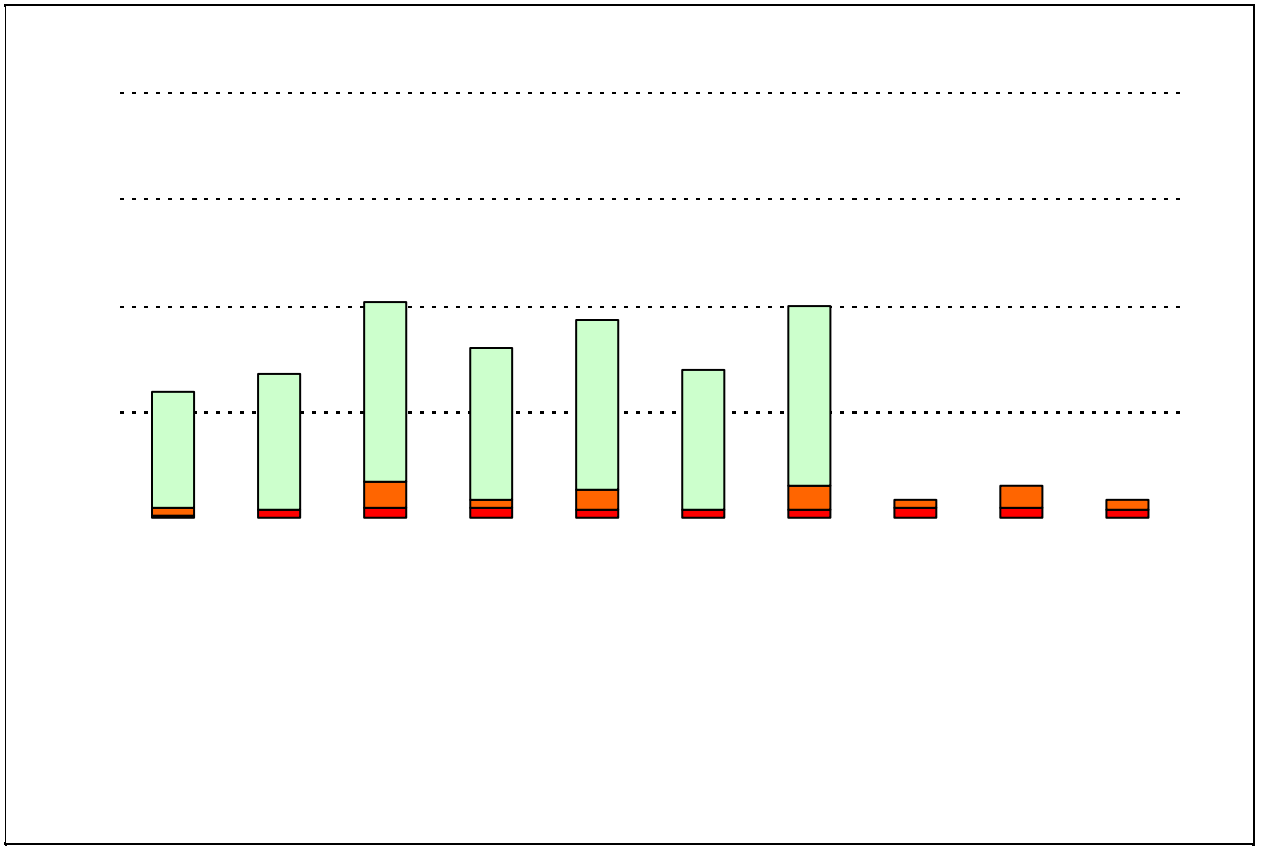
% of Students, as Reported by Parent Respondents	
African American	9.0%
Asian	0.8%
Hispanic	82.1%
Native American	0.0%
White	8.2%

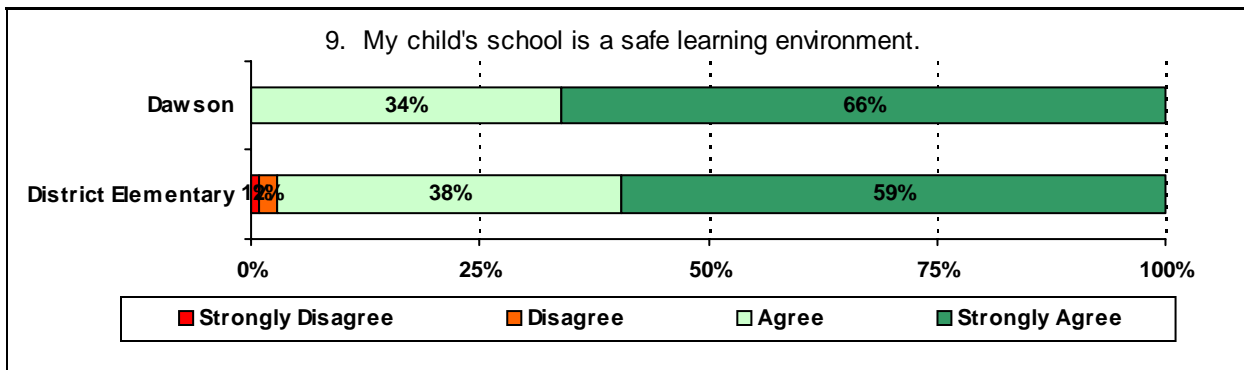
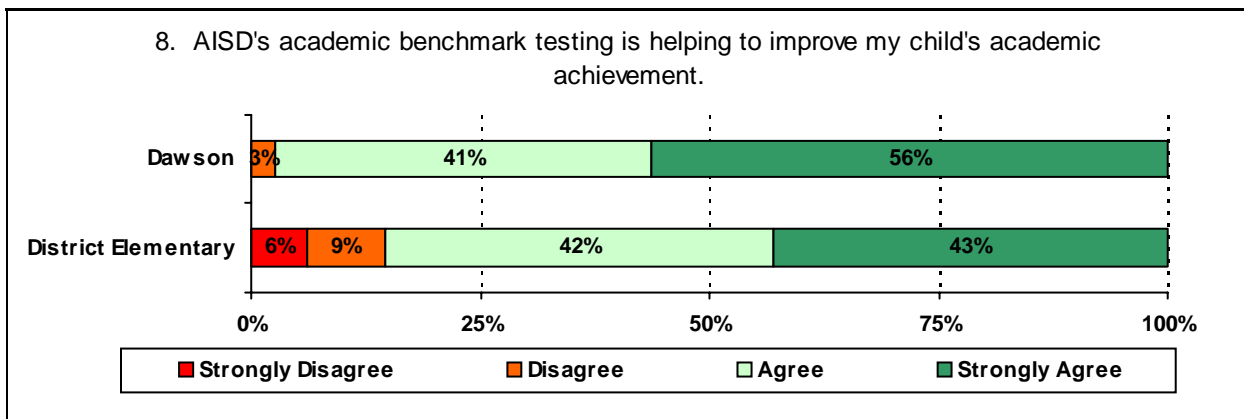
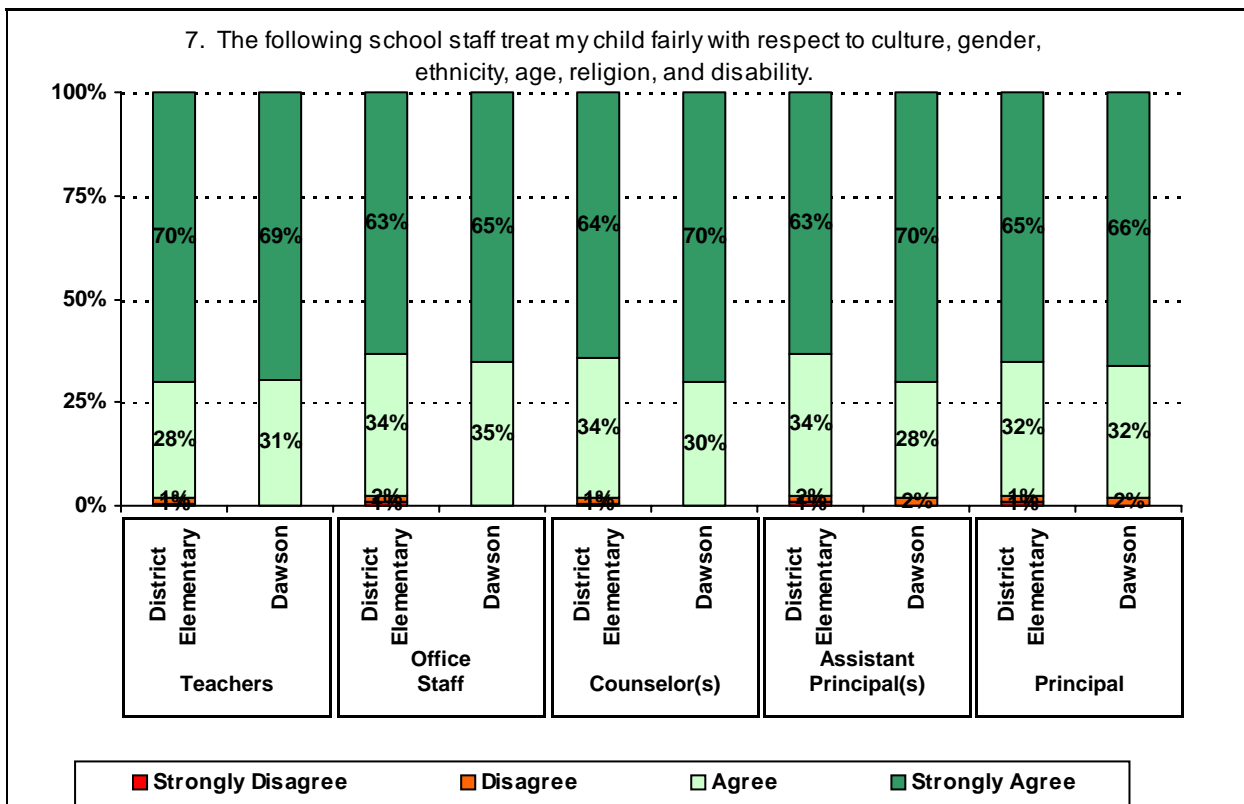
What did parents report as their child's grade, and how does this compare to the grade level

Grade	% of Students, as Reported by Parent Respondents	% of Students in Campus Population
EC	1.7%	2.9%
PK	6.9%	11.3%
K	44.8%	19.3%
1st	1.7%	14.5%
2nd	1.7%	13.2%
3rd	29.3%	14.5%
4th	8.6%	10.3%
5th	5.2%	14.0%
6th	N/A	N/A

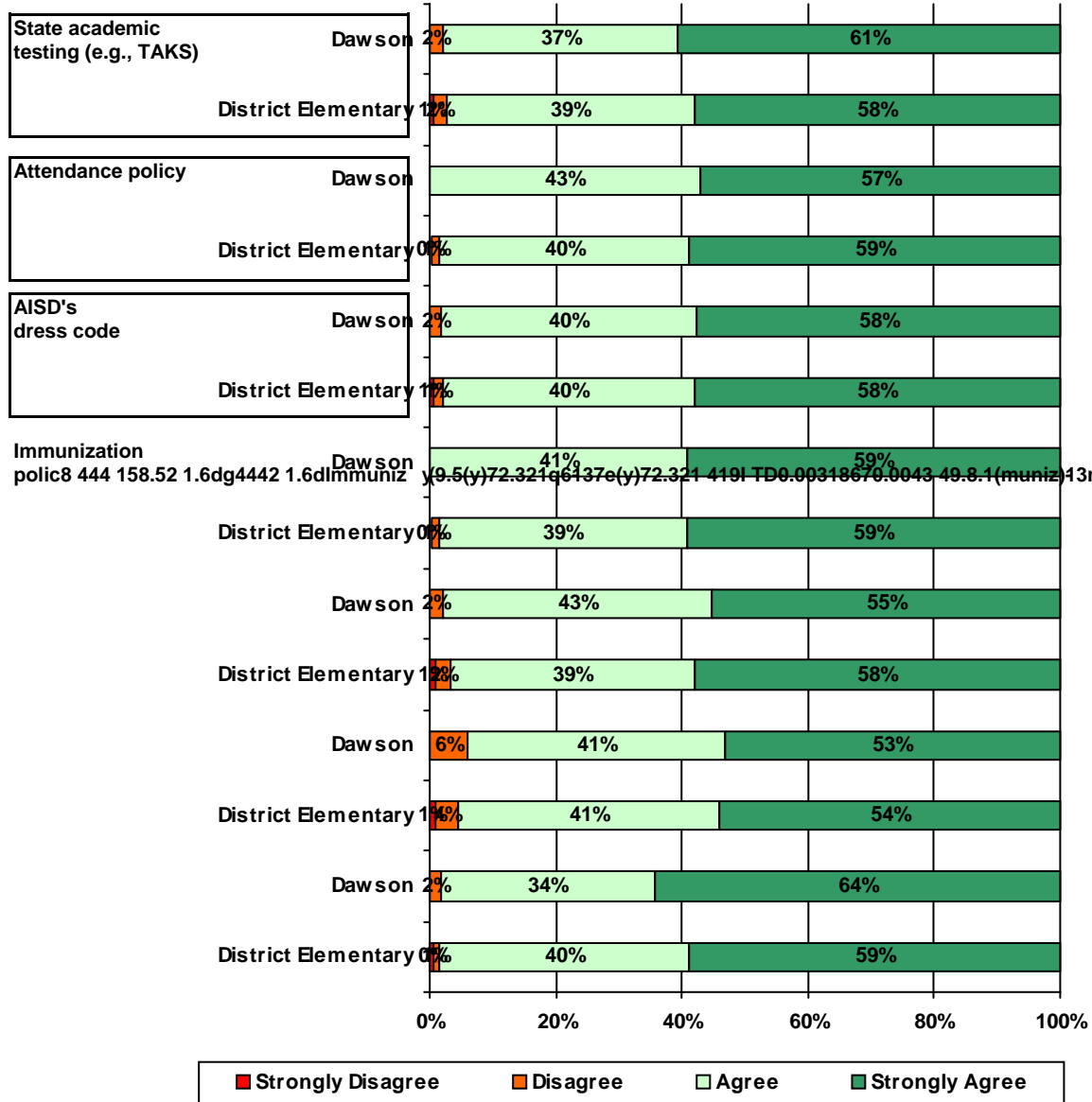
Note: Student population data are based on Fall 2003 and Fall 2004 PEIMS data submitted by the district to TEA, and may differ from the official AEIS report.



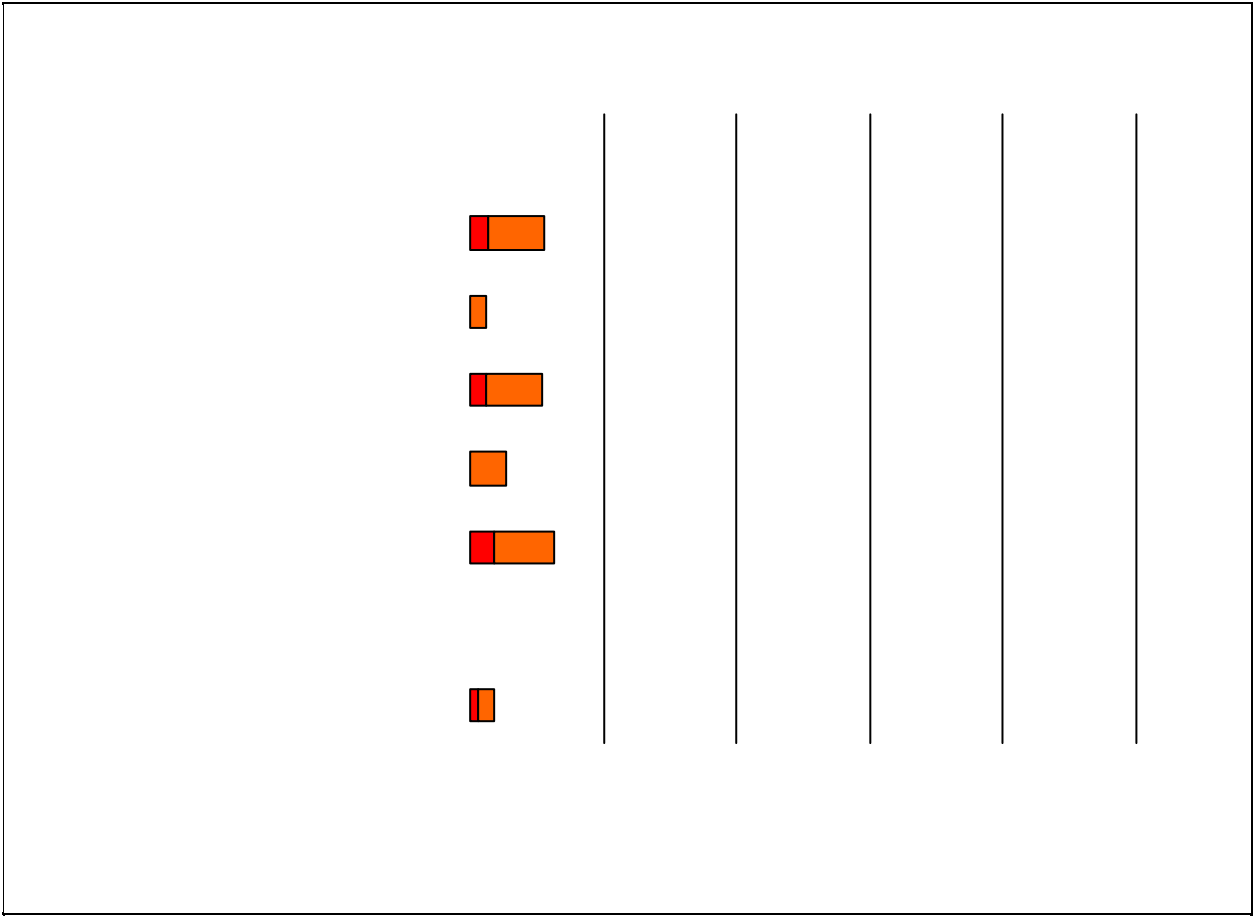




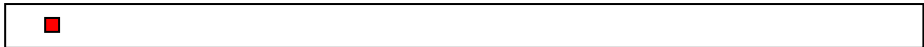
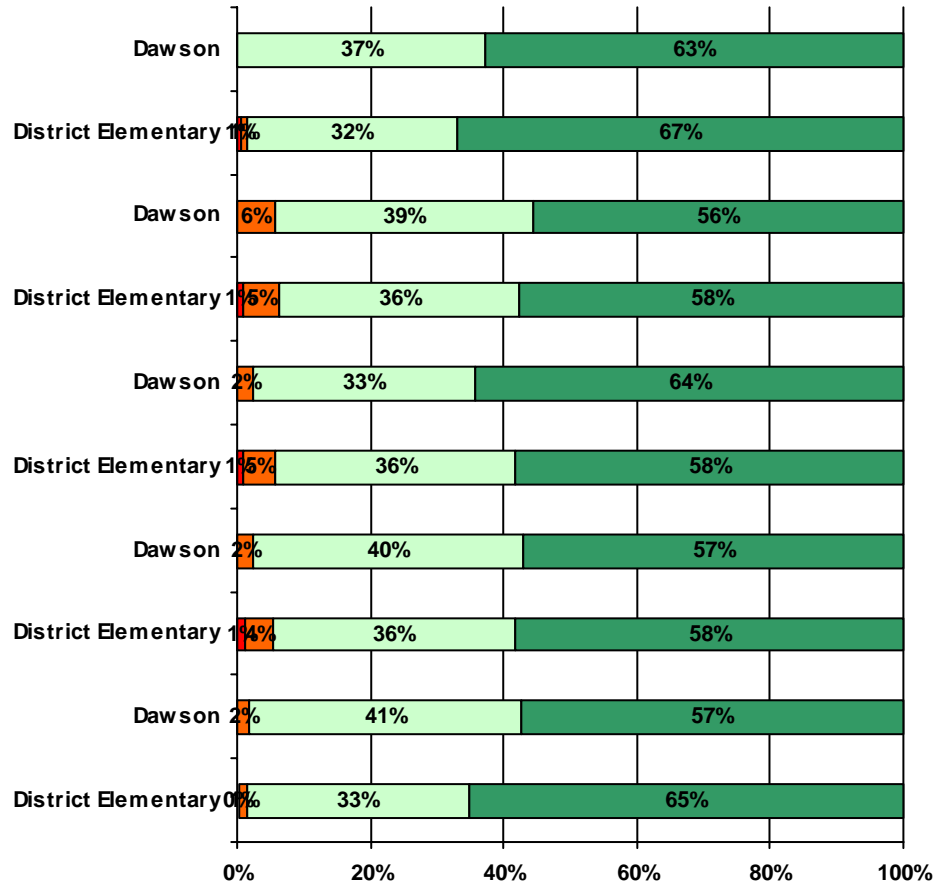
11. School staff provided me with information about the following school and district policies:



8 444 158.52 1.6dg4442 1.6dimmuniz y 9.5(y)72.321 66137e(y)72.321 4191 TD0.00318670.0043 49.8.1(muniz)13nit.173 039608 sc564 TP3 0.3



13. School staff provided me with the following information about my child:



Item Response Details

Number of Dawson Elementary School Parent Responses, by Response Option

		Strongly Agree	Agree	Disagree	Strongly Disagree	Does Not Apply	Don't Know
3a.	n = 60	39	15	0	0	1	5
3b.	n = 58	37	15	0	0	1	5
3c.	n = 58	39	11	0	0	1	7
3d.	n = 59	37	16	2	0	0	4
3e.	n = 61	42	18	0	0	0	1
4a.	n = 59	35	17	0	2	1	4
4b.	n = 58	32	16	0	2	1	7
4c.	n = 57	34	16	0	1	0	6
4d.	n = 61	35	19	2	1	0	4
4e.	n = 59	37	19	1	1	0	1
5a.	n = 58	28	19	1	1	4	5
5b.	n = 57	27	17	1	1	4	7
5c.	n = 58	32	16	0	1	3	6
5d.	n = 55	27	16	1	1	3	7
5e.	n = 59	37	18	0	1	2	1
6a.	n = 57	29	14	0	1	4	9
6b.	n = 57	28	15	0	1	4	9
6c.	n = 57	29	15	0	1	4	8
6d.	n = 59	30	13	1	1	4	10
6e.	n = 61	35	17	0	1	3	5
7a.	n = 58	35	17	1	0	0	5
7b.	n = 59	37	15	1	0	0	6
7c.	n = 58	37	16	0	0	0	5
7d.	n = 57	34	18	0	0	0	5
7e.	n = 60	41	18	0	0	0	1
*8.	n = 53	22	16	1	0	1	7
9.	n = 59	37	19	0	0	0	3
10.	n = 53	10	16	2	0	1	24

Number of Dawson Elementary School Parent Responses, by Response Option (Continued)

		Strongly Agree	Agree	Disagree	Strongly Disagree	Does Not Apply	Don't Know
11a.	n = 57	31	19	1	0	3	3
11b.	n = 56	32	24	0	0	0	0
11c.	n = 55	30	21	1	0	0	3
11d.	n = 54	32	22	0	0	0	0
11e.	n = 53	26	20	1	0	5	1
11f.	n = 53	26	20	3	0	1	3
11g.	n = 56	36	19	1	0	0	0
12a.	n = 54	26	14	0	0	10	4
12b.	n = 54	24	17	1	0	9	3
12c.	n = 53	19	16	2	0	7	9
12d.	n = 54	7	8	0	0	1	1
13a.	n = 59	37	22	0	0	0	0
13b.	n = 54	30	21	3	0	0	0
13c.	n = 52	27	14	1	0	5	5
13d.	n = 54	24	17	1	0	10	2
13e.	n = 55	31	22	1	0	0	1

*This item included an additional response option, 'I am not aware of AISD's academic benchmark testing.' An additional 6 parents selected this option.