



# 2006-2007 AISD Parent Survey Results

## Dawson Elementary School

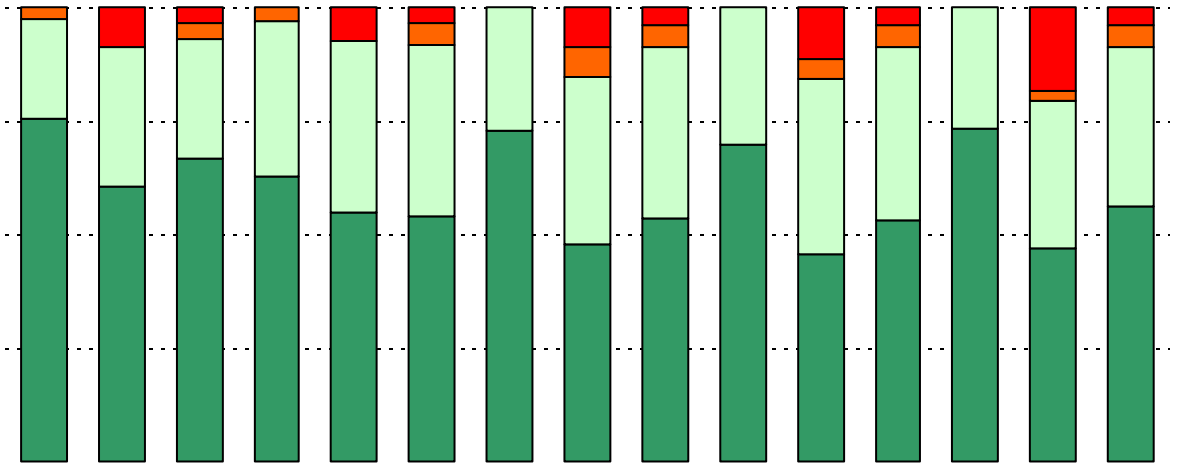
The following report contains the results of the 2006-2007 AISD Parent Survey for your campus and all AISD schools at your level. The first section of this report provides a comparison of the campus demographics and the demographics reported by parents who responded to the survey from your campus. The next section describes the percentages of

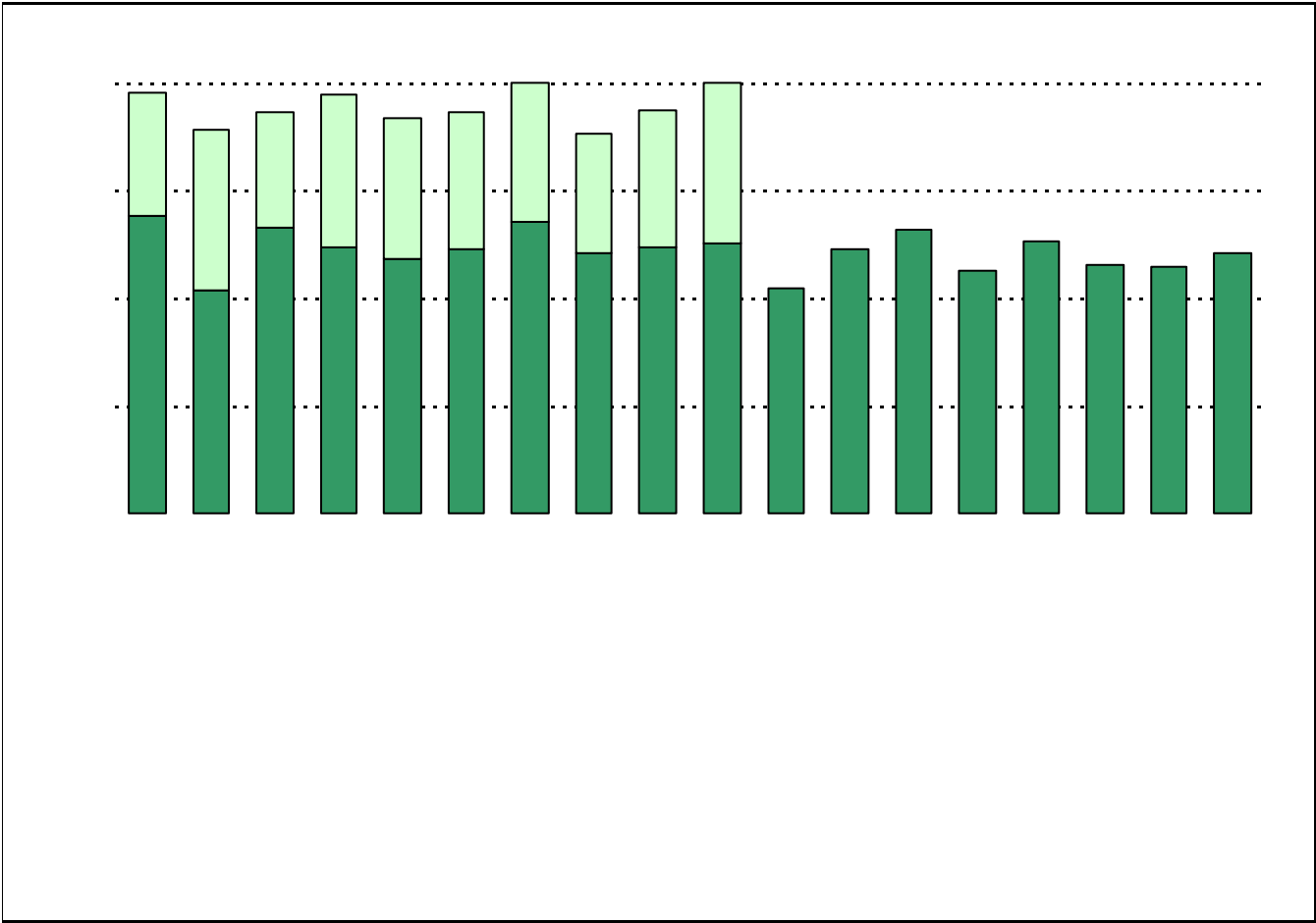
	44 381 <i>11.5%</i>
	63 373 <i>16.9%</i>

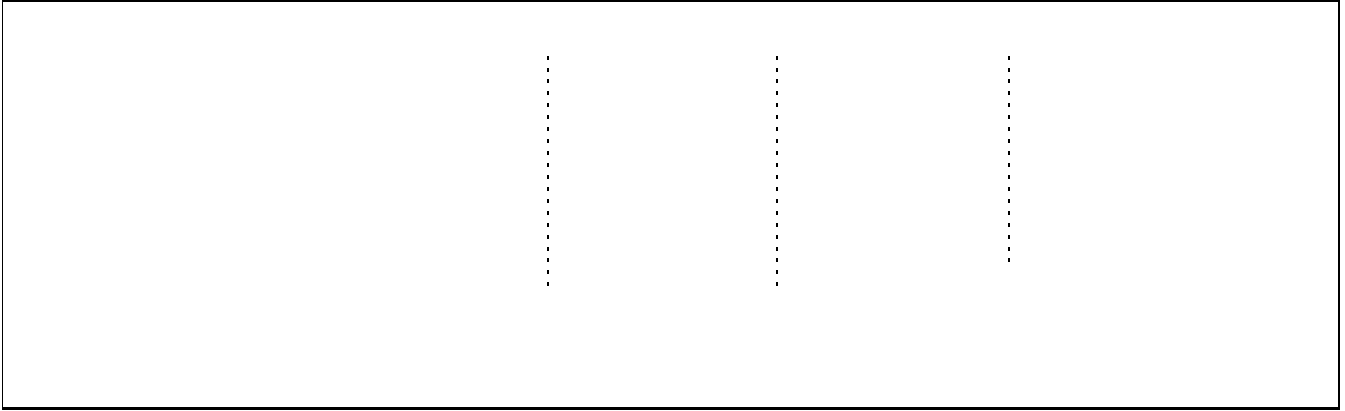
	3.8%	
	0.0%	0.0%
	90.6%	86.1%
	1.9%	0.0%
	3.8%	5.9%

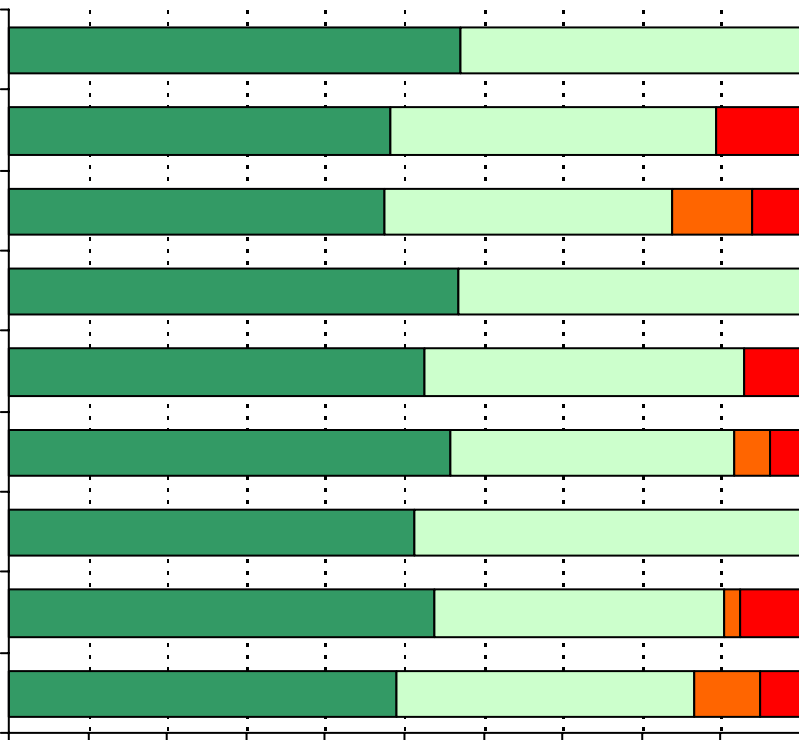


A large rectangular box with a solid black border, containing four horizontal dotted lines spaced evenly from top to bottom. This is a template for writing.





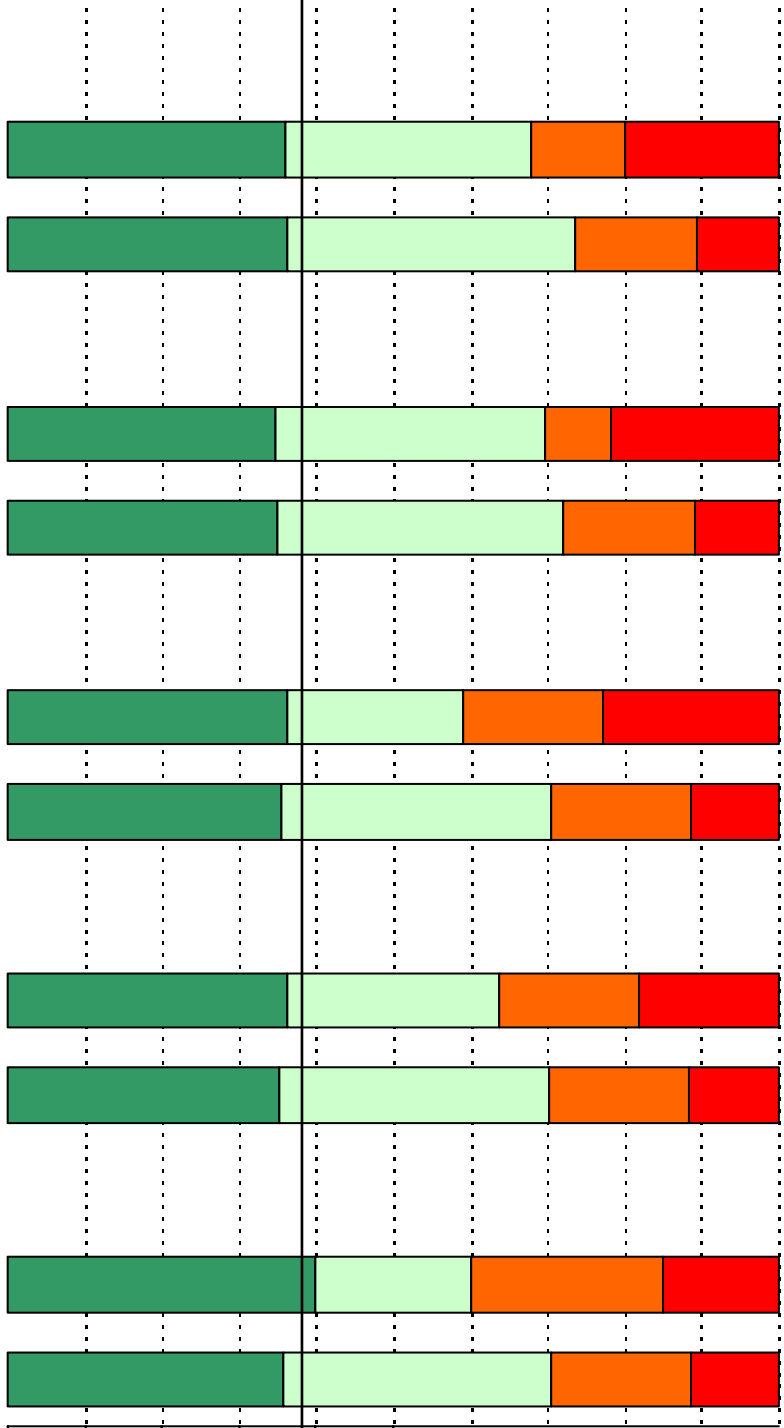




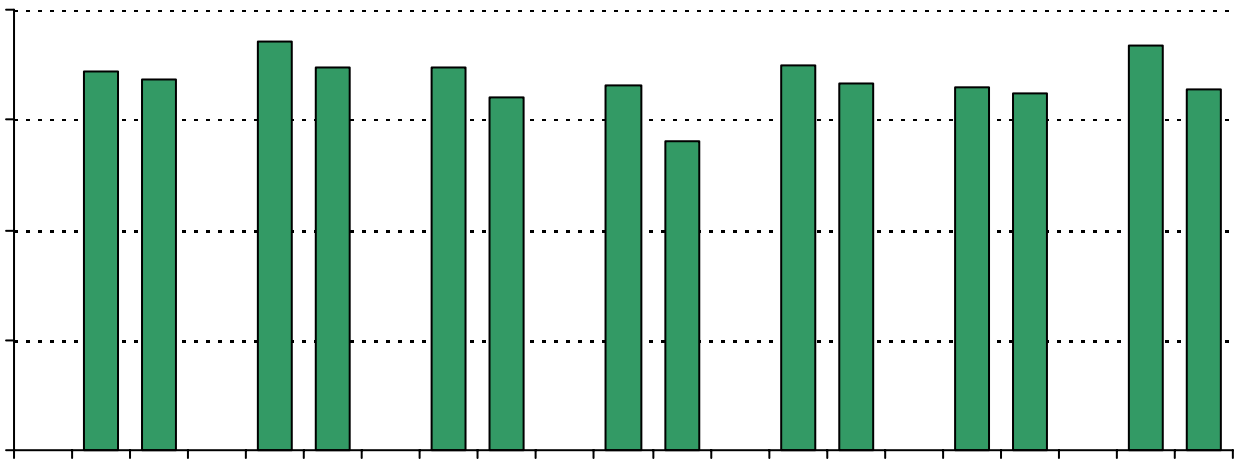
**Required  
curriculum**



36%

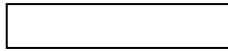
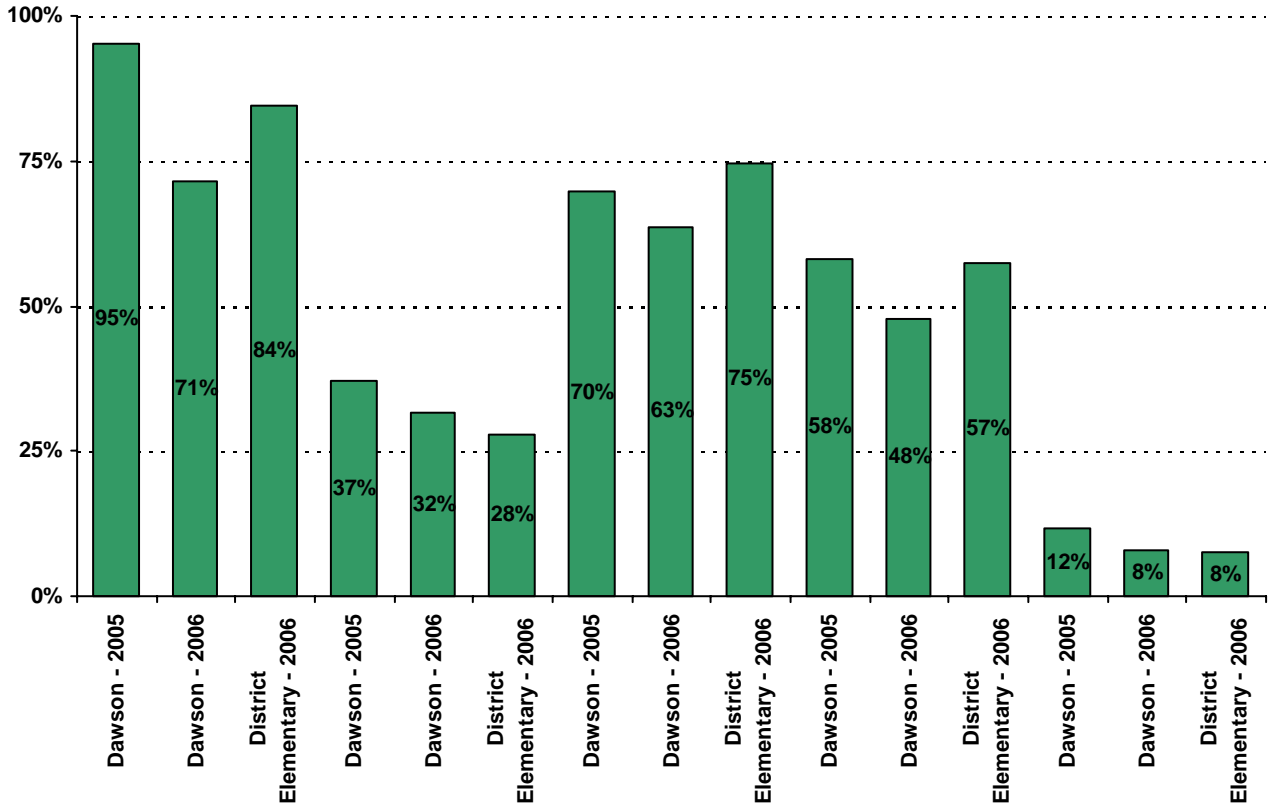


eme0..1361.i0493...0.602he fol-6.2.2(vT 1 j, 0.602)-4.3(o)

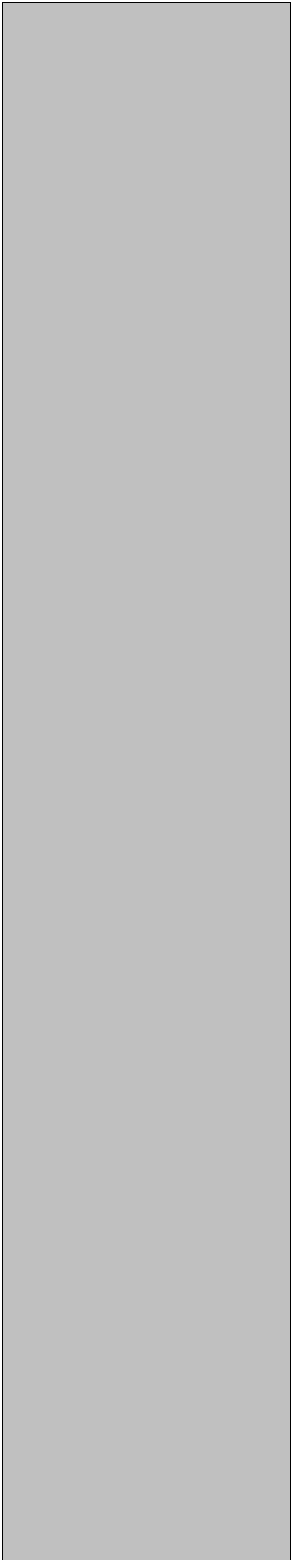


\* Item(s) #17, #18, #19 added to the survey in 2006

20. My goals for my child include the following plans:



Number of Dawson Elementary School Parent Responses, by Response Option



29	16	0	6	6
22	15	1	5	9
26	11	0	4	6
31	20	0	4	3
34	17	0	5	1
23	16	1	9	5
20	17	2	5	7
22	17	3	4	5
29	20	0	4	3
34	17	0	5	1
23	11	1	7	7
17	13	2	5	9
21	15	1	5	6
21	17	1	4	6
31	17	1	6	0
17	15	1	7	12
14	15	2	5	13
17	18	0	5	11
17	18	0	5	11
24	22	1	5	4
27	13	1	7	7
23	14	3	4	7
26	12	1	4	7
29	16	0	4	3
28	20	1	5	2

