



## 2004-2005 AISD Parent Survey Results

The following report contains the results of the 2004-2005 AISD Parent Survey for your campus and all AISD schools at your level. The first section of this report provides a comparison of the campus demographics and the demographics reported by parents who responded to the survey from your campus. The next section describes the percentage of parents selecting specific responses for each survey item, and the final section indicates the actual number of parents who selected each response option.

<b>Asian</b>	0.7%	1.2%
<b>Hispanic</b>	57.6%	72.7%
<b>Native American</b>	0.0%	0.0%
<b>White</b>	7.9%	3.2%

**How many parents responded to the survey in 2003-2004 and 2004-2005, and how does this compare to the number of students in the population each year?**

	Campus	District EL	District MS	District HS
<b># of Parents Responding in 2003-2004</b>	87	16,070	2,721	1,640
<b># of Students in 2003-2004</b>	741	42,594	15,819	19,847
<b><i>Ratio of Parent Respondents to Students, 2003-04</i></b>	<b><i>11.7%</i></b>	<b><i>37.7 %</i></b>	<b><i>17.2 %</i></b>	<b><i>8.3 %</i></b>
<b># of Parents Responding in 2004-2005</b>	115	12,137	2,007	2,700
<b># of Students in 2004-2005</b>	740	43,566	15,705	19,976
<b><i>Ratio of Parent Respondents to Students in 2004-05</i></b>	<b><i>15.5%</i></b>	<b><i>27.9 %</i></b>	<b><i>12.8 %</i></b>	<b><i>13.5 %</i></b>

Note: The ratio of parent respondents to students is listed above as a percentage for ease of interpretation; however, it is the number of parents who responded per 100 students enrolled.

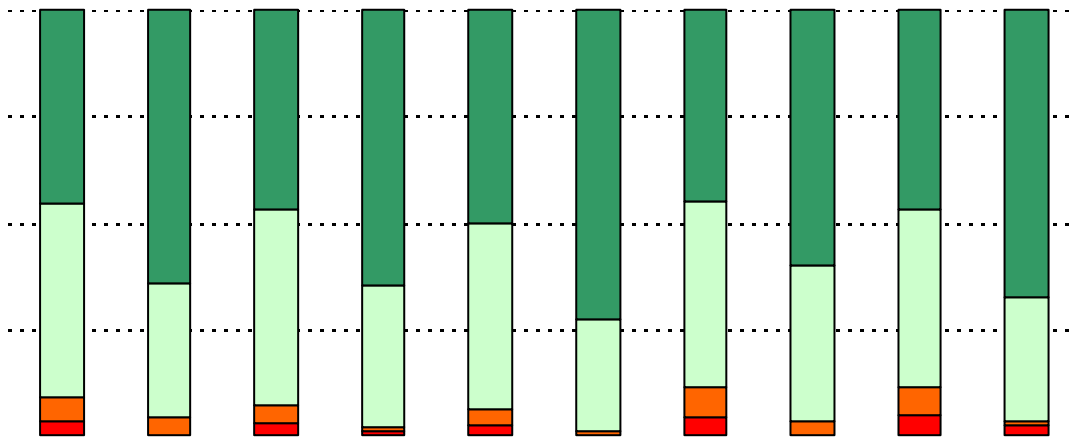
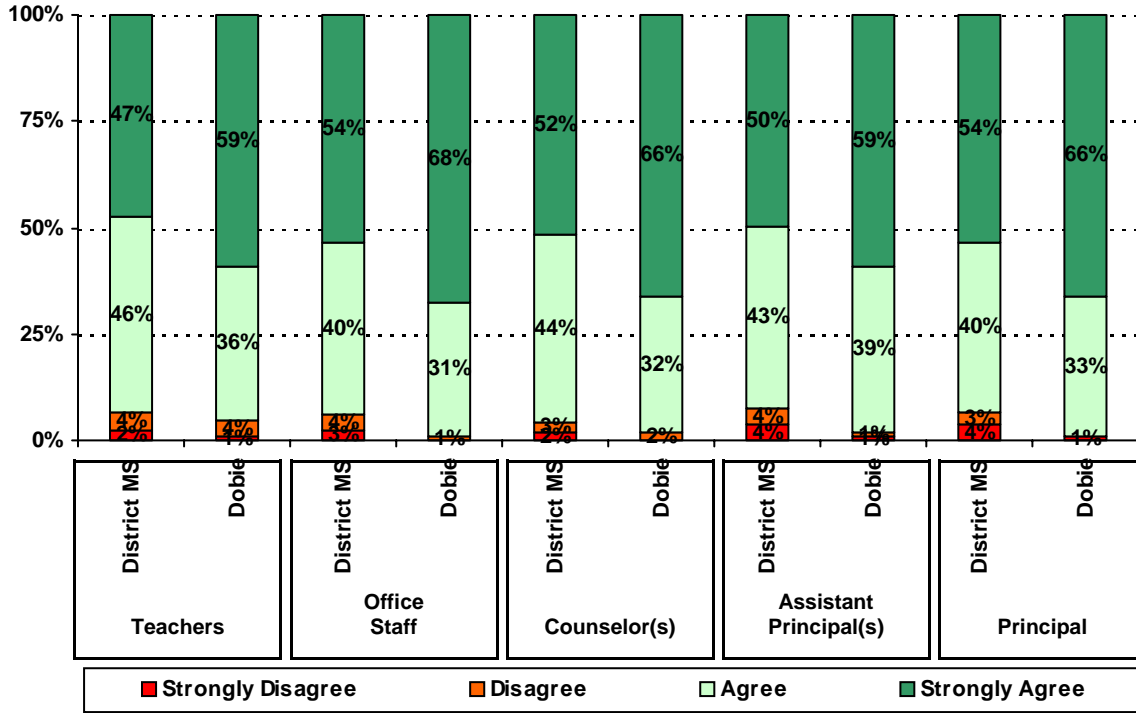
**What did parents report as their child's ethnicity, and how does this compare to the ethnic distribution of the student population?**

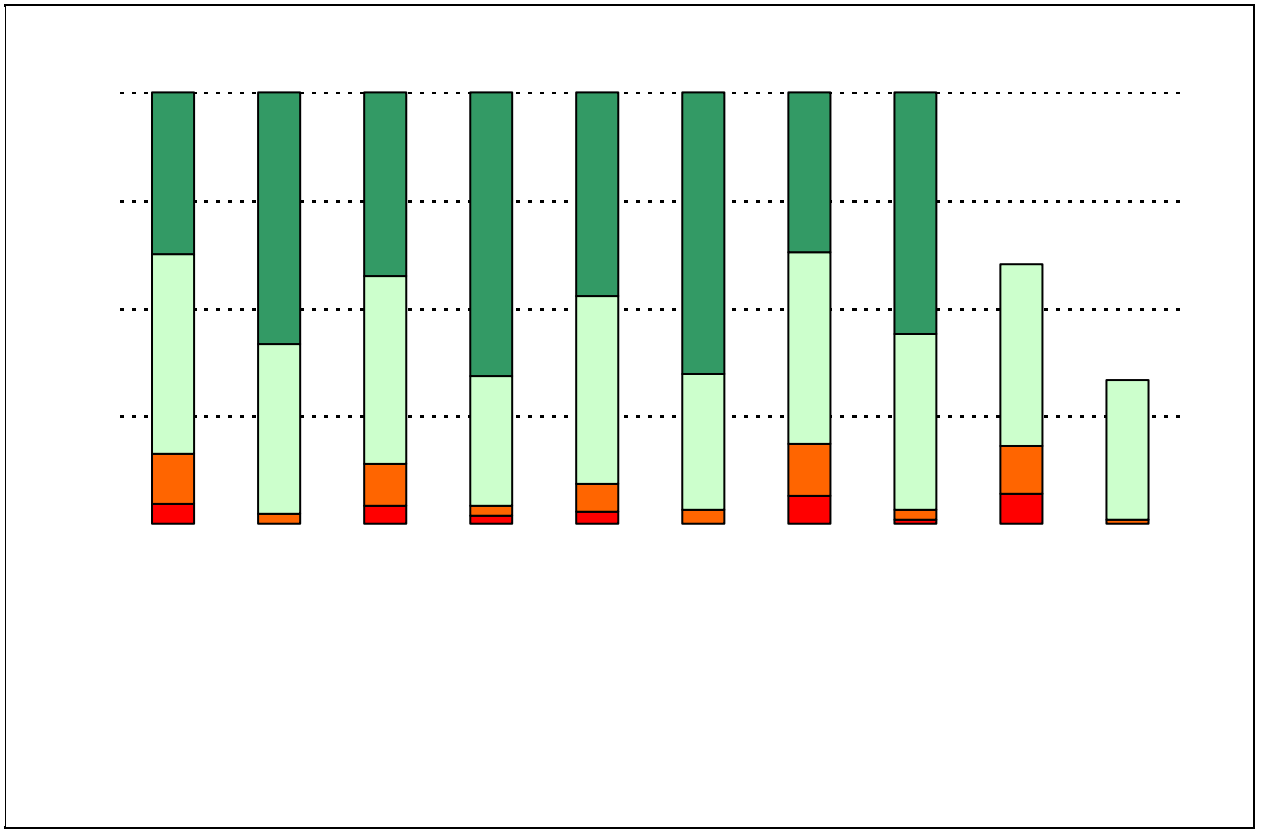
Each survey item is presented below, followed by a bar graph containing results for your campus and for all campuses at your level.

Please examine the results below to determine areas of strength and opportunities for improvement. Large percentages of "Strongly Agree" and "Agree" indicate areas in which your campus staff excel, and large percentages of "Disagree" and "Strongly Disagree" indicate areas for possible improvement.

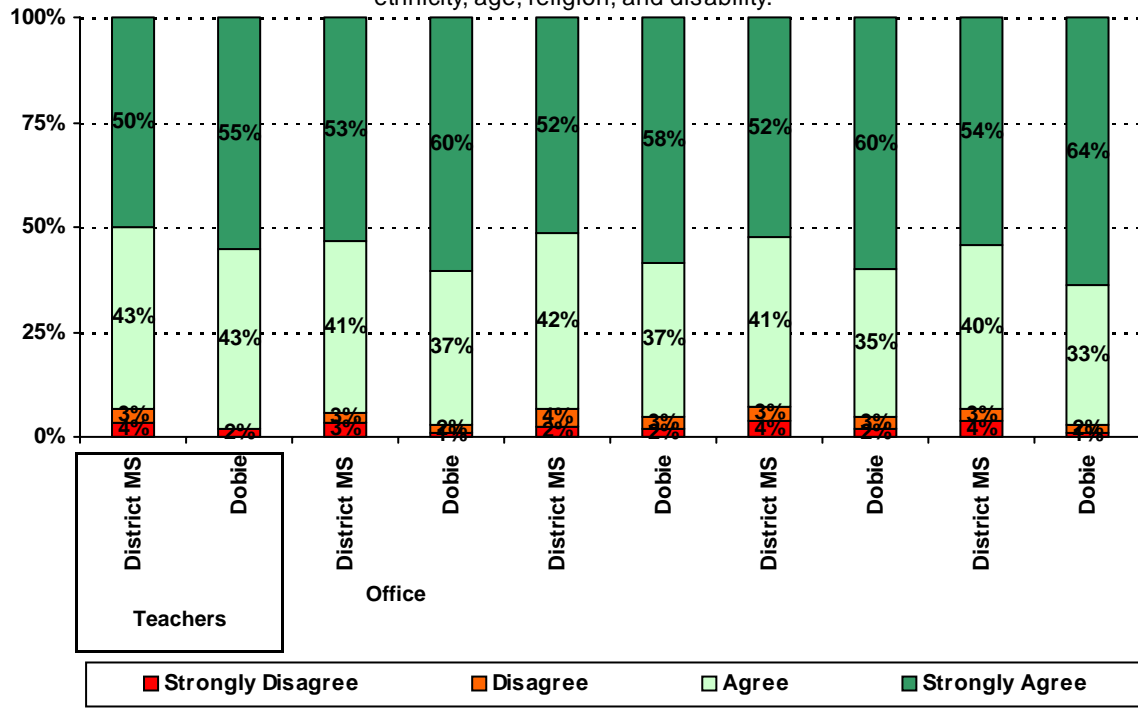
In addition, please compare the percentage of parents from your campus selecting each response option with the percentage of all AISD parents selecting each response option.

3. The following school staff treat me with courtesy and respect.

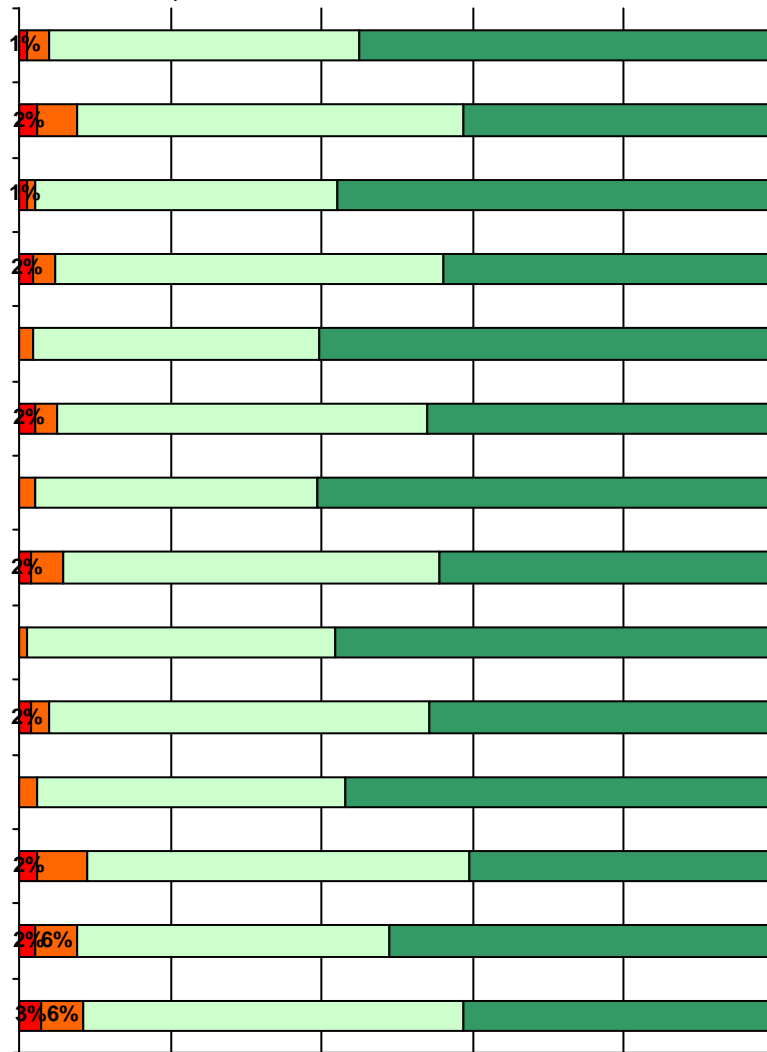




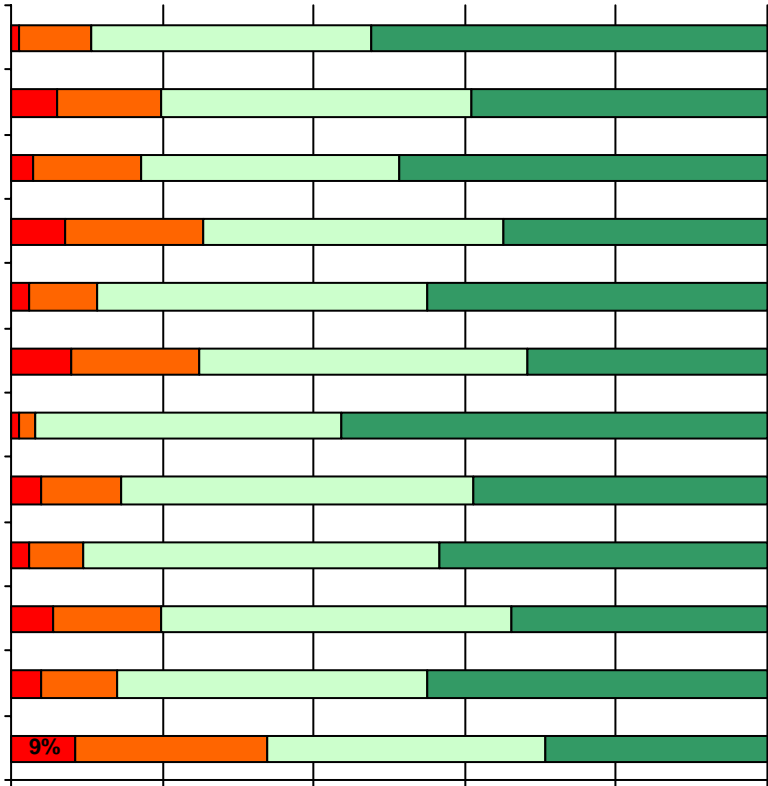
7. The following school staff treat my child fairly with respect to culture, gender, ethnicity, age, religion, and disability.



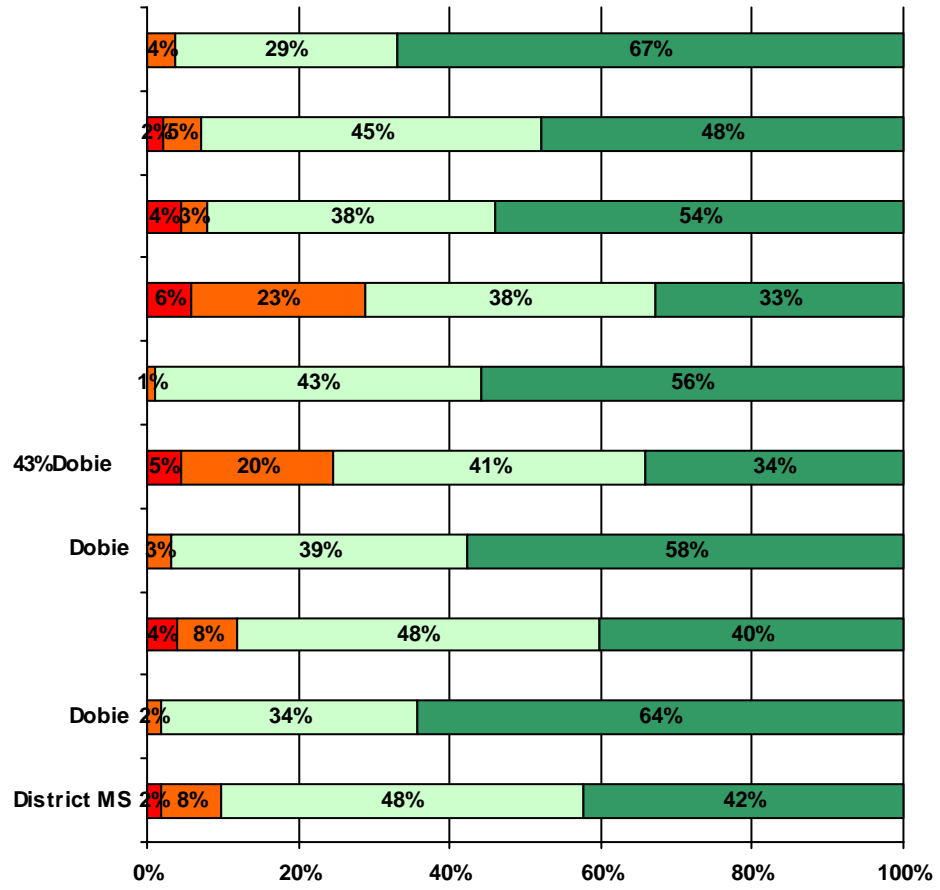
11. School staff provided me with information about the following school and district policies:



12. School staff provided me with information about the following programs:



13. School staff provided me with the following information about my child:









Number of Dobie Middle School Parent Responses, by Response Option (Continued)

		<b>Strongly Agree</b>	<b>Agree</b>	<b>Disagree</b>	<b>Strongly Disagree</b>	<b>Does Not Apply</b>	<b>Don't Know</b>
<b>11a.</b>	<b>n = 105</b>	54	40	3	1	2	5
<b>11b.</b>	<b>n = 98</b>	55	38	1	1	0	3
<b>11c.</b>	<b>n = 103</b>	61	38	2	0	0	2
<b>11d.</b>	<b>n = 103</b>	60	37	2	0	0	4
<b>11e.</b>	<b>n = 0</b>	0	0	0	0	0	0
<b>11f.</b>	<b>n = 0</b>	0	0	0	0	0	0
<b>11g.</b>	<b>n = 101</b>	56	39	1	0	1	4
<b>12a.</b>	<b>n = 101</b>	44	31	8	1	9	8
<b>12b.</b>	<b>n = 97</b>	34	24	10	2	15	12
<b>12c.</b>	<b>n = 93</b>	36	35	7	2	7	6
<b>12d.</b>	<b>n = 101</b>	54	39	2	1	1	4
<b>13a.</b>	<b>n = 108</b>	71	31	4	0	1	1
<b>13b.</b>	<b>n = 98</b>	48	34	3	4	1	8
<b>13c.</b>	<b>n = 101</b>	53	41	1	0	2	4
<b>13d.</b>	<b>n = 102</b>	53	36	3	0	5	5
<b>13e.</b>	<b>n = 103</b>	65	34	2	0	1	1

\*This item included an additional response option, 'I am not aware of AISD's academic benchmark testing.' An additional 6 parents selected this option.