



2006-2007 AISD Parent Survey Results

Dobie Middle School

The following report contains the results of the 2006-2007 AISD Parent Survey for your campus and all AISD schools at your level. The first section of this report provides a comparison of the campus demographics and the demographics reported by parents who responded to the survey from your campus. The next section describes the percentages of parents selecting specific responses for by some campuses than others.

How many parents responded to the survey in 2005-2006 and 2006-2007, and how does this compare to the number of students in the population each year?

	Campus	District EL	District MS	District HS
# of Parents Responding in 2005-2006	10	12,137	2,007	2,700
# of Students in 2005-2006	814	44,827	15,624	20,081
<i>Ratio of Parent Respondents to Students, 2005-2006</i>	1.2%	24.3%	11.5%	10.4%
# of Parents Responding in 2006-2007	76	11,812	1,354	1,426
# of Students in 2006-2007	865	45,431	15,790	20,279
<i>Ratio of Parent Respondents to Students, 2006-2007</i>	8.8%	26%	8.6%	7%

What did parents report as their child's ethnicity, and how does this compare to the ethnic distribution of the student population?

Ethnicity	% of Students, District	% of Students, Campus Population
Hispanic	13.6%	10.9%
African American	7.6%	9.5%
Other	75.8%	79.6%
Native American	0.0%	0.0%
White	3.0%	3.4%

What did parents report as their child's grade, and how does this compare to the grade level distribution of the student population?

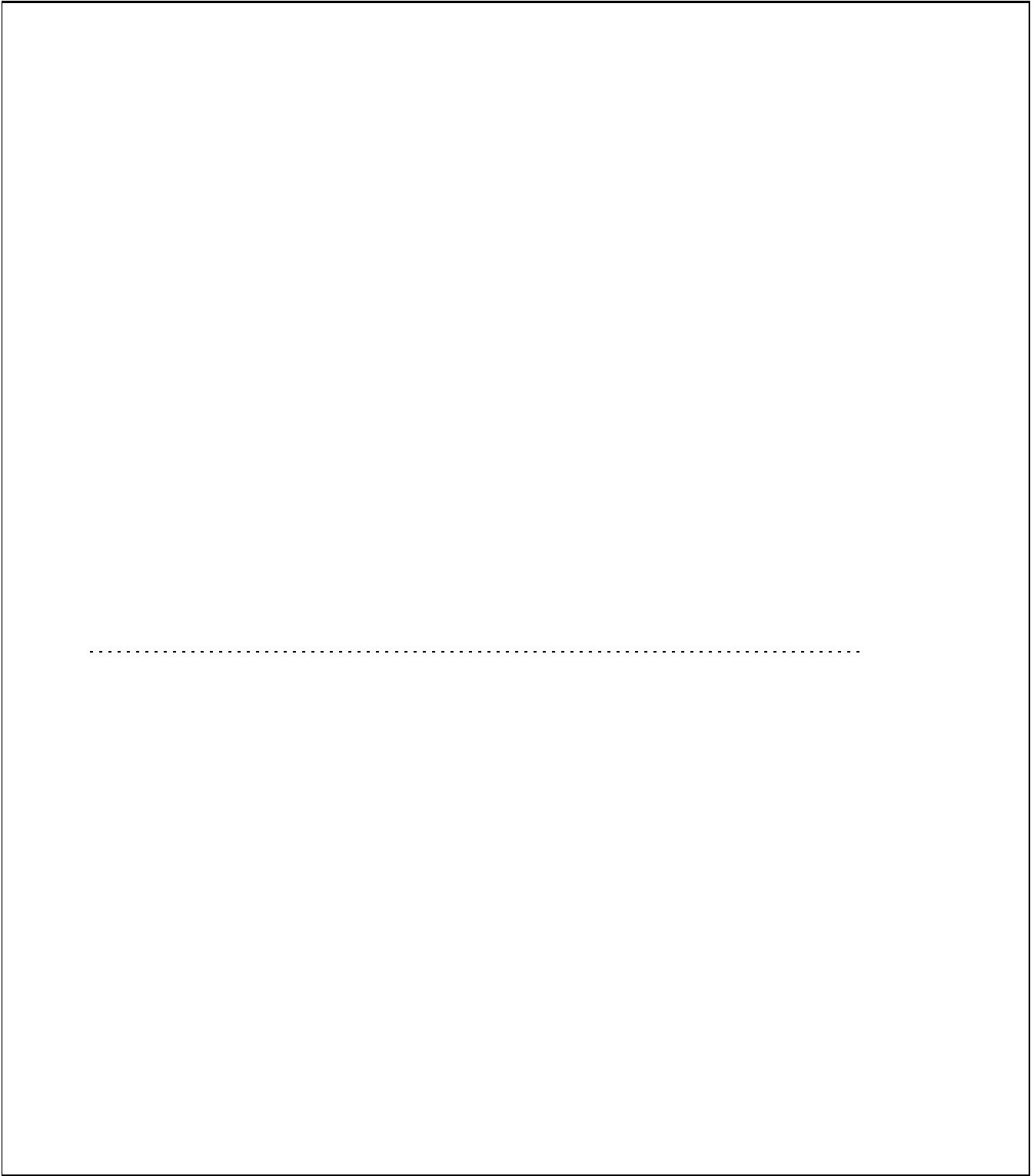
Grade	% of Students, as Reported by Campus Parent Respondents	% of Students in Campus Population
6th	43.7%	35.3%
7th	25.4%	29.8%
8th	31.0%	34.9%
9th	N/A	N/A
10th	N/A	N/A
11th	N/A	N/A
12th	N/A	N/A

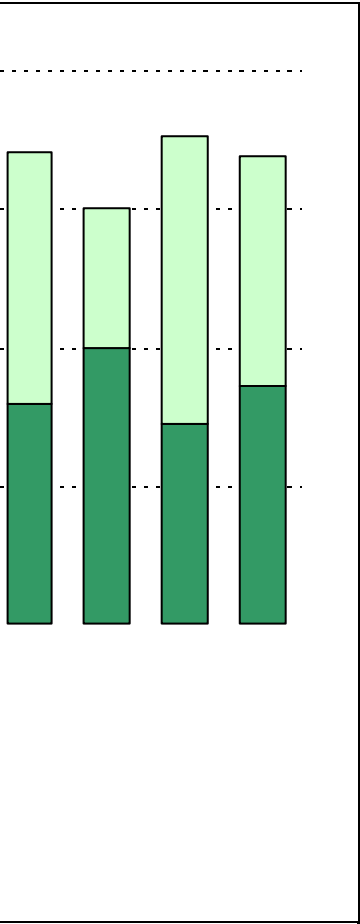
Note: Student population data are based on Fall PEIMS data submitted by the district to TEA, and may differ from the official AEIS report.

USING THE RESULTS OF THE AISD PARENT SURVEY

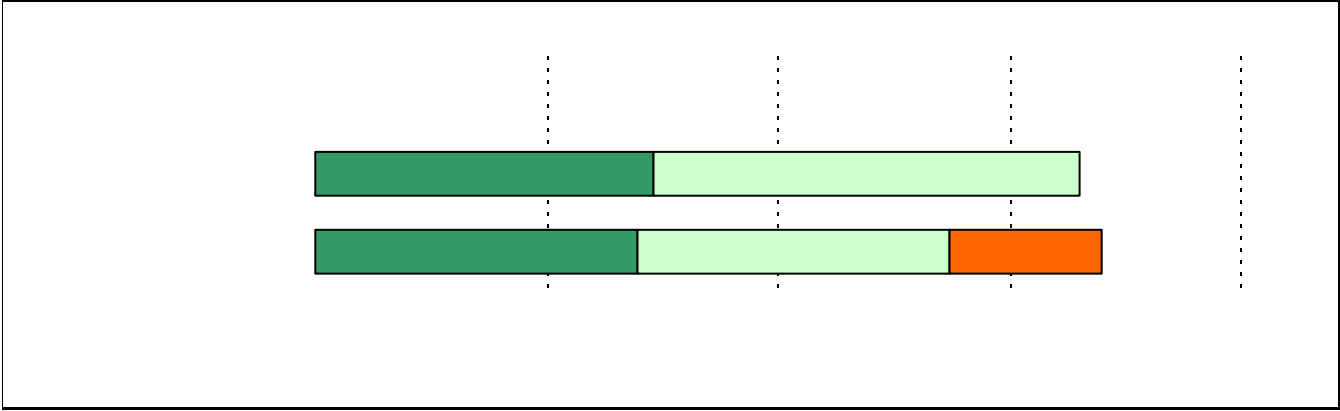
Each survey item is presented below, followed by a bar graph containing your school's results for two years and this year's results for all campuses at your level. You will be able to identify areas in which your school's results have changed over time, and you will be able to compare the responses of your school's parents to those of parents at your level district-wide.

Please examine your results to determine areas of strength and opportunities for improvement. Areas of strength can be identified by large percentages of parents who "Strongly Agree" or "Agree" with a statement. Opportunities for improvement can be identified by large percentages of parents who "Disagree" or "Strongly Disagree" with a statement. In addition, please look for

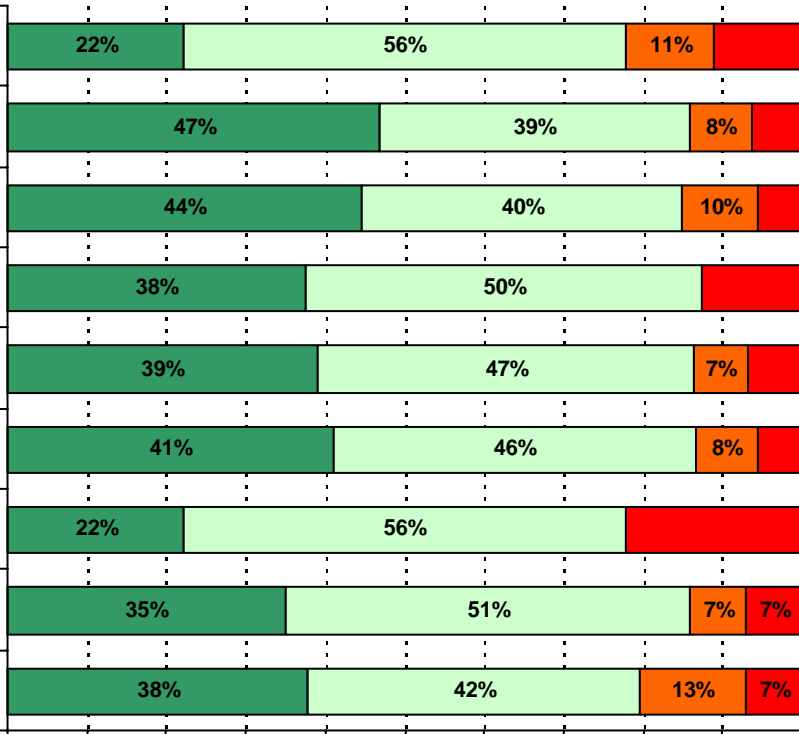


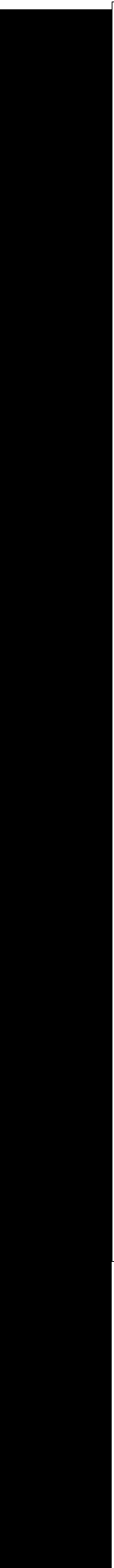


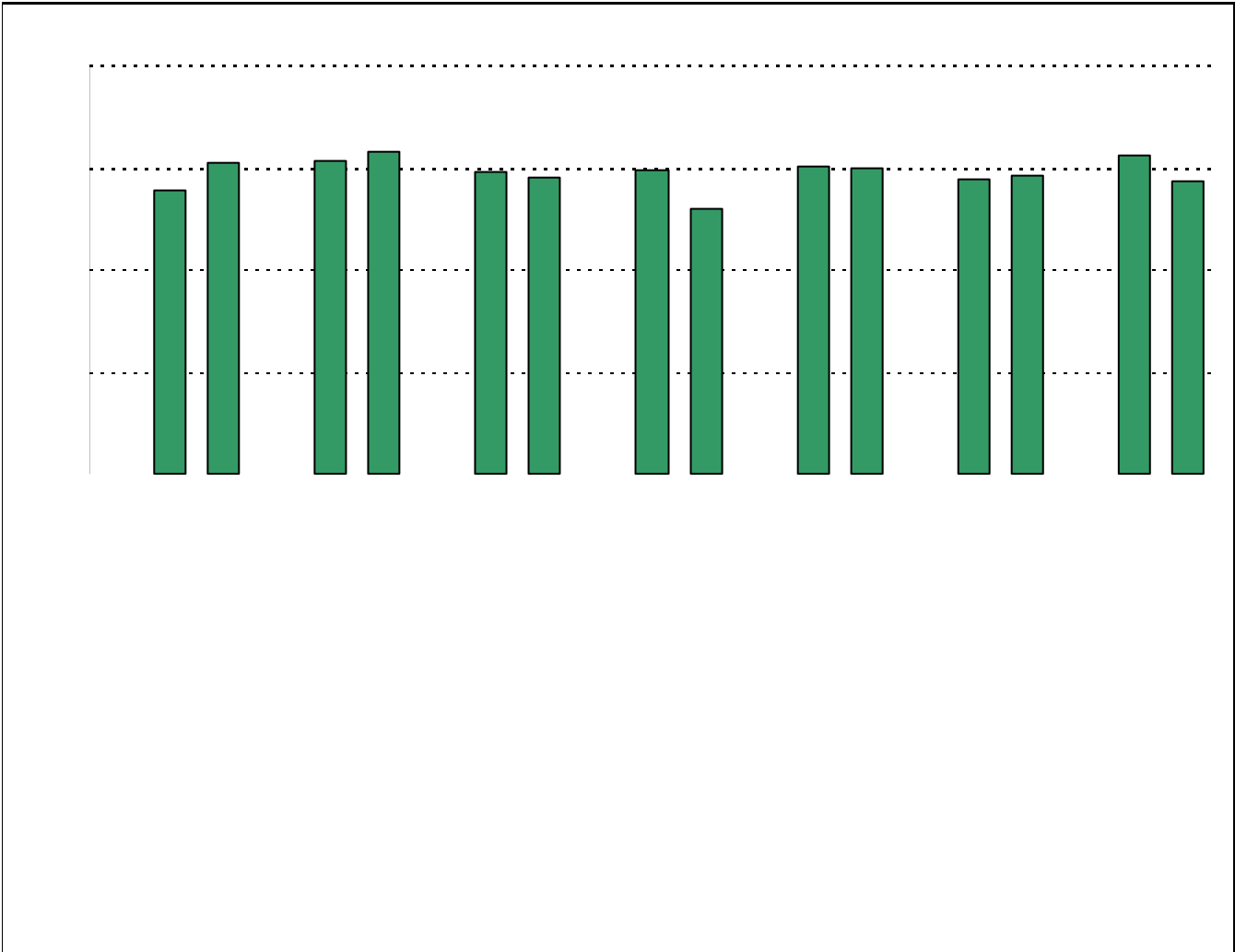
A rectangular box with a solid black border, containing four horizontal dashed lines. The lines are evenly spaced and extend across most of the width of the box, providing a template for writing.



14. School staff provide me with enough information about the following programs:

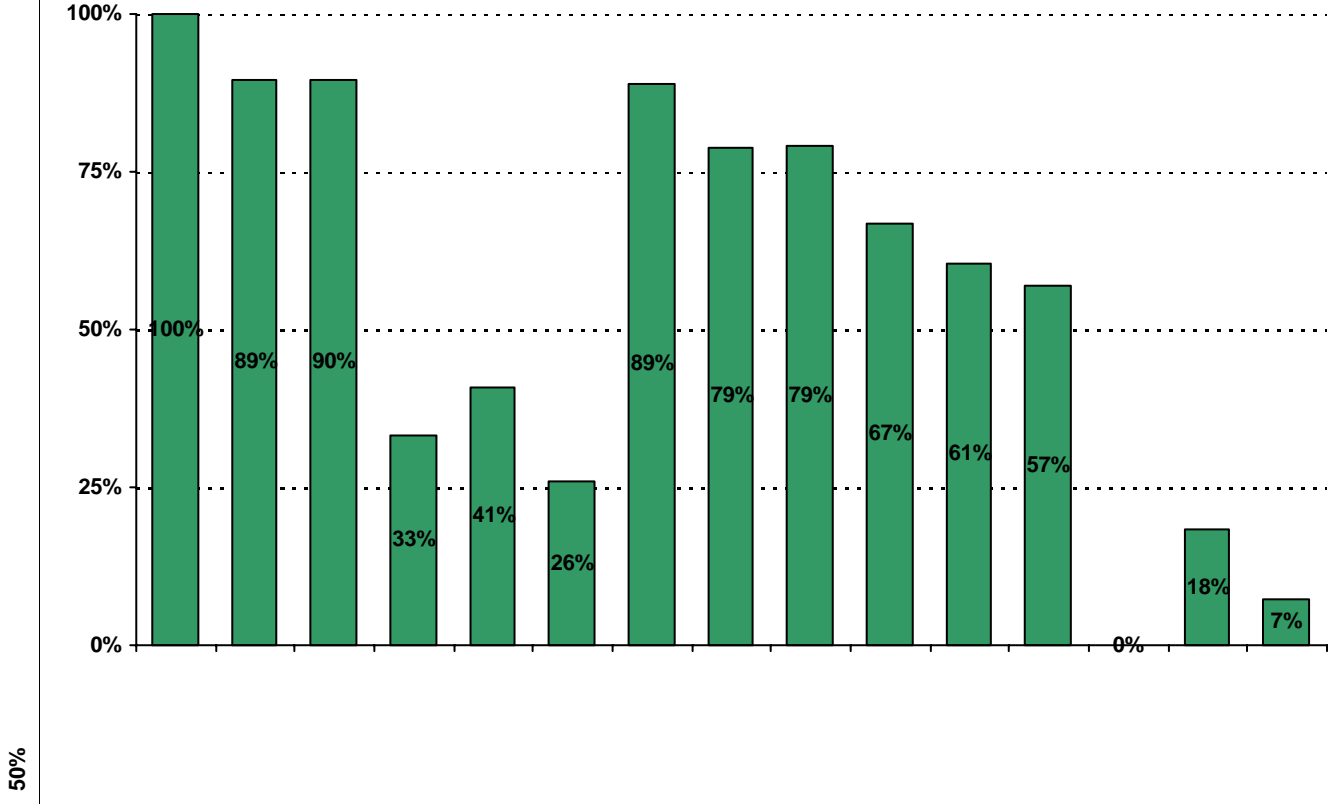






* Item(s) #17, #18, #19 added to the survey in 2006

20. My goals for my child include the following plans:



Item Response Details

Number of Dobie Middle School Parent Responses, by Response Option

		Strongly Agree	Agree	Disagree	Strongly Disagree	Don't Know/NA
4.	n = 56		3	53		
5a.	n = 70	30	28	0	3	9
5b.	n = 70	33	25	0	3	9
5c.	n = 69	29	24	0	4	12
5d.	n = 71	36	27	0	4	4
5e.	n = 70	38	27	0	3	2
6a.	n = 69	21	30	3	4	11
6b.	n = 69	24	30	2	4	9
6c.	n = 68	22	31	1	5	9
6d.	n = 71	32	29	2	4	4
6e.	n = 70	30	28	4	4	4
7a.	n = 70	22	27	5	4	12
7b.	n = 70	24	24	4	4	14
7c.	n = 70	23	25	4	4	14
7d.	n = 71	27	25	4	3	12
7e.	n = 72	33	28	3	4	4
8a.	n = 70	21	24	3	3	19
8b.	n = 69	20	25	3	3	18
8c.	n = 69	22	23	4	4	16
8d.	n = 69	23	28	3	2	13
8e.	n = 71	29	28	3	4	7
9a.	n = 70	31	22	2	6	9
9b.	n = 69	32	22	2	4	9
9c.	n = 68	30	23	2	4	9
9d.	n = 67	32	25	1	3	6
9e.	n = 70	37	25	2	4	2
9f.	n = 67	32	27	2	3	3
10.	n = 73	19	24	5	4	21
11.	n = 71	29	29	5	3	5
12.	n = 72	22	34	7	4	5

