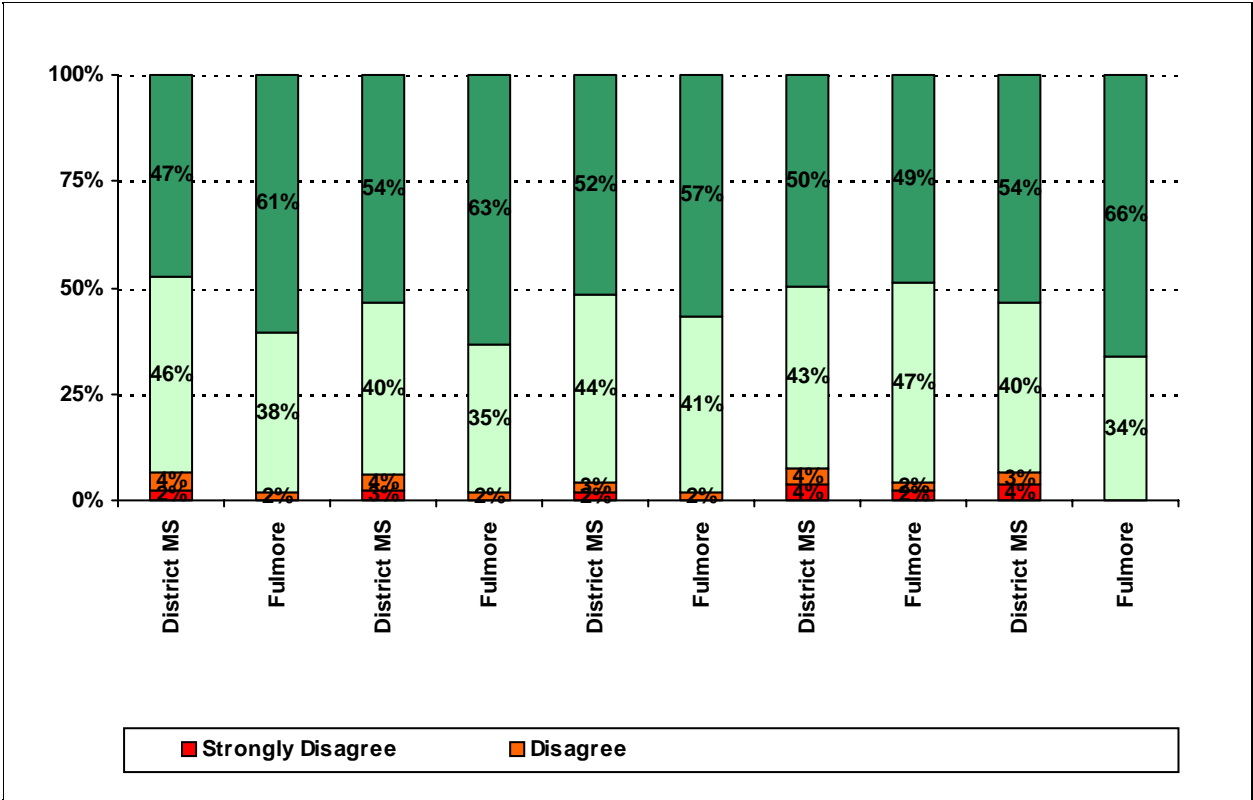


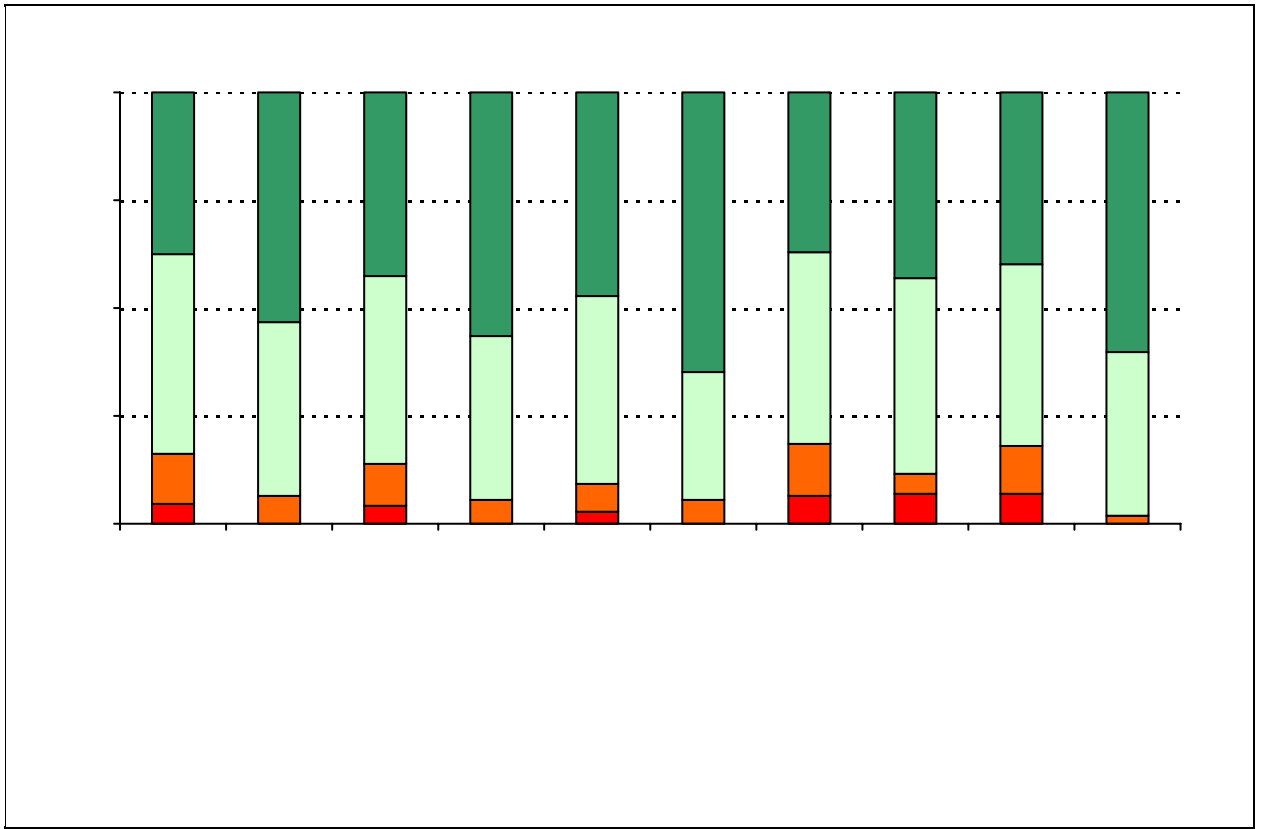
	Campus	District EL	District MS	District HS
# of Parents Responding in 2003-2004		16,070	2,721	1,640
# of Students in 2003-2004		42,594	15,819	19,847
<i>Ratio of Parent Respondents to Students, 2003-04</i>		37.7 %	17.2 %	8.3 %
# of Parents Responding in 2004-2005		12,137	2,007	2,700
# of Students in 2004-2005		43,566	15,705	
<i>Ratio of Parent Respondents to Students in 2004-05</i>		27.9 %	12.8 %	

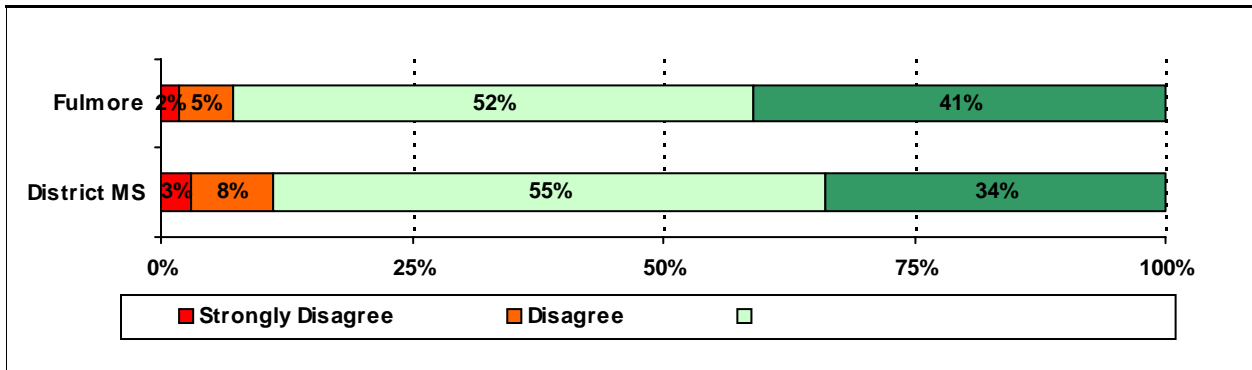
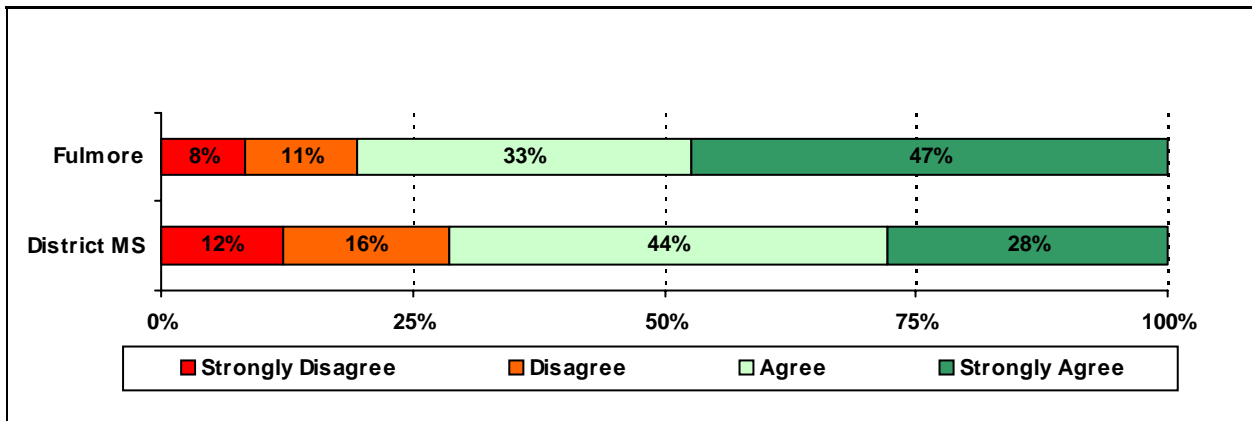
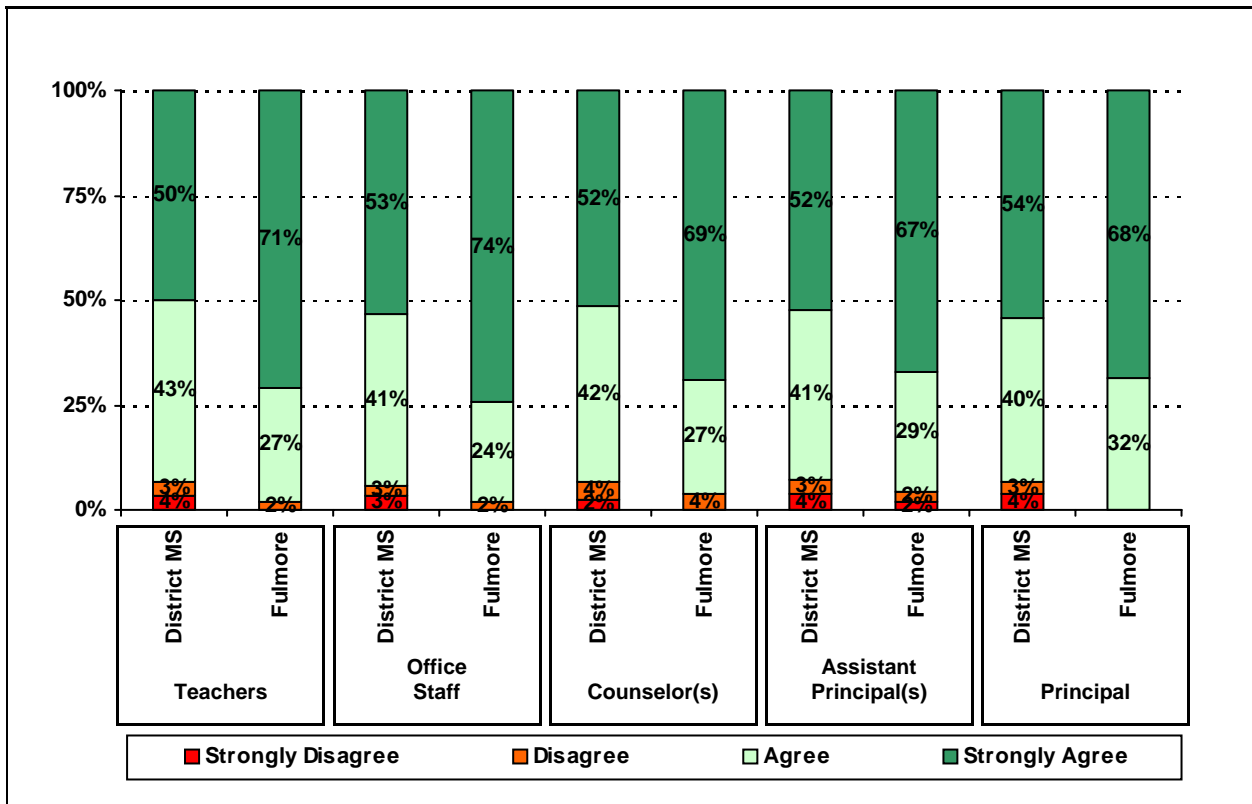
Each survey item is presented below, followed by a bar graph containing results for your campus and for all campuses at your level.

Please examine the results below to determine areas of strength and opportunities for improvement. Large percentages of "Strongly Agree" and "Agree" indicate areas in which your campus staff excel, and large percentages of "Disagree" and "Strongly Disagree" indicate areas for possible improvement.

In addition, please compare the percentage of parents from your campus selecting each response option with the percentage of all AISD parents selecting each response option.







:

