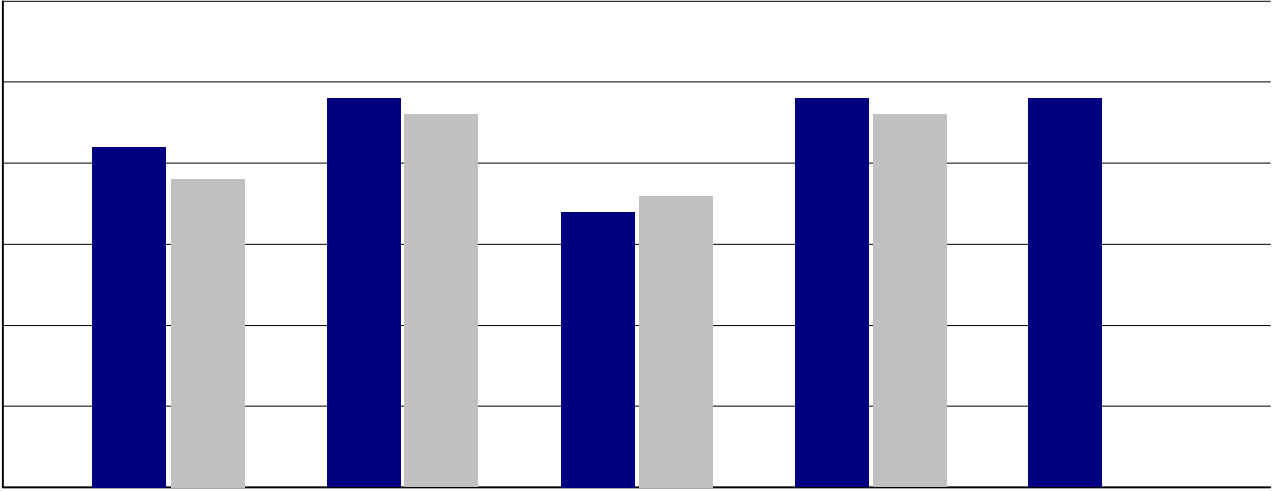


Table 1. Number of respondents for:



Behavioral environment	Gorzycki			All
	2009-2010	2010-2011	2011-2012	Middle Schools 2011-2012

Note. *Control* never always
never always

Adult fairness and respect	Gorzycki			All
	2009-2010	2010-2011	2011-2012	Middle Schools 2011-2012

Note. never always

Student engagement	2009-2010	Gorzycki		All Middle Schools 2011-2012
		2010-2011	2011-2012	

--	--	--	--	--

Note. *never* *always*

Academic self-confidence	2009-2010	Gorzycki		All Middle Schools 2011-2012
		2010-2011	2011-2012	

--	--	--	--	--

Note. *never* *always*

Teacher expectations	2010-2011	Gorzycki		All Middle Schools 2011-2012
		2011-2012		

--	--	--	--	--

Note. *Challenge*
never *always*

37. I will go to college after high school.	2009-2010	Gorzycki		All Middle Schools 2011-2012
		2010-2011	2011-2012	

--	--	--	--	--