



2004-2005 AISD Parent Survey Results

Graham Elementary School

The following report contains the results of the 2004-2005 AISD Parent Survey for your campus and all AISD schools acampo5selected each response option. Campus survey results should be examined for areas and opportunities for improvement. Results for all AISD schools at your level are presented to provide a reference for comparison.

How many parents responded to the survey in 2003-2004 and 2004-2005, and how does this compare to the number of students in the population each year?

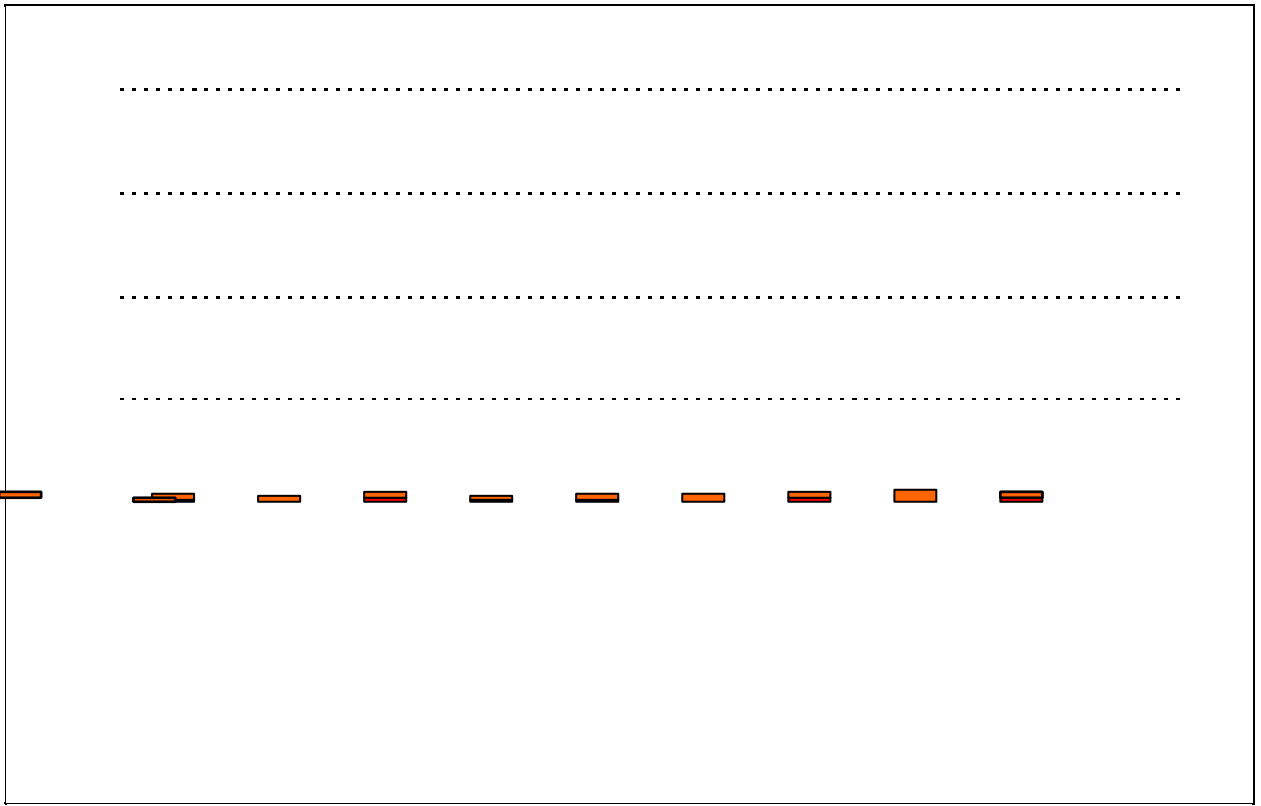
	Campus	District EL	District MS	District HS
# of Parents Responding in 2003-2004	312	16,070	2,721	1,640
# of Students in 2003-2004	631	42,594	15,819	19,847
<i>Ratio of Parent Respondents to Students, 2003-04</i>	49.4%	37.7 %	17.2 %	8.3 %
# of Parents Responding in 2004-2005	249	12,137	2,007	2,700
# of Students in 2004-2005	708	43,566	15,705	19,976
<i>Ratio of Parent Respondents to Students in 2004-05</i>	35.2%	27.9 %	12.8 %	13.5 %

Note: The ratio of parent respondents to students is listed above as a percentage for ease of interpretation; however, it is the number of parents who responded per 100 students enrolled.

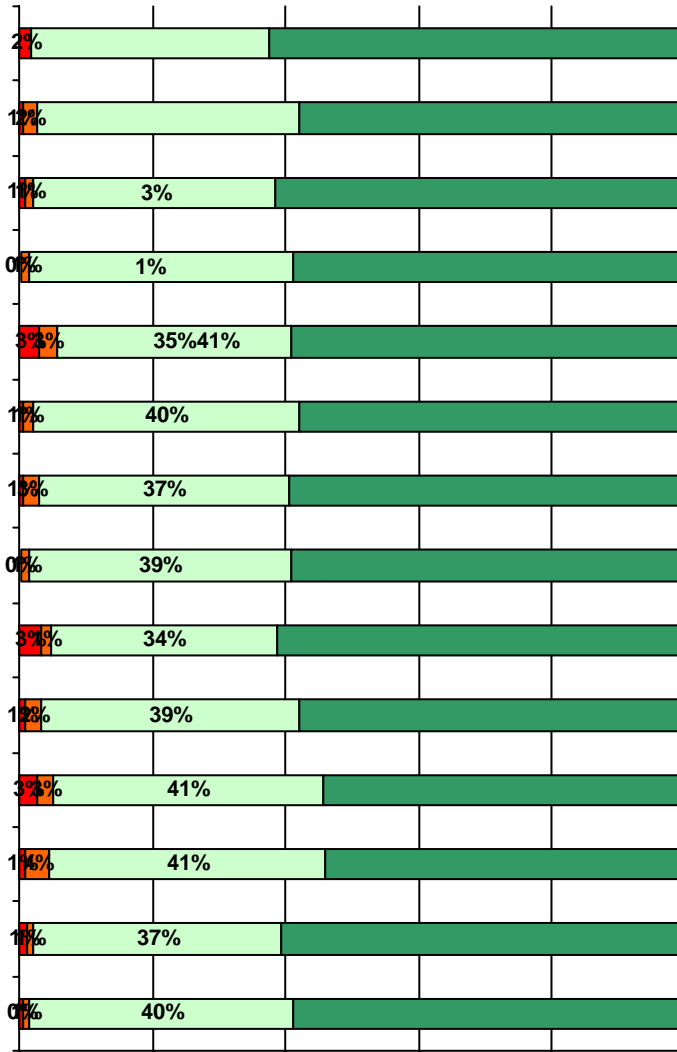
What did parents report as their child's ethnicity, and how does this compare to the ethnic distribution of the student population?

Ethnicity	% of Students, as Reported by Parent Respondents	% of Students in Campus Population
African American	16.1%	24.9%
Asian	2.0%	0.4%
Hispanic	71.7%	66.9%
Native American	3.9%	0.0%
White	6.3%	7.8%

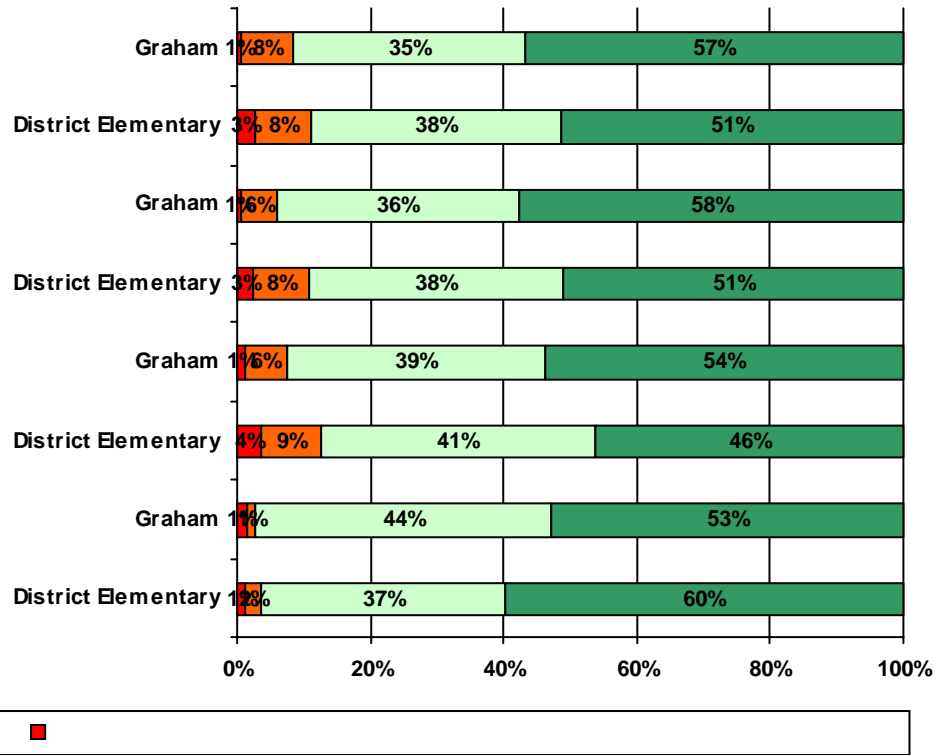


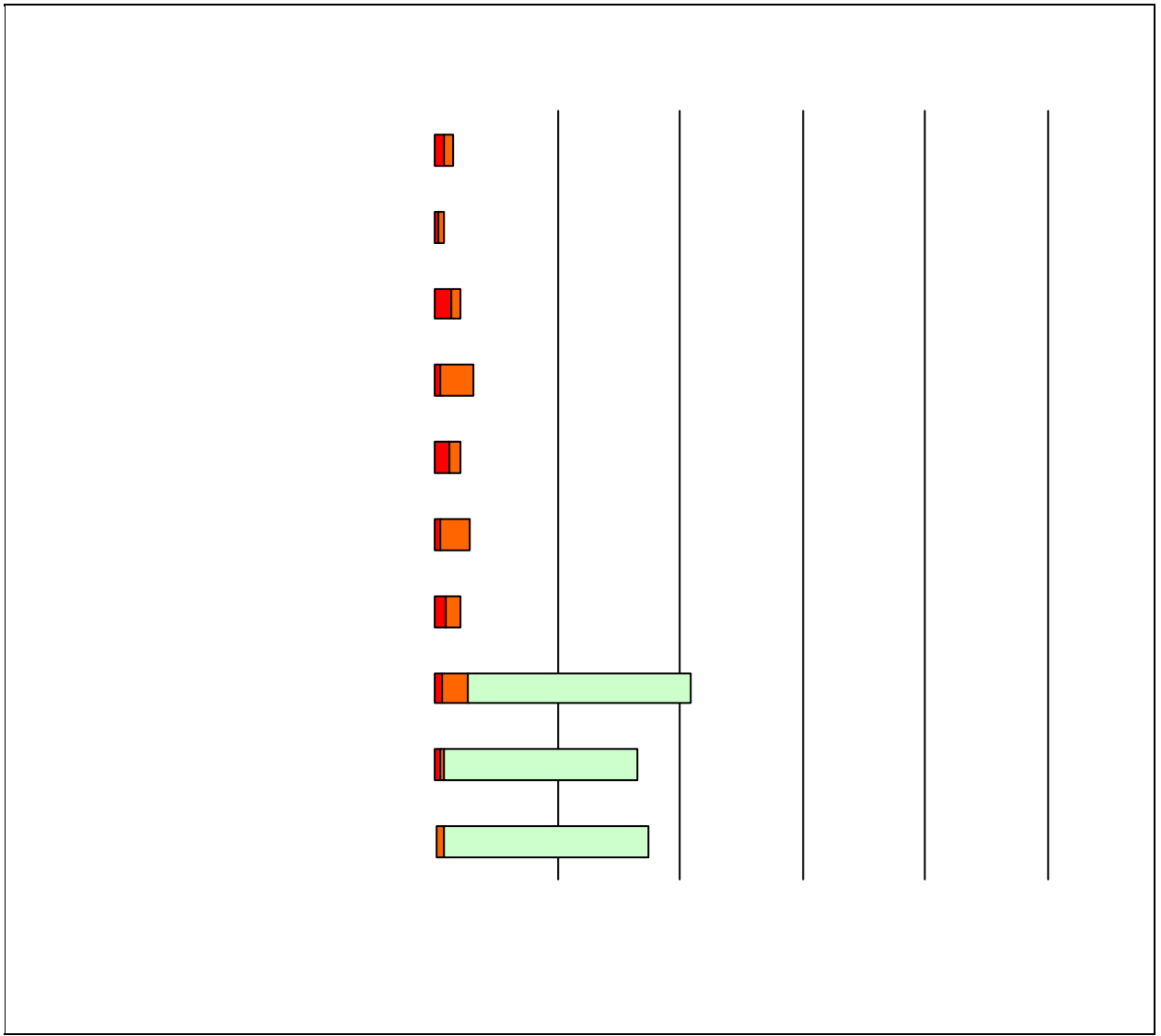


11. School staff provided me with information about the following school and district policies:

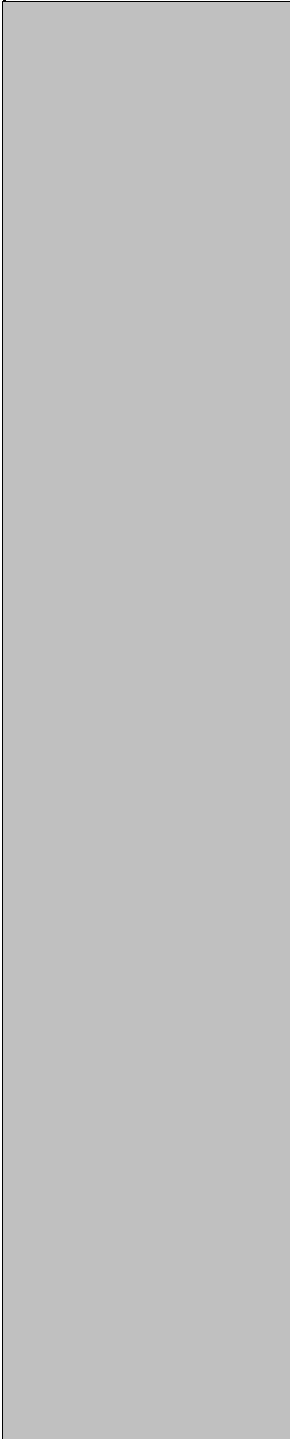


12. School staff provided me with information about the following programs:





	Strongly Agree	Agree	Disagree	Strongly Disagree	Does Not
--	-----------------------	--------------	-----------------	--------------------------	-----------------



101

Number of Graham Elementary School Parent Responses, by Response Option (Continued)

		Strongly Agree	Agree	Disagree	Strongly Disagree	Does Not Apply	Don't Know
11a.	n = 198	108	62	0	3	11	14
11b.	n = 201	118	70	2	2	6	3
11c.	n = 208	117	70	5	6	6	4
11d.	n = 202	115	72	5	1	6	3
11e.	n = 189	89	49	2	5	23	21
11f.	n = 181	83	62	4	4	10	18
11g.	n = 198	112	69	2	2	6	7
12a.	n = 203	87	53	12	1	27	23
12b.	n = 209	94	59	9	1	29	17
12c.	n = 201	93	67	11	2	10	18
12d.	n = 203	38	32	1	1	5	12
13a.	n = 214	141	53	3	3	8	6
13b.	n = 205	117	66	3	5	6	8
13c.	n = 199	99	56	3	4	18	19
13d.	n = 200	99	56	4	3	24	14
13e.	n = 213	135	64	1	2	6	5

*This item included an additional response option, 'I am not aware of AISD's academic benchmark testing.' An additional 33 parents selected this option.