



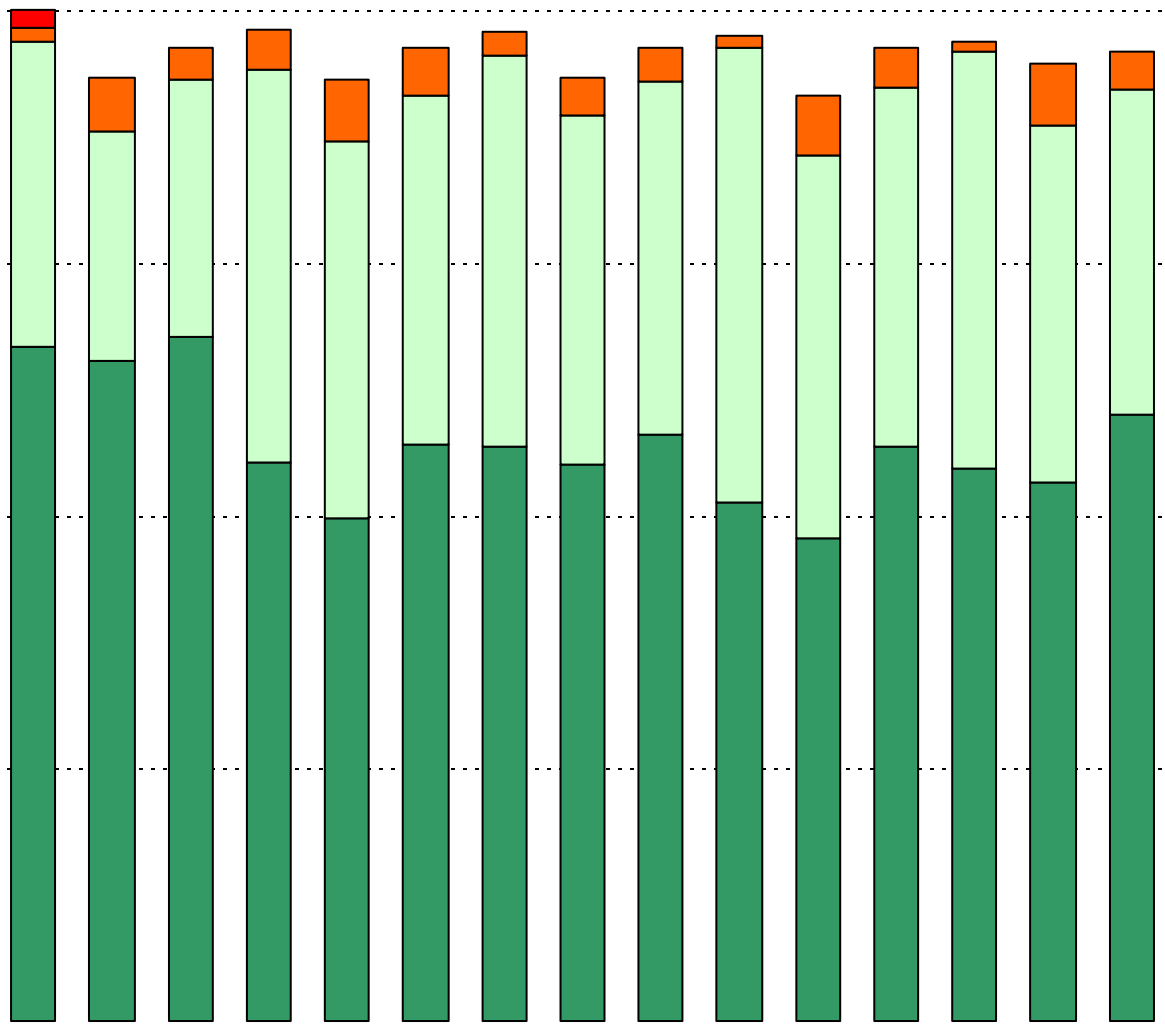
**How many parents responded to the survey in 2005-2006 and 2006-2007, and how does this compare to the number of students in the population each year?**

	Campus	District EL	District MS	District HS
	<i>34.3%</i>			
	<i>41%</i>			

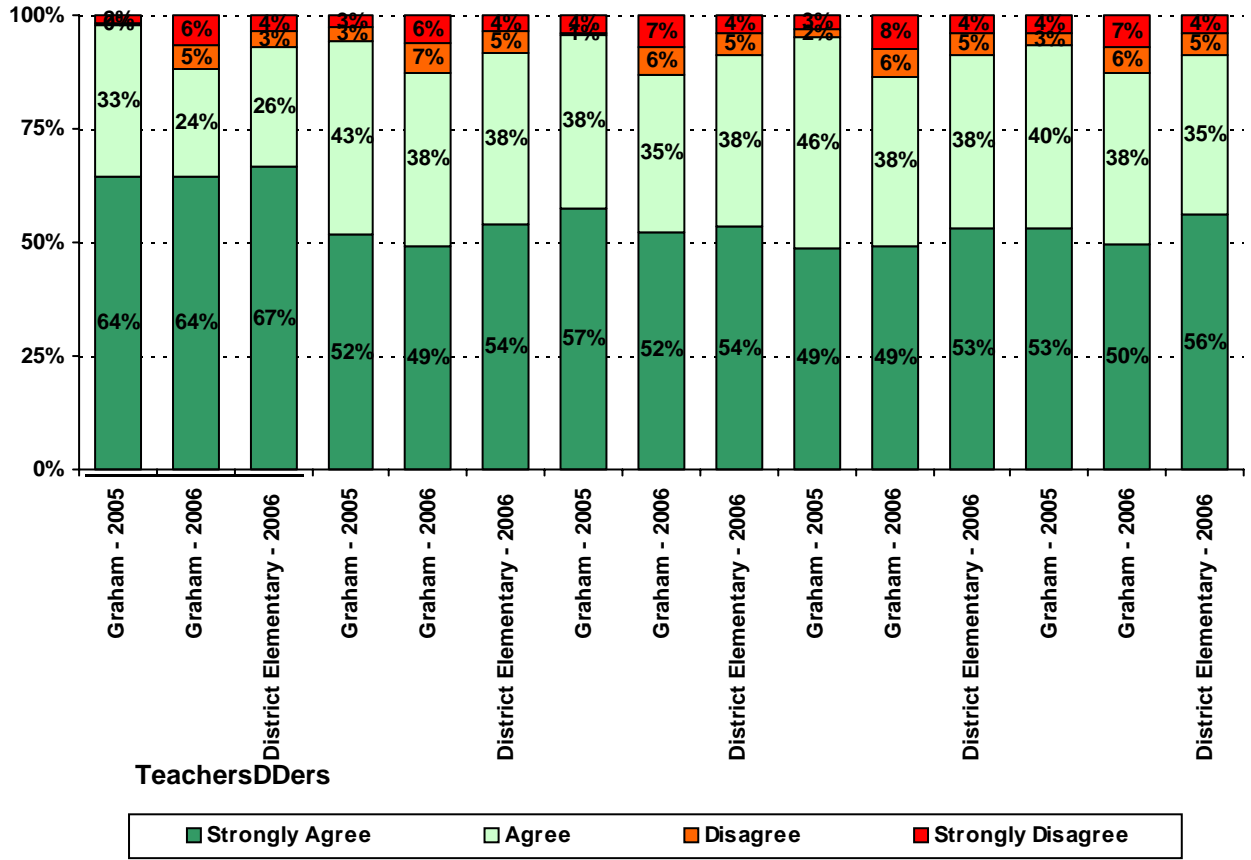
**What did parents report as their child's ethnicity, and how does this compare to the ethnic distribution of the student population?**

Ethnicity	% of Students, as Reported by Campus Parent Respondents	% of Students in Campus Population
Asian		
Hispanic		
Native American		
White		

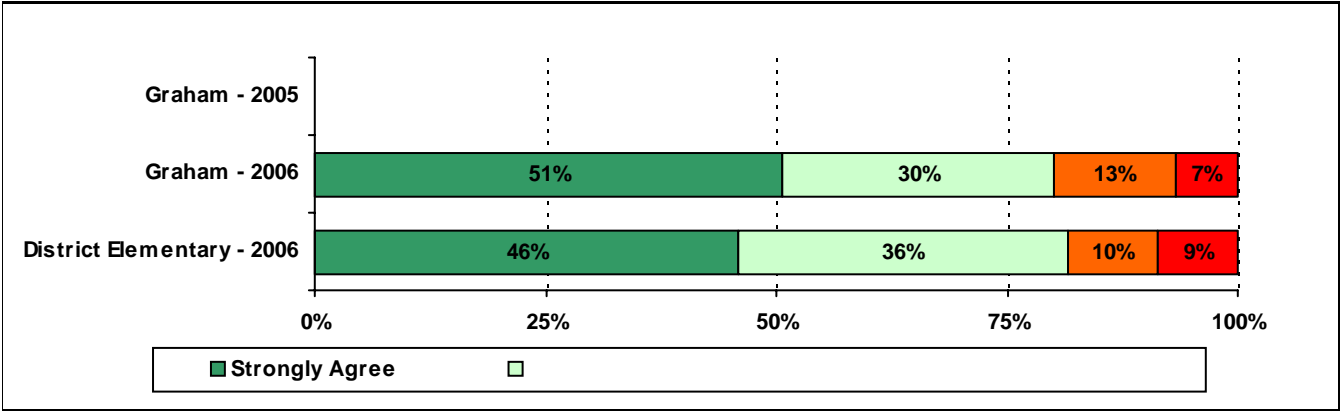
**USING THE RESULTS OF THE**

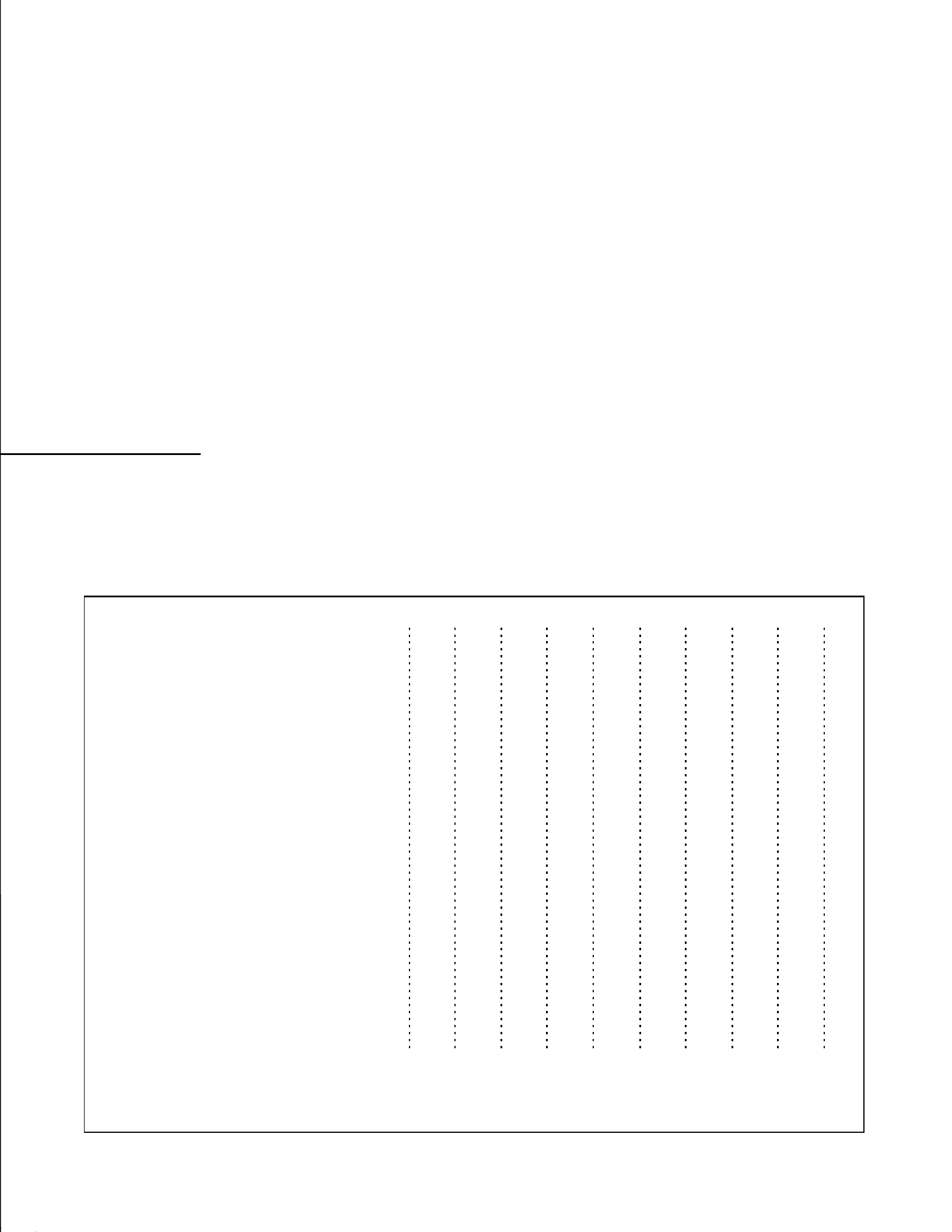


6. The following school staff provide me with opportunities for two-way communication.



A rectangular box containing three horizontal dotted lines, likely a template for handwriting practice. The box is positioned in the lower half of the page, and the dotted lines are spaced evenly within it. The bottom of the page is partially obscured by a black shadow.

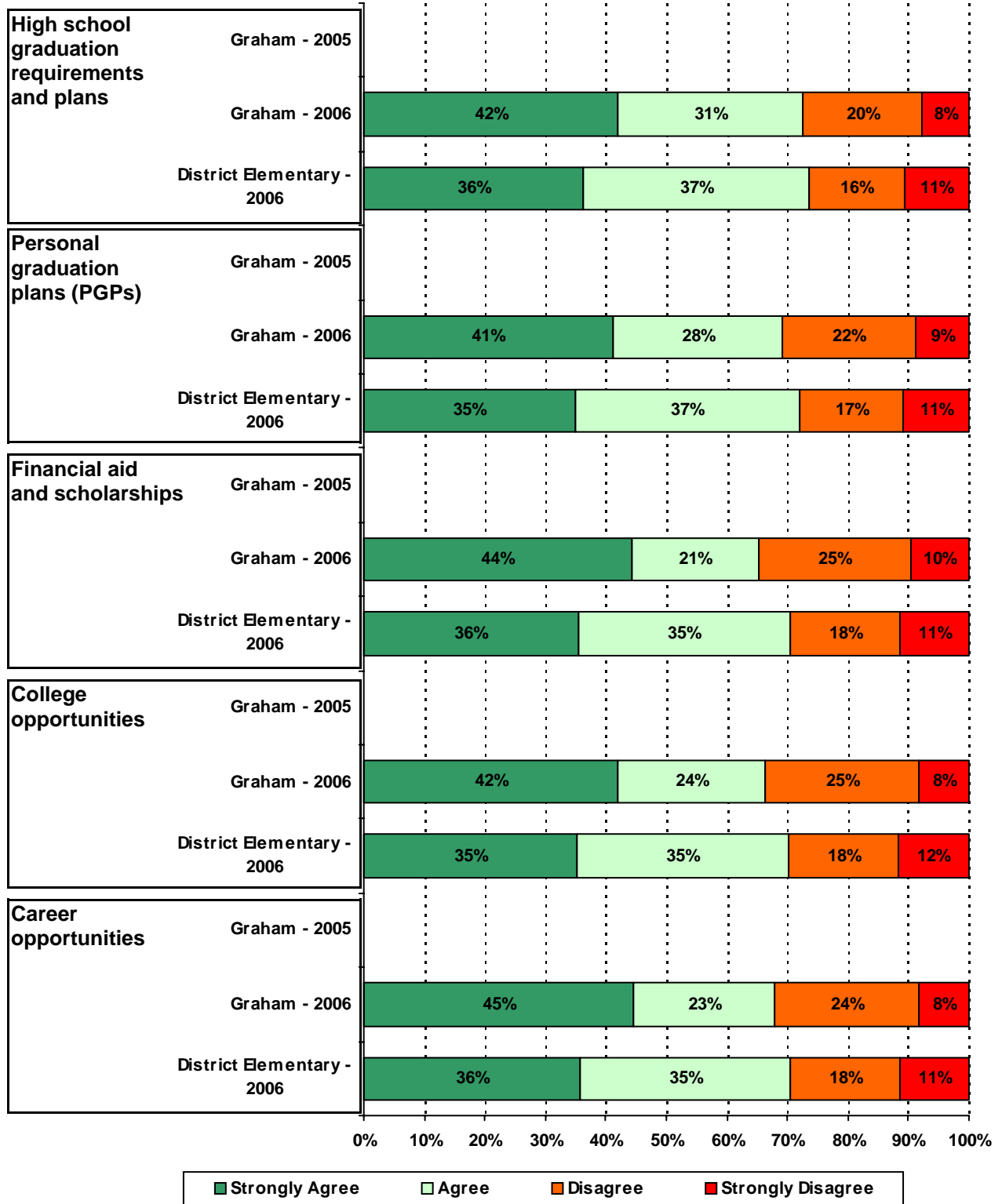




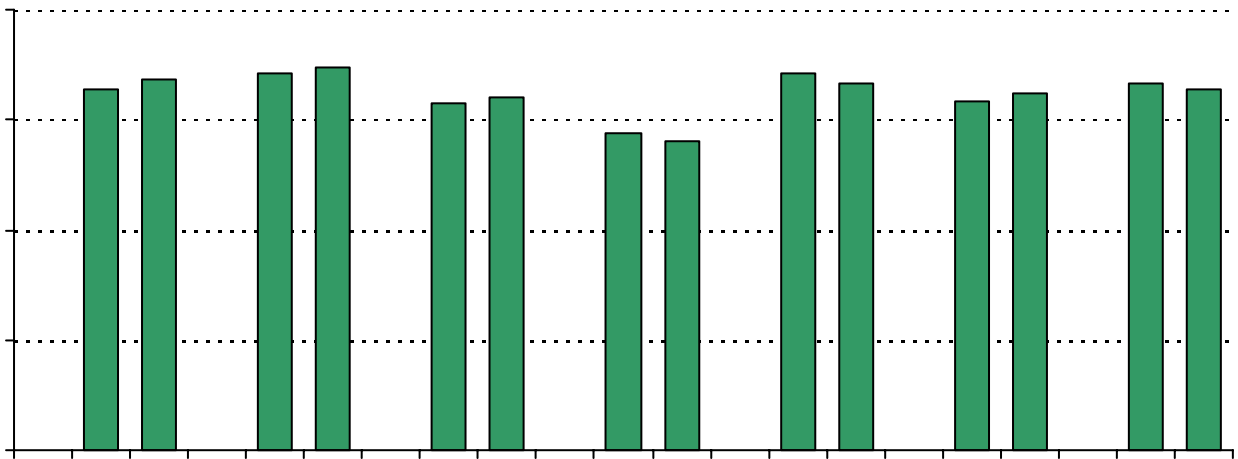
**Required  
curriculum**



16. School staff provide me with useful information about the following graduation and post-graduation topic



19. Which of the following activities do you participate in at your child's school:\*



\* Item(s) #17, #18, #19 added to the survey in 2006



## Item Response Details

		Strongly Agree	Agree	Disagree	Strongly Disagree	Don't Know/NA
4.	n = 212					
5a.	n = 256					
5b.	n = 242					
5c.	n = 235					
5d.	n = 241					
5e.	n = 258					
6a.	n = 242					
6b.	n = 223					
6c.	n = 229					
6d.	n = 231					
6e.	n = 257					
7a.	n = 231					
7b.	n = 226					
7c.	n = 232					
7d.	n = 218					
7e.	n = 247					
8a.	n = 231					
8b.	n = 226					
8c.	n = 224					
8d.	n = 227					
8e.	n = 256					
9a.	n = 237					
9b.	n = 232					
9c.	n = 234					
9d.	n = 230					
9e.	n = 248					
9f.	n = 233					
10.	n = 265					
11.	n = 260					
12.	n = 254					

		Strongly Agree	Disagree	Strongly Disagree
13a.	n = 258			
13b.	n = 257			
13c.	n = 233			
14a.	n = 265			
14b.	n = 267			
14c.	n = 256			
15a.	n = 273			
15b.	n = 265			
15c.	n = 259			
	n = 251			
	n = 268			