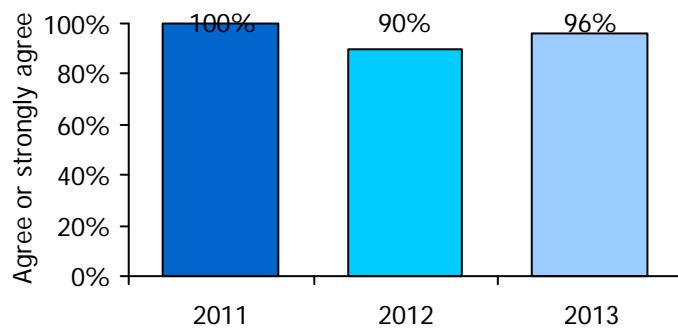
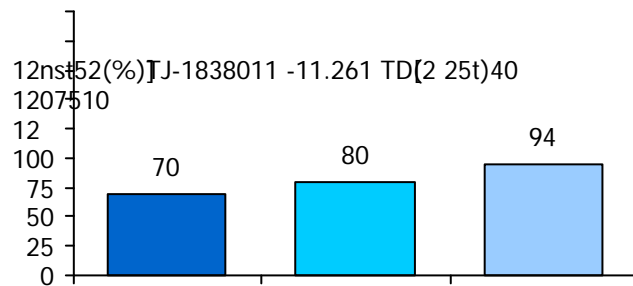
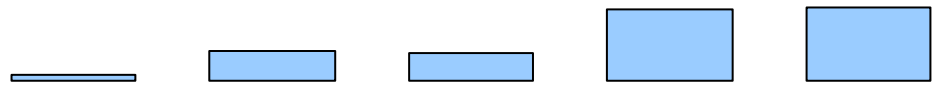


TELL AISD Staff Working Conditions Survey: Results for 2011-2013

Houston Elementary School

To do their jobs well, educators need supportive school environments where they are valued, are trusted, and can collaborate to improve instruction. The Teaching, Empowering, Leading and Learning (TELL) AISD Survey is a unique opportunity to gather information about school conditions from those whose views matter most—practicing educators. Respondents are asked for their perceptions on a variety of issues related to student achievement and staff retention, including Overall Climate, Use of Time, Leadership, Facilities and Resources, Student Behavior Management, Community Support, Professional Development, Instructional Practice, and Achievement Press. Participant counts are displayed in Figure 1.





The school leadership makes a sustained effort to address teacher concerns about:

	2011	Houston		ALL EL
		2012	2013	2013
The use of time in my school	80%	85%	84%	80%
Facilities and resources	81%	89%	90%	91%
Community support and involvement	87%	85%	88%	90%
Managing student conduct	77%	68%	75%	82%
Teacher leadership	91%	84%	89%	89%
School leadership	95%	82%	88%	88%
Professional development	98%	91%	91%	90%
Instructional practices and support	97%	93%	91%	90%
New teacher support	80%	86%	88%	86%
Achievement Press	*	87%	96%	91%

Teacher Leadership

	2011	Houston		ALL EL
		2012	2013	2013
Teachers are recognized as educational experts.	80%	86%	76%	85%
Teachers are trusted to make sound professional decisions about instruction.	83%	79%	76%	85%
Teachers are relied upon to make decisions about educational issues.	79%	82%	73%	86%
Teachers are encouraged to participate in school leadership roles.	91%	86%	84%	90%
The faculty has an effective process for making group decisions to solve problems.	82%	83%	70%	78%
In this school we take steps to solve problems.	91%	80%	79%	85%
Teachers are effective leaders in this school.	87%	86%	90%	90%
Teachers have an appropriate level of influence on decision making in this school.	*	73%	70%	78%

Professional Development

	2011	Houston 2012	2013	ALL EL 2013
Sufficient resources are available for professional development.	85%	76%	78%	85%
An appropriate amount of time is provided for professional development.	75%	77%	78%	77%
Professional development offerings are data driven.	84%	92%	84%	89%
Professional learning opportunities are aligned with the school's improvement plan.	91%	98%	96%	92%
Professional development is differentiated to meet the needs of individual teachers.	61%	75%	69%	72%
Professional development deepens teachers' content knowledge.	77%	89%	85%	85%
Teachers are encouraged to reflect on their own practice.	89%	85%	82%	92%
Follow up is provided from professional development in this school.	77%	67%	72%	75%
Professional development provides ongoing opportunities for teachers to work with colleagues to refine teaching practices.	82%	89%	82%	81%
Professional development is evaluated and results are communicated to teachers.	57%	65%	65%	68%
Professional development enhances teachers' abilities to implement instructional strategies that meet diverse student learning needs.	89%	88%	90%	89%
Professional development enhances teachers' abilities to improve student learning.	94%	89%	90%	91%

Campus and District Professional Development

	2013	
	At my campus	In the district
PD is differentiated to meet the needs of individual teachers.	68%	68%
PD deepens teachers' content knowledge.	88%	73%
PD enhances teachers' abilities to implement instructional strategies that meet diverse student learning needs.	87%	74%
PD enhances teachers' abilities to improve student learning.	90%	82%

Note. These items were new in 2013.

Community Support and Engagement

	2011	Houston 2012	2013	ALL EL 2013
			45%	
			73%	
			84%	
			86%	
Teachers provide parents/guardians with useful information about student learning.	95%		91%	
			80%	
Parents/guardians support teachers, contributing to their success with students.	69%		67%	
Community members support teachers, contributing to their success with students.	70%		76%	
The community we serve is supportive of this school.	78%		79%	

	2011	2012	2013	ALL EL 2013
		82%	86%	
		60%	73%	
		77%	80%	
		71%	74%	
		75%	79%	
		89%	86%	
		86%	87%	
		85%	81%	

Achievement Press

	2011	Houston 2012	2013	ALL EL 2013
The school sets high standards for academic performance.	98%	95%		
Teachers in this school believe that their students have the ability to achieve academically.	96%			
Parents exert pressure to maintain high standards.	44%			
Achievement is recognized and acknowledged by the school.	100%			
Parents press for school improvement.	46%			
Students in this school can achieve the goals that have been set for them.	96%			
Students respect others who get good grades.	90%			
Students seek extra work so they can get get good grades.	42%			
Students try hard to improve on previous work.	76%			
The learning environment is orderly and serious.+	77%			