



## 2004-2005 AISD Parent Survey Results

### Harris Elementary School

The following report contains the results of the 2004-2005 AISD Parent Survey for your campus and all AISD schools at your level. The first section of this report provides a comparison of the campus demographics and the demographics reported by parents who responded to the survey from your campus. The next section describes the percentage of parents selecting specific responses for each survey item, and the final section indicates the actual number of parents who selected each response option. Campus survey results should be examined for areas of strength and opportunities for improvement. Results for all AISD schools at your level are presented to provide a reference for comparison.

#### How many parents responded to the survey in 2003-2004 and 2004-2005, and how does this compare to the number of students in the population each year?

	Campus	District EL	District MS	District HS
<b># of Parents Responding in 2003-2004</b>	328	16,070	2,721	1,640
<b># of Students in 2003-2004</b>	585	42,594	15,819	19,847
<i>Ratio of Parent Respondents to Students, 2003-04</i>	<b>56.1%</b>	<b>37.7 %</b>	<b>17.2 %</b>	<b>8.3 %</b>
<b># of Parents Responding in 2004-2005</b>	225	12,137	2,007	2,700
<b># of Students in 2004-2005</b>	592	43,566	15,705	19,976
<i>Ratio of Parent Respondents to Students in 2004-05</i>	<b>38%</b>	<b>27.9 %</b>	<b>12.8 %</b>	<b>13.5 %</b>

Note: The ratio of parent respondents to students is listed above as a percentage for ease of interpretation; however, it is the number of parents who responded per 100 students enrolled.

#### What did parents report as their child's ethnicity, and how does this compare to the ethnic distribution of the student population?

Ethnicity	% of Students, as Reported by Parent Respondents	% of Students in Campus Population
<b>African American</b>	6.6%	19.8%
<b>Asian</b>	2.0%	0.8%
<b>Hispanic</b>	83.8%	76.2%
<b>Native American</b>	5.6%	0.7%
<b>White</b>	2.0%	2.5%

**What did parents report as their child's grade, and how does this compare to the grade level distribution of the student population?**

<b>Grade</b>	<b>% of Students, as Reported by Parent Respondents</b>	<b>% of Students in Campus Population</b>
<b>EC</b>	0%	0.8%
<b>PK</b>	10.1%	18.2%
<b>K</b>	10.1%	14.0%
<b>1st</b>	12.0%	17.6%
<b>2nd</b>	17.8%	14.2%
<b>3rd</b>	18.3%	13.0%
<b>4th</b>	25.0%	12.3%
<b>5th</b>	6.7%	9.8%
<b>6th</b>	N/A	N/A

Note: Student population data are based on Fall 2003 and Fall 2004 PEIMS data submitted by the district to TEA, and may differ from the official AEIS report.

### 2004-2005 AISD Parent Survey Item Responses

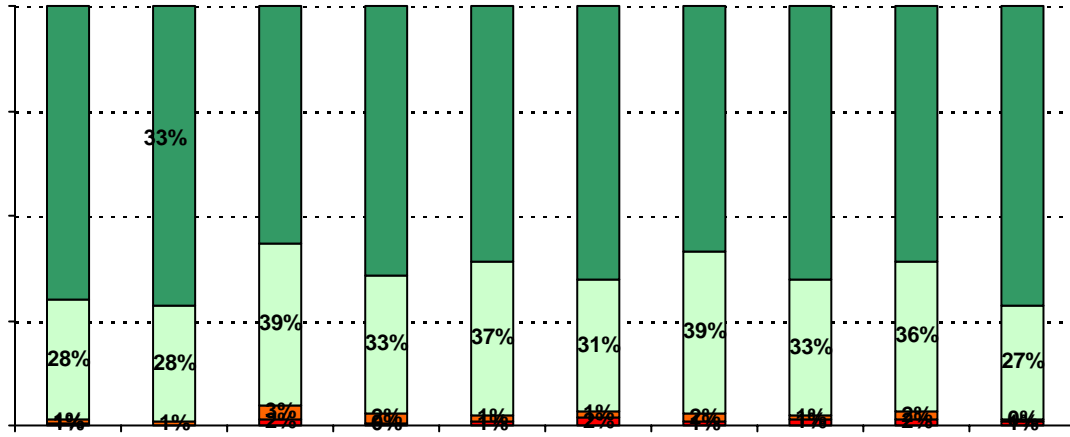
Each survey item is presented below, followed by a bar graph containing results for your campus and for all campuses at your level.

Please examine the results below to determine areas of strength and opportunities for improvement. Large percentages of "Strongly Agree" and "Agree" indicate areas in which your campus staff excel, and large percentages of "Disagree" and "Strongly Disagree" indicate areas for possible improvement.

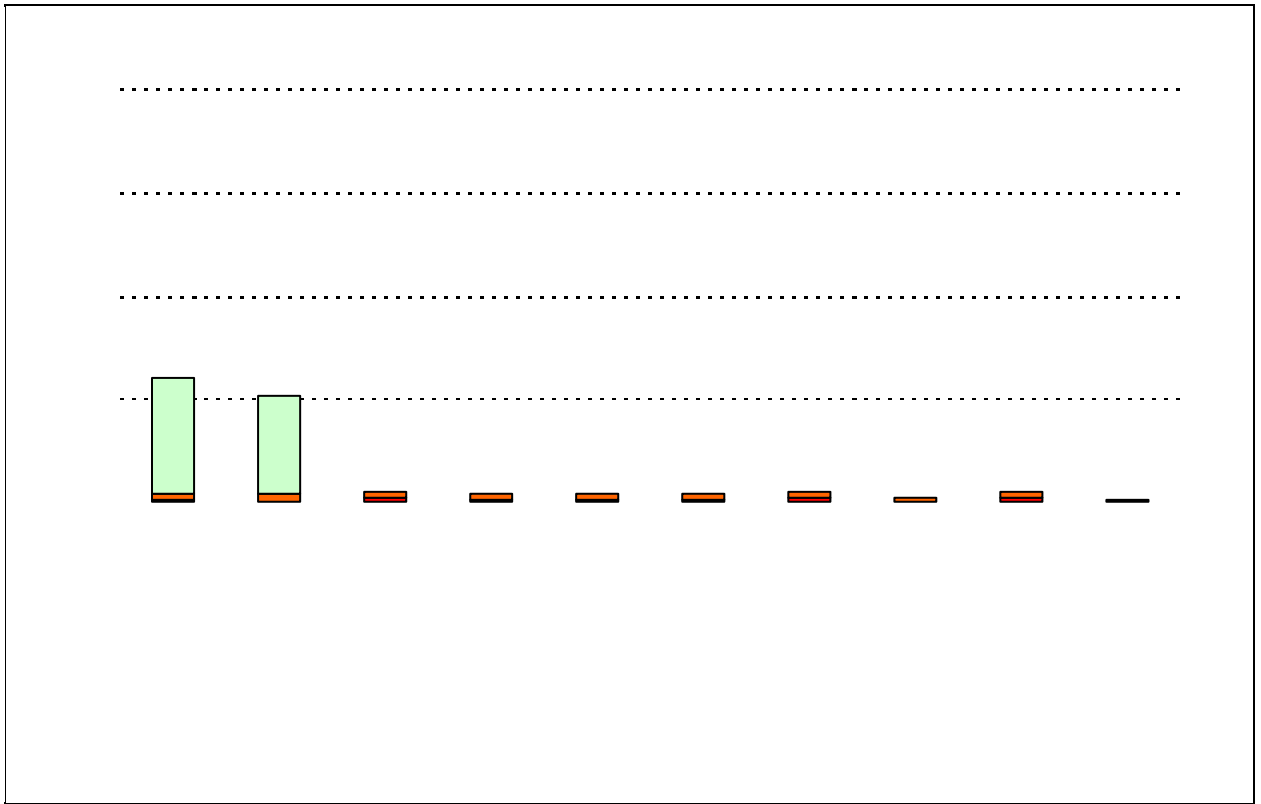
In addition, please compare the percentage of parents from your campus selecting each response option with the percentage of all AISD parents selecting each response option. If your campus percentages are very different from the percentages reported districtwide, please consider potential reasons for discrepancies.

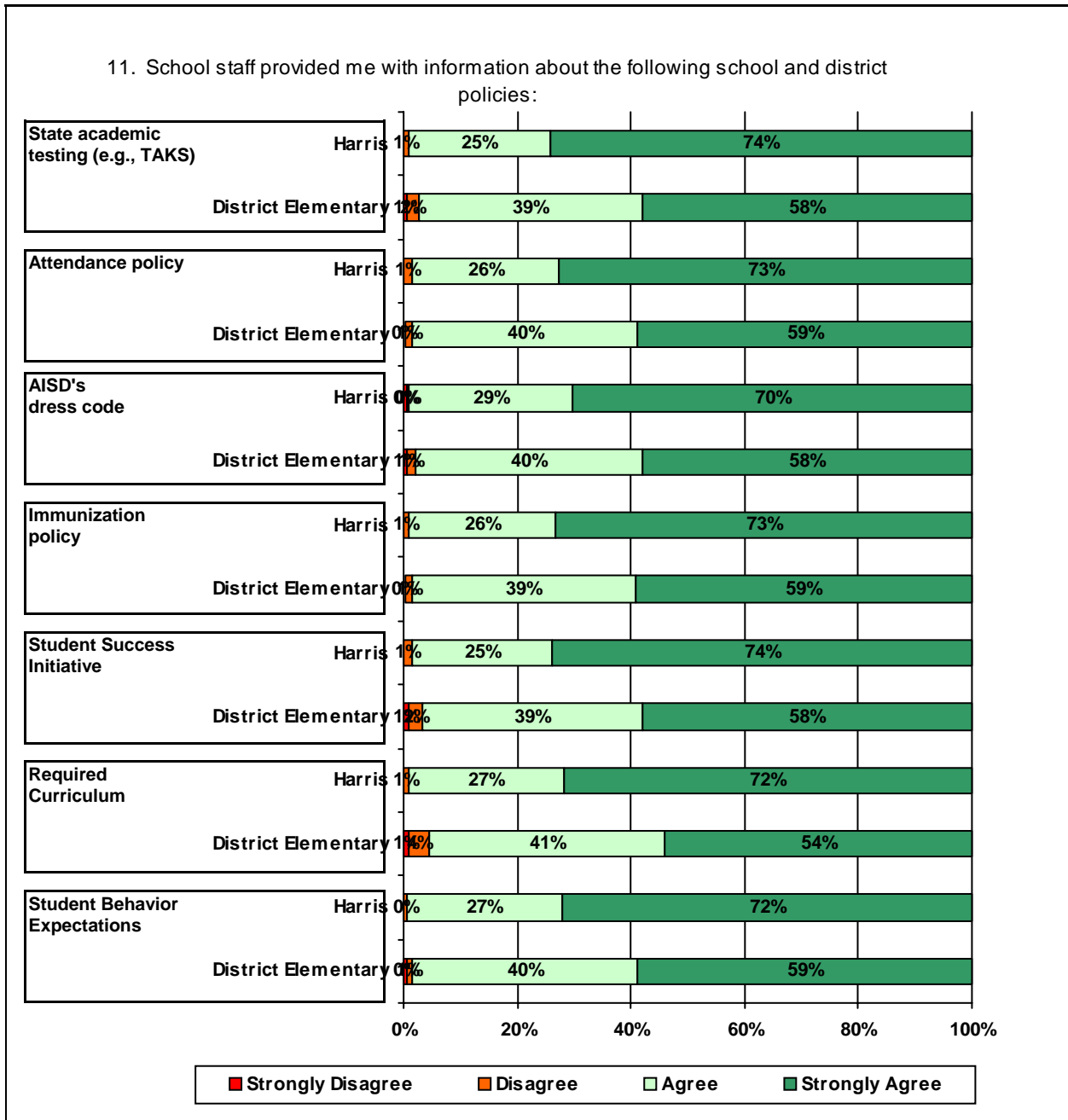
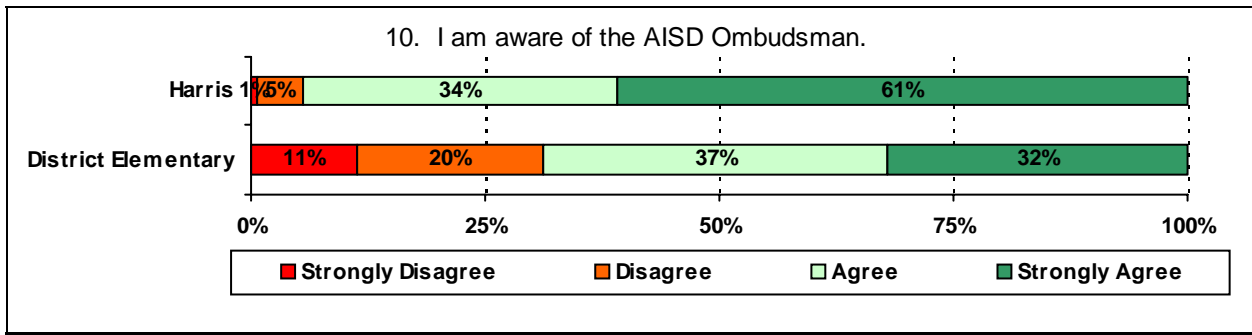
Please also review the results below for staff categories with consistently positive or negative responses. These responses may be used to identify opportunities for praise and areas for professional development.

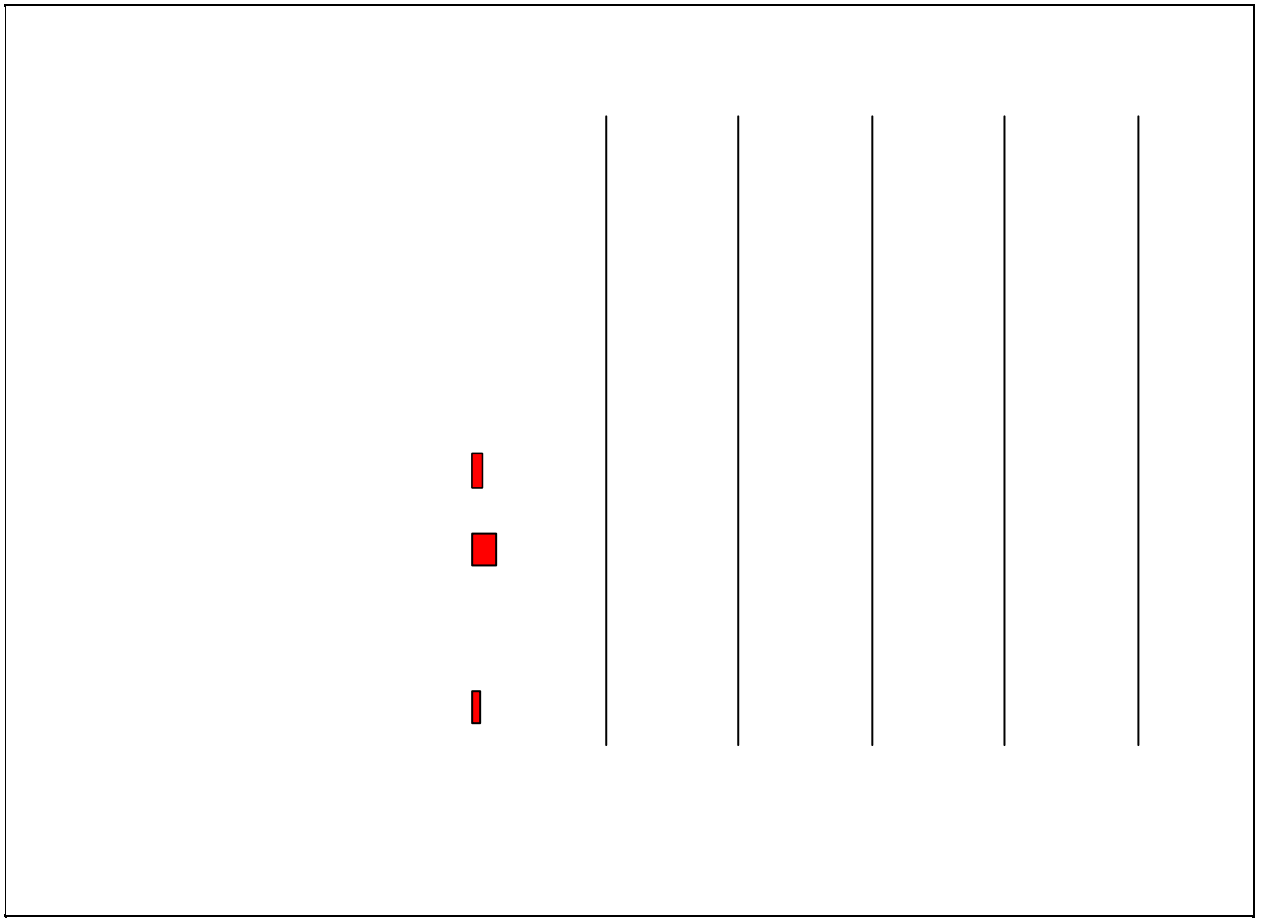
3. The following school staff treat me with courtesy and respect.

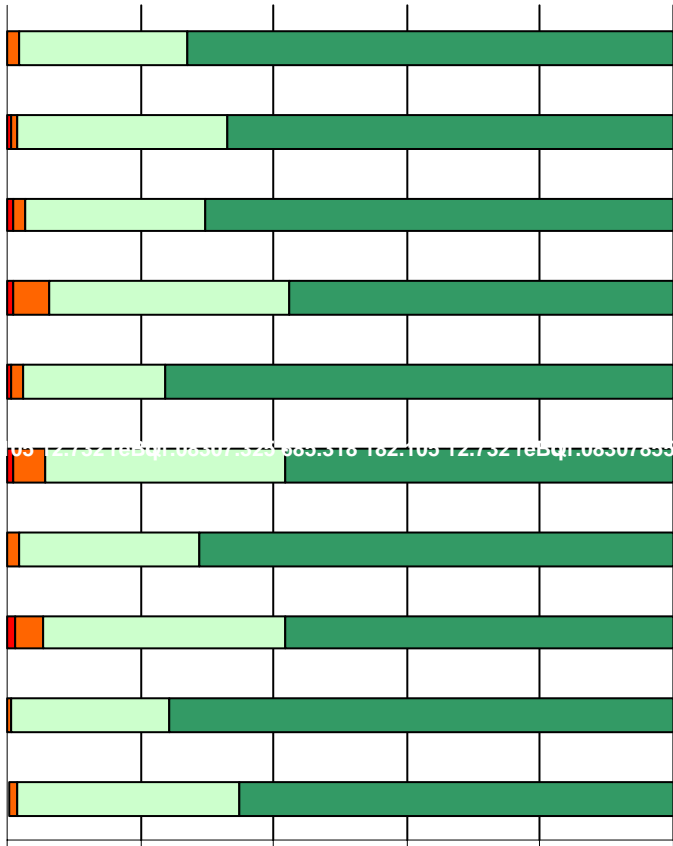














## Item Response Details

Number of Harris Elementary School Parent Responses, by Response Option

		Strongly Agree	Agree	Disagree	Strongly Disagree	Does Not Apply	Don't Know
<b>3a.</b>	<b>n = 223</b>	154	59	1	2	2	5
<b>3b.</b>	<b>n = 223</b>	138	69	2	3	2	9
<b>3c.</b>	<b>n = 224</b>	132	63	3	4	4	18
<b>3d.</b>	<b>n = 223</b>	139	71	5	1	3	4
<b>3e.</b>	<b>n = 224</b>	157	61	2	0	0	4
<b>4a.</b>	<b>n = 223</b>	138	61	5	1	3	15
<b>4b.</b>	<b>n = 220</b>	131	69	4	2	3	11
<b>4c.</b>	<b>n = 220</b>	127	64	4	3	6	16
<b>4d.</b>	<b>n = 222</b>	139	61	4	3	6	9
<b>4e.</b>	<b>n = 222</b>	150	61	5	0	2	4
<b>5a.</b>	<b>n = 224</b>	146	59	3	3	5	8
<b>5b.</b>	<b>n = 224</b>	133	67	5	3	5	11
<b>5c.</b>	<b>n = 224</b>	134	56	5	3	9	17
<b>5d.</b>	<b>n = 224</b>	137	61	5	3	13	5
<b>5e.</b>	<b>n = 224</b>	162	51	4	2	3	2
<b>6a.</b>	<b>n = 225</b>	140	55	5	2	9	14
<b>6b.</b>	<b>n = 225</b>	137	61	5	1	7	14
<b>6c.</b>	<b>n = 223</b>	136	54	4	2	11	16
<b>6d.</b>	<b>n = 225</b>	133	58	6	1	12	15
<b>6e.</b>	<b>n = 224</b>	153	54	4	0	5	8
<b>7a.</b>	<b>n = 223</b>	156	53	1	0	2	11
<b>7b.</b>	<b>n = 221</b>	147	61	2	0	3	8
<b>7c.</b>	<b>n = 220</b>	143	57	3	1	3	13
<b>7d.</b>	<b>n = 221</b>	143	55	3	1	7	12
<b>7e.</b>	<b>n = 221</b>	158	51	4	0	3	5
<b>*8.</b>	<b>n = 210</b>	149	35	2	2	2	8
<b>9.</b>	<b>n = 225</b>	150	60	6	2	1	6
<b>10.</b>	<b>n = 223</b>	87	48	7	1	6	74



\*This item included an additional response option, 'I am not