



2004-2005 AISD Parent Survey Results

Hart Elementary School

The following report contains the results of the 2004-2005 AISD Parent Survey for your campus and all AISD schools acampo5selected each response option. Campus survey results should be examined for areas and opportunities for improvement. Results for all AISD schools at your level are presented to provide a reference for comparison.

How many parents responded to the survey in 2003-2004 and 2004-2005, and how does this compare to the number of students in the population each year?

	Campus	District EL	District MS	District HS
# of Parents Responding in 2003-2004	315	16,070	2,721	1,640
# of Students in 2003-2004	665	42,594	15,819	19,847
<i>Ratio of Parent Respondents to Students, 2003-04</i>	47.4%	37.7 %	17.2 %	8.3 %
# of Parents Responding in 2004-2005	270	12,137	2,007	2,700
# of Students in 2004-2005	764	43,566	15,705	19,976
<i>Ratio of Parent Respondents to Students in 2004-05</i>	35.3%	27.9 %	12.8 %	13.5 %

Note: The ratio of parent respondents to students is listed above as a percentage for ease of interpretation; however, it is the number of parents who responded per 100 students enrolled.

What did parents report as their child's ethnicity, and how does this compare to the ethnic distribution of the student population?

Ethnicity	% of Students, as Reported by Parent Respondents	% of Students in Campus Population
African American	16.2%	13.5%
Asian	2.7%	1.4%
Hispanic	78.8%	81.5%
Native American	1.4%	0.0%
White	0.9%	3.5%

What did parents report as their child's grade, and how does this compare to the grade level distribution of the student population?

Grade	% of Students, as Reported by Parent Respondents	% of Students in Campus Population
EC	N/A	0.0%
PK	11.9%	17.3%
K	15.4%	15.8%
1st	12.6%	15.2%
2nd	11.5%	13.1%
3rd	19.8%	14.4%
4th	13.0%	10.9%
5th	15.0%	13.4%
6th	0.8%	N/A

Note: Student population data are based on Fall 2003 and Fall 2004 PEIMS data submitted by the district to TEA, and may differ from the official AEIS report.

2004-2005 AISD Parent Survey Item Responses

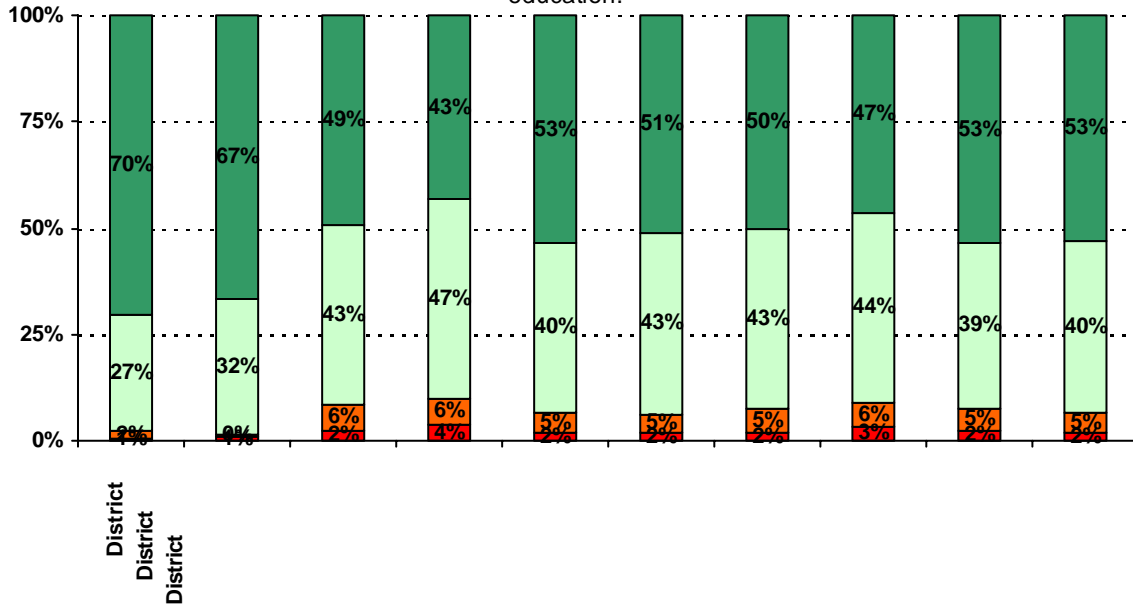
Each survey item is presented below, followed by a bar graph containing results for your campus and for all campuses at your level.

Please examine the results below to determine areas of strength and opportunities for improvement. Large percentages of "Strongly Agree" and "Agree" indicate areas in which your campus staff excel, and large percentages of "Disagree" and "Strongly Disagree" indicate areas for possible improvement.

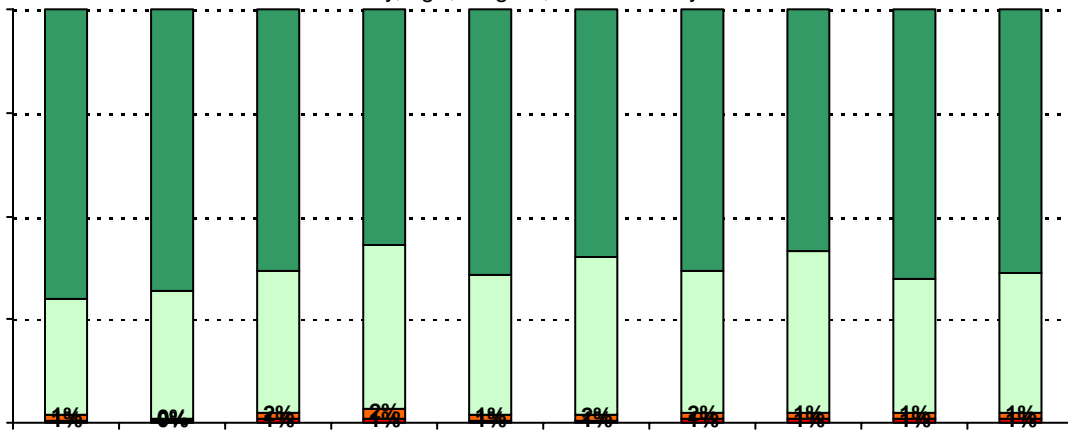
In addition, please compare the percentage of parents from your campus selecting each response option with the percentage of all AISD parents selecting each response option. If your campus percentages are very different from the percentages reported districtwide, please consider potential reasons for discrepancies.

Please also review the results below for staff categories with consistently positive or negative responses. These responses may be used to identify opportunities for praise and areas for professional development.

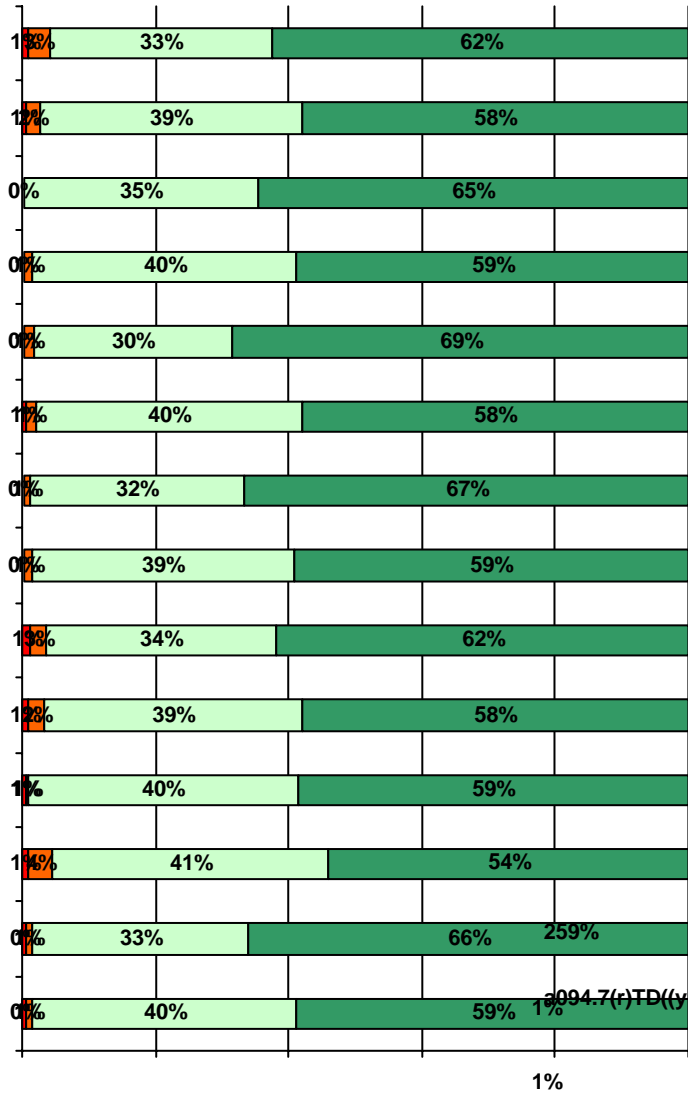
5. The following school staff have helped me to become more involved in my child's education.



7. The following school staff treat my child fairly with respect to culture, gender, ethnicity, age, religion, and disability.



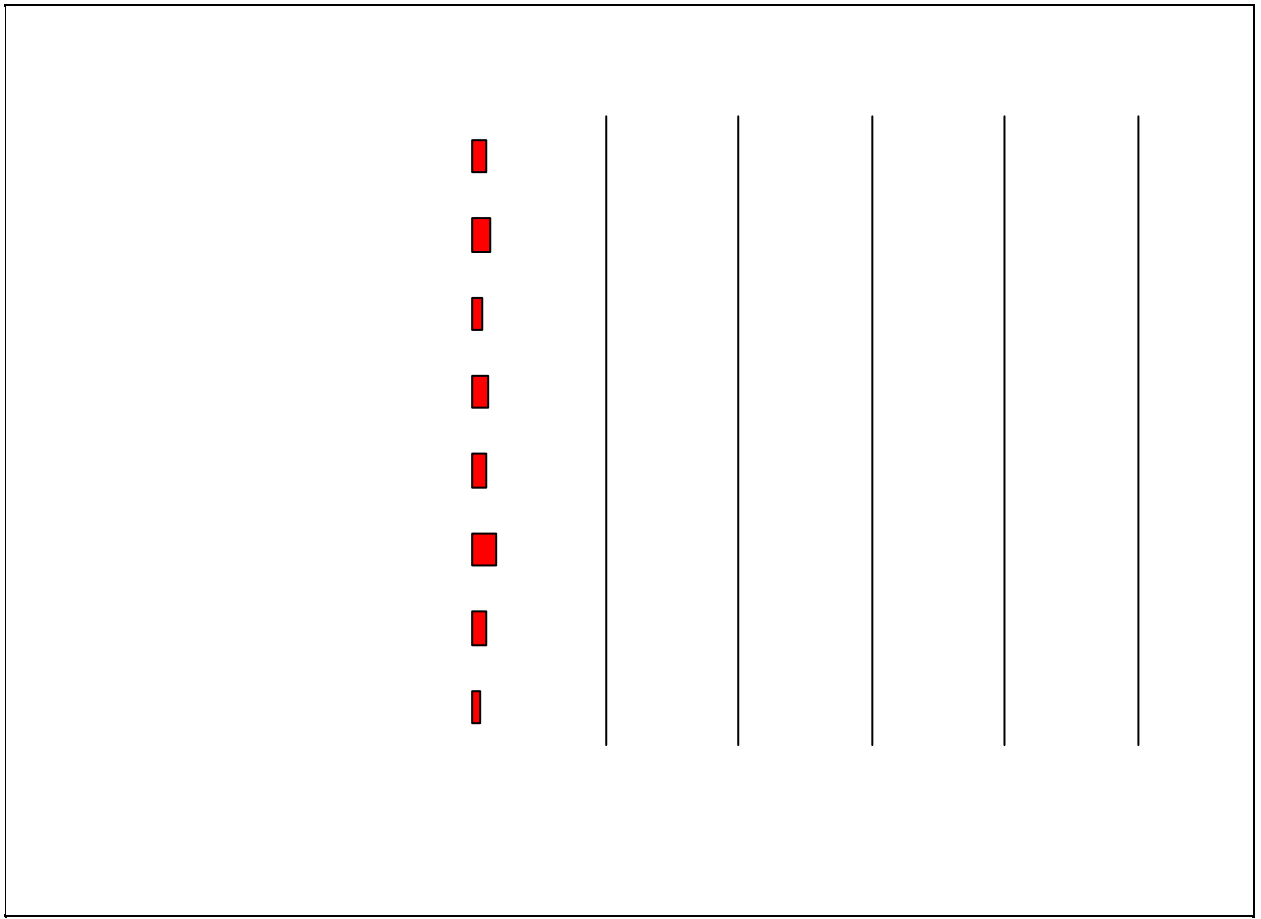
11. School staff provided me with information about the following school and district policies:



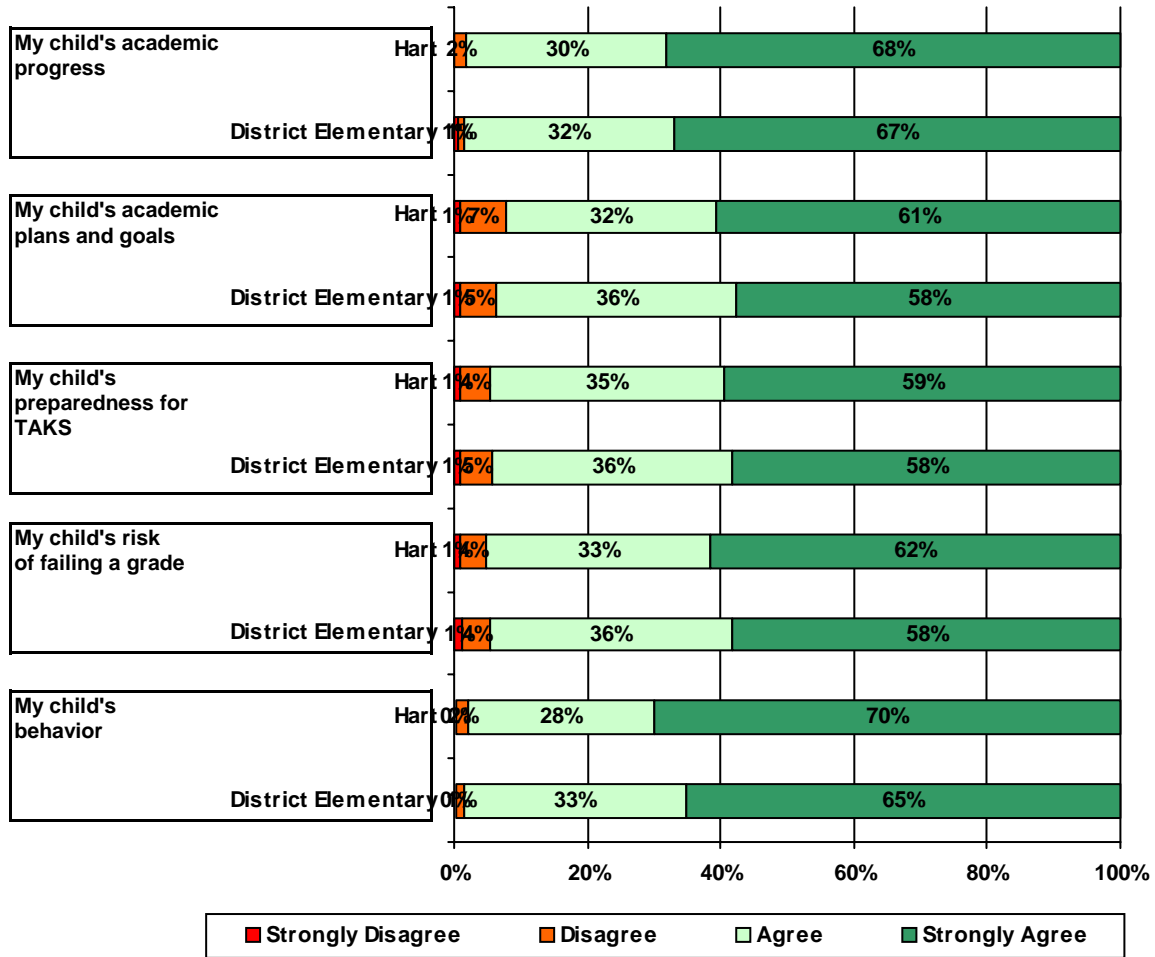
a094.7(r)TD(y1.0927d12T9.6409 34625 85.9(o%

1%

a094.7(r)TD(y1.0927d12T9.6409 34625 85.9(o%



13. School staff provided me with the following information about my child:



Item Response Details

Number of Hart Elementary School Parent Responses, by Response Option

		Strongly Agree	Agree	Disagree	Strongly Disagree	Does Not Apply	Don't Know
3a.	n = 246	115	90	2	4	6	29
3b.	n = 234	92	93	2	4	9	34
3c.	n = 229	89	77	3	3	12	45
3d.	n = 246	102	110	7	7	5	15
3e.	n = 259	172	73	3	2	2	7
4a.	n = 242	116	78	7	7	9	25
4b.	n = 229	91	85	2	6	17	28
4c.	n = 229	91	73	4	4	20	37
4d.	n = 242	106	86	8	7	14	21
4e.	n = 256	165	73	1	3	6	8
5a.	n = 236	102	77	9	4	16	28
5b.	n = 229	82	78	10	6	18	35
5c.	n = 232	90	75	8	3	21	35
5d.	n = 237	80	88	11	7	25	26
5e.	n = 256	162	78	1	2	7	6
6a.	n = 237	94	76	2	2	20	43
6b.	n = 231	79	75	2	3	24	48
6c.	n = 231	76	73	2	2	25	53
6d.	n = 232	73	79	4	4	28	44
6e.	n = 252	142	72	3	0	8	27
7a.	n = 242	138	73	3	2	5	21
7b.	n = 235	119	79	3	2	7	25
7c.	n = 233	114	73	3	1	12	30
7d.	n = 238	122	85	5	2	5	19
7e.	n = 255	165	75	1	1	4	9
*8.	n = 239	106	81	3	2	8	14
9.	n = 257	145	95	3	2	0	12
10.	n = 243	55	69	7	4	7	101



*This item included an additional response option, 'I am not