



2004-2005 AISD Parent Survey Results

Highland Park Elementary School

The following report contains the results of the 2004-2005 AISD Parent Survey for your campus and all AISD schools at your level. The first section of this report provides a comparison of the campus demographics and the demographics reported by parents who responded to the survey from your campus. The next section describes the percentage of parents selecting specific responses for each survey item, and the final section indicates the actual number of parents who selected each response option. Campus survey results should be examined for areas of strength and opportunities for improvement. Results for all AISD schools at your level are presented to provide a reference for comparison.

How many parents responded to the survey in 2003-2004 and 2004-2005, and how does this compare to the number of students in the population each year?

	Campus	District EL	District MS	District HS
# of Parents Responding in 2003-2004	156	16,070	2,721	1,640
# of Students in 2003-2004	501	42,594	15,819	19,847
<i>Ratio of Parent Respondents to Students, 2003-04</i>	31.1%	37.7 %	17.2 %	8.3 %
# of Parents Responding in 2004-2005	148	12,137	2,007	2,700
# of Students in 2004-2005	493	43,566	15,705	19,976
<i>Ratio of Parent Respondents to Students in 2004-05</i>	30%	27.9 %	12.8 %	13.5 %

Note: The ratio of parent respondents to students is listed above as a percentage for ease of interpretation; however, it is the number of parents who responded per 100 students enrolled.

What did parents report as their child's ethnicity, and how does this compare to the ethnic distribution of the student population?

Ethnicity	% of Students, as Reported by Parent Respondents	% of Students in Campus Population
African American	1.5%	1.4%
Asian	4.6%	4.7%
Hispanic	12.3%	8.3%
Native American	0.0%	0.0%
White	81.5%	85.6%

What did parents report as their child's grade, and how does this compare to the grade level distribution of the student population?

Grade	% of Students, as Reported by Parent Respondents	% of Students in Campus Population
EC	0%	0.2%
PK	N/A	0.0%
K	15.4%	15.0%
1st	16.1%	16.6%
2nd	18.2%	19.1%
3rd	13.3%	17.6%
4th	16.1%	16.2%
5th	21.0%	15.2%
6th	N/A	N/A

Note: Student population data are based on Fall 2003 and Fall 2004 PEIMS data submitted by the district to TEA, and may differ from the official AEIS report.

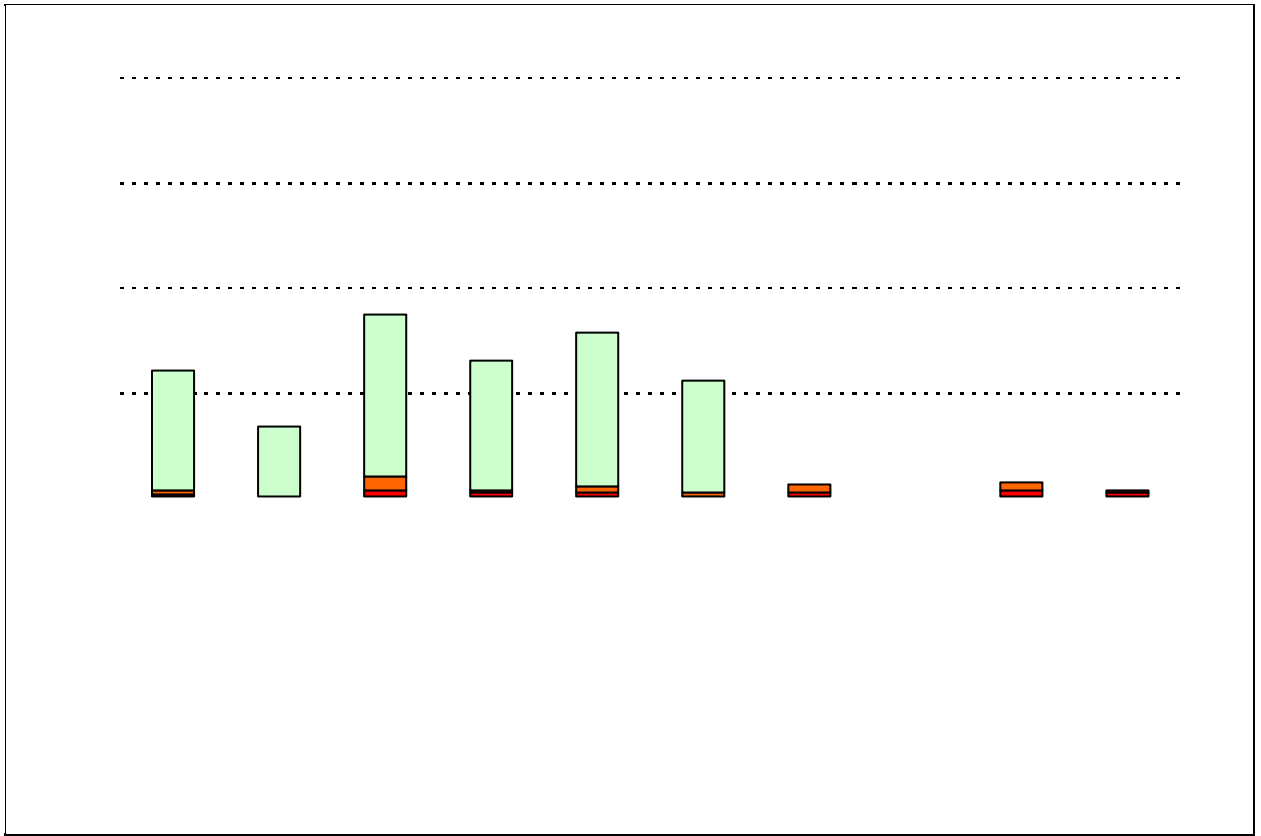
2004-2005 AISD Parent Survey Item Responses

Each survey item is presented below, followed by a bar graph containing results for your campus and for all campuses at your level.

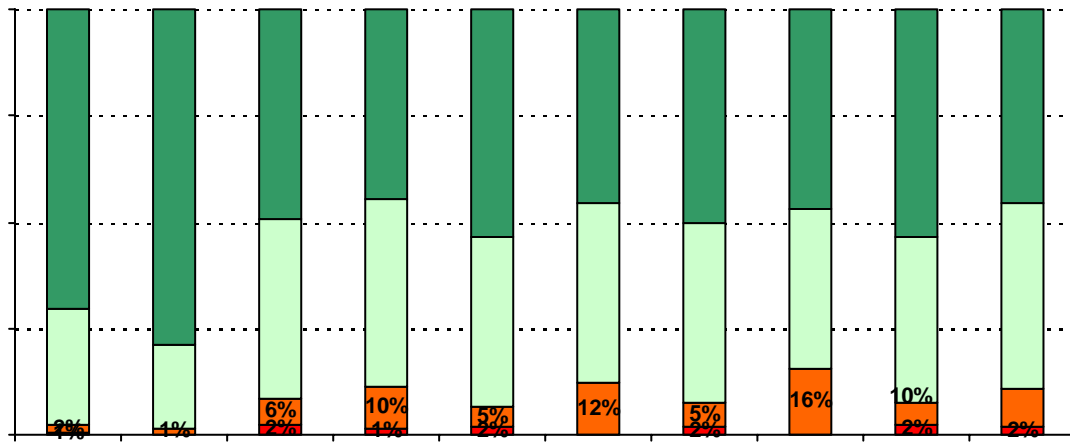
Please examine the results below to determine areas of strength and opportunities for improvement. Large percentages of "Strongly Agree" and "Agree" indicate areas in which your campus staff excel, and large percentages of "Disagree" and "Strongly Disagree" indicate areas for possible improvement.

In addition, please compare the percentage of parents from your campus selecting each response option with the percentage of all AISD parents selecting each response option. If your campus percentages are very different from the percentages reported districtwide, please consider potential reasons for discrepancies.

Please also review the results below for staff categories with consistently positive or negative responses. These responses may be used to identify opportunities for praise and areas for professional development.

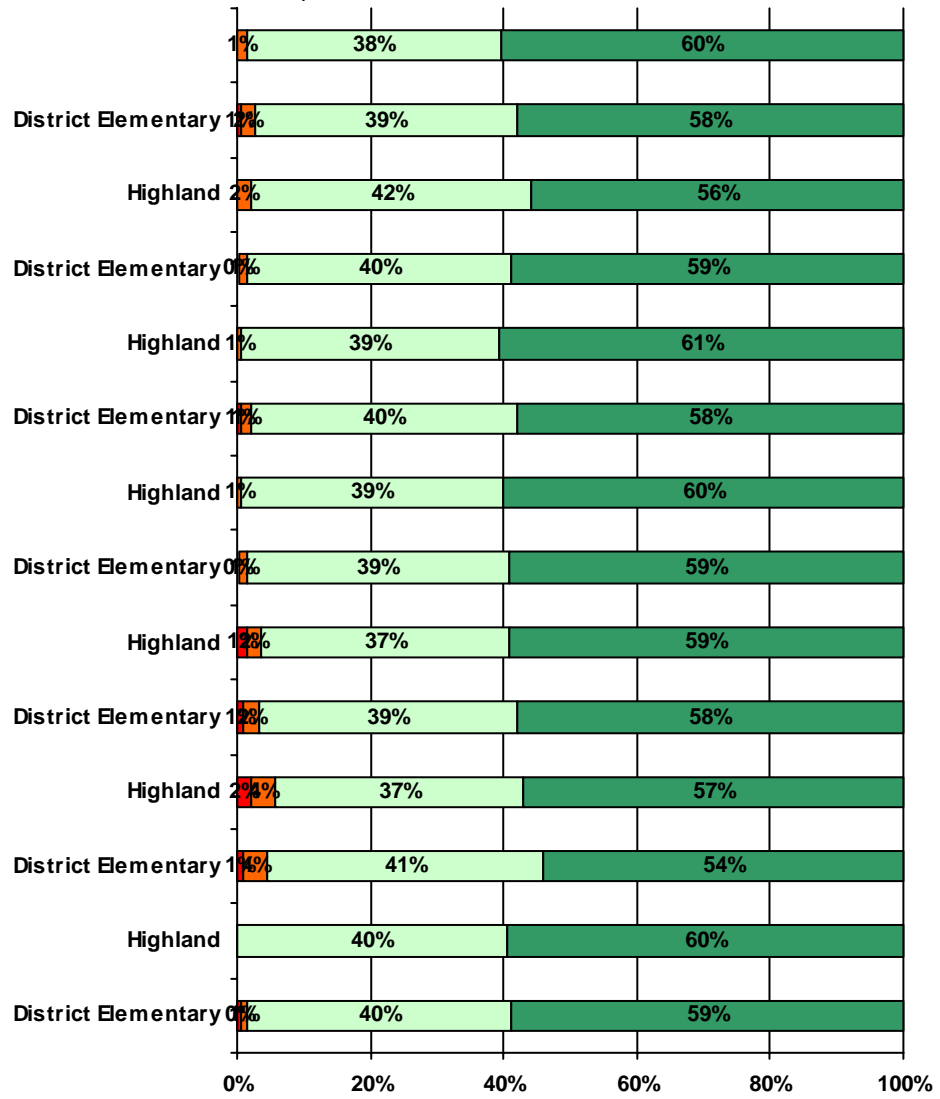


5. The following school staff have helped me to become more involved in my child's education.

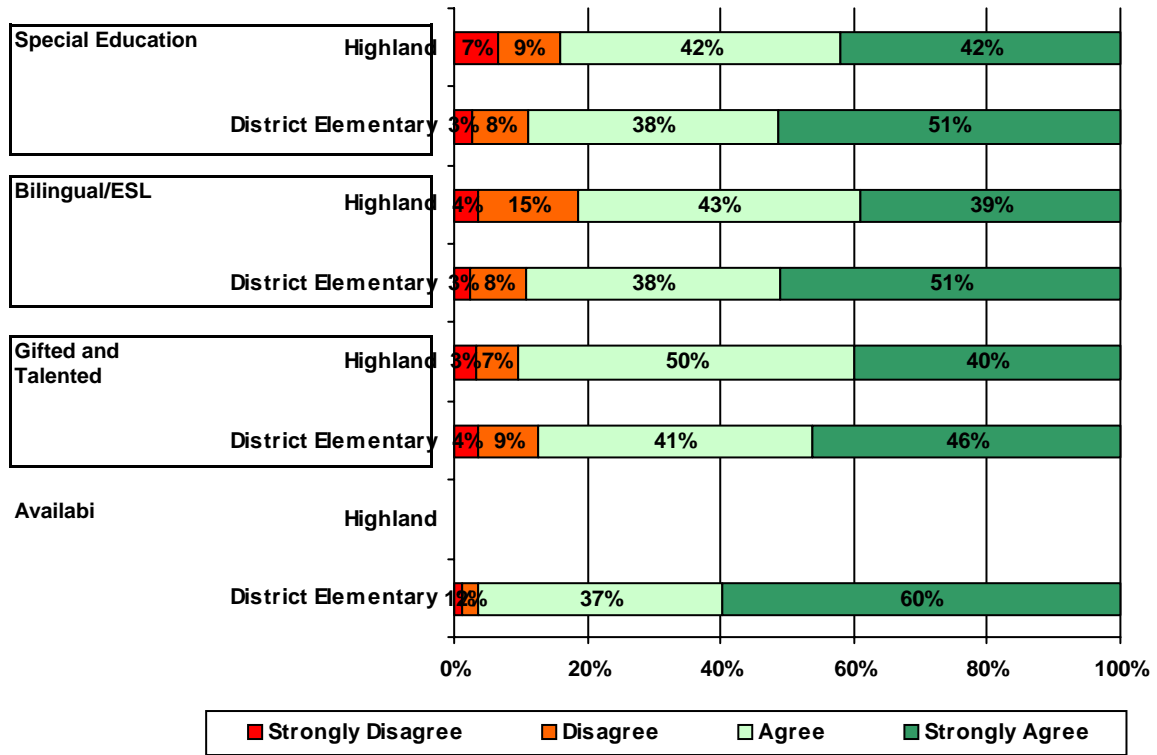


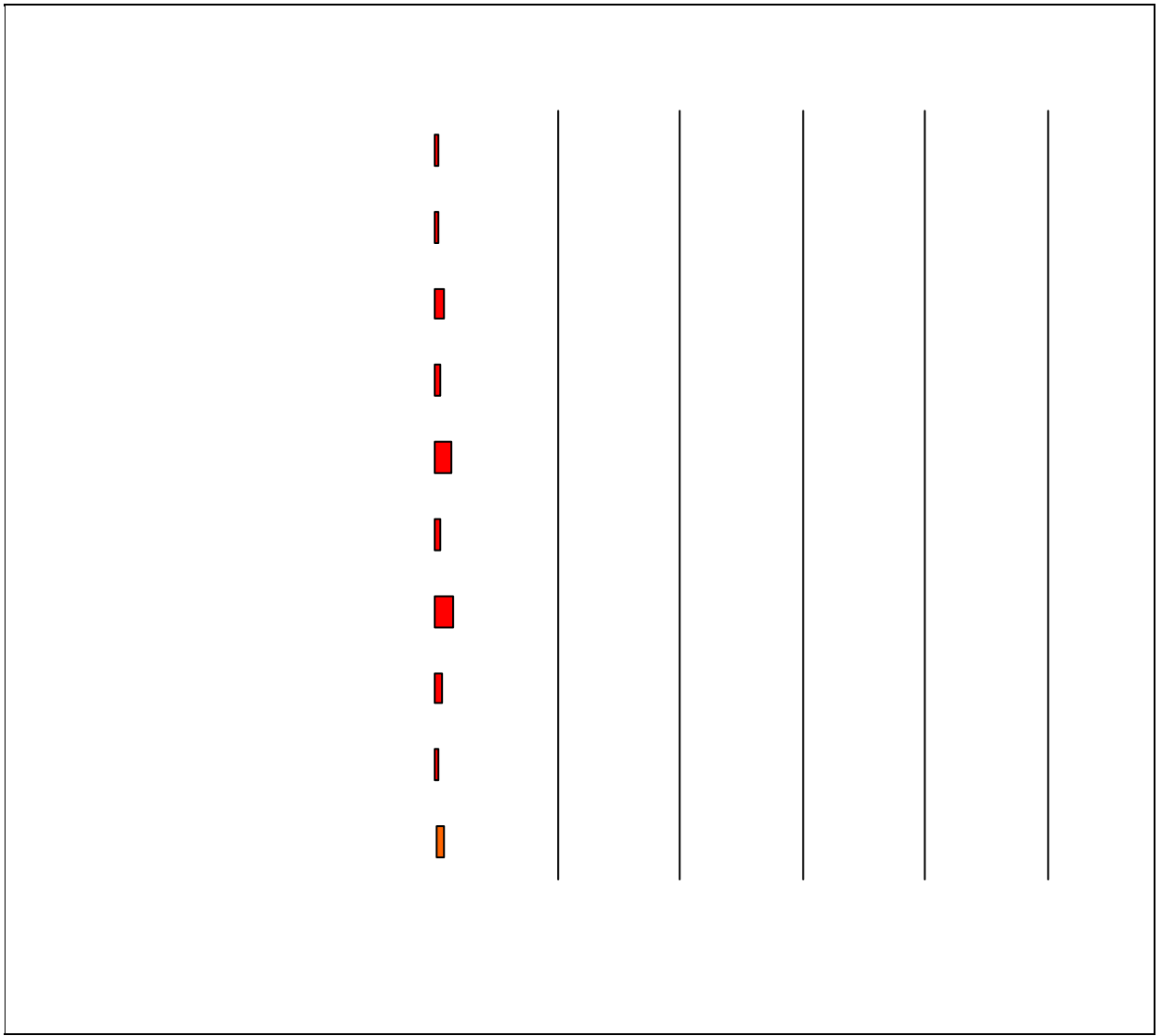
A rectangular box with a solid black border. Inside the box, there are four horizontal dotted lines, evenly spaced, intended for writing text.

11. School staff provided me with information about the following school and district policies:



12. School staff provided me with information about the following programs:





Item Response Details

Number of Highland Park Elementary School Parent Responses, by Response Option

		Strongly Agree	Agree	Disagree	Strongly Disagree	Does Not Apply	Don't Know
3a.	n = 144	88	48	1	1	0	6
3b.	n = 143	65	25	0	0	6	47
3c.	n = 145	63	23	1	0	9	49
3d.	n = 144	92	42	1	1	2	6
3e.	n = 145	121	24	0	0	0	0
Total		329	139	3	2	15	68



*This item included an additional response option, 'I am no