



2004-2005 AISD Parent Survey Results

Hill Elementary School

The following report contains the results of the 2004-2005 AISD Parent Survey for your campus and all AISD schools at your level. The first section of this report provides a comparison of the campus demographics and the demographics reported by parents who responded to the survey from your campus. The next section describes the percentage of parents selecting specific responses for each survey item, and the final section indicates the actual number of parents who selected each response option. Campus survey results should be examined for areas of strength and opportunities for improvement. Results for all AISD schools at your level are presented to provide a reference for comparison.

How many parents responded to the survey in 2003-2004 and 2004-2005, and how does this compare to the number of students in the population each year?

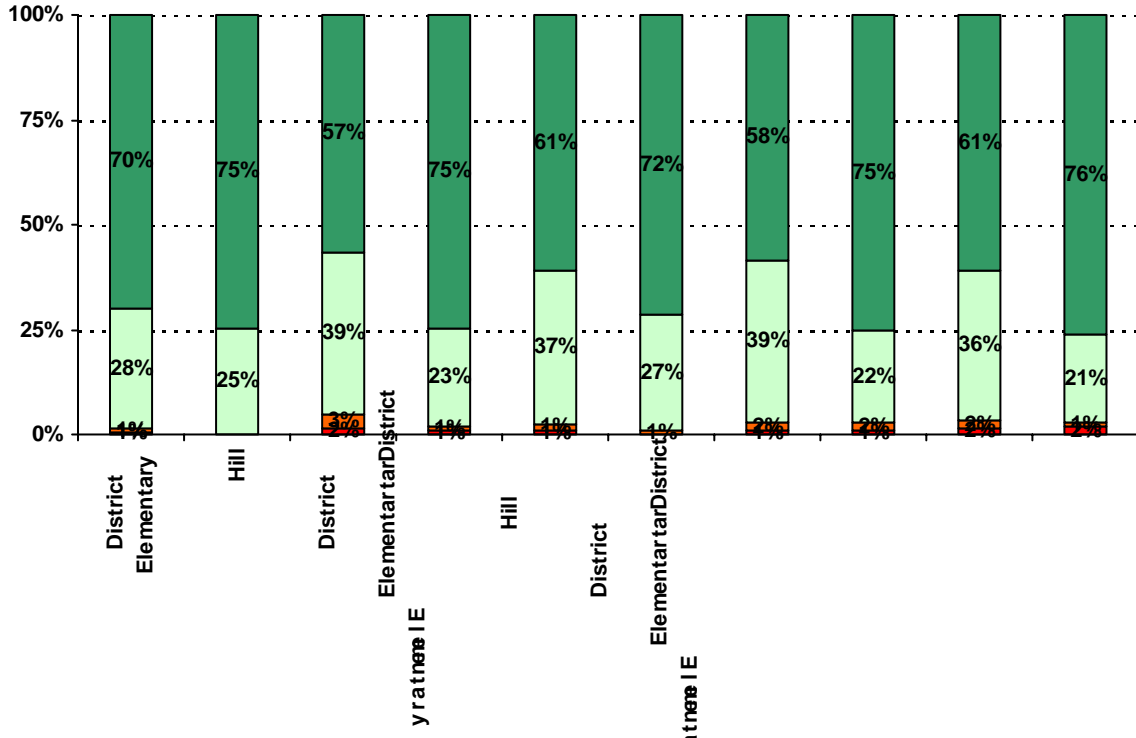
	Campus	District EL	District MS	District HS
# of Parents Responding in 2003-2004	188	16,070	2,721	1,640
# of Students in 2003-2004	740	42,594	15,819	19,847
<i>Ratio of Parent Respondents to Students, 2003-04</i>	25.4%	37.7 %	17.2 %	8.3 %
# of Parents Responding in 2004-2005	116	12,137	2,007	2,700
# of Students in 2004-2005	746	43,566	15,705	19,976
<i>Ratio of Parent Respondents to Students in 2004-05</i>	15.5%	27.9 %	12.8 %	13.5 %

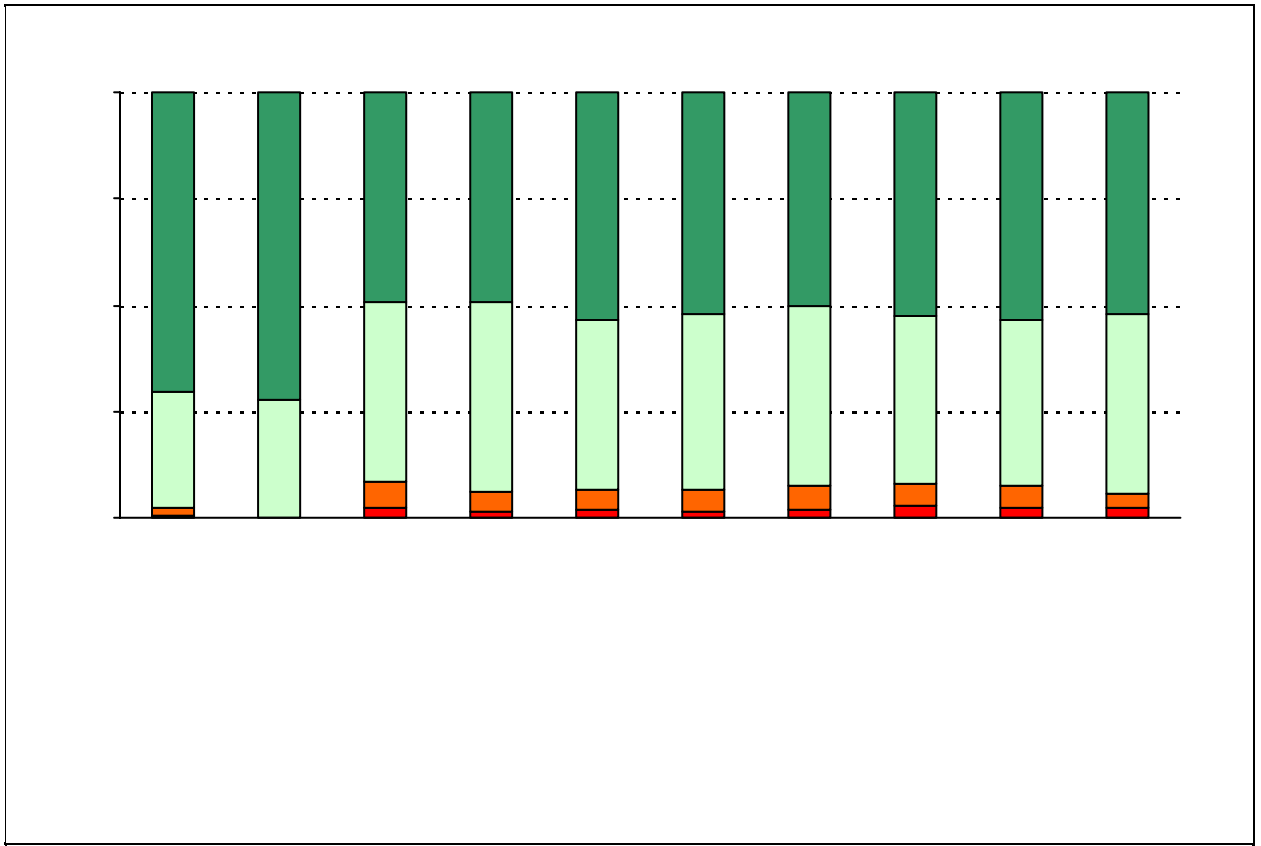
Note: The ratio of parent respondents to students is listed above as a percentage for ease of interpretation; however, it is the number of parents who responded per 100 students enrolled.

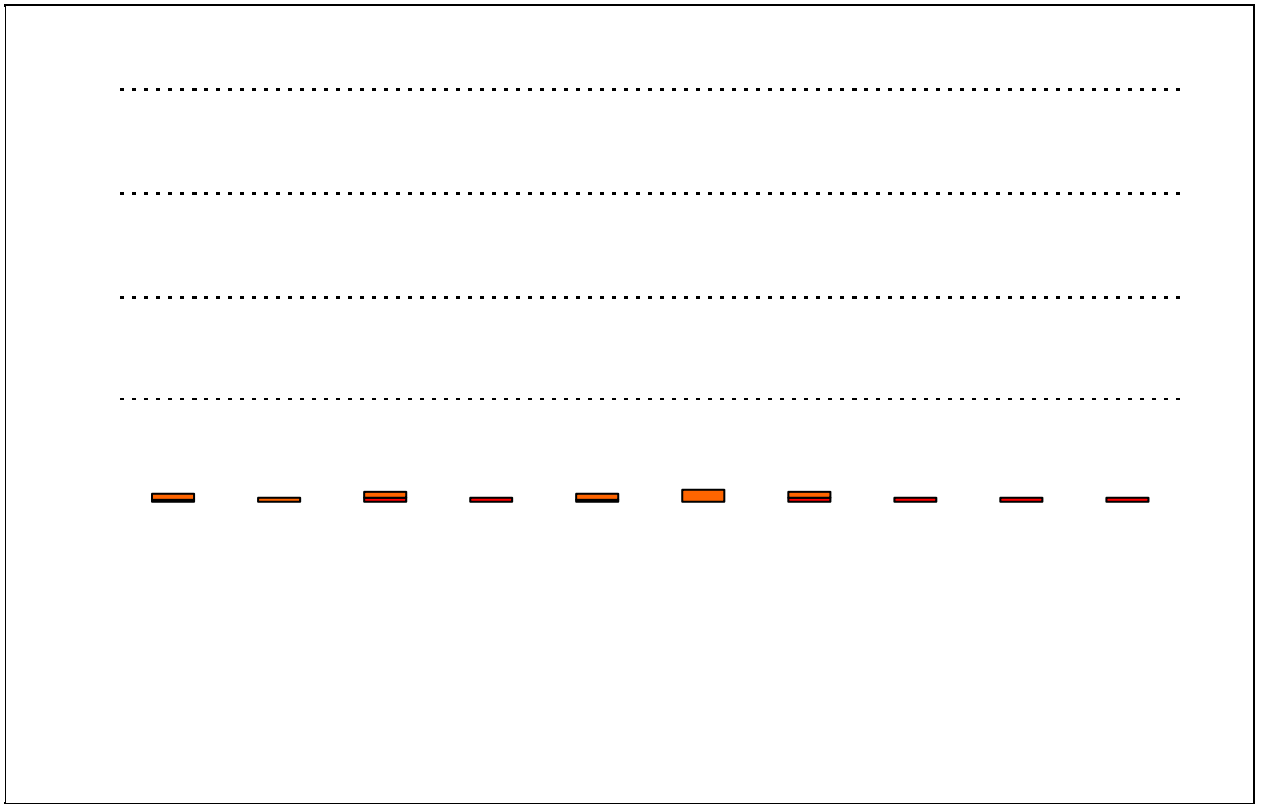
What did parents report as their child's ethnicity, and how does this compare to the ethnic distribution of the student population?

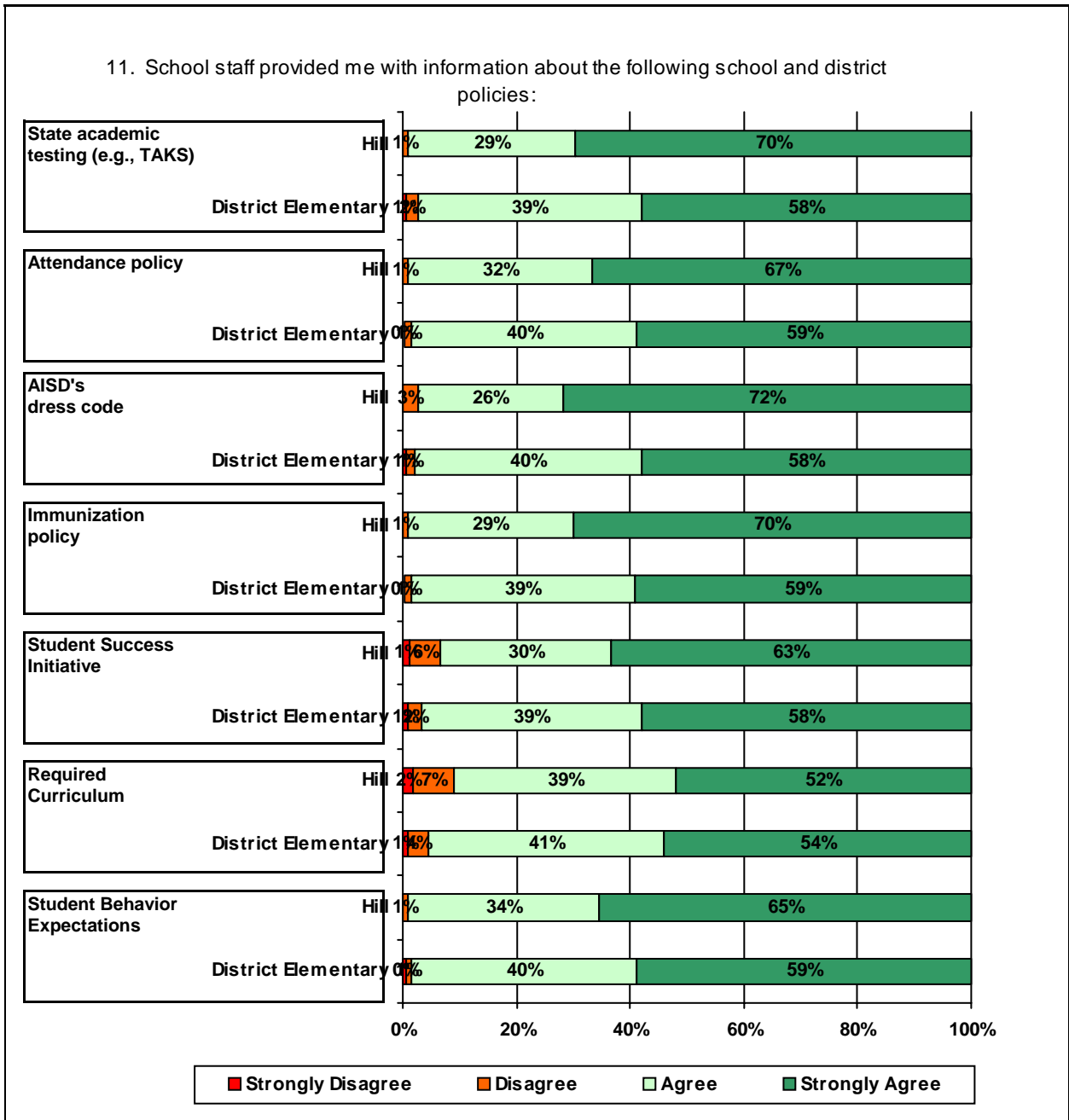
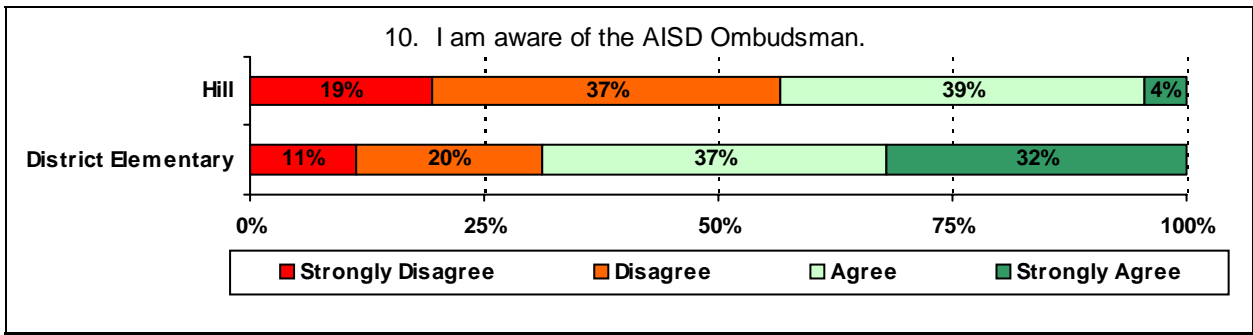
Ethnicity	% of Students, as Reported by Parent Respondents	% of Students in Campus Population
African American	1.0%	3.5%
Asian	8.0%	9.1%
Hispanic	5.0%	11.8%
Native American	2.0%	0.1%
White	84.0%	75.5%

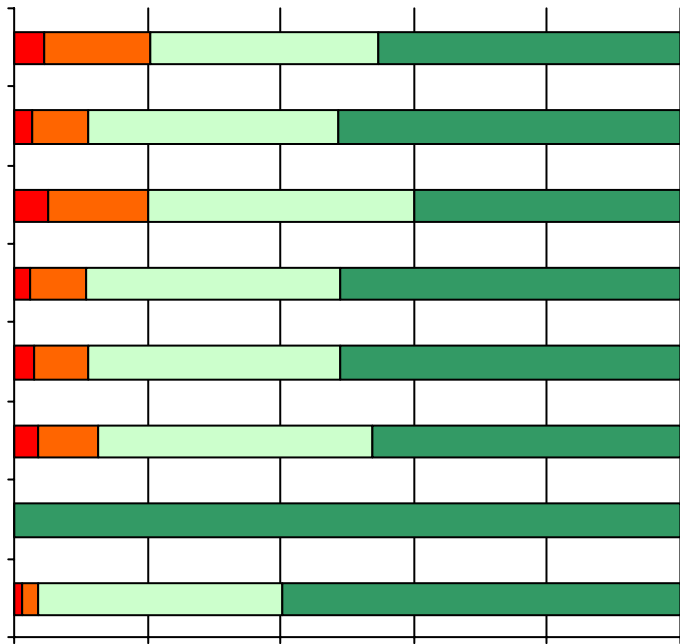
3. The following school staff treat me with courtesy and respect.



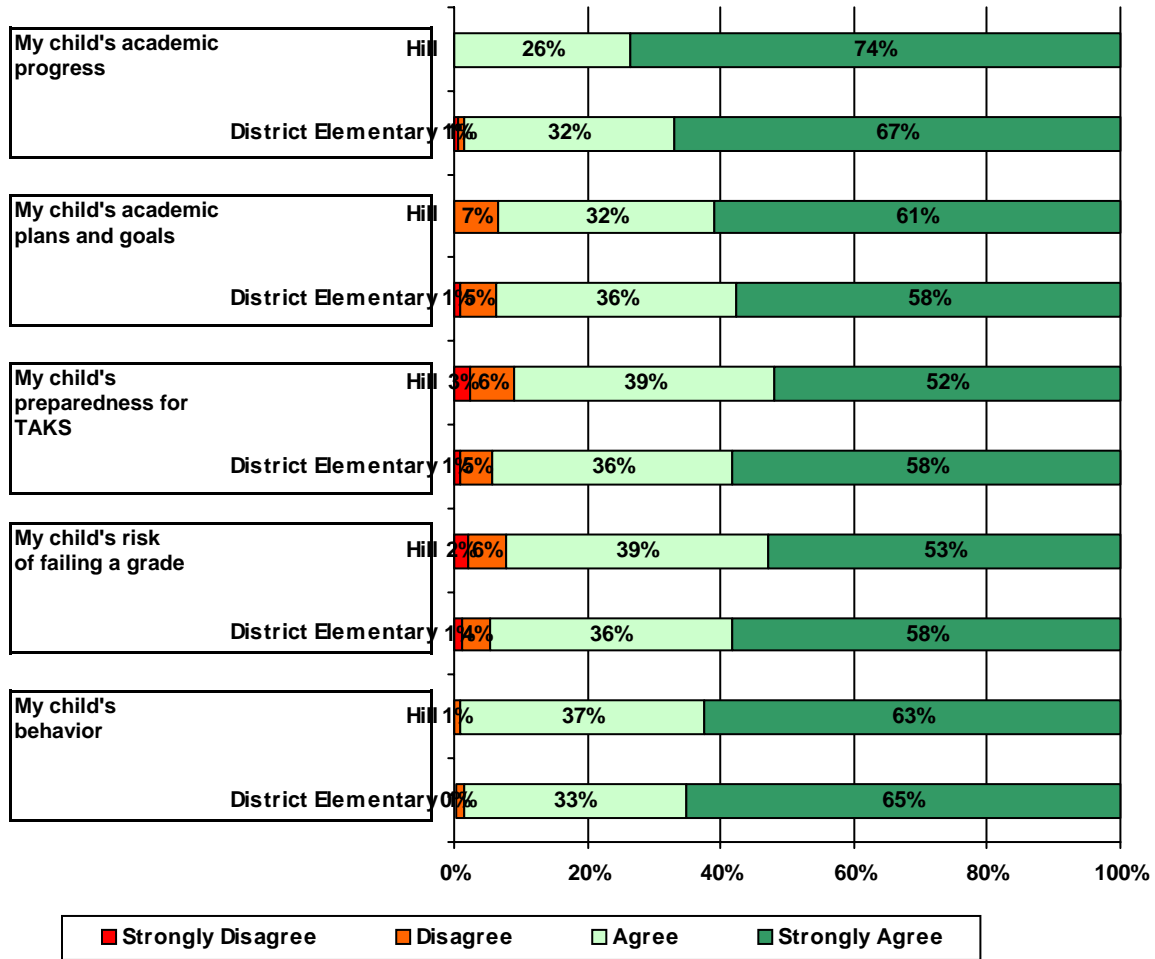








13. School staff provided me with the following information about my child:



Item Response Details

Number of Hill Elementary School Parent Responses, by Response Option

		Strongly Agree	Agree	Disagree	Strongly Disagree	Does Not Apply	Don't Know
3a.	n = 115	83	23	1	2	2	4
3b.	n = 114	73	21	2	1	3	14
3c.	n = 114	68	26	1	0	5	14
3d.	n = 115	80	25	1	1	2	6
3e.	n = 114	85	29	0	0	0	0
4a.	n = 115	69	31	2	2	4	7
4b.	n = 115	60	19	3	2	8	23
4c.	n = 115	62	29	4	1	8	11
4d.	n = 115	60	36	0	2	7	10
4e.	n = 115	88	24	0	0	1	2
5a.	n = 112	47	38	3	2	12	10
5b.	n = 111	40	30	4	2	13	22
5c.	n = 112	40	32	4	1	20	15
5d.	n = 109	33	30	3	1	26	16
5e.	n = 113	75	29	0	0	5	4
6a.	n = 112	47	36	2	2	13	12
6b.	n = 112	41	28	3	2	13	25
6c.	n = 112	45	29	2	1	15	20
6d.	n = 112	30	26	1	2	28	25
6e.	n = 112	70	26	3	0	9	4
7a.	n = 115	81	21	3	1	2	7
7b.	n = 114	74	21	1	1	2	15
7c.	n = 113	75	20	3	0	3	12
7d.	n = 115	75	26	0	1	3	10
7e.	n = 115	84	24	1	0	1	5
*8.	n = 112	10	40	13	11	4	28
9.	n = 115	72	41	1	0	0	1
10.	n = 114	3	26	25	13	2	45

11a.	n = 114	74	31	1	0	6	2
11b.	n = 115	76	37	1	0	0	1
11c.	n = 115	76	37	1	0	0	1
11d.	n = 115	79	33	1	0	1	1
11e.	n = 115	57	27	5	1	20	5
11f.	n = 114	57	43	8	2	0	4
		74	38	1	0	0	2

*This item included an additional response option, 'I am not aware of AISD's academic benchmark testing.' An additional 6 parents selected this option.