

International High School

How many parents responded to the survey in 2005-2006 and 2006-2007, and how does this compare to the number of students in the population each year?

	Campus	District EL	District MS	District HS
	0			
	%			
	44			
	260			
	<i>16.9%</i>			

What did parents report as their child's ethnicity, and how does this compare to the ethnic distribution of the student population?

Ethnicity	% of Students, as Reported by Campus Parent Respondents	% of Students in Campus Population
	0.0%	
	5.0%	
	90.0%	
Native American	0.0%	0.0%
White	5.0%	2.7%

What did parents report as their child's grade, and how does this compare to the grade level distribution of the student population?

Grade	% of Students, as Reported by Campus Parent Respondents	% of Students in Campus Population
6th	N/A	N/A
7th	N/A	N/A
8th	N/A	N/A
9th	61.5%	51.9%
10th	38.5%	48.1%
11th	N/A	N/A
12th	N/A	N/A

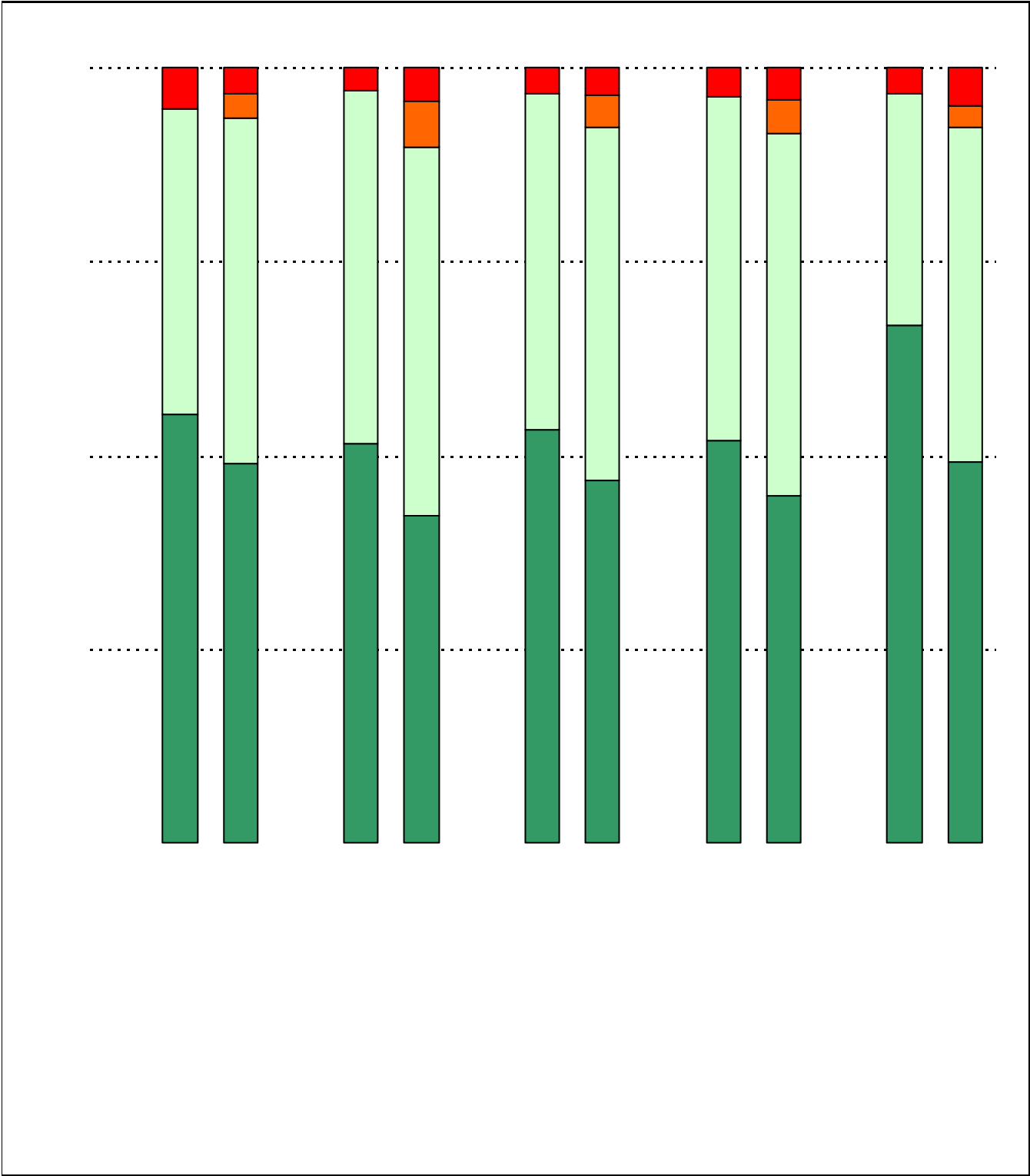
Note: Student population data are based on Fall PEIMS data submitted by the district to TEA, and may differ from the official AEIS report.

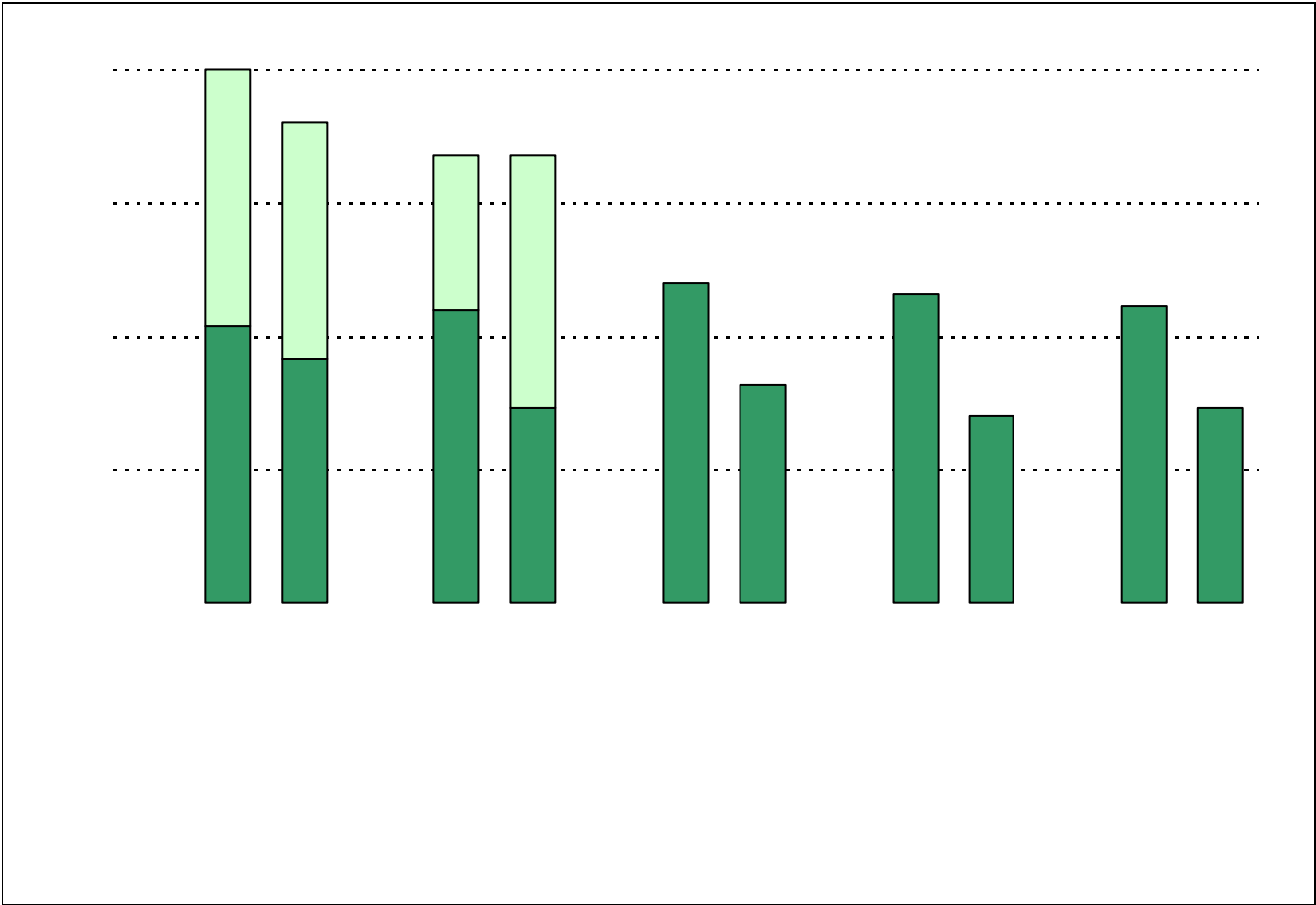
USING THE RESULTS OF THE AISD PARENT SURVEY

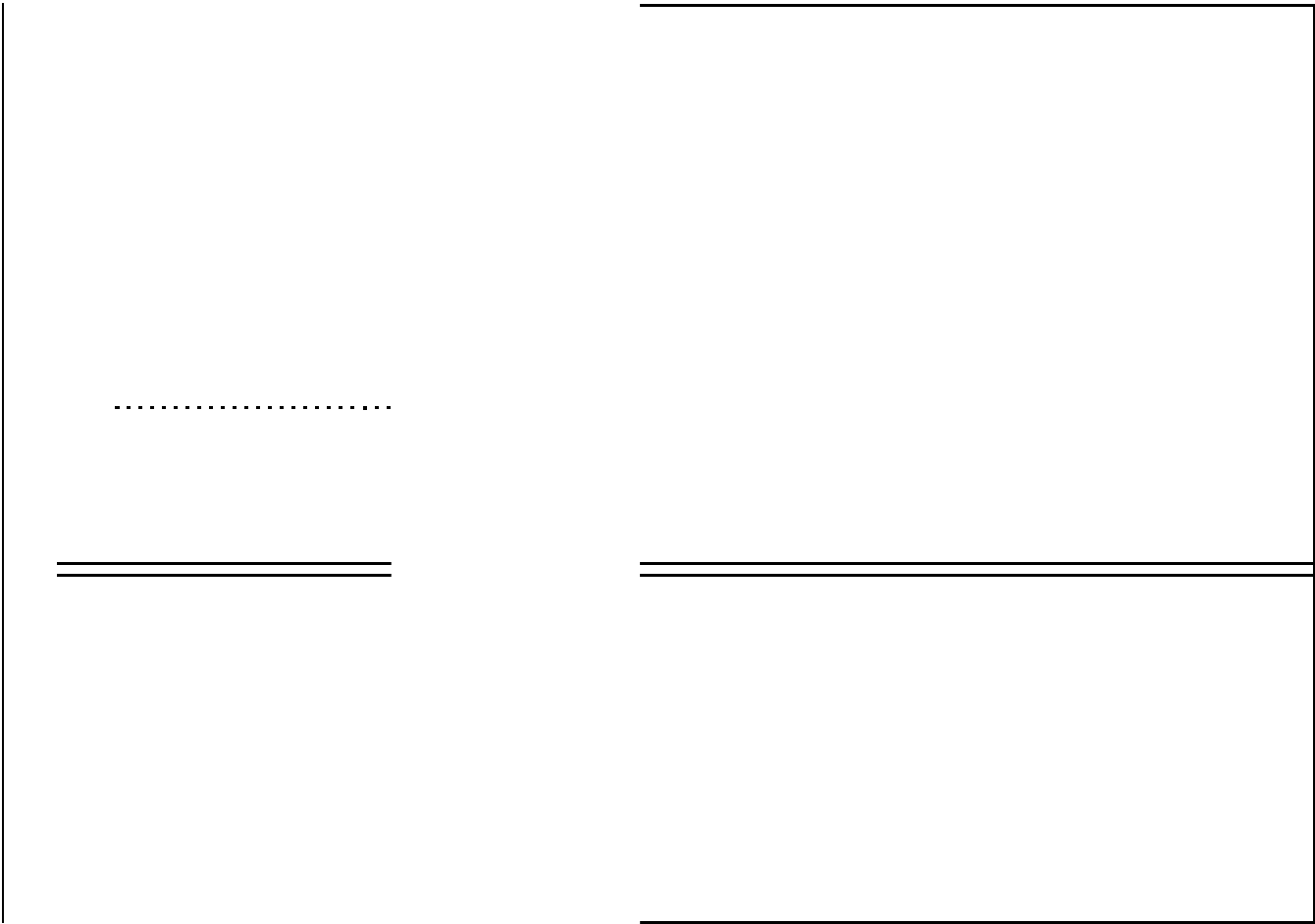
Each survey item is presented below, followed by a bar graph containing your school’s results for two years and this year’s results for all campuses at your level. You will be able to identify areas in which your school’s results have changed over time, and you will be able to compare the responses of your school’s parents to those of parents at your level district-wide.

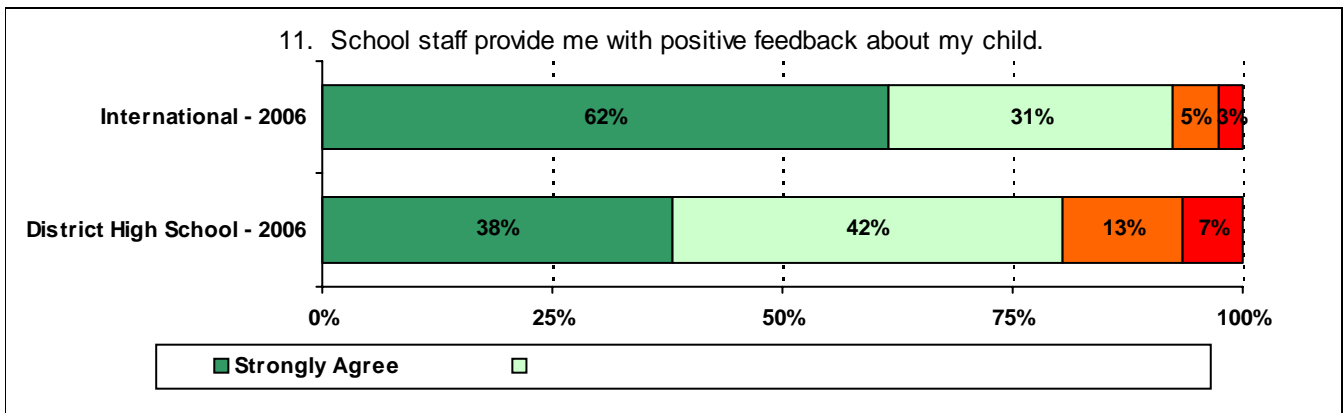
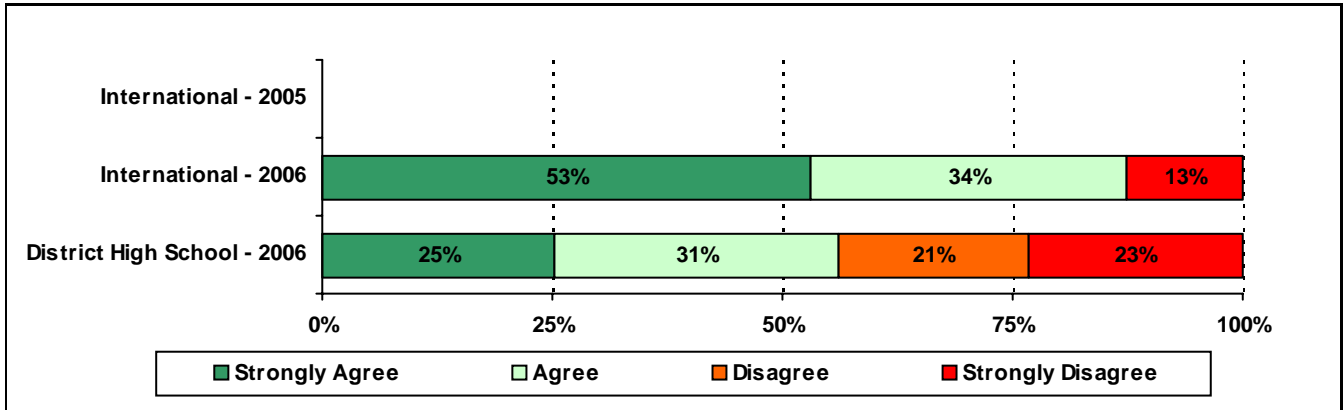
Please examine your results to determine areas of strength and opportunities for improvement. Areas of strength can be identified by large percentages of parents who “Strongly Agree” or “Agree” with a statement. Opportunities for improvement can be identified by large percentages of parents who “Disagree” or “Strongly Disagree” with a statement. In addition, please look for patterns in which one staff category consistently receives more positive or negative responses than other staff categories. This will help you to identify opportunities for praise and areas in which training may be necessary. District responses for all schools at your level are also provided for comparison with 2006-2007 responses from your school. If your campus percentages are very different from the percentages reported by parents district-wide, please consider potential reasons for discrepancies.

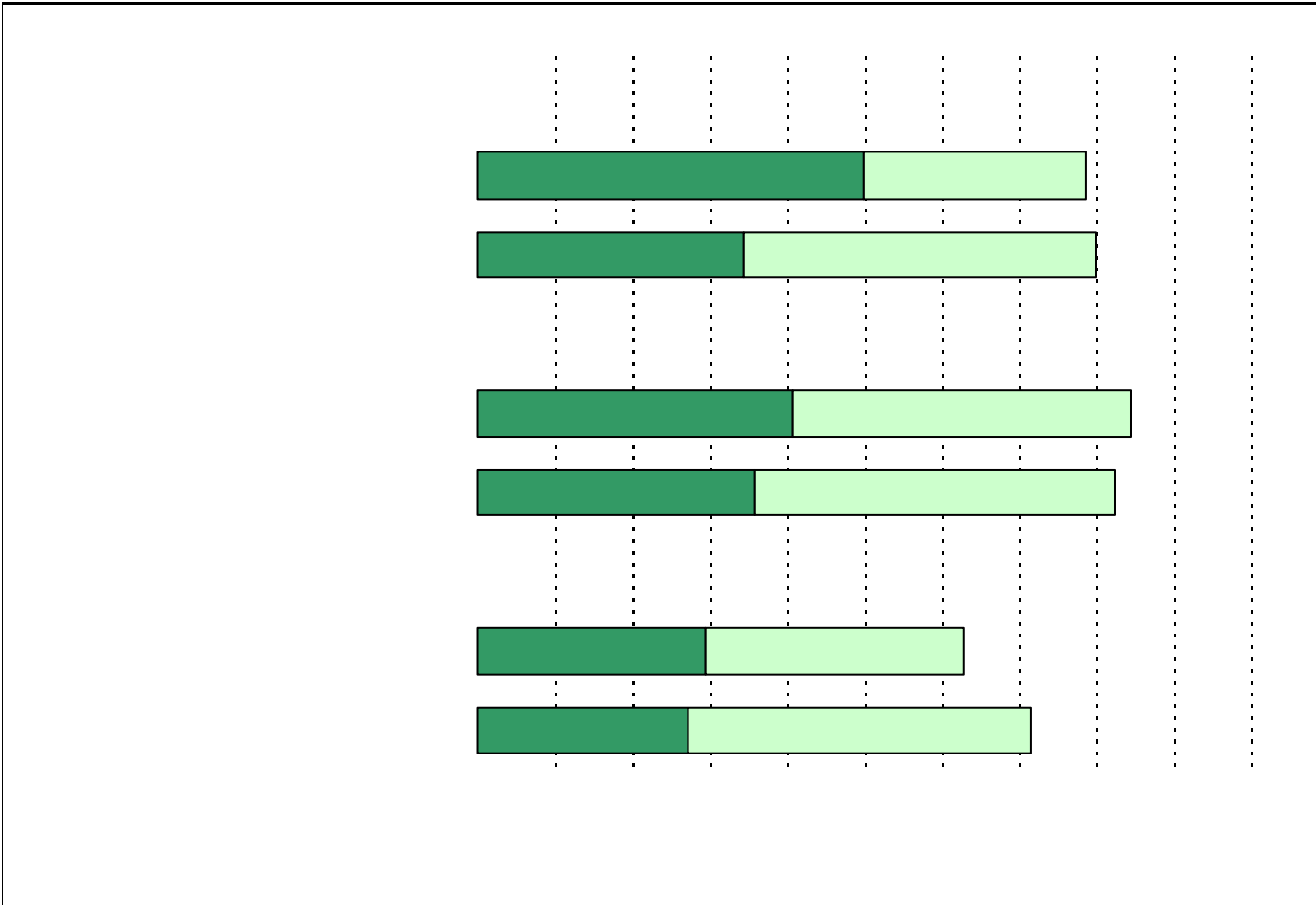
Longitudinal data are provided, when available. It is important to look at the responses from year to year to determine whether there are any areas in which percentages have changed by more than a few points. Keep in mind that when response rates are low, the percentages may appear to fluctuate more without necessarily signaling a serious shift

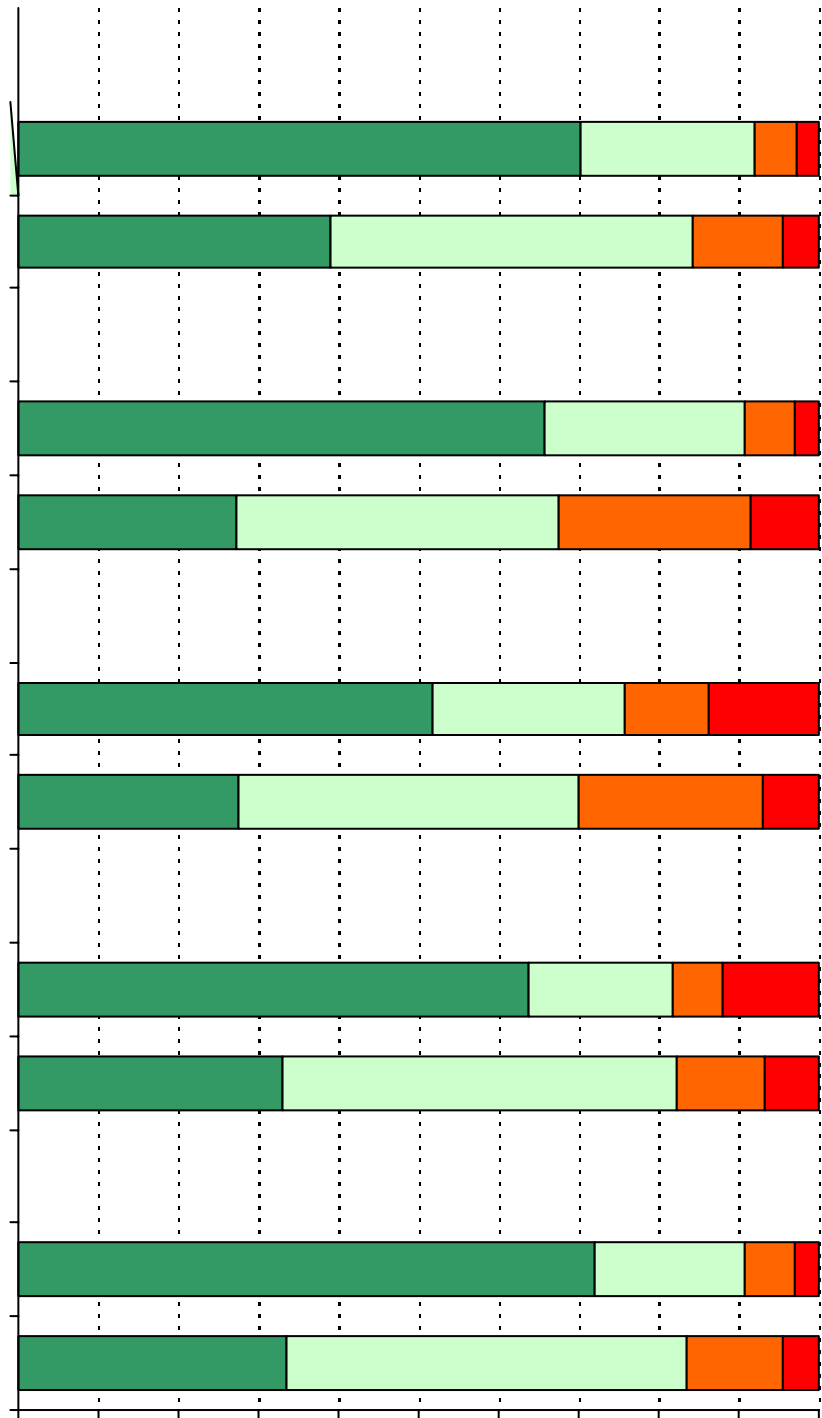




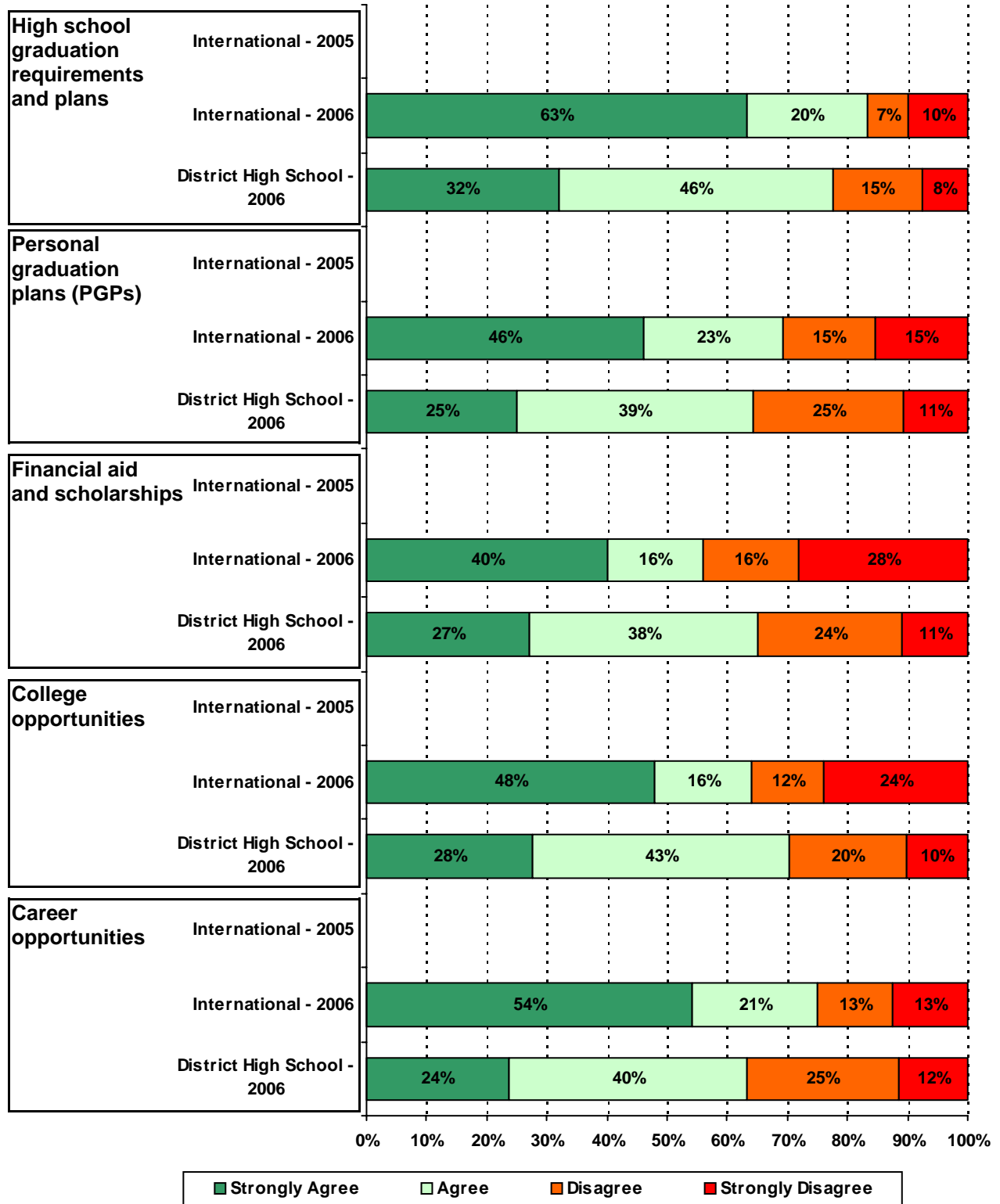




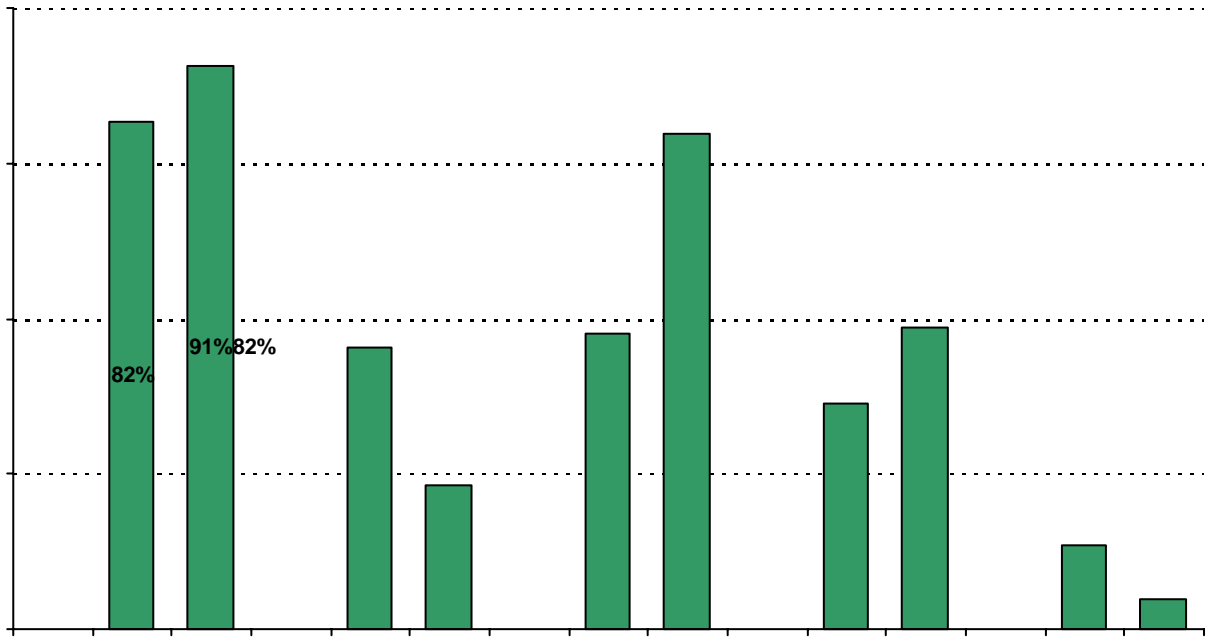




16. School staff provide me with useful information about the following graduation and post-graduation topic



20. My goals for my child include the following plans:



Item Response Details

Number of International High School Parent Responses, by Response Option

		Strongly Agree	Agree	Disagree	Strongly Disagree	Don't Know/NA
4.	n = 38		0	38		
5a.	n = 33	20	9	0	1	3
5b.	n = 32	14	12	0	1	5
5c.	n = 34	16	13	0	1	4
5d.	n = 34	17	15	0	1	1
5e.	n = 40	21	15	0	2	2
6a.	n = 32	15	7	3	2	5
6b.	n = 30	15	10	1	0	4
6c.	n = 29	15	9	1	0	4
6d.	n = 32	17	9	4	1	1
6e.	n = 31	15	14	0	0	2
7a.	n = 31	17	6	2	1	5
7b.	n = 29	16	9	1	0	3
7c.	n = 33	18	10	0	0	5
7d.	n = 34	20	12	1	0	1
7e.	n = 31	19	8	1	1	2
8a.	n = 32	14	9	1	1	7
8b.	n = 30	14	10	0	0	6
8c.	n = 31	12	10	0	0	9
8d.	n = 33	15	10	1	1	6
8e.	n = 39	19	13	0	1	6
9a.	n = 33	21	9	1	1	1
9b.	n = 32	21	10	0	0	1
9c.	n = 33	22	11	0	0	0
9d.	n = 33	22	11	0	0	0
9e.	n = 38	24	11	0	2	1
9f.	n = 33	21	9	0	0	3
10.	n = 37	17	11	0	4	5
11.	n = 40	24	12	2	1	1
12.	n = 39	15	17	1	3	3

Number of International High School Parent Responses, by Response Option
(Continued)

		Strongly Agree	Agree	Disagree	Strongly Disagree	Don't Know/NA
13a.	n = 39	17	14	2	4	2
13b.	n = 35	15	11	4	1	4
13c.	n = 36	15	16	2	0	3
14a.	n = 33	14	8	2	4	5
14b.	n = 37	13	14	3	2	5
14c.	n = 35	8	9	4	6	8
15a.	n = 38	26	8	2	1	1
15b.	n = 36	21	8	2	1	4
15c.	n = 34	15	7	3	4	5
15d.	n = 35	21	6	2	4	2
15e.	n = 34	23	6	2	1	2
16a.	n = 34	19	6	2	3	4
16b.	n = 33	12	6	4	4	7
16c.	n = 31	10	4	4	7	6
16d.	n = 31	12	4	3	6	6
16e.	n = 30	13	5	3	3	6
17.	n = 39	25	10	2	2	0
18.	n = 37	12	16	4	4	1
		Yes	No			
19a.	n = 32	19	13			
19b.	n = 32	17	15			
19c.	n = 26	11	15			
19d.	n = 30	14	16			
19e.	n = 28	20	8			
19f.	n = 28	16	12			
19g.	n = 28	15	13			
20.	n = 44	<p><i>Item 20 did not use the "Strongly Agree" to "Strongly Disagree" scale. Numbers below reflect the number of parents selecting each goal. These numbers will not sum to the total number of item respondents because parents may select multiple goals.</i></p>				
		High School diploma	Certificate/ Associates degree	Bachelors degree	Graduate/ Professional degree	Military service
		36	20	21	16	6