



2004-2005 AISD Parent Survey Results

Johnson High School

The following report contains the results of the 2004-2005 AISD Parent Survey for your campus and all AISD schools at your level. The first section of this report provides a comparison of the campus demographics and the demographics reported by parents who responded to the survey from your campus. The next section describes the percentage of parents selecting specific responses for each survey item, and the final section indicates the actual number of parents who selected each response option. Campus survey results should be examined for areas of strength and opportunities for improvement. Results for all AISD schools at your level are presented to provide a reference for comparison.

How many parents responded to the survey in 2003-2004 and 2004-2005, and how does this compare to the number of students in the population each year?

	Campus	District EL	District MS	District HS
# of Parents Responding in 2003-2004	31	16,070	2,721	1,640
# of Students in 2003-2004	1,656	42,594	15,819	19,847
<i>Ratio of Parent Respondents to Students, 2003-04</i>	<i>1.9%</i>	<i>37.7 %</i>	<i>17.2 %</i>	<i>8.3 %</i>
# of Parents Responding in 2004-2005	58	12,137	2,007	2,700
# of Students in 2004-2005	1,638	43,566	15,705	19,976
<i>Ratio of Parent Respondents to Students in 2004-05</i>	<i>3.5%</i>	<i>27.9 %</i>	<i>12.8 %</i>	<i>13.5 %</i>

Note: The ratio of parent respondents to students is listed above as a percentage for ease of interpretation; however, it is the number of parents who responded per 100 students enrolled.

What did parents report as their child's ethnicity, and how does this compare to the ethnic distribution of the student population?

Ethnicity	% of Students, as Reported by Parent Respondents	% of Students in Campus Population
African American	20.4%	30.9%
Asian	3.7%	6.2%
Hispanic	14.8%	32.7%
Native American	1.9%	0.2%
White	59.3%	30.0%



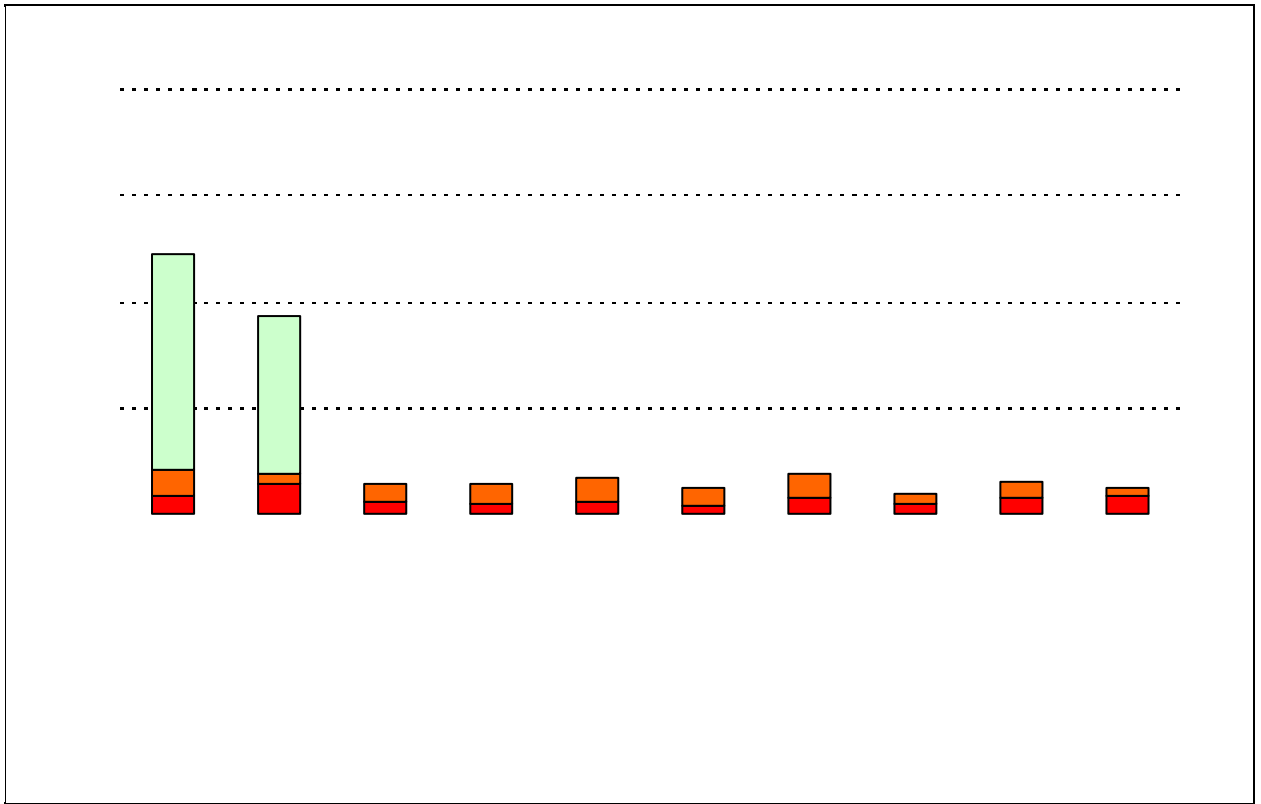
2004-2005 AISD Parent Survey Item Responses

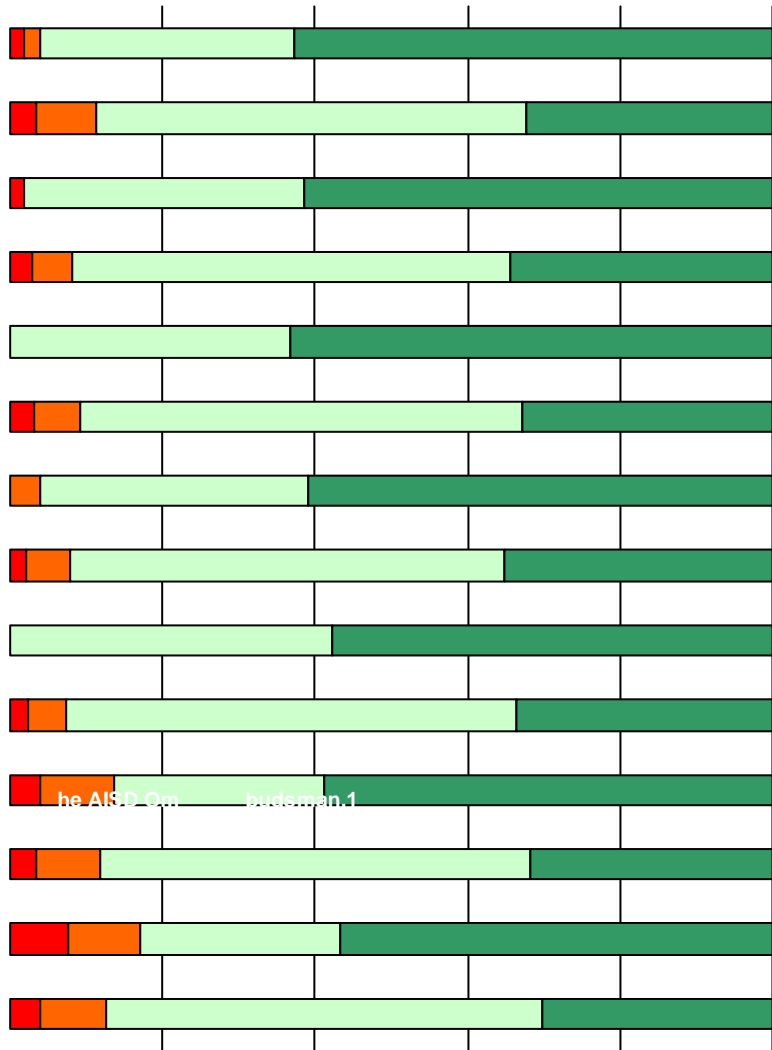
Each survey item is presented below, followed by a bar graph containing results for your campus and for all campuses at your level.

Please examine the results below to determine areas of strength and opportunities for improvement. Large percentages of "Strongly Agree" and "Agree" indicate areas in which your campus staff excel, and large percentages of "Disagree" and "Strongly Disagree" indicate areas for possible improvement.

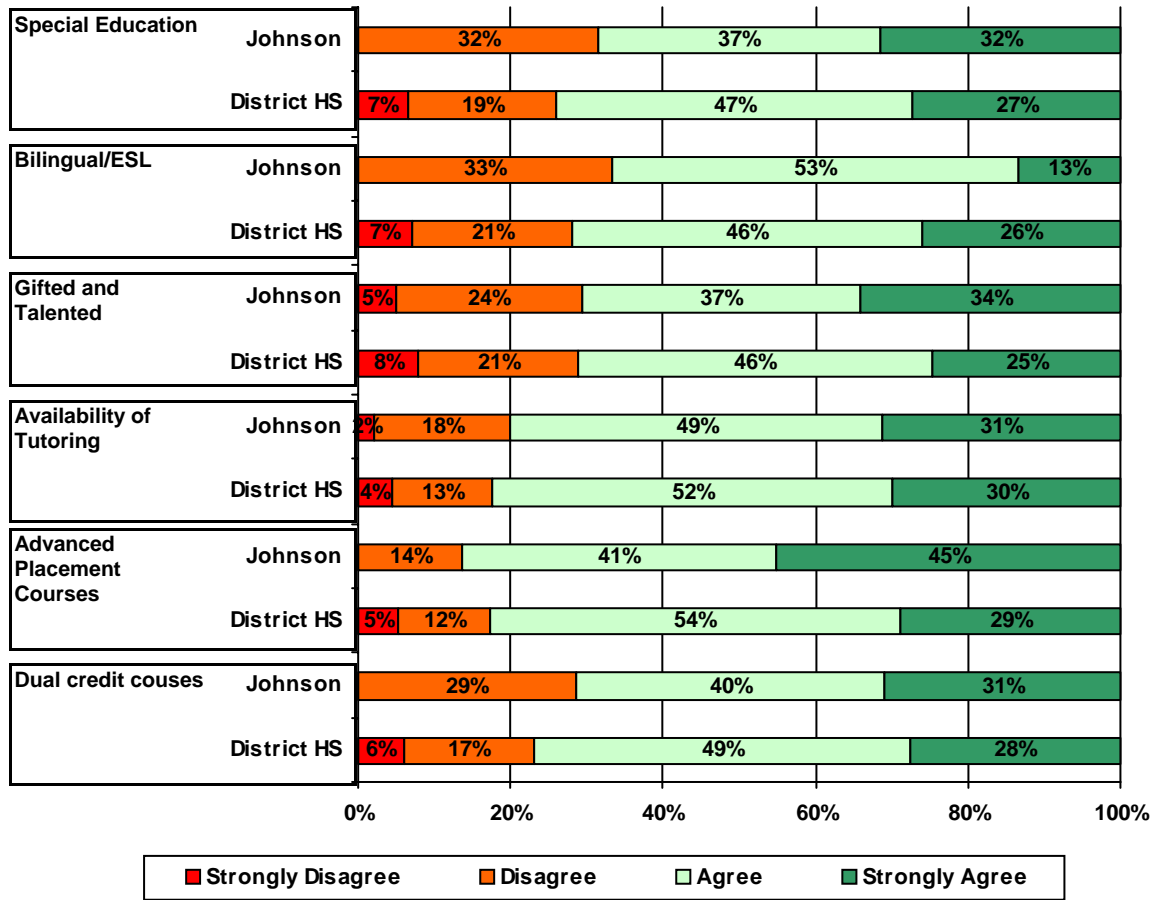
In addition, please compare the percentage of parents from your campus selecting each response option with the percentage of all AISD parents selecting each response option. If your campus percentages are very different from the percentages reported districtwide, please consider potential reasons for discrepancies.

Please also review the results below for staff categories with consistently positive or negative responses. These responses may be used to identify opportunities for praise and areas for professional development.

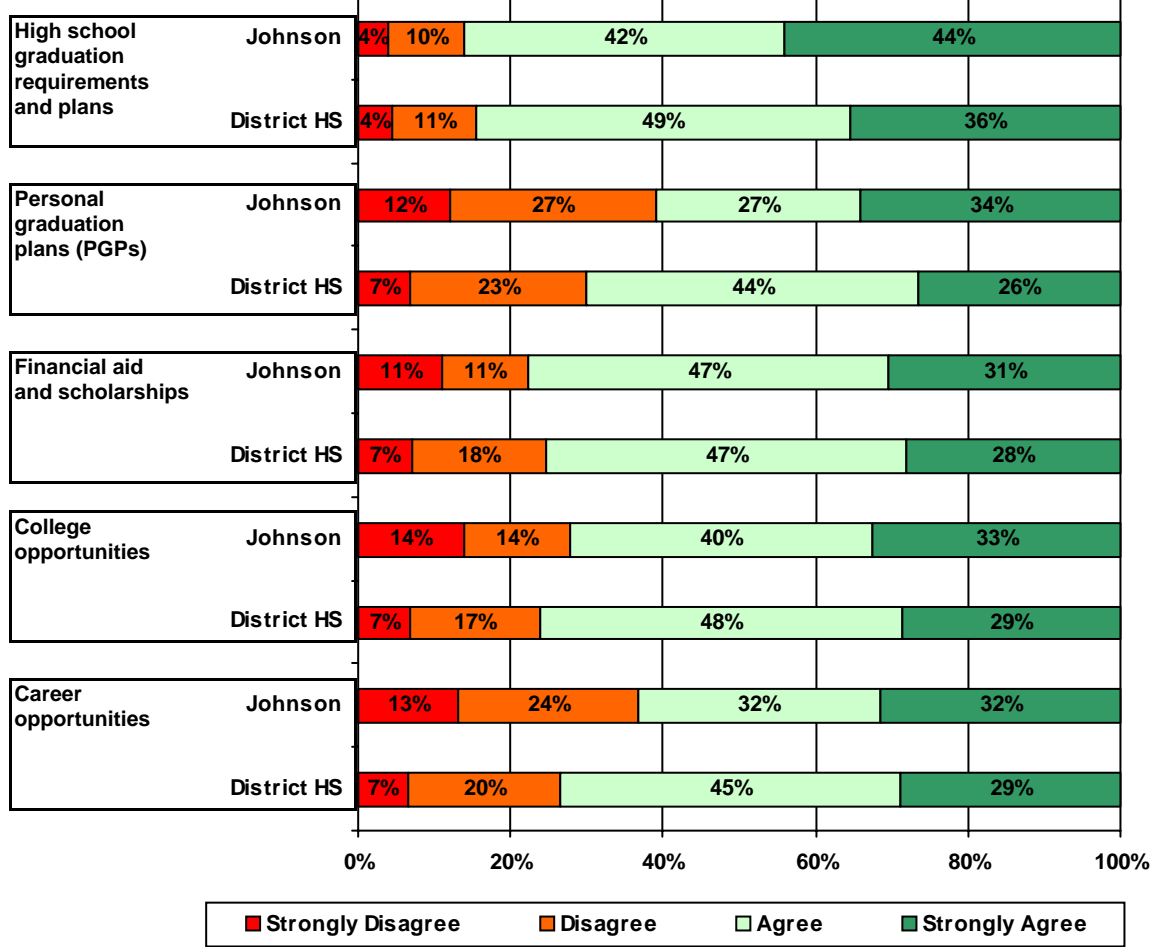




12. School staff provided me with information about the following programs:



14. School staff provided me with the following graduation and post-graduation information:



Number of Johnson High School Parent Responses, by Response Option (Continued)

		Strongly Agree	Agree	Disagree	Strongly Disagree	Does Not Apply	Don't Know
11a.	n = 53	32	17	1	1	0	2
11b.	n = 52	32	19	0	1	0	0
11c.	n = 52	31	18	0	0	2	1
11d.	n = 52	31	18	2	0	0	1
11e.	n = 0	0	0	0	0	0	0
11f.	n = 0	0	0	0	0	0	0
11g.	n = 52	30	22	0	0	0	0
12a.	n = 50	6	7	6	0	26	5
12b.	n = 51	2	8	5	0	27	9
12c.	n = 52	14	15	10	2	8	3
12d.	n = 50	14	22	8	1	4	3
13a.	n = 52	24	22	4	2	0	0
13b.	n = 52	16	12	14	5	0	5
13c.	n = 52	16	13	10	6	3	4
13d.	n = 53	16	19	8	1	8	1
13e.	n = 53	16	18	6	2	10	1

*This item included an additional response option, 'I am not aware of AISD's academic benchmark testing.' An additional 2 parents selected this option.