

Johnston High School

How many parents responded to the survey in 2005-2006 and 2006-2007, and how does this compare to the number of students in the population each year?

	Campus	District EL	District MS	District HS
	49			
	1,015			
	4.8%			
	14			
	713			
	2%			

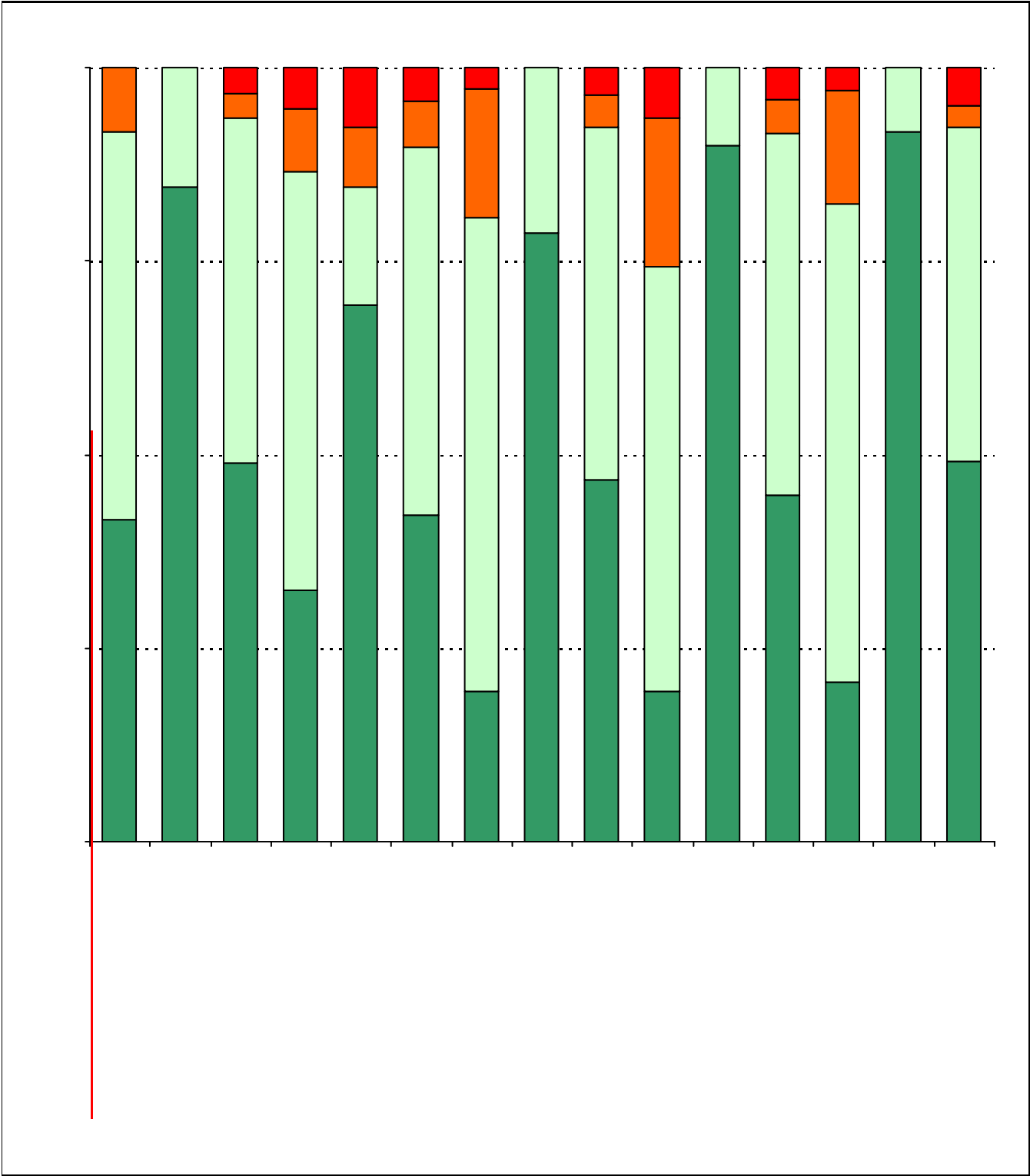
What did parents report as their child's ethnicity

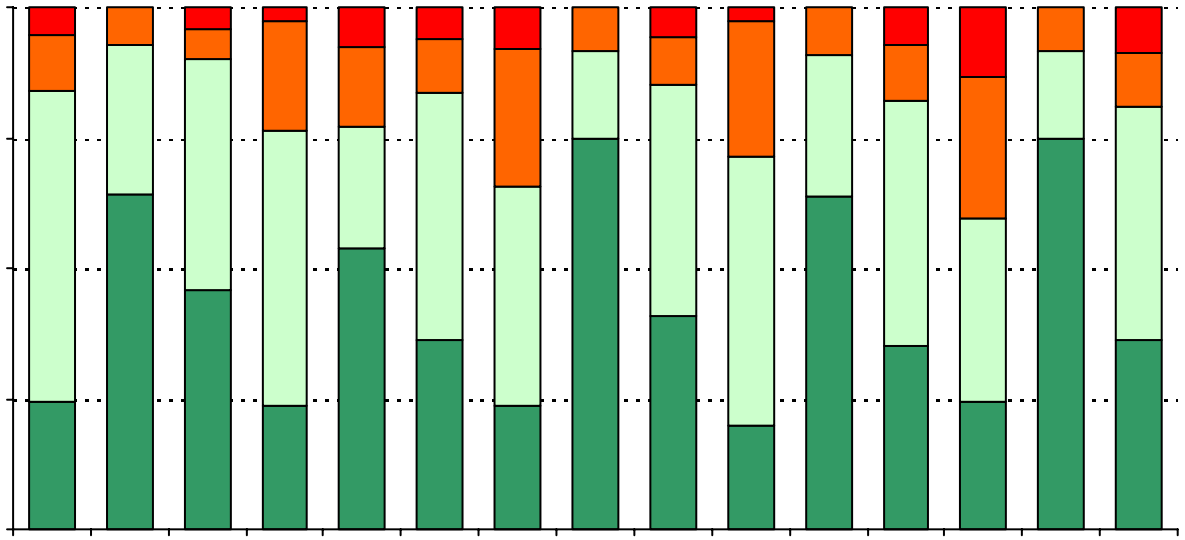
Ethnicity	% of Students, as Reported by Campus Parent Respondents	% of Students in Campus Population
	14.3%	
	0.0%	
	78.6%	
Native American	0.0%	0.0%
White	7.1%	2.0%

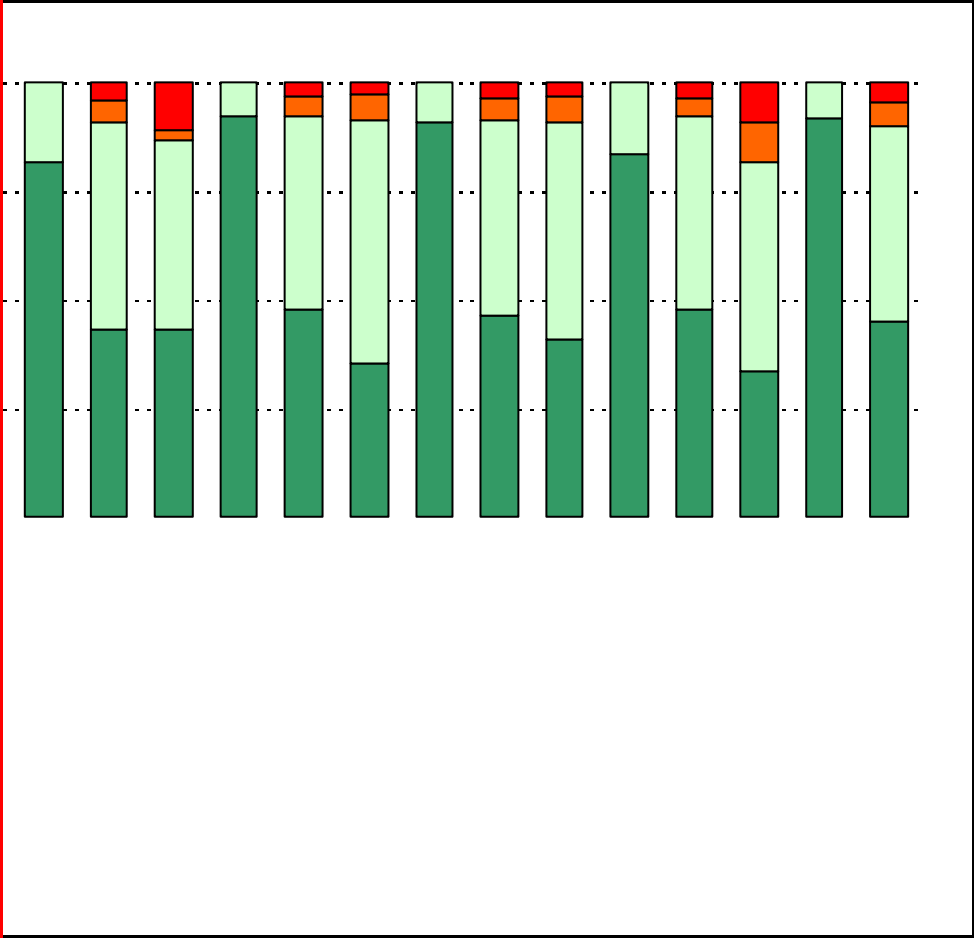
**% of Students, as
Reported by Campus**



USING THE RESULTS OF THE AISD PARENT SURVEY

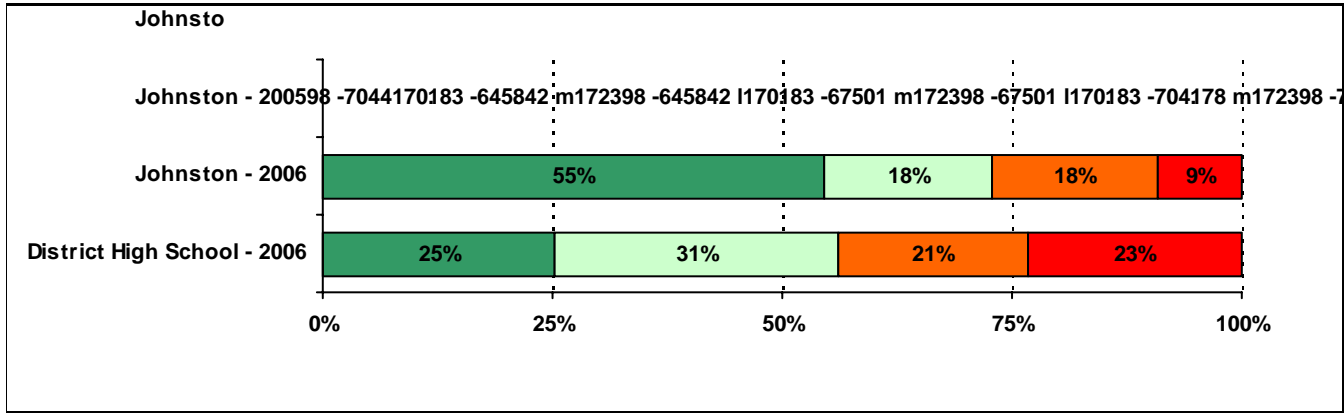


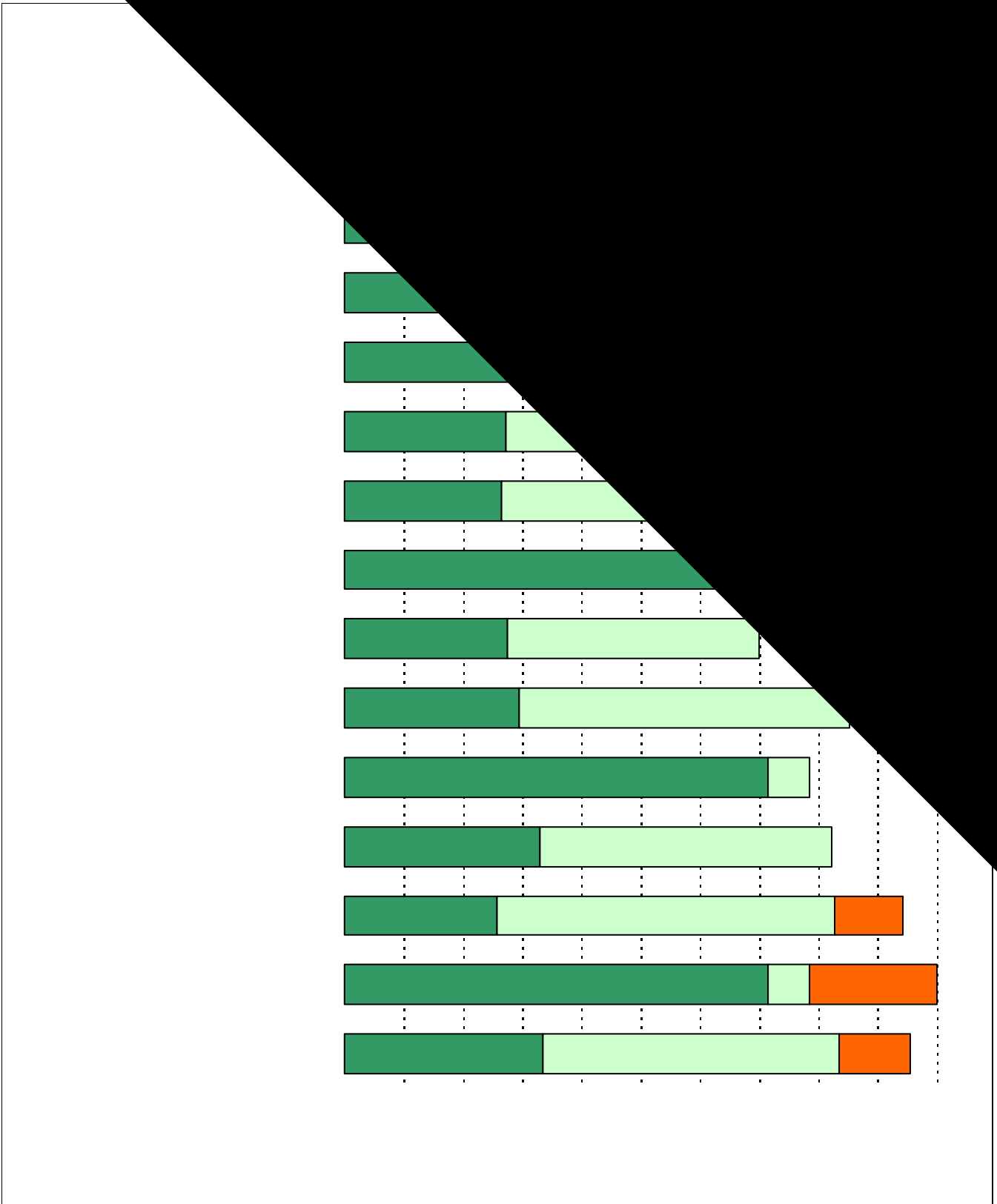




29%59%13%

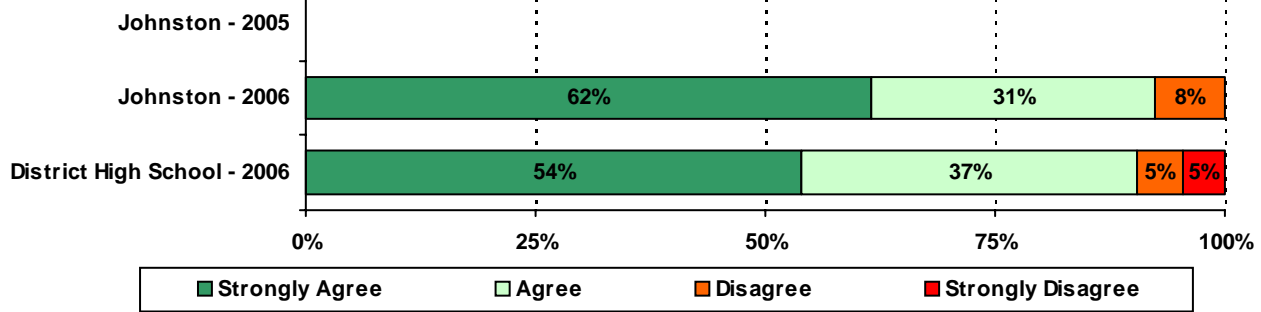
64%18%42%



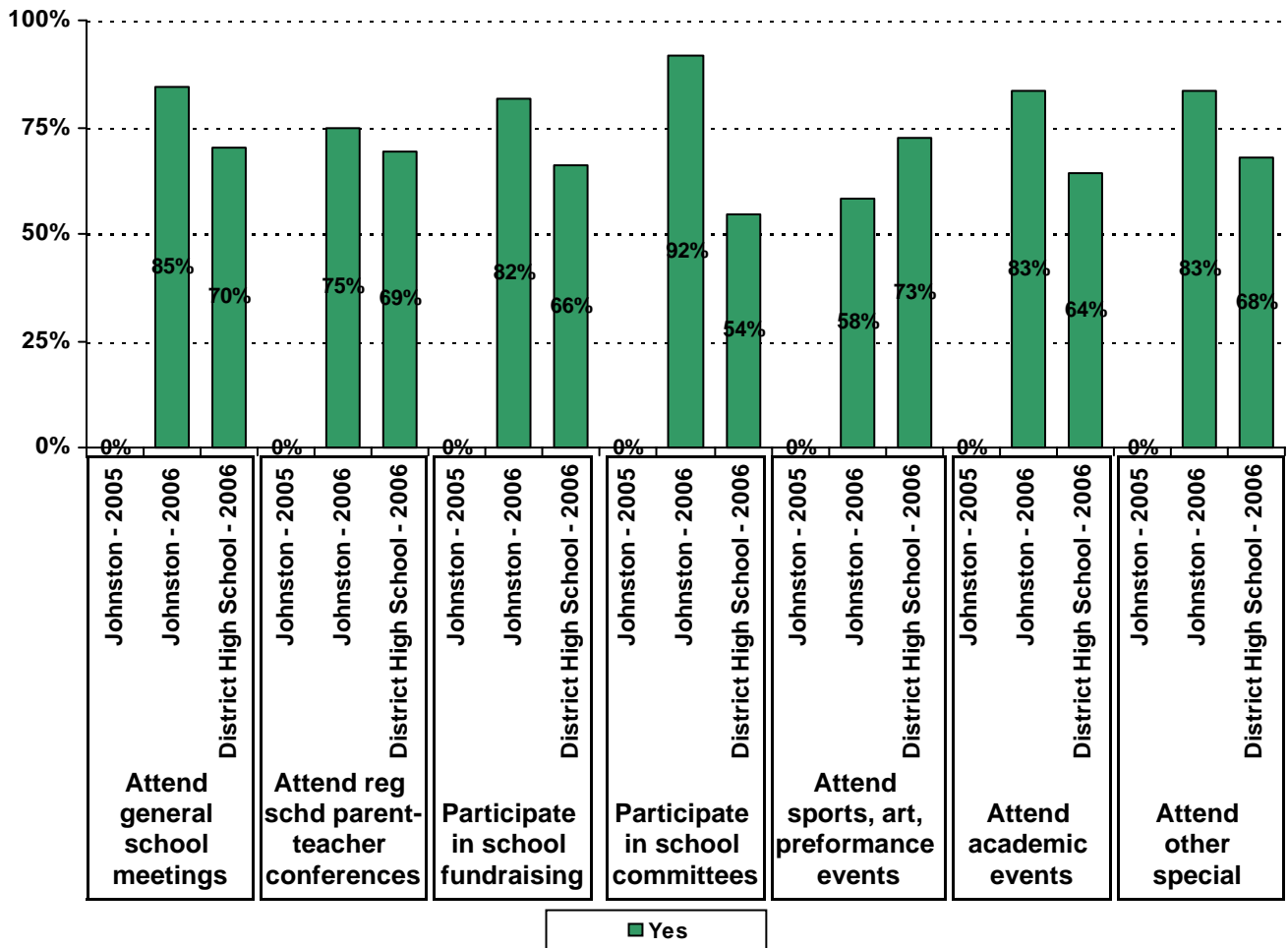


Required

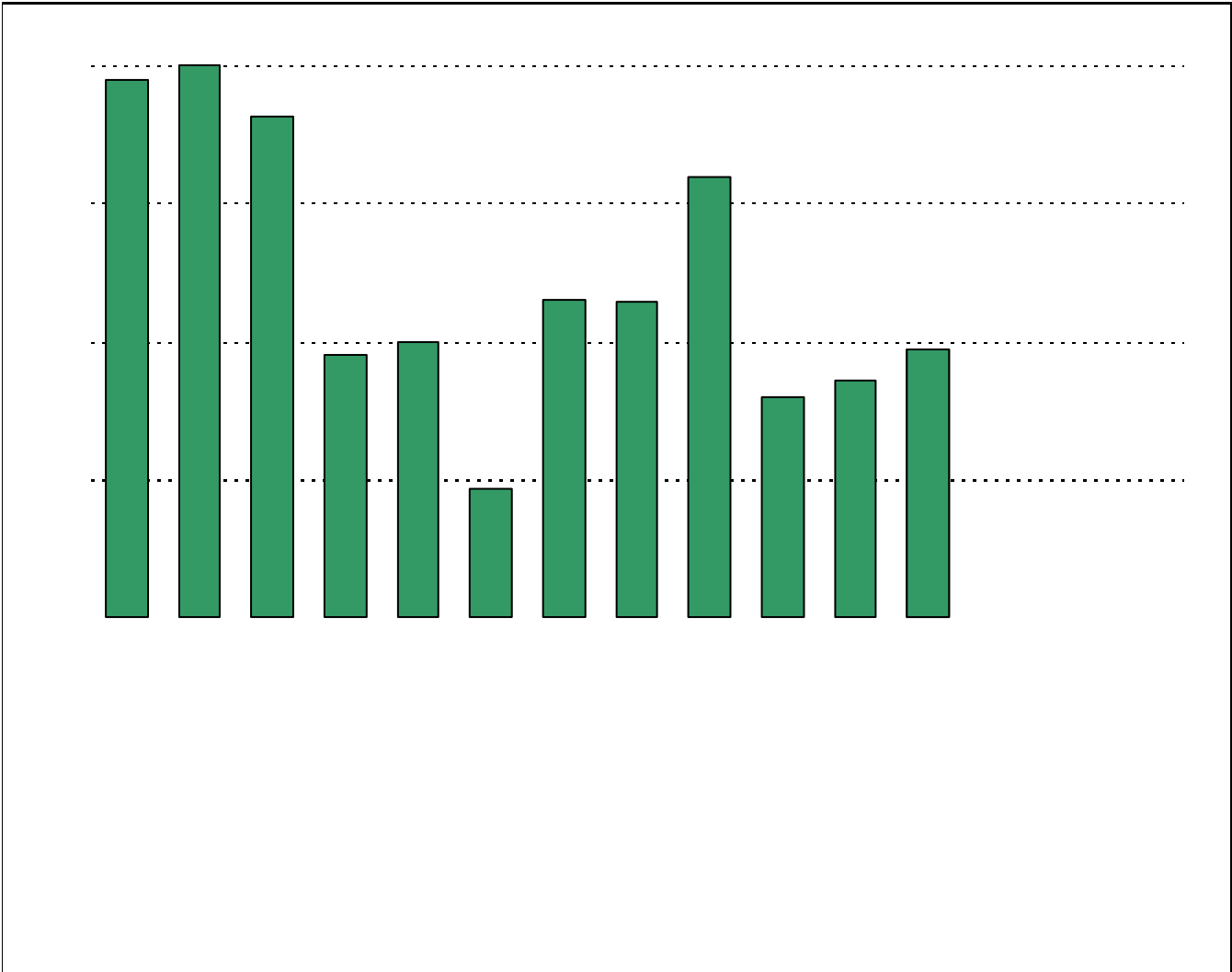
17. School staff provide me with information in my home language.*



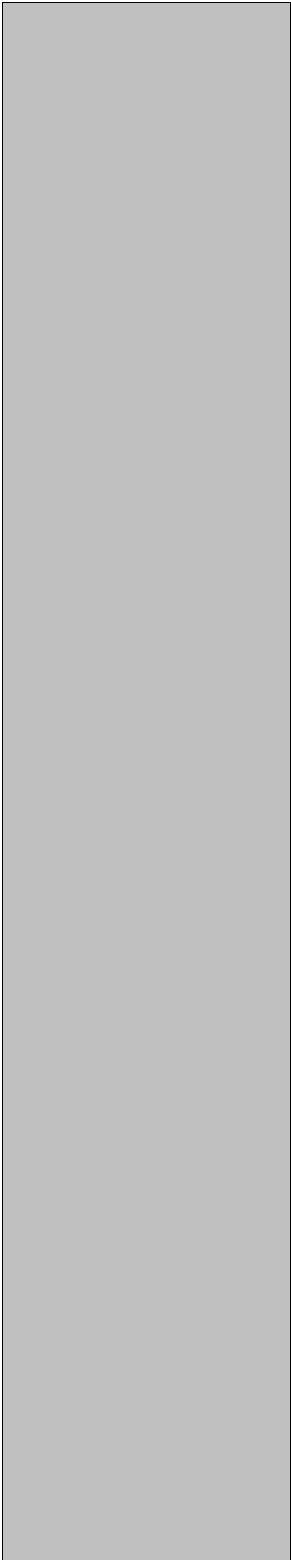
19. Which of the following activities do you participate in at your child's school:*



* Item(s) #17, #18, #19 added to the survey in 2006



	Strongly Agree	Agree	Disagree	Strongly Disagree	Don't Know/NA
--	-----------------------	--------------	-----------------	--------------------------	----------------------



	11	1	0	0	2
--	----	---	---	---	---

Number of Johnston High School Parent Responses, by Response Option
(Continued)

		Strongly Agree	Agree	Disagree	Strongly Disagree	Don't Know/NA
13a.	n = 14	10	2	1	1	0
13b.	n = 13	9	2	1	1	0
13c.	n = 13	9	2	2	0	0
14a.	n = 14	9	3	2	0	0
14b.	n = 14	9	1	4	0	0
14c.	n = 14	7	2	3	0	2
15a.	n = 14	11	1	2	0	0
15b.	n = 14	11	0	3	0	0
15c.	n = 13	9	1	2	1	0
15d.	n = 14	10	1	2	1	0
15e.	n = 14	10	1	3	0	0
16a.	n = 14	9	2	3	0	0
16b.	n = 14	8	3	3	0	0
16c.	n = 14	6	4	3	1	0
16d.	n = 14	8	2	3	1	0
16e.	n = 14	8	2	3	1	0
17.	n = 14	8	4	1	0	1
18.	n = 14	5	5	3	0	1
		Yes	No			
19a.	n = 14	11	3			
19b.	n = 14	9	5			
19c.	n = 13	9	4			
19d.	n = 14	11	3			
19e.	n = 14	7	7			
19f.	n = 14	10	4			
19g.	n = 14	10	4			
20.	n = 14	<p><i>Item 20 did not use the "Strongly Agree" to "Strongly Disagree" scale. Numbers below reflect the number of parents selecting each goal. These numbers will not sum to the total number of item respondents because parents may select multiple goals.</i></p>				
		High School diploma	Certificate/ Associates degree	Bachelors degree	Graduate/ Professional degree	Military service
		14	7	8	6	0