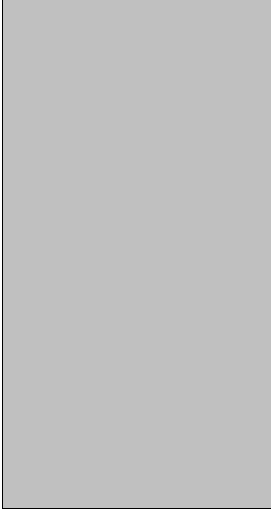
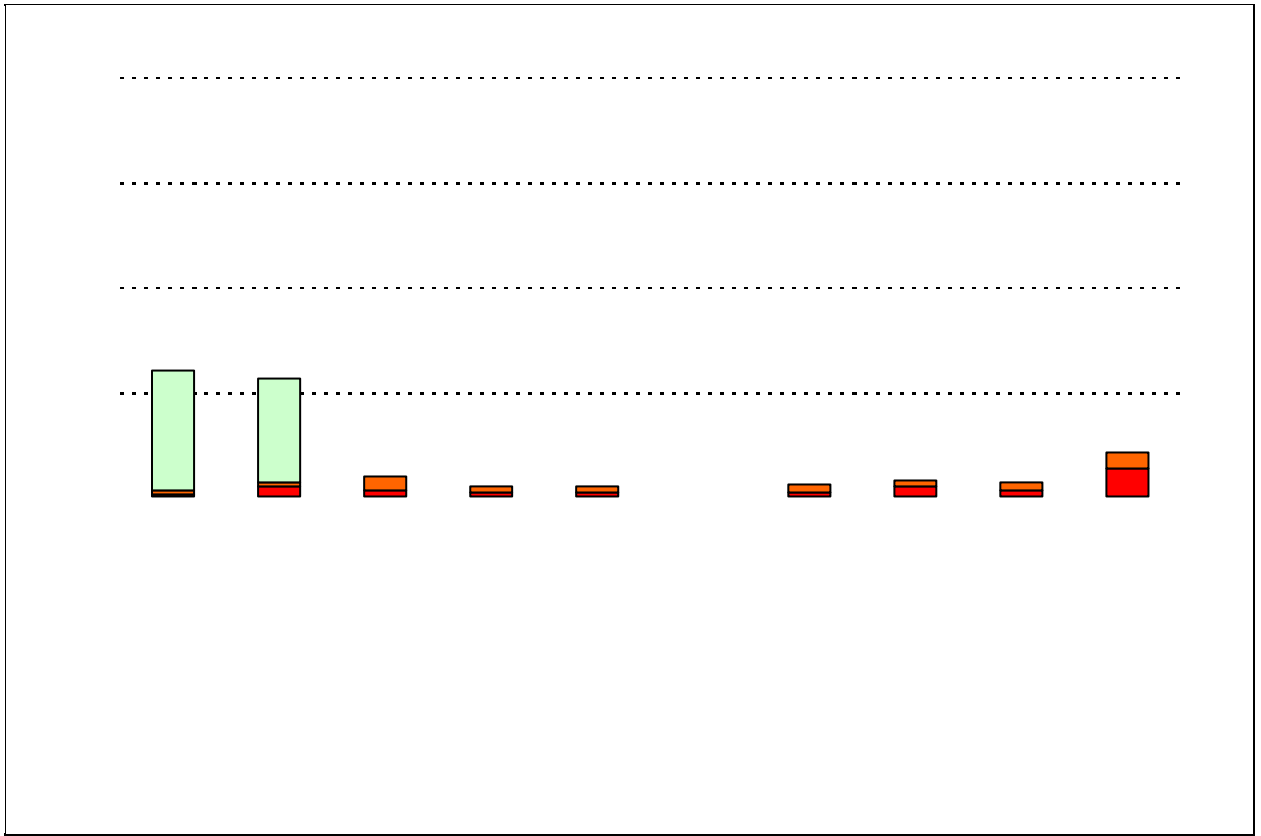


	Campus	District EL	District MS	District HS
# of Parents Responding in 2003-2004	122	16,070	2,721	1,640
# of Students in 2003-2004	400	42,594	15,819	19,847
<i>Ratio of Parent Respondents to Students, 2003-04</i>	30.5%	37.7 %	17.2 %	8.3 %
# of Parents Responding in 2004-2005	102	12,137	2,007	2,700
# of Students in 2004-2005	376	43,566	15,705	19,976
<i>Ratio of Parent Respondents to Students in 2004-05</i>	27.1%	27.9 %	12.8 %	13.5 %

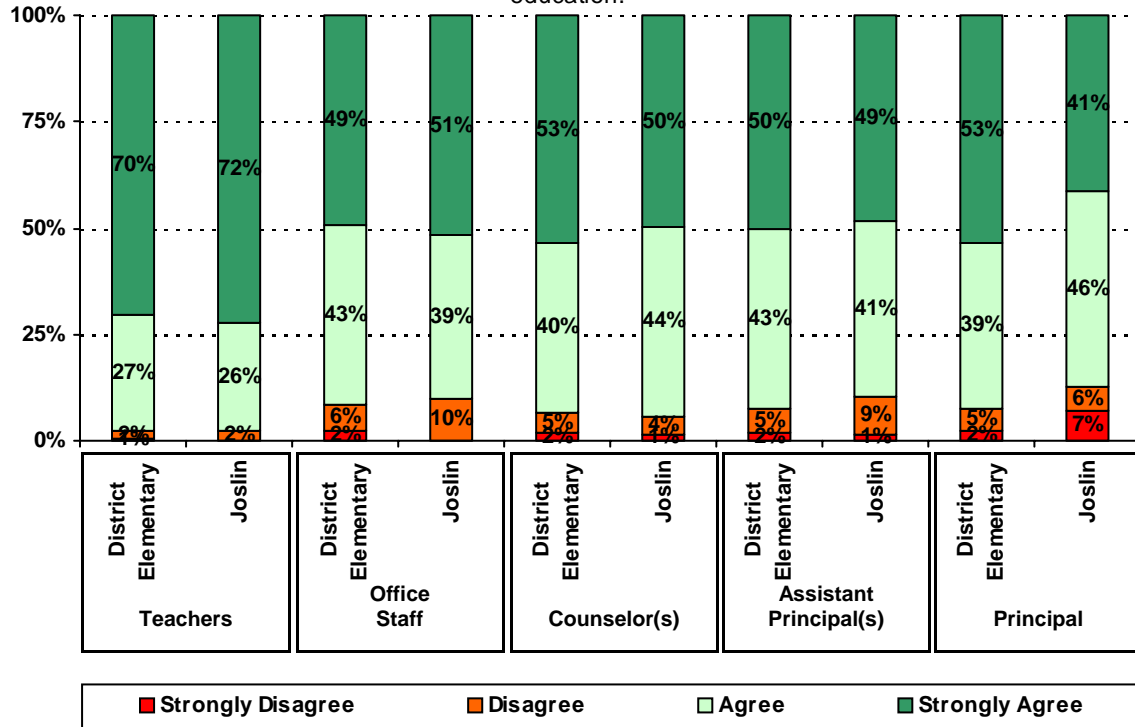
**% of Students, as
Reported by Parent
Respondents**

% of Students in

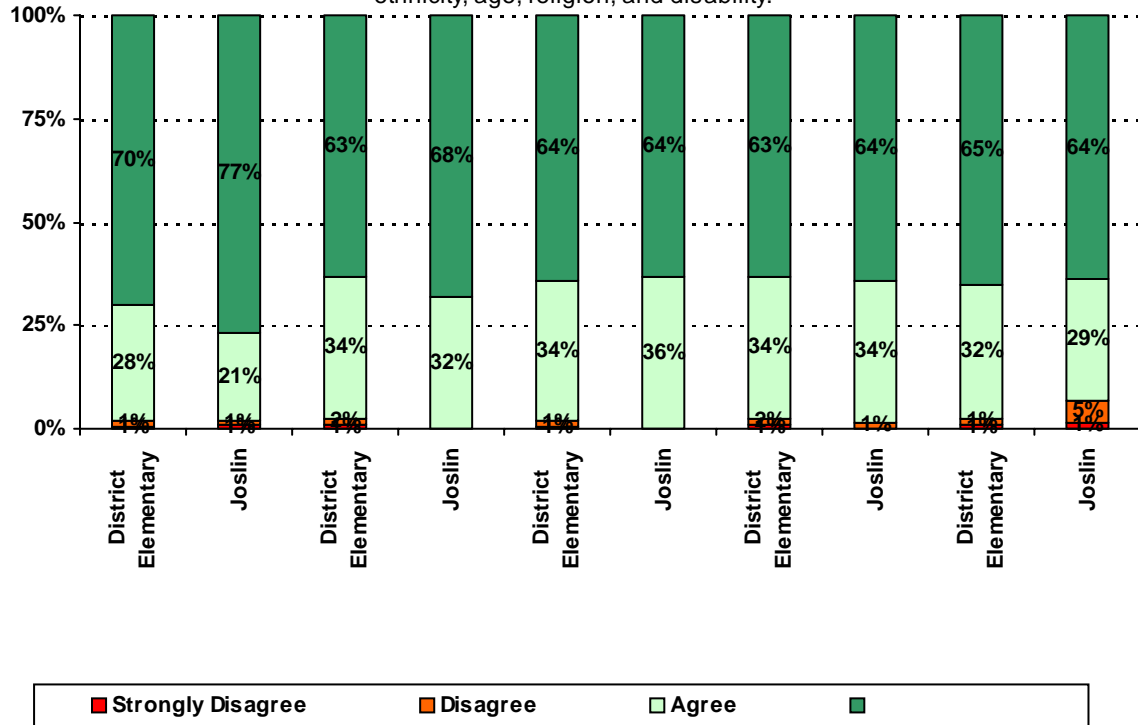




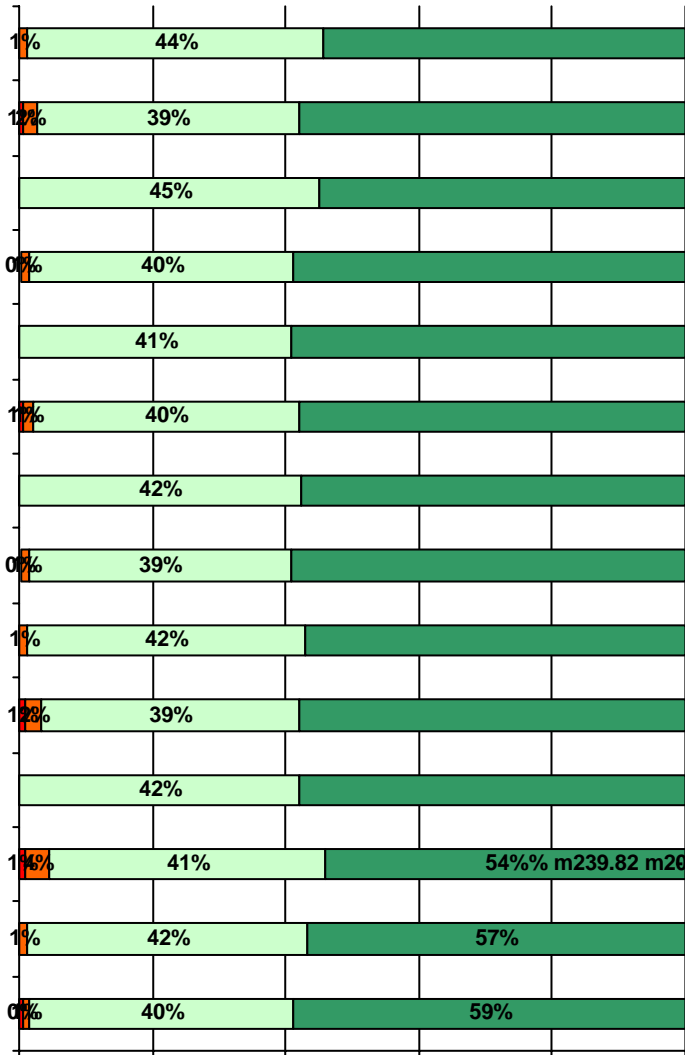
5. The following school staff have helped me to become more involved in my child's education.



7. The following school staff treat my child fairly with respect to culture, gender, ethnicity, age, religion, and disability.

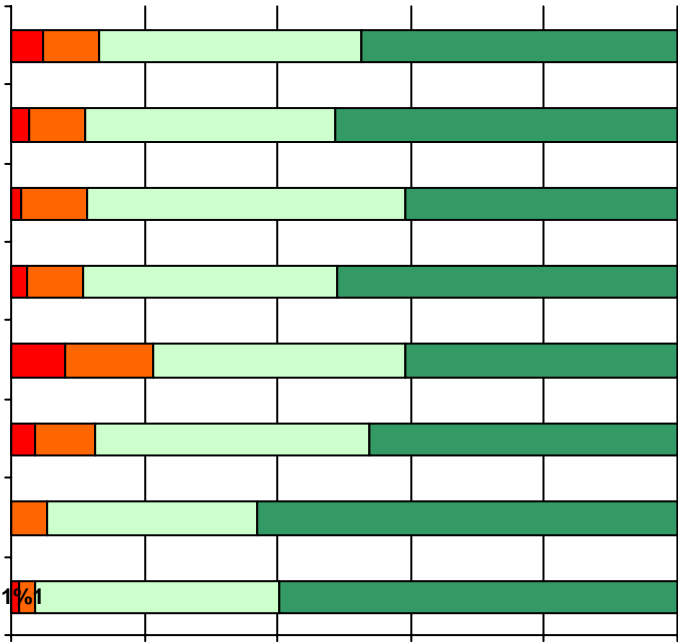


11. School staff provided me with information about the following school and district policies:



54% m239.82 m20.4516510 308.03647.3 TD31%9m

12. School staff provided me with information about the following programs:



Item Response Details

Number of Joslin Elementary School Parent Responses, by Response Option

		Strongly Agree	Agree	Disagree	Strongly Disagree	Does Not Apply	Don't Know
3a.	n = 96	40	29	3	5	3	16
3b.	n = 95	45	31	1	2	1	15
3c.	n = 94	43	27	0	0	5	19
3d.	n = 96	62	23	1	1	2	7
3e.	n = 95	66	23	1	2	1	2
4a.	n = 92	36	29	4	4	1	18
4b.	n = 92	43	24	2	1	3	19
4c.	n = 93	41	31	1	1	2	17
4d.	n = 92	43	34	1	1	2	11
4e.	n = 94	59	28	0	1	1	5
5a.	n = 93	29	32	4	5	7	16
5b.	n = 93	33	28	6	1	7	18
5c.	n = 94	35	31	3	1	8	16
5d.	n = 95	36	27	7	0	11	14
5e.	n = 95	62	22	2	0	6	3
6a.	n = 92	35	23	5	3	5	21
6b.	n = 92	36	22	6	1	6	21
6c.	n = 92	32	31	3	1	7	18
6d.	n = 89	32	23	7	0	10	17
6e.	n = 94	57	20	3	2	2	10
7a.	n = 93	48	22	4	1	1	17
7b.	n = 94	49	26	1	0	2	16
7c.	n = 92	47	27	0	0	2	16
7d.	n = 92	56	26	0	0	1	9
7e.	n = 98	72	20	1	1	1	3
*8.	n = 91	31	32	6	5	4	7
9.	n = 99	51	43	2	1	1	1
10.	n = 96	17	14	2	8	2	53

Number of Joslin Elementary School Parent Responses, by Response Option (Continued)

		Strongly Agree	Agree	Disagree	Strongly Disagree	Does Not Apply	Don't Know
11a.	n = 93	44	36	1	0	5	7
11b.	n = 94	49	40	0	0	2	3
11c.	n = 91	49	34	0	0	3	5
11d.	n = 95	52	38	0	0	3	2
11e.	n = 91	44	32	1	0	4	10
11f.	n = 88	43	31	0	0	2	12
11g.	n = 93	50	37	1	0	1	4
12a.	n = 92	29	24	5	3	18	13
12b.	n = 92	25	29	6	1	22	9
12c.	n = 92	25	23	8	5	15	16
12d.	n = 92	12	6	1	0	2	5
13a.	n = 97	62	30	2	1	1	1
13b.	n = 94	49	31	5	1	3	5
13c.	n = 92	44	29	3	1	7	8
13d.	n = 92	48	25	5	0	7	7
13e.	n = 94	58	32	2	0	1	1

*This item included an additional response option, 'I am not aware of AISD's academic benchmark testing.' An additional 6 parents selected this option.