



2006-2007 AISD Parent Survey Results

The following report contains the results of the 2006-2007 AISD Parent Survey for your campus and all AISD schools at your level. The first section of this report provides a comparison of the campus demographics and the demographics reported by parents who responded to the survey from your campus. The next section describes the percentages of parents selecting specific responses for by some campuses than others.

How many parents responded to the survey in 2005-2006 and 2006-2007, and how does this compare to the number of students in the population each year?

	Campus	District EL	District MS	District HS
# of Parents Responding in 2005-2006		12,137	2,007	2,700
# of Students in 2005-2006	0	44,827	15,624	20,081
<i>Ratio of Parent Respondents to Students, 2005-2006</i>		24.3%	11.5%	10.4%
# of Parents Responding in 2006-2007	122	11,812	1,354	1,426
# of Students in 2006-2007	770	45,431	15,790	20,279
<i>Ratio of Parent Respondents to Students, 2006-2007</i>		15.3%	26%	8.6%
		9.3%		7%
		22.9%		
		1.7%		
		50.8%		

What did parents report as their child's ethnicity, and how does this compare to the ethnic distribution of the student population?

African American	7.3%
Asian	10.5%
Hispanic	25.3%

What did parents report as their child's grade, and how does this compare to the grade level distribution of the student population?

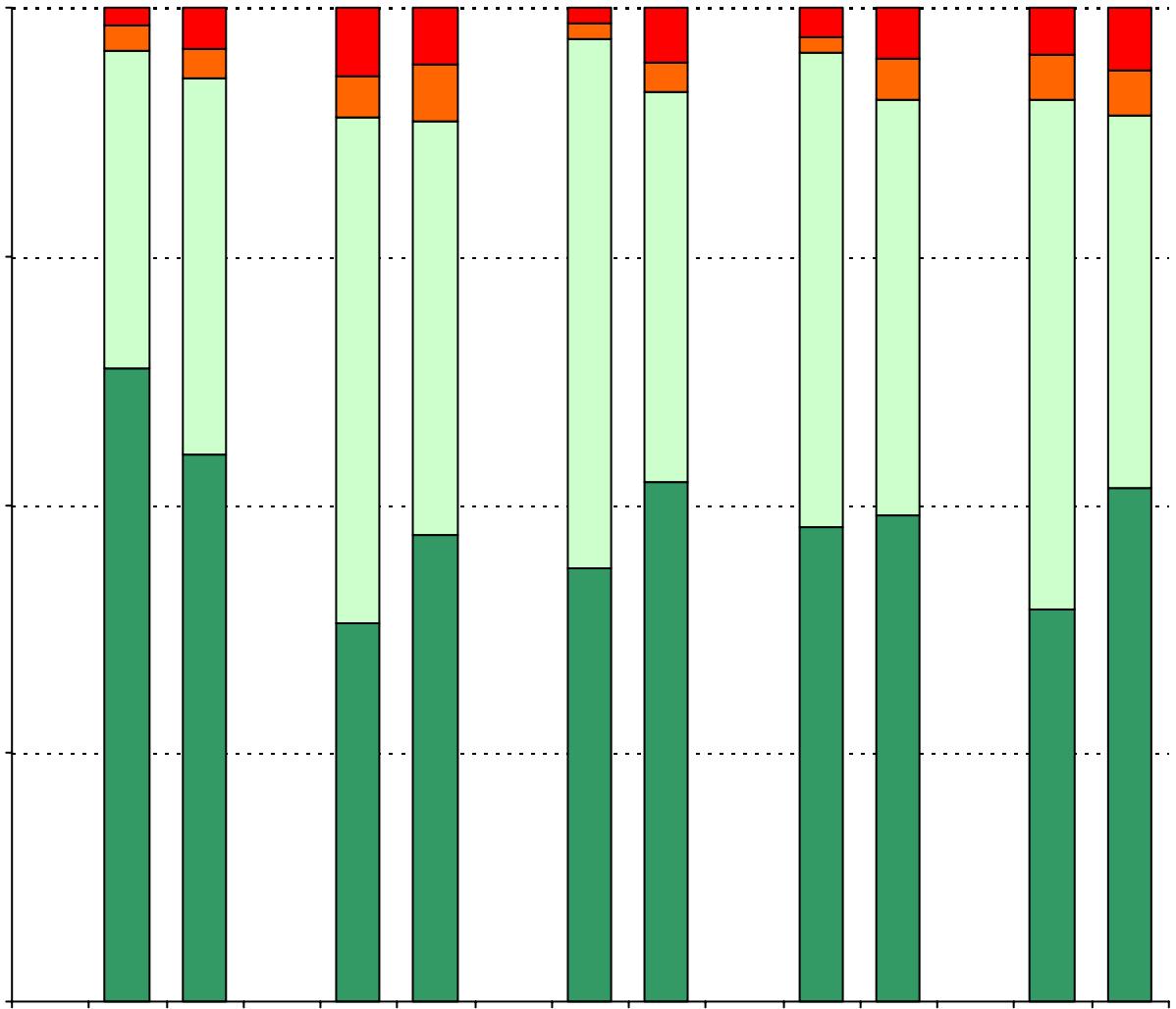
Grade	% of Students, as Reported by Campus Parent Respondents	% of Students in Campus Population
6th	61.2%	32.1%
7th	27.3%	37.3%
8th	11.6%	30.6%
9th	N/A	N/A
10th	N/A	N/A
11th	N/A	N/A
12th	N/A	N/A

Note: Student population data are based on Fall PEIMS data submitted by the district to TEA, and may differ from the official AEIS report.

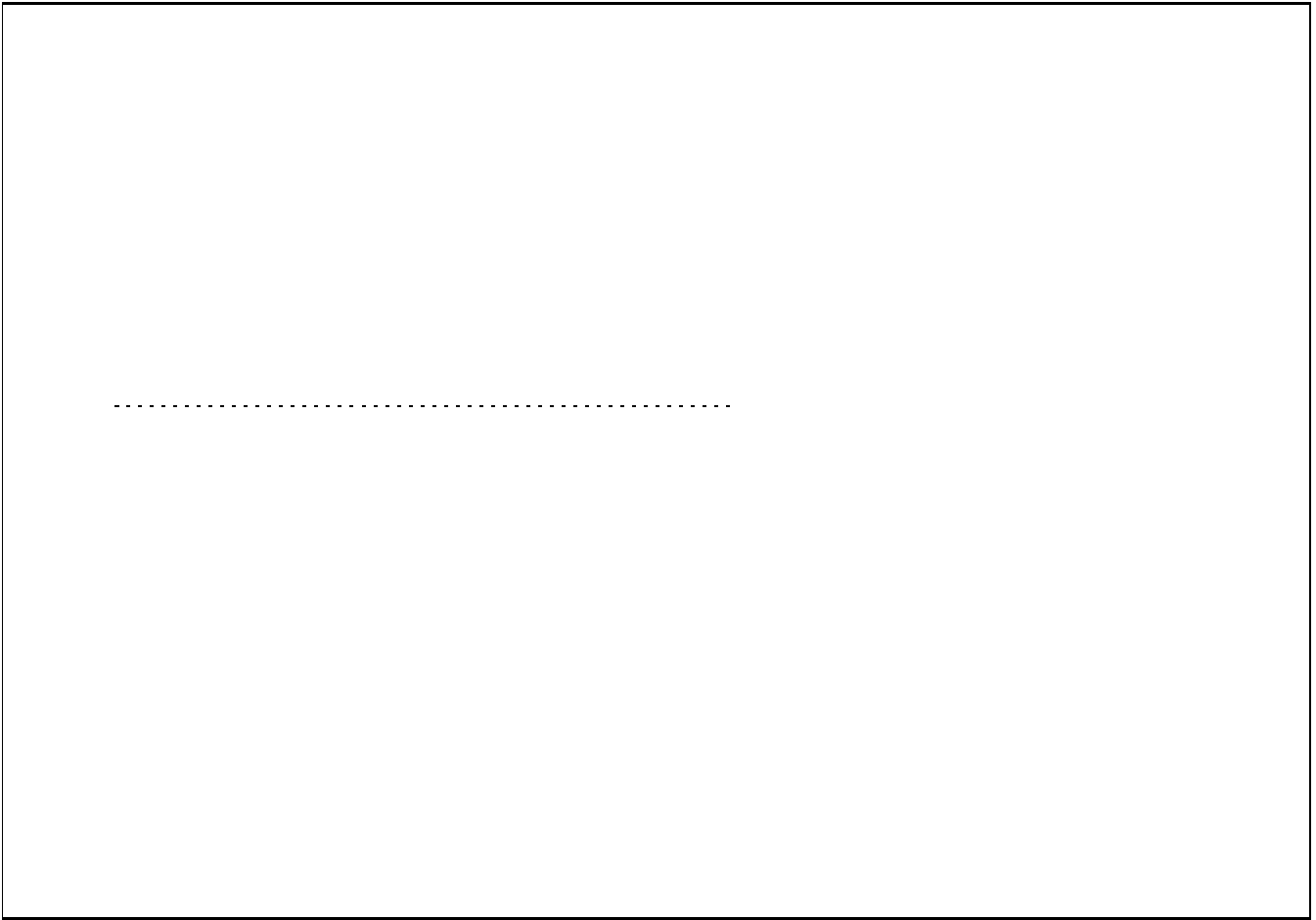
USING THE RESULTS OF THE AISD PARENT SURVEY

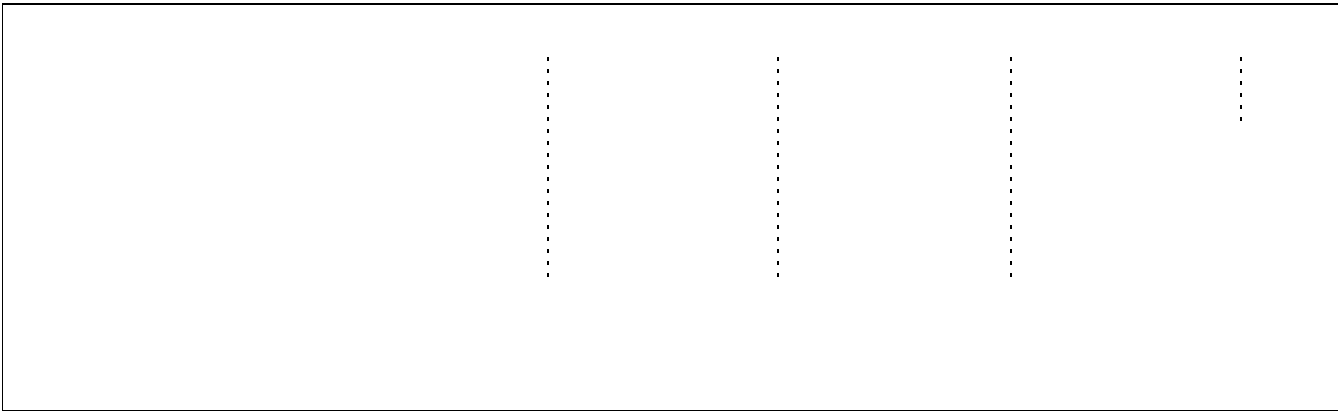
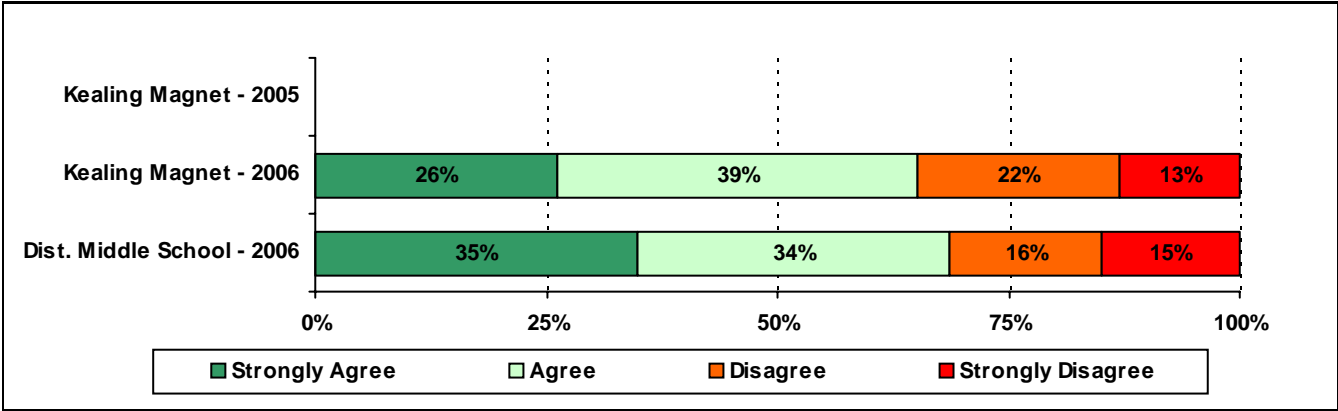
Each survey item is presented below, followed by a bar graph containing your school's results for

38% 42% 39% 28% 33% 31% 35%

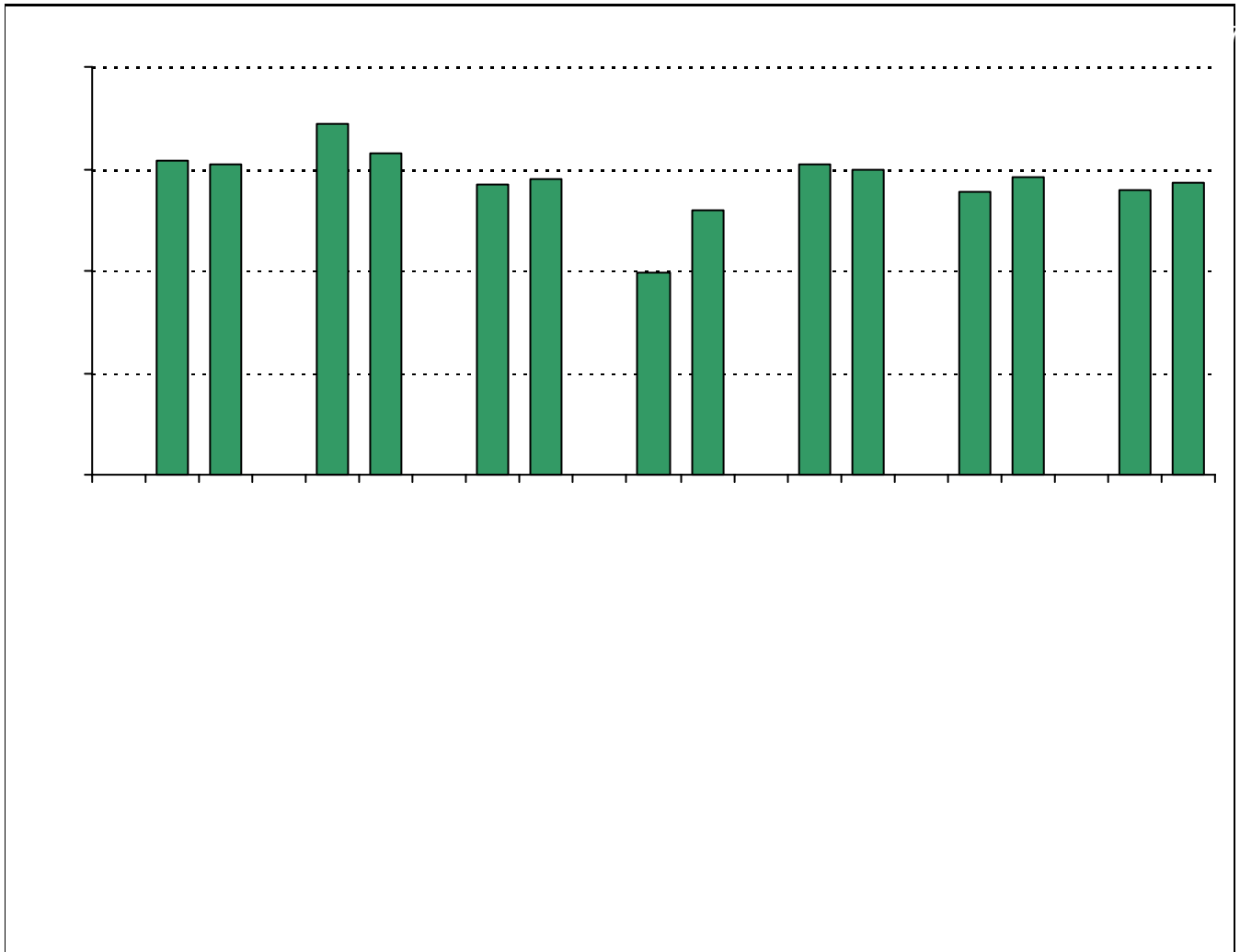


A rectangular box with a solid black border. Inside the box, there are four horizontal dotted lines, evenly spaced, intended for writing text.

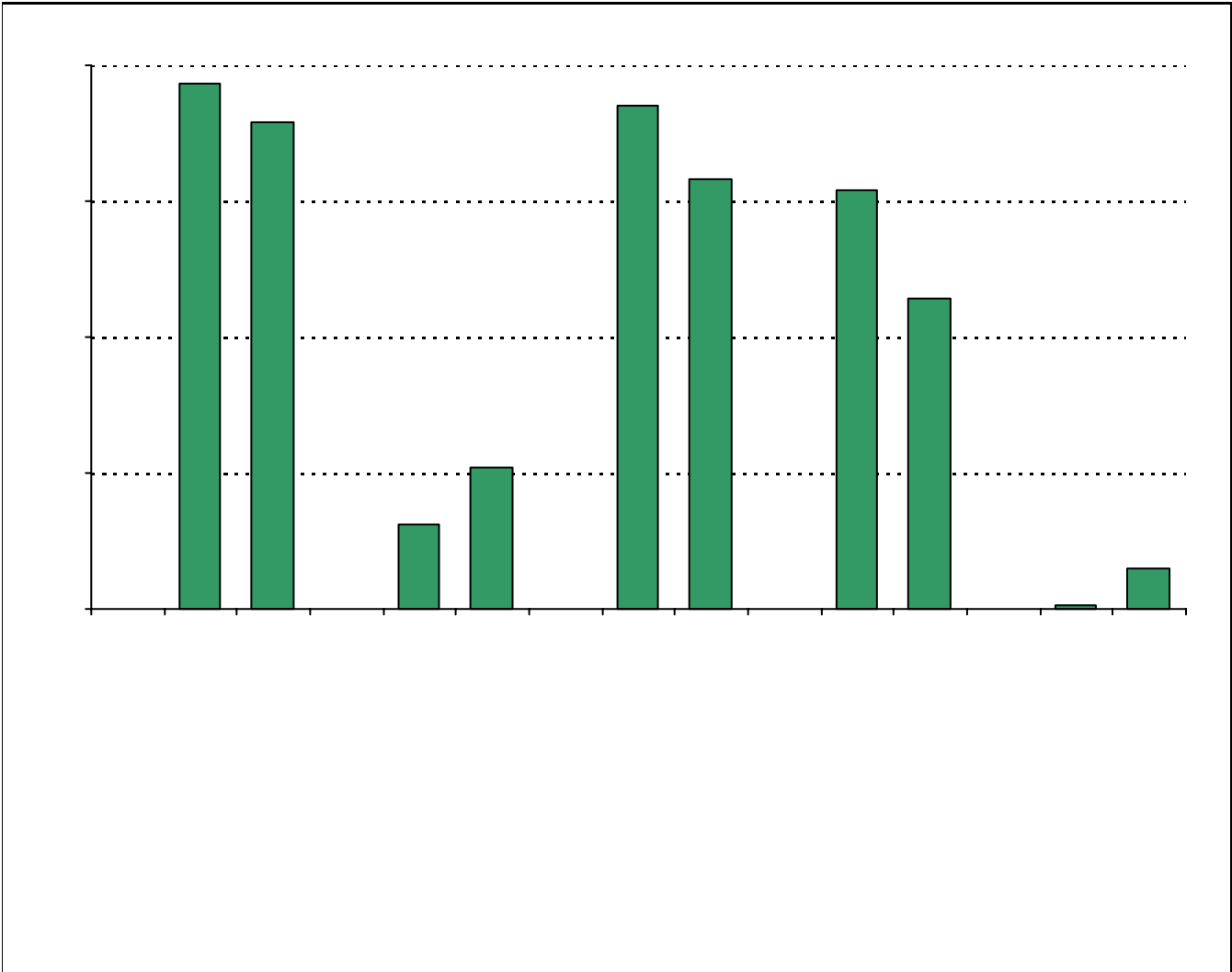








* Item(s) #17, #18, #19 added to the survey in 2006



Item Response Details

Number of Kealing Middle School Parent Responses, by Response Option

		Strongly Agree	Agree	Disagree	Strongly Disagree	Don't Know/NA
4a.	n = 117	28	43	4	8	34
4b.	n = 118	18	40	5	3	52
3c.	n = 117	19	37	2	3	
3d.	n = 116	38	51	4	7	16
3e.	n = 118	72	36	3	2	5
6a.	n = 117	28	43	4	8	34
6b.	n = 118	18	40	5	3	52
6c.	n = 118	19	37	2	3	57
6d.	n = 116	23	43	3	6	41
6e.	n = 119	68	41	2	4	4
7a.	n = 117	19	34	14	10	40
7b.	n = 116	16	27	18	3	52
7c.	n = 116	12	27	15	2	60
7d.	n = 116	7	33	14	6	56
7e.	n = 118	56	36	9	3	14
8a.	n = 117	18	26	2	6	65
8b.	n = 118	15	26	3	1	73
8c.	n = 117	13	31	2	1	70
8d.	n = 116	11	27	3	2	73
8e.	n = 119	58	31	4	2	24
9a.	n = 116	36	41	4	2	33
9b.	n = 117	35	39	3	2	38
9c.	n = 117	36	40	2	1	38
9d.	n = 116	37	45	3	2	29
9e.	n = 119	60	42	2	4	11

Number of Kealing Middle School Parent Responses, by Response Option
(Continued)

		Strongly Agree	Agree	Disagree	Strongly Disagree	Don't Know/NA
13a.	n = 120	51	54	6	4	5
13b.	n = 117	42	53	13	3	6
13c.	n = 117	37	43	14	10	13
14a.	n = 119	45	46	11	4	13
14b.	n = 121	53	49	7	5	7
14c.	n = 119	33	41	11	3	31
15a.	n = 120	57	50	8	4	1
15b.	n = 118	24	32	25	4	33
15c.	n = 120	28	42	16	4	30
15d.	n = 118	32	40	11	3	32
15e.	n = 118	31	43	16	4	24
16a.	n = 120	12	22	16	7	63
16b.	n = 119	8	16	20	8	67
16c.	n = 119	8	15	18	9	69
16d.	n = 119	10	14	16	10	69
16e.	n = 119	10	12	16	10	71
17.	n = 121	59	35	2	7	18
18.	n = 121	68	39	10	4	0
		Yes	No			
19a.	n = 118	84	34			
19b.	n = 117	68	49			
19c.	n = 113	66	47			
19d.	n = 112	43	69			
19e.	n = 113	73	40			
19f.	n = 114	59	56			
19g.	n = 114	62	52			
20.	n = 122	<i>Item 20 did not use the "Strongly Agree" to "Strongly Disagree" scale. Numbers below reflect the number of parents selecting each goal. These numbers will not sum to the total number of item respondents because parents may select multiple goals.</i>				
		High School diploma	Certificate/ Associates degree	Bachelors degree	Graduate/ Professional degree	Military service
		118	19	113	94	1