

y Results

Lamar Middle School

The following report contains the results of the 2006-2007 AISD Parent Survey for your campus and all AISD schools at your level. The first section of this report provides a comparison of the campus demographics and the demographics reported by parents who responded to the survey from your campus. The next section describes the percentages of parents selecting specific responses for each survey item, and the final section indicates the actual number of parents who selected each response option. Campus survey results should be examined for areas of strength and opportunities for improvement. Results for all AISD schools at your level and results for your campus from 2005-2006 are presented to provide references for comparison. Please note that due to differences in response rates by campus, ranging from 1.67% to 19.79%, district level results are more influenced by some campuses than others.

How many parents responded to the survey in 2005-2006 and 2006-2007, and how does this compare to the number of students in the population each year?

	Campus	District EL	District MS	District HS
# of Parents Responding in 2005-2006	88	12,137	2,007	2,700
# of Students in 2005-2006	687	44,827	15,624	20,081
<i>Ratio of Parent Respondents to Students, 2005-2006</i>	12.8%	24.3%	11.5%	10.4%
# of Parents Responding in 2006-2007	135	11,812	1,354	1,426
# of Students in 2006-2007	682	45,431	15,790	20,279
<i>Ratio of Parent Respondents to Students, 2006-2007</i>	19.8%	26%	8.6%	7%

	% of Students, as Reported by Campus Parent Respondents	% of Students in Campus Population
African American	13.7%	14.2%
Asian	7.3%	2.9%
Hispanic	33.9%	36.8%
Native American	0.8%	0.6%
White	44.4%	45.5%

What did parents report as their child's grade, and how does this compare to the grade level distribution of the student population?

Grade	% of Students, as Reported by Campus Parent Respondents	% of Students in Campus Population
6th	44.8%	33.1%
7th	30.6%	35.8%
8th	24.6%	31.1%
9th	N/A	N/A
10th	N/A	N/A
11th	N/A	N/A
12th	N/A	N/A

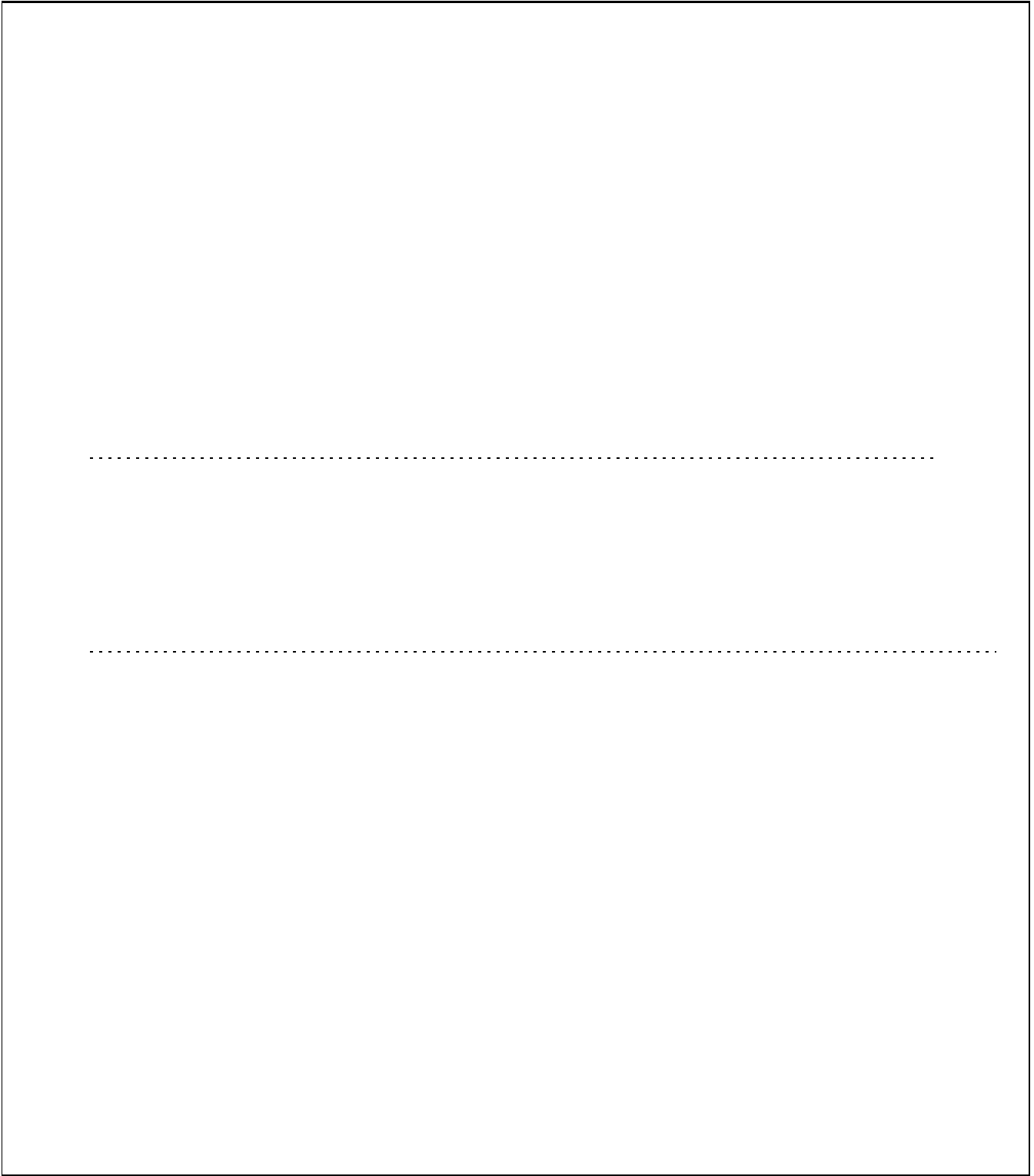
Note: Student population data are based on Fall PEIMS data submitted by the district to TEA, and may differ from the official AEIS report.

USING THE RESULTS OF THE AISD PARENT SURVEY

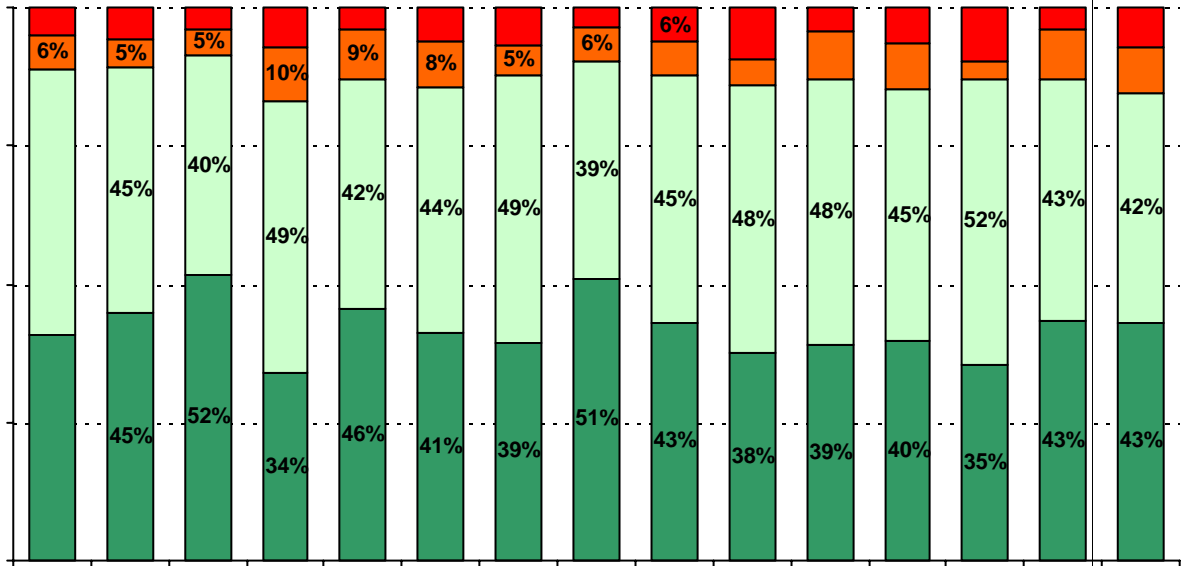
Each survey item is presented below, followed by a bar graph containing your school’s results for two years and this year’s results for all campuses at your level. You will be able to identify areas in which your school’s results have changed over time, and you will be able to compare the responses of your school’s parents to those of parents at your level district-wide.

Please examine your results to determine areas of strength and opportunities for improvement. Areas of strength can be identified by large percentages of parents who “Strongly Agree” or “Agree” with a statement. Opportunities for improvement can be identified by large percentages of parents who “Disagree” or “Strongly Disagree” with a statement. In addition, please look for patterns in which one staff category consistently receives more positive or negative responses than other staff categories. This will help you to identify opportunities for praise and areas in which training may be necessary. District responses for all schools at your level are also provided for comparison with 2006-2007 responses from your school. If your campus percentages are very different from the percentages reported by parents district-wide, please consider potential reasons for discrepancies.

Longitudinal data are provided, when available. It is important to look at the responses from year to year to determine whether there are any areas in which percentages have changed by more than a few points. Keep in mind that when response rates are low, the percentages may appear to fluctuate more without necessarily signaling a serious shift in perception. Also, think about any changes in campus policies and practices that may have resulted in positive or negative changes. How can campus staff continue to support the positive changes? How might your staff address any undesirable changes that may have occurred? Because parental perceptions of treatment by school personnel are based on interactions with a variety of school staff, representatives from all areas should be included in discussions regarding school planning and improvement processes.



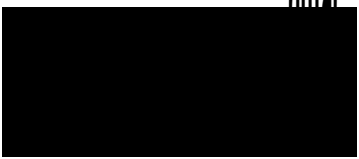
6. The following school staff provide me with opportunities for two-way communication.



36%

Teachers

Principal

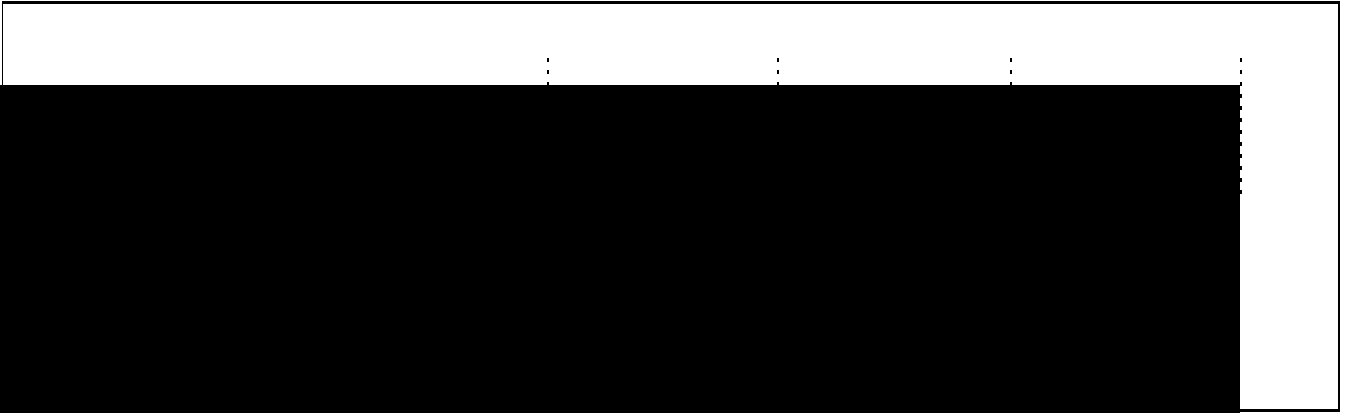


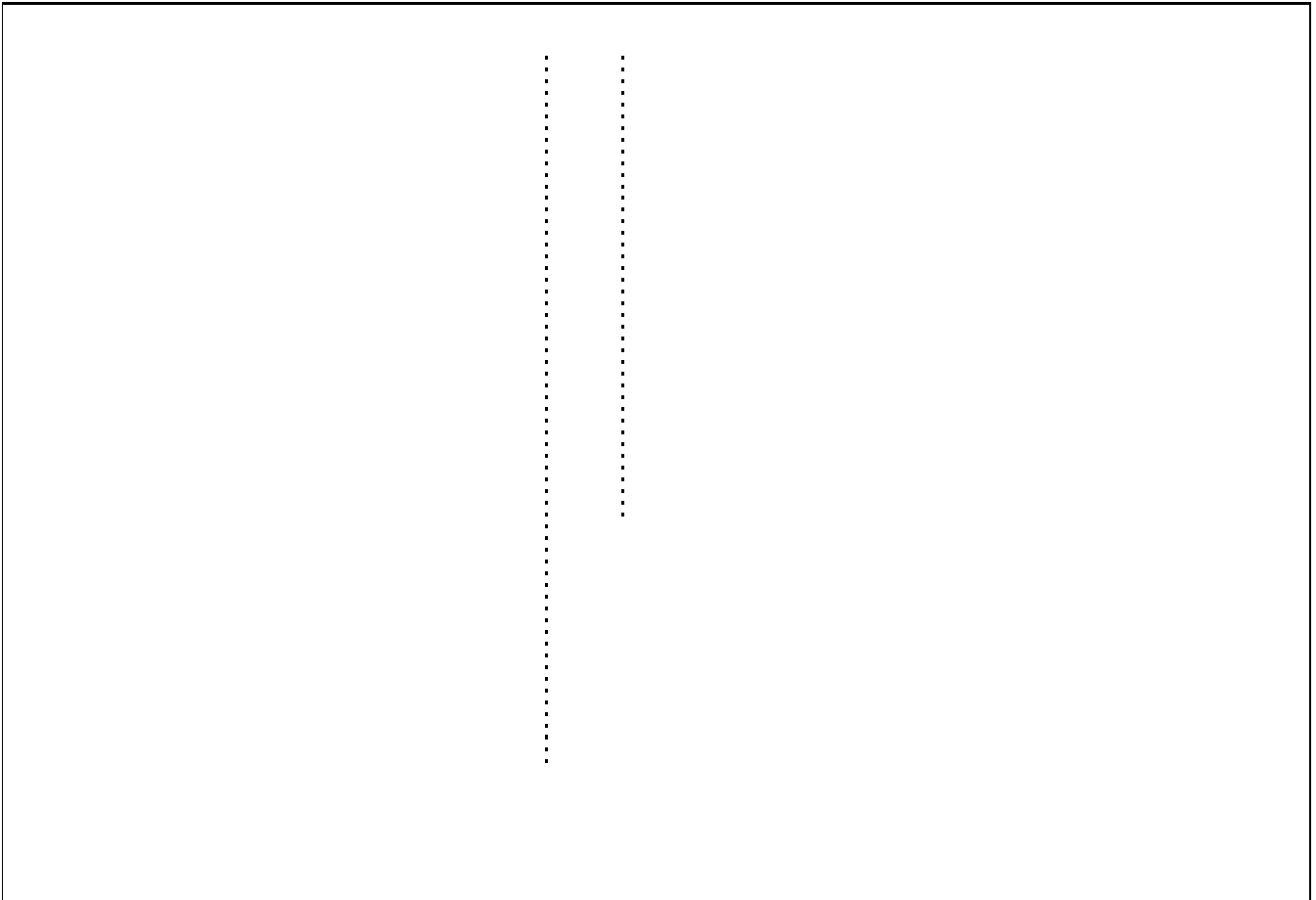
.....

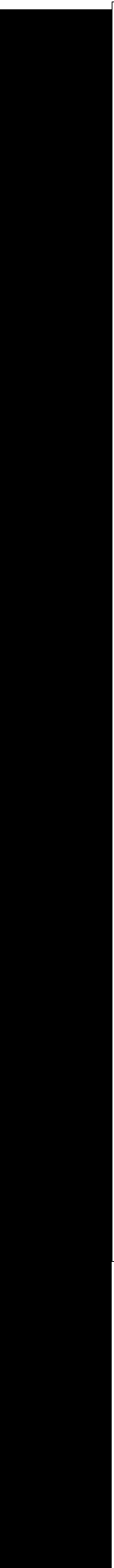
.....

.....

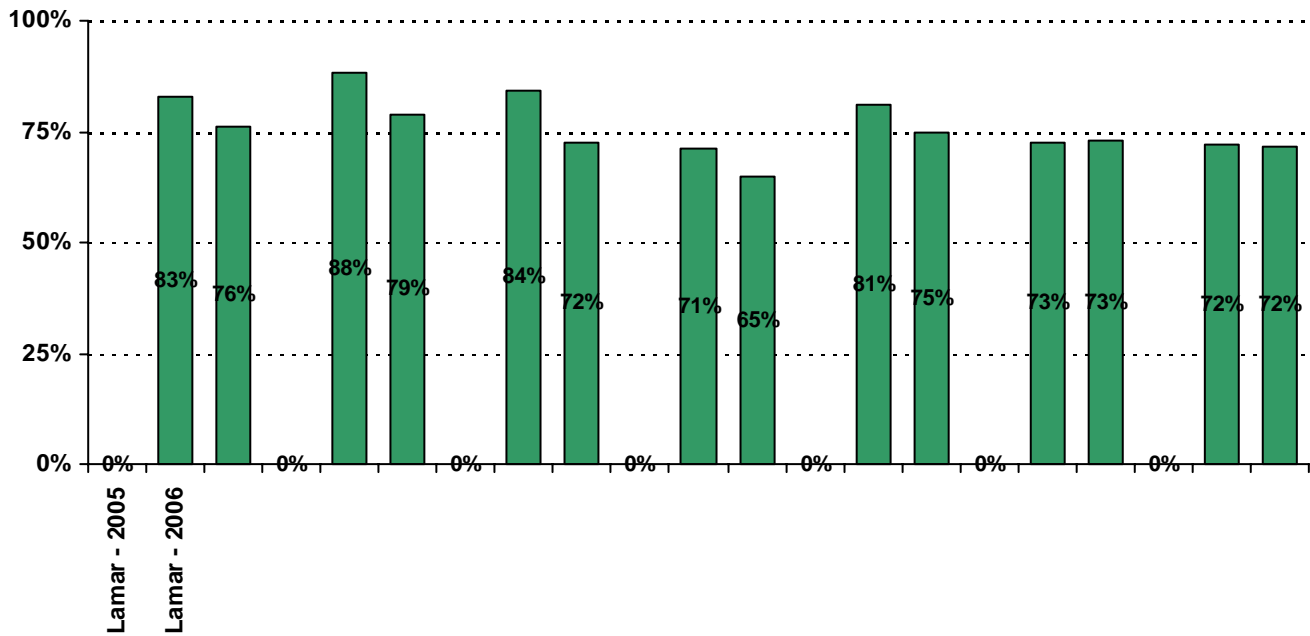
.....





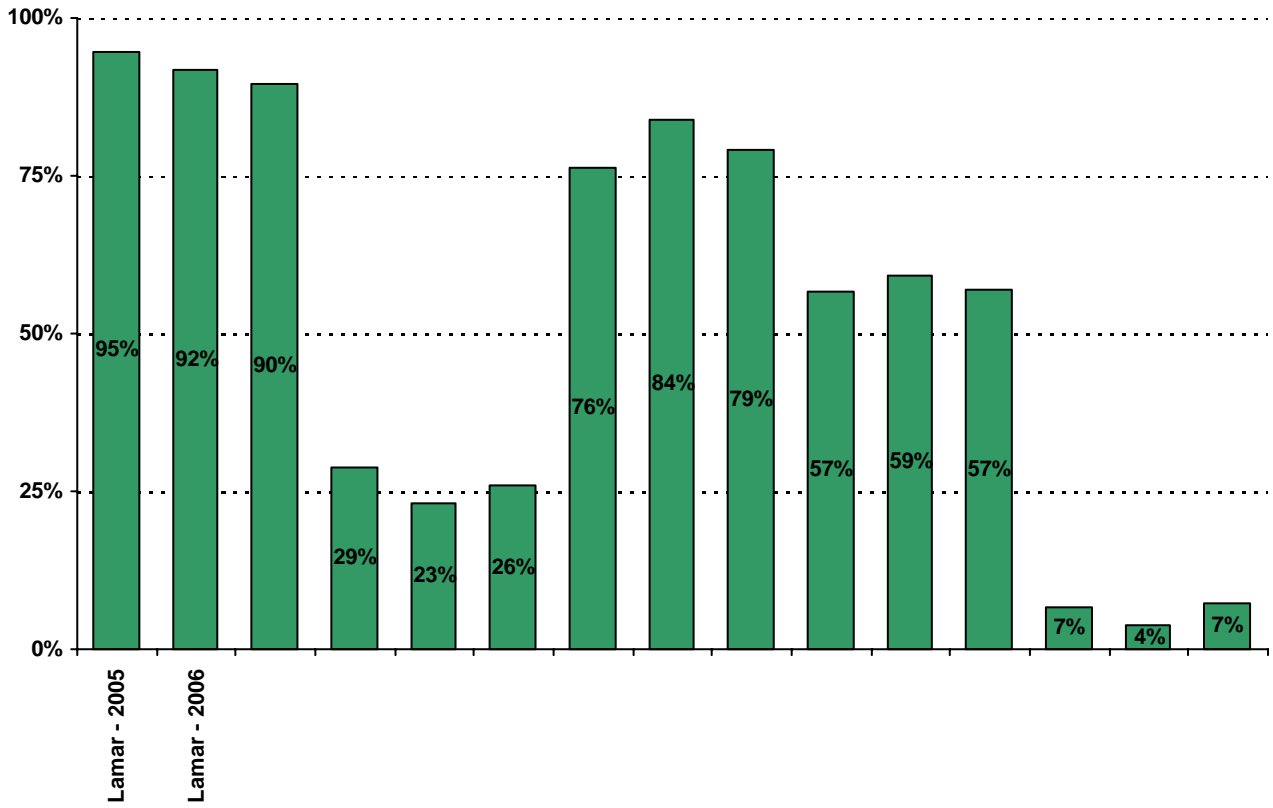


19. Which of the following activities do you participate in at your child's school:*



* Item(s) #17, #18, #19 added to the survey in 2006

20. My goals for my child include the following plans:



Item Response Details

Number of Lamar Middle School Parent Responses, by Response Option

		Strongly Agree	Agree	Disagree	Strongly Disagree	Don't Know/NA
4.	n = 113		1	112		
5a.	n = 131	62	38	2	7	22
5b.	n = 128	55	36	3	4	30
5c.	n = 129	67	38	3	6	15
5d.	n = 131	69	44	5	6	7
5e.	n = 129	68	46	5	6	4
6a.	n = 125	43	43	9	4	26
6b.	n = 127	36	44	8	4	35
6c.	n = 129	57	44	7	4	17
6d.	n = 130	46	42	9	4	29
6e.	n = 127	54	54	6	7	6
7a.	n = 124	30	47	9	7	31
7b.	n = 125	29	42	11	4	39
7c.	n = 124	49	45	8	2	20
7d.	n = 124	39	32	13	2	38
7e.	n = 128	56	48	9	4	11
8a.	n = 125	37	39	2	5	42
8b.	n = 122	34	37	2	3	46
8c.	n = 126	52	43	1	3	27
8d.	n = 122	31	30	6	2	53
8e.	n = 125	53	48	6	3	15
9a.	n = 129	56	40	4	6	23
9b.	n = 124	54	37	3	5	25
9c.	n = 129	61	44	3	5	16
9d.	n = 126	53	47	2	5	19
9e.	n = 130	55	52	4	6	13
9f.	n = 123	53	38	2	5	25
10.	n = 131	19	12	9	15	76
11.	n = 132	60	48	12	7	5
12.	n = 130	62	49	9	4	6

Number of Lamar Middle School Parent Responses, by Response Option
(Continued)

		Strongly Agree	Agree	Disagree	Strongly Disagree	Don't Know/NA
13a.	n = 130	62	51	6	4	7
13b.	n = 130	47	53	12	4	14
13c.	n = 130	45	43	18	6	18
14a.	n = 133	56	47	15	3	12
14b.	n = 129	55	43	12	5	14
14c.	n = 128	38	32	20	5	33
15a.	n = 133	64	45	17	5	2
15b.	n = 129	38	35	26	7	23
15c.	n = 129	43	39	28	6	13
15d.	n = 129	51	46	15	5	12
15e.	n = 128	59	48	8	7	6
16a.	n = 130	20	27	15	11	57
16b.	n = 128	10	24	12	13	69
16c.	n = 127	8	23	13	13	70
16d.	n = 126	10	21	14	14	67
16e.	n = 125	9	24	13	13	66
17.	n = 130	69	33	3	7	18
18.	n = 130	77	39	7	5	2
		Yes	No			
19a.	n = 127	98	29			
19b.	n = 127	92	35			
19c.	n = 121	90	31			
19d.	n = 122	71	51			
19e.	n = 122	91	31			
19f.	n = 122	74	50			
19g.	n = 122	72	50			
20.	n = 135	<i>Item 20 did not use the "Strongly Agree" to "Strongly Disagree" scale. Numbers below reflect the number of parents selecting each goal. These numbers will not sum to the total number of item respondents because parents may select multiple goals.</i>				
		High School diploma	Certificate/ Associates degree	Bachelors degree	Graduate/ Professional degree	Military service
		124	31	113	80	5