



Langford Elementary School

and opportunities for improvement. Results for all AISD schools provide a reference for comparison.

selected each response option. Campus survey results should be e

	Campus	District EL	District MS	District HS
# of Parents Responding in 2003-2004		16,070	2,721	1,640
# of Students in 2003-2004		42,594	15,819	19,847
<i>Ratio of Parent Respondents to Students, 2003-04</i>		37.7 %	17.2 %	8.3 %
# of Parents Responding in 2004-2005	155	12,137	2,007	2,700
# of Students in 2004-2005		43,566	15,705	19,976
<i>Ratio of Parent Respondents to Students in 2004-05</i>		27.9 %	12.8 %	13.5 %

What did parents report as their child's ethnicity, and how does this compare to the ethnic distribution of the student population?

Ethnicity	% of Students, as Reported by Parent Respondents	% of Students in Campus Population
African American	9.8%	11.8%
Asian	0.0%	0.6%
Hispanic	83.5%	82.1%
Native American	0.0%	0.1%
White	6.8%	5.4%

What did parents report as their child's grade, and how does this compare to the grade level distribution of the student population?

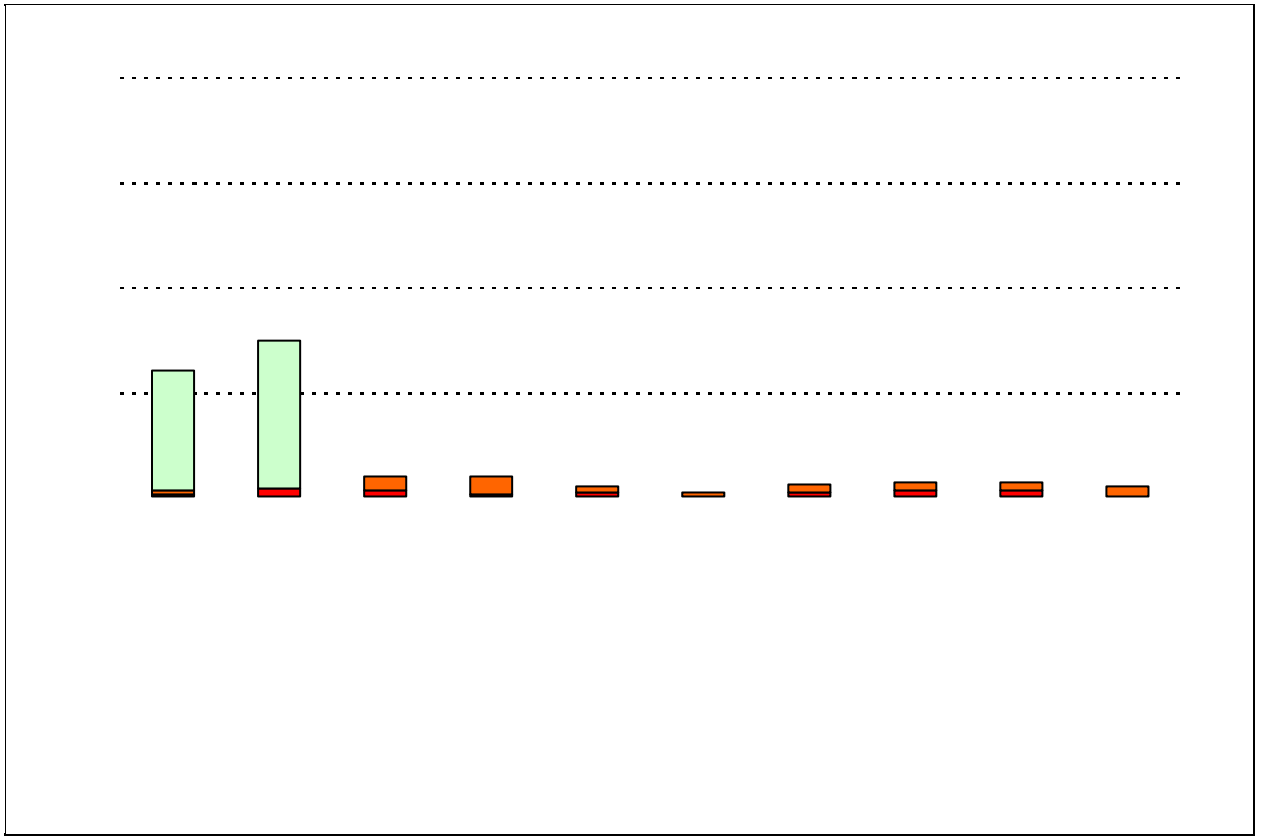
Grade	% of Students, as Reported by Parent Respondents	% of Students in Campus Population
EC	1.3%	1.2%
PK	13%	14.8%
K	9.1%	17.4%
1st	27.3%	15.9%
2nd	16.2%	13.7%
3rd	10.4%	13.5%
4th	18.2%	12.1%
5th	4.5%	11.2%
6th	N/A	N/A

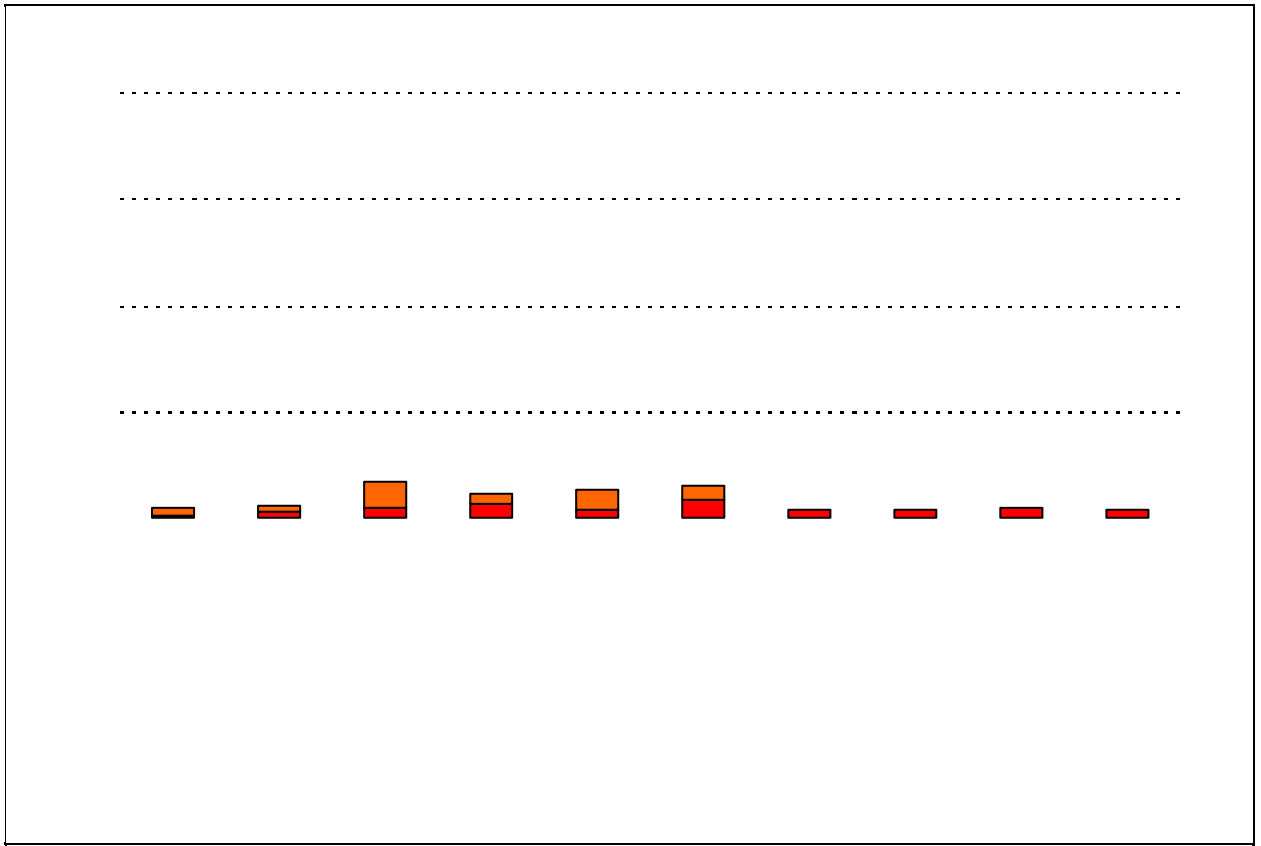
Note: Student population data are based on Fall 2003 and Fall 2004 PEIMS data submitted by the district to TEA, and may differ from the official AEIS report.

Each survey item is presented below, followed by a bar graph containing results for your campus and for all campuses at your level.

Please examine the results below to determine areas of strength and opportunities for improvement. Large percentages of "Strongly Agree" and "Agree" indicate areas in which your campus staff excel, and large percentages of "Disagree" and "Strongly Disagree" indicate areas for possible improvement.

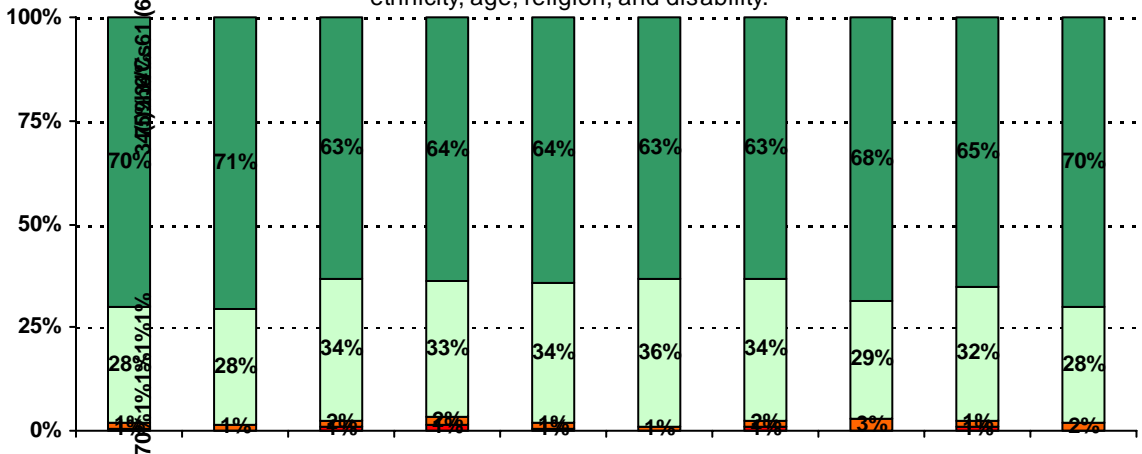
In addition, please compare the percentage of parents from your campus selecting each response option with the percentage of all AISD parents selecting each response option. If your campus percentages are very different from the percentages reported districtwide, please consider

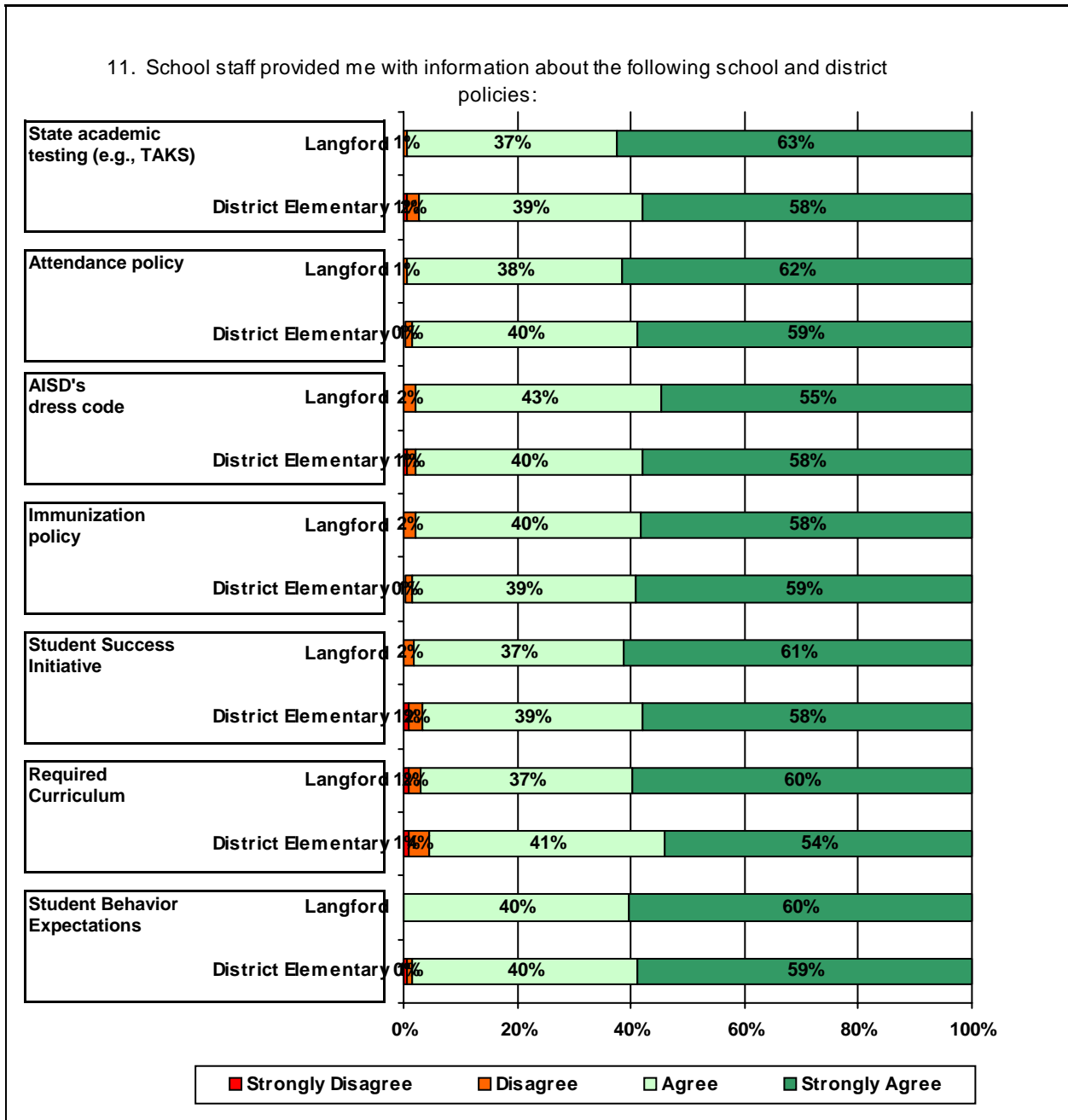
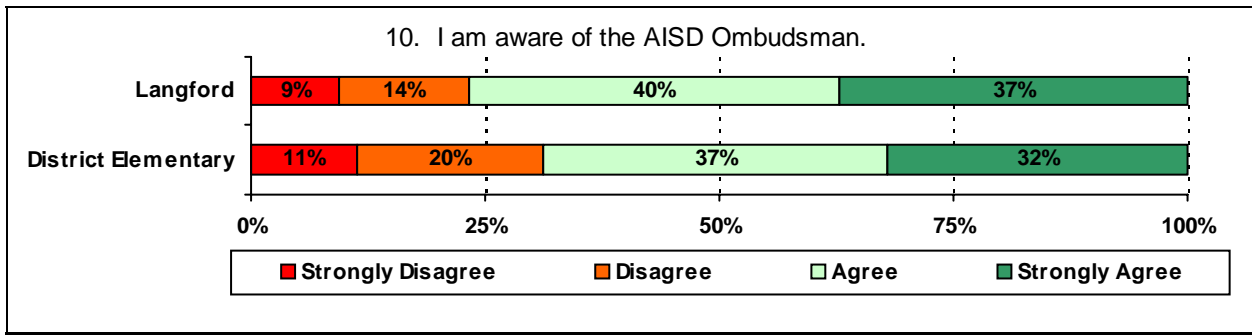




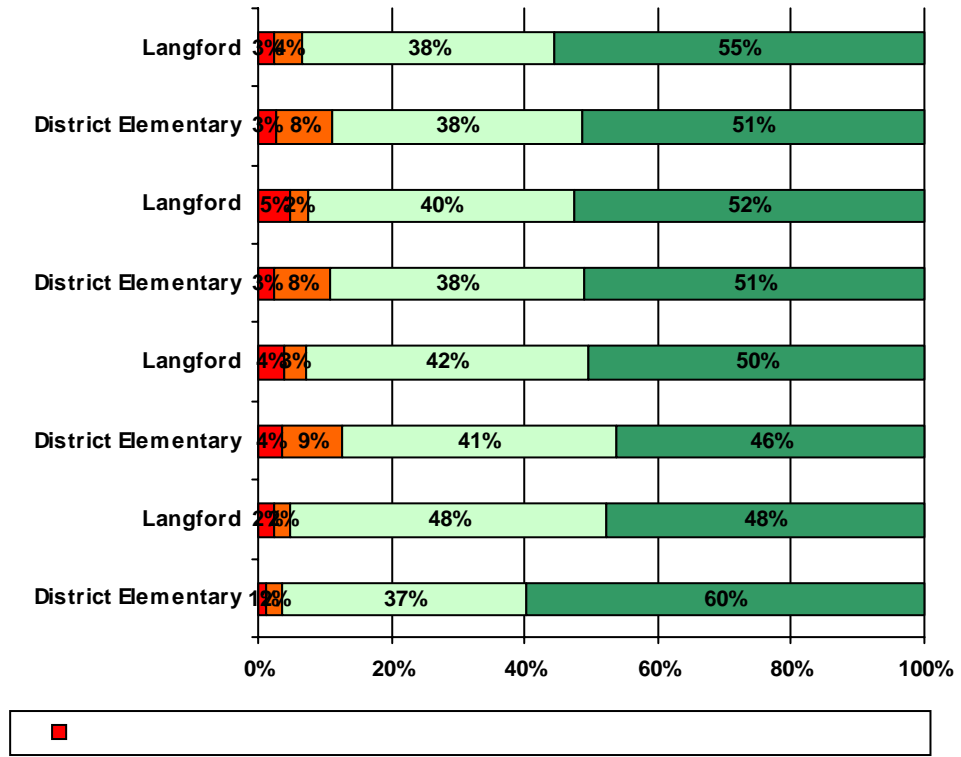
District
Ele75%70%70%

The following school staff treat my child fairly with respect to culture, gender, ethnicity, age, religion, and disability.

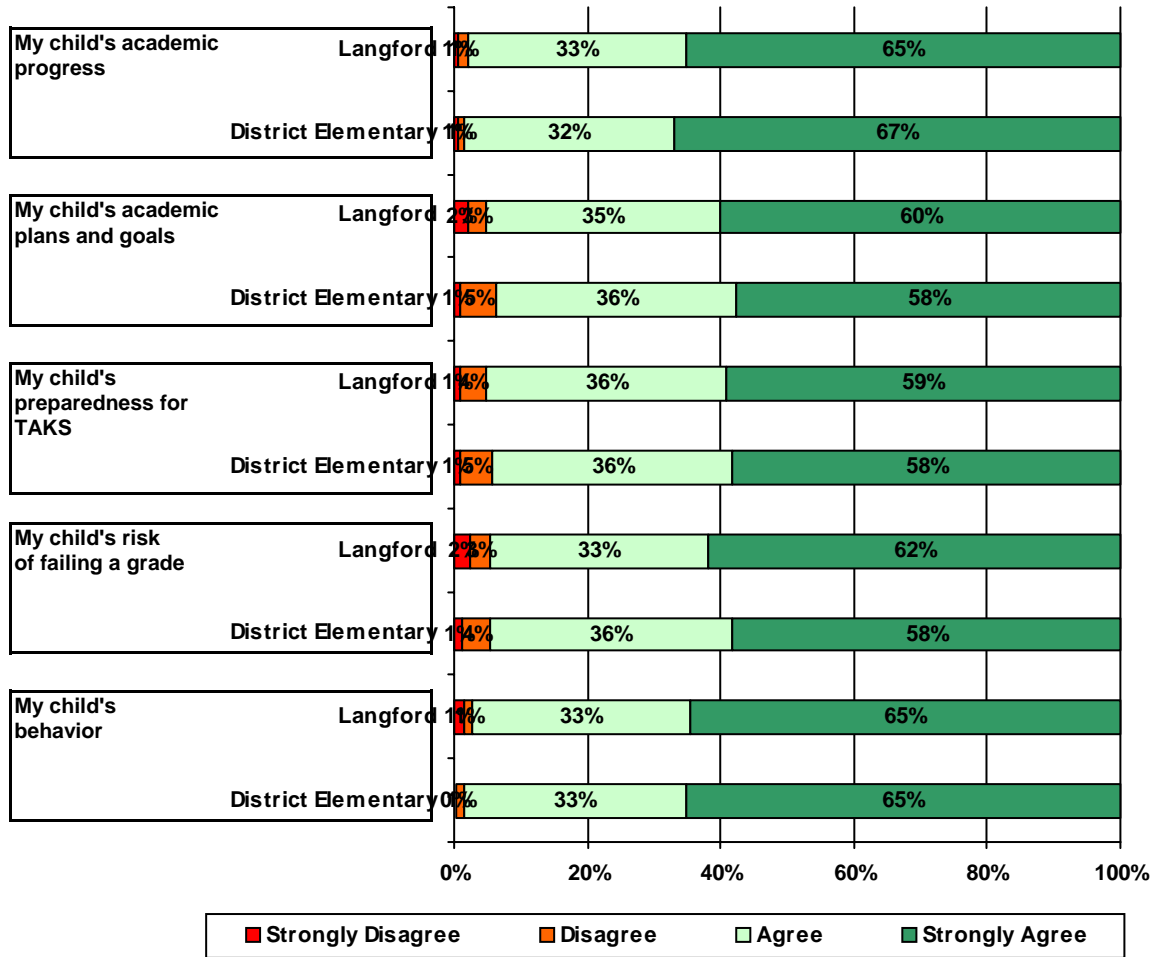




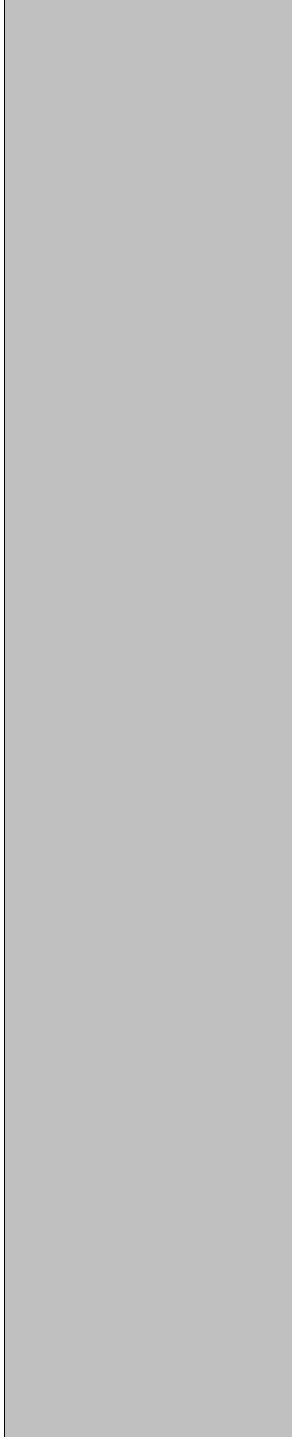
12. School staff provided me with information about the following programs :



13. School staff provided me with the following information about my child:



Disagree Strongly



11a.	n = 150	85	50	1	0	4	10
		87	53	1	0	2	4

*This item included an additional response option, 'I am not aware of AISD's academic benchmark testing.' An additional 22 parents selected this option.