



## 2006-2007 AISD Parent Survey Results

### Langford Elementary School

The following report contains the results of the 2006-2007 AISD Parent Survey for your campus and all AISD schools at your level. The first section of this report provides a comparison of the campus demographics and the demographics reported by parents who responded to the survey from your campus. The next section describes the percentages of parents selecting specific responses for each survey item, and the final section indicates the actual number of parents who selected each response option. Campus survey results should be examined for areas of strength and opportunities for improvement. Results for all AISD schools at your level and results for your campus from 2005-2006 are presented to provide references for comparison.

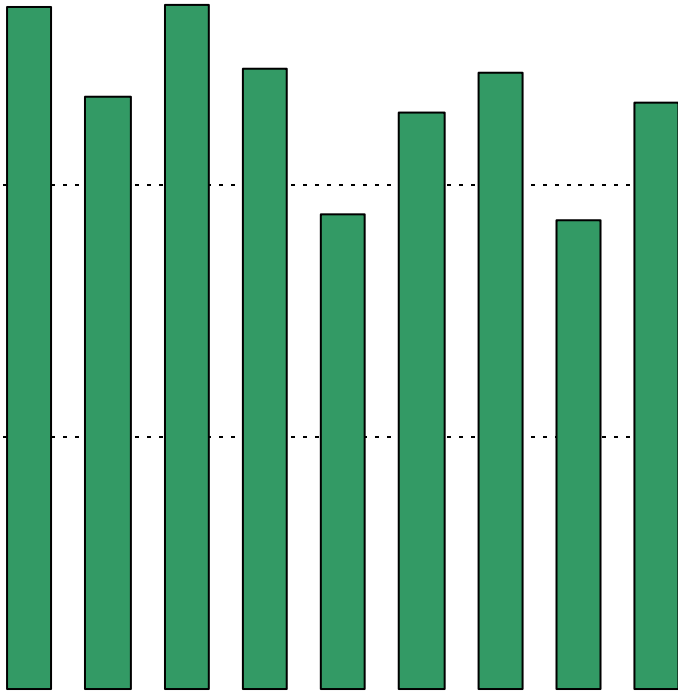
#### How many parents responded to the survey in 2005-2006 and 2006-2007, and how does this compare to the number of students in the population each year?

	Campus	District EL	District MS	District HS
# of Parents Responding in 2005-2006	266	12,137	2,007	2,700
# of Students in 2005-2006	1,007	44,827	15	
# of Parents Responding in 2006-2007	185		1,354	1,426
# of Students in 2006-2007	844	431	15,790	20,279

#### What did parents report as their child's ethnicity, and how does this compare to the ethnic distribution of the student population?

Ethnicity	% of Students, as Reported by Campus Parent Respondents	% of Students in Campus Population
African American	3.3%	10.3%
Asian	1.3%	0.6%
Hispanic	92.1%	85.8%
Native American	0.7%	0.0%
White	2.6%	3.3%



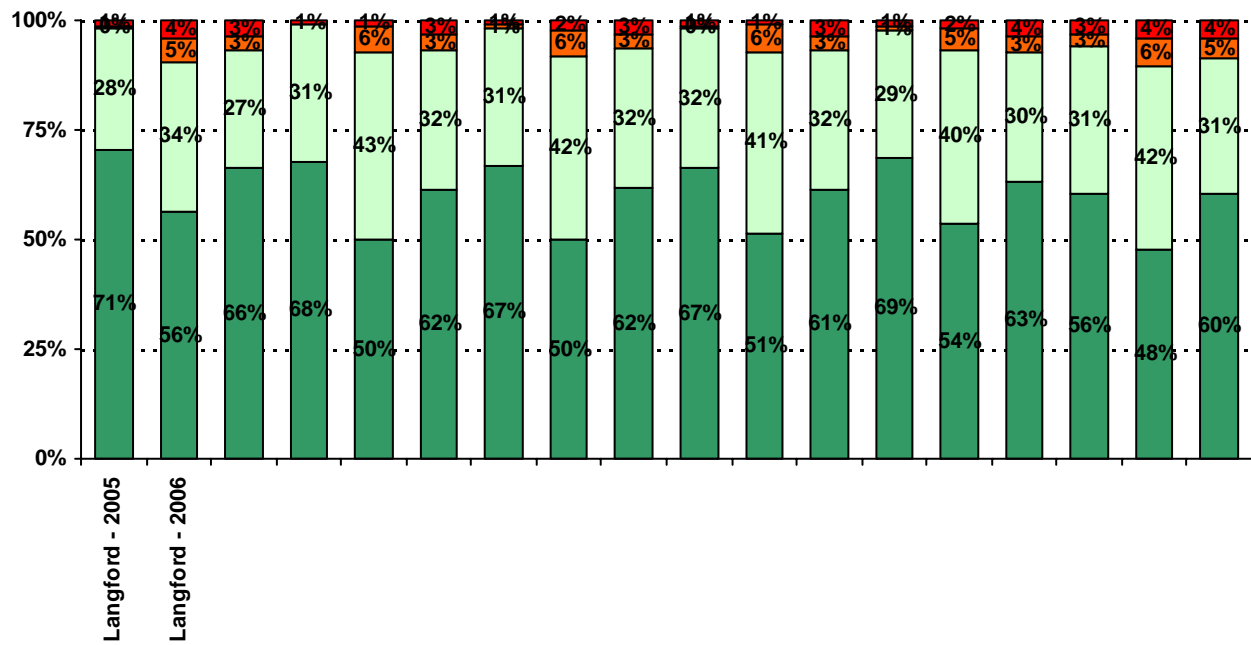


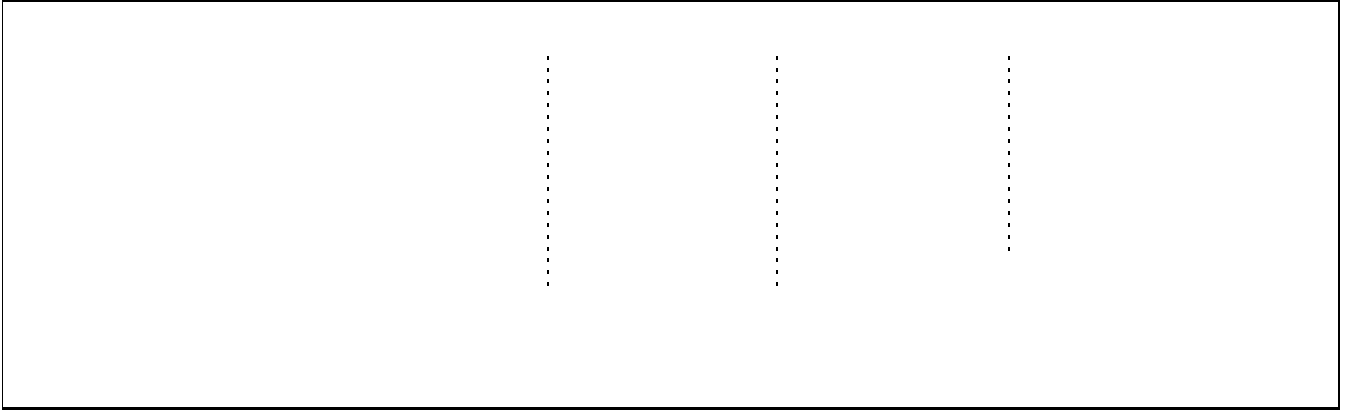
.....

.....

.....

.....



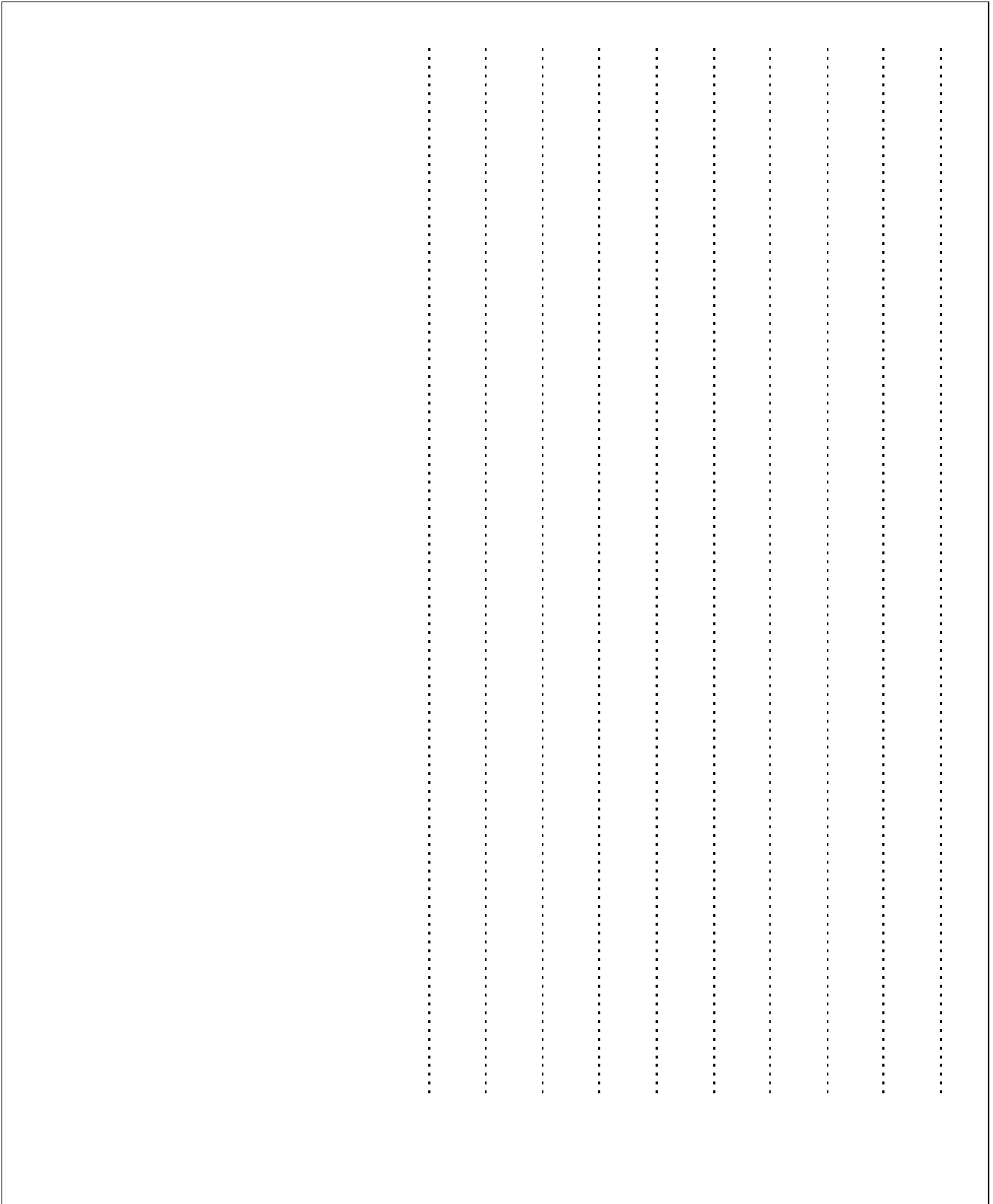


A handwriting practice sheet enclosed in a black rectangular border. The sheet features ten horizontal rows of solid green bars, each row containing a single bar. The bars vary in length and are positioned between two vertical dotted lines. To the right of these bars, there are four additional vertical dotted lines, creating a series of vertical columns for writing practice. The bars are arranged in a roughly alternating pattern of longer and shorter lengths from top to bottom.

Row	Bar Length (approx. % of total width)
1	85%
2	55%
3	75%
4	85%
5	70%
6	80%
7	85%
8	65%
9	75%
10	70%

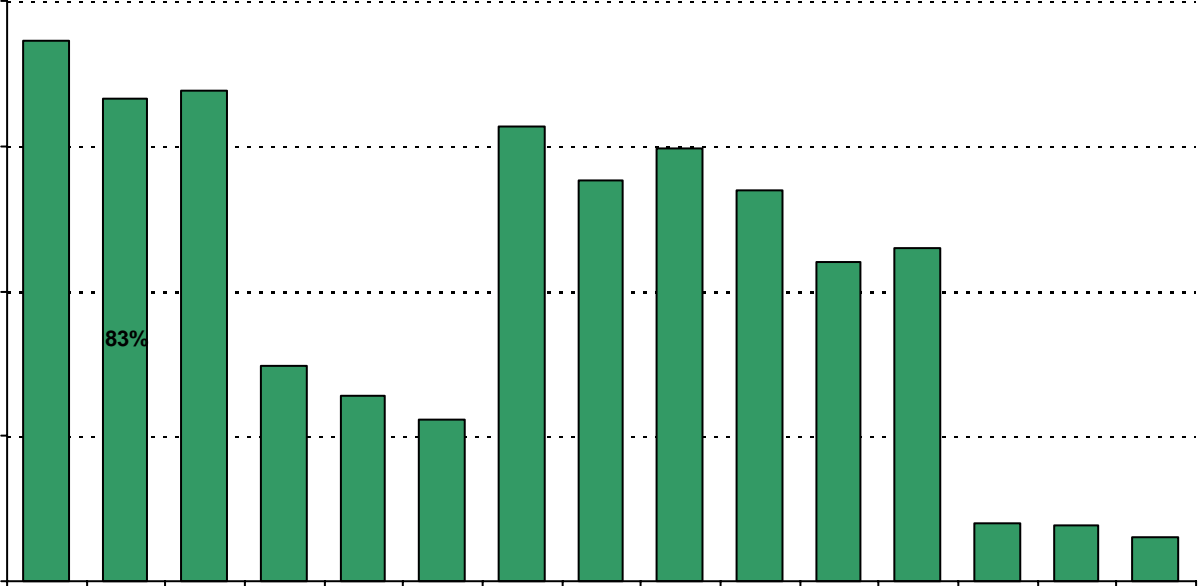
**Required  
curriculum**







20. My goals for my child include the following plans:



## Item Response Details

Number of Langford Elementary School Parent Responses, by Response Option

		Strongly Agree	Agree	Disagree	Strongly Disagree	Don't Know/NA
<b>4a.</b>	<b>n = 163</b>	54	75	6	7	21
<b>4b.</b>	<b>n = 159</b>	49	74	8	4	24
<b>3c.</b>	<b>n = 159</b>	47	64	7	5	23
<b>3d.</b>	<b>n = 167</b>	76	68	8	10	5
<b>3e.</b>	<b>n = 174</b>	102	54	12	6	0
<b>6a.</b>	<b>n = 163</b>	54	75	6	7	21
<b>6b.</b>	<b>n = 159</b>	49	74	8	4	24
<b>6c.</b>	<b>n = 156</b>	47	64	7	5	33
<b>6d.</b>	<b>n = 164</b>	56	77	11	6	14
<b>6e.</b>	<b>n = 175</b>	94	62	9	7	3
<b>7a.</b>	<b>n = 153</b>	51	63	9	7	23
<b>7b.</b>	<b>n = 150</b>	41	65	9	5	30
<b>7c.</b>	<b>n = 150</b>	49	58	7	7	29
<b>7d.</b>	<b>n = 154</b>	50	62	13	6	23
<b>7e.</b>	<b>n = 171</b>	95	59	8	6	3
<b>8a.</b>	<b>n = 155</b>	48	58	9	7	33
<b>8b.</b>	<b>n = 150</b>	41	59	10	4	36
<b>8c.</b>	<b>n = 152</b>	45	59	8	5	35
<b>8d.</b>	<b>n = 152</b>	46	62	11	3	30
<b>8e.</b>	<b>n = 173</b>	86	61	8	11	7
<b>9a.</b>	<b>n = 162</b>	80	59	7	3	13
<b>9b.</b>	<b>n = 157</b>	72	58	9	1	17
<b>9c.</b>	<b>n = 154</b>	68	57	8	3	18
<b>9d.</b>	<b>n = 158</b>	74	63	9	2	10
<b>9e.</b>	<b>n = 172</b>	96	58	9	7	2

**13a. n = 178**

**13b. n = 172**

**13c. n = 161**

---