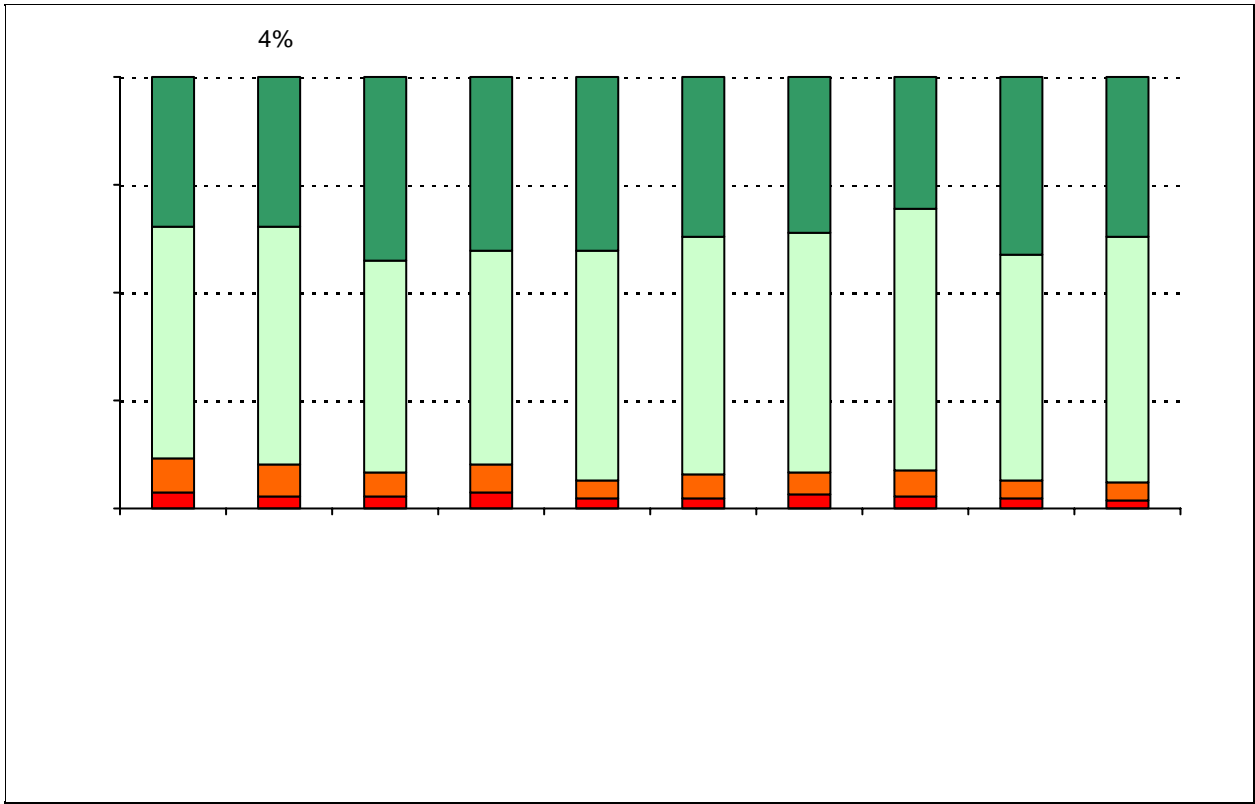


	<b>Campus</b>	<b>District EL</b>	<b>District MS</b>	<b>District HS</b>
<b># of Parents Responding in 2003-2004</b>	37	16,070	2,721	1,640
<b># of Students in 2003-2004</b>	1,766	42,594	15,819	19,847
<b><i>Ratio of Parent Respondents to Students, 2003-04</i></b>	<b><i>2.1%</i></b>	<b><i>37.7 %</i></b>	<b><i>17.2 %</i></b>	<b><i>8.3 %</i></b>
<b># of Parents Responding in 2004-2005</b>	926	12,137	2,007	2,700
<b># of Students in 2004-2005</b>	1,733	43,566	15,705	19,976
<b><i>Ratio of Parent Respondents to Students in 2004-05</i></b>	<b><i>53.4%</i></b>	<b><i>27.9 %</i></b>	<b><i>12.8 %</i></b>	<b><i>13.5 %</i></b>

Note: The ratio of parent respondents to students is listed above as a percentage for ease of interpretation; however, it is the number of parents who responded per 100 students enrolled.

Each survey item is presented below, followed by a bar graph containing results for your campus and for all campuses at your level.

Please examine the results below to determine areas of strength and opportunities for





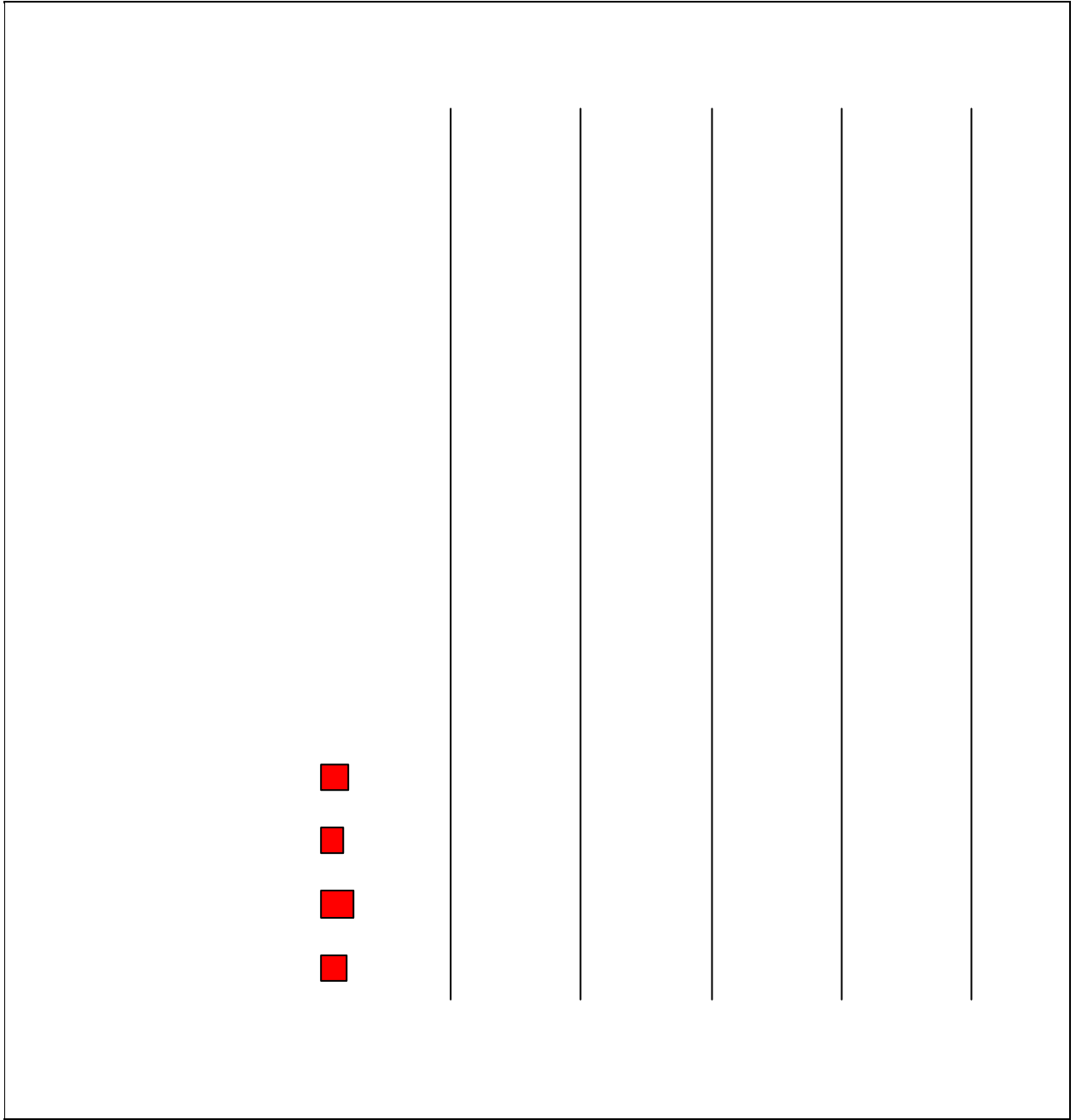
.....

.....

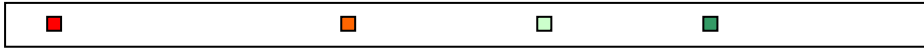
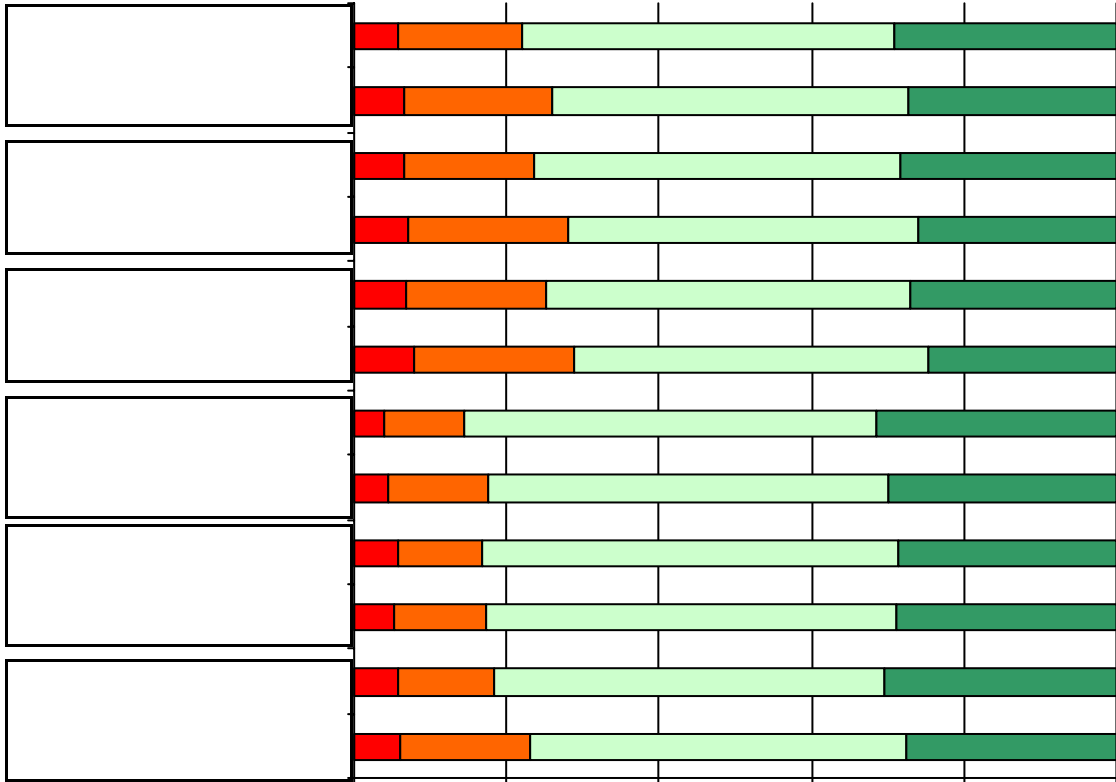
.....

.....

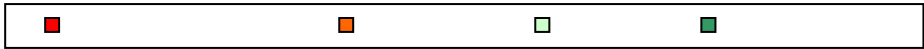
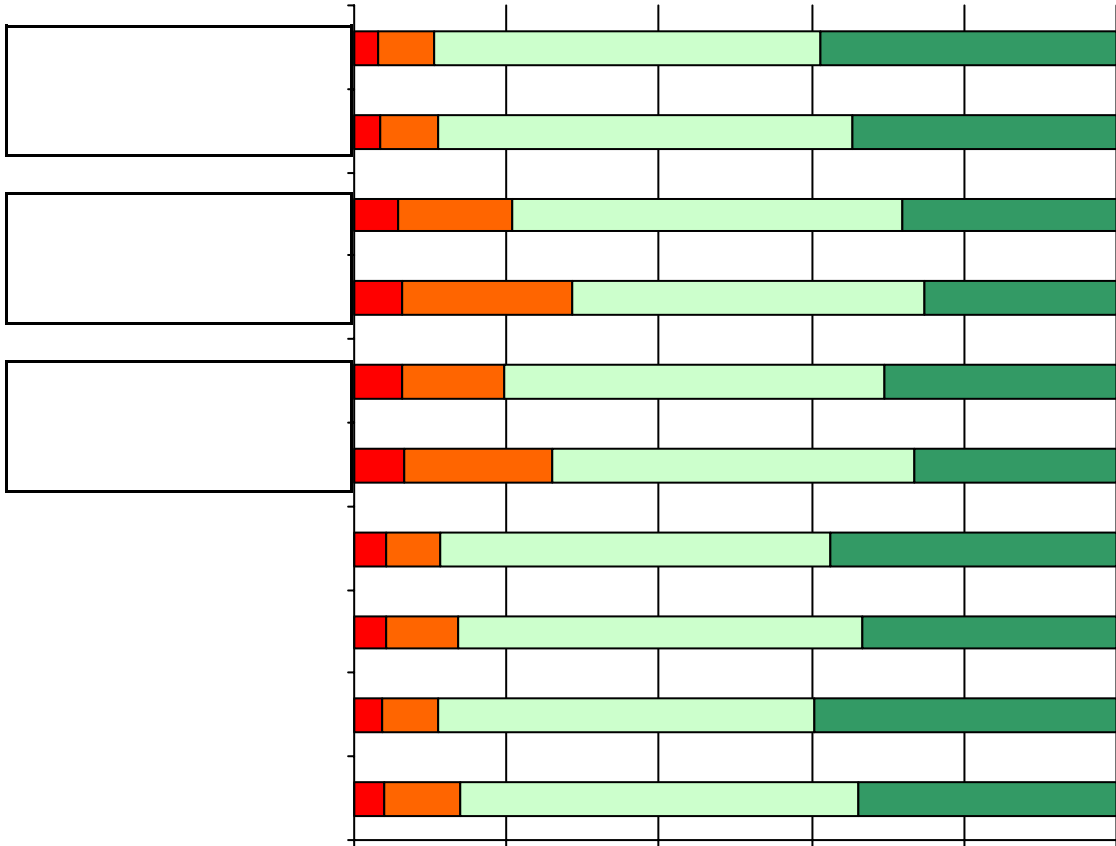




12. School staff provided me with information about the following programs:

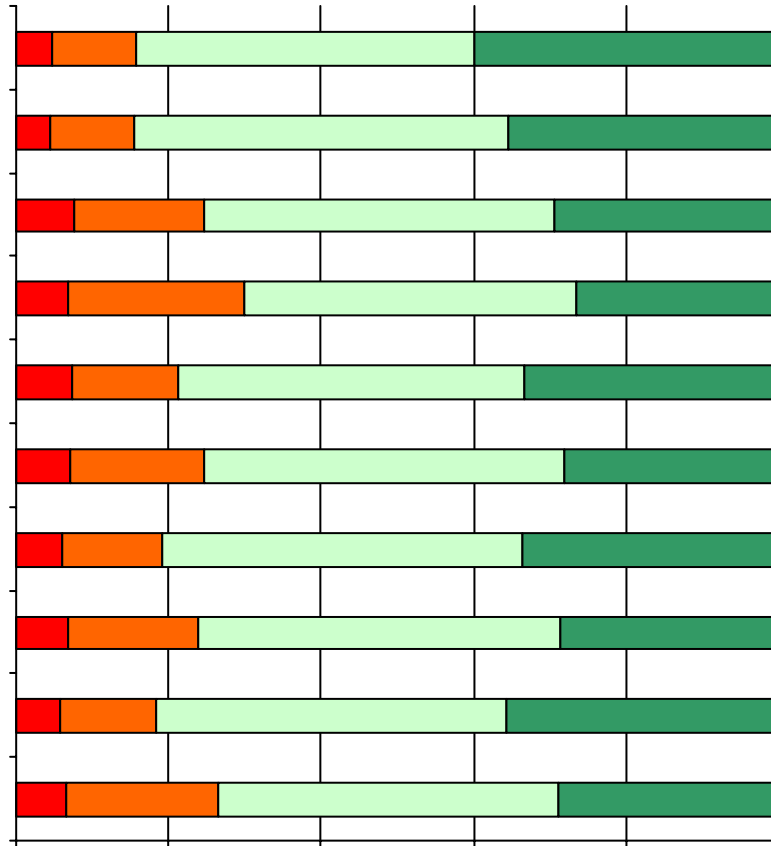


13. School staff provided me with the following information about my child:





14. School staff provided me with the following graduation and post-graduation information:



## Item Response Details

Number of Lanier High School Parent Responses, by Response Option

		Strongly Agree	Agree	Disagree	Strongly Disagree	Does Not Apply	Don't Know
<b>3a.</b>	<b>n = 891</b>	237	365	28	11	51	199
<b>3b.</b>	<b>n = 871</b>	197	391	40	18	56	169
<b>3c.</b>	<b>n = 886</b>	287	427	44	18	34	76
<b>3d.</b>	<b>n = 879</b>	302	368	51	26	34	98
<b>3e.</b>	<b>n = 872</b>	251	401	53	20	37	110
<b>4a.</b>	<b>n = 884</b>	187	317	79	33	73	195
<b>4b.</b>	<b>n = 873</b>	164	354	68	39	78	170
<b>4c.</b>	<b>n = 881</b>	253	387	59	40	39	103
<b>4d.</b>	<b>n = 880</b>	239	395	58	33	49	106
<b>4e.</b>	<b>n = 877</b>	199	386	70	36	60	126
<b>5a.</b>	<b>n = 873</b>	170	309	95	44	82	173
<b>5b.</b>	<b>n = 870</b>	153	333	100	43	73	168
<b>5c.</b>	<b>n = 884</b>	266	385	63	33	56	81
<b>5d.</b>	<b>n = 881</b>	271	380	74	31	42	83
<b>5e.</b>	<b>n = 867</b>	185	350	101	46	78	107
<b>6a.</b>	<b>n = 874</b>	201	321	47	33	76	196
<b>6b.</b>	<b>n = 863</b>	162	330	60	37	82	192
<b>6c.</b>	<b>n = 870</b>	242	369	48	22	60	129
<b>6d.</b>	<b>n = 876</b>	243	370	56	32	54	121
<b>6e.</b>	<b>n = 870</b>	204	345	68	28	77	148
<b>7a.</b>	<b>n = 876</b>	305	338	36	19	30	148
<b>7b.</b>	<b>n = 863</b>	271	360	38	26	31	137
<b>7c.</b>	<b>n = 871</b>	323	361	48	24	21	94
<b>7d.</b>	<b>n = 867</b>	329	353	42	24	22	97
<b>7e.</b>	<b>n = 860</b>	304	356	47	28	24	101
<b>*8.</b>	<b>n = 818</b>	206	343	50	43	22	86
<b>9.</b>	<b>n = 907</b>	214	505	67	30	13	78
<b>10.</b>	<b>n = 881</b>	93	238	103	94	32	321

Number of Lanier High School Parent Responses, by Response Option (Continued)

		<b>Strongly Agree</b>	<b>Agree</b>	<b>Disagree</b>	<b>Strongly Disagree</b>	<b>Does Not Apply</b>	<b>Don't Know</b>
<b>11a.</b>	<b>n = 869</b>	240	430	64	30	26	79
<b>11b.</b>	<b>n = 877</b>	275	455	54	27	17	49
<b>11c.</b>	<b>n = 860</b>	246	450	54	35	18	57
<b>11d.</b>	<b>n = 869</b>	282	440	51	26	20	50
<b>11e.</b>	<b>n = 0</b>	0	0	0	0	0	0
<b>11f.</b>	<b>n = 0</b>	0	0	0	0	0	0
<b>11g.</b>	<b>n = 867</b>	278	444	42	28	17	58
<b>12a.</b>	<b>n = 869</b>	182	306	102	37	97	145
<b>12b.</b>	<b>n = 860</b>	171	291	103	40	109	146
<b>12c.</b>	<b>n = 859</b>	171	303	117	43	64	161
<b>12d.</b>	<b>n = 869</b>	227	391	76	29	35	104
<b>13a.</b>	<b>n = 878</b>	311	405	60	25	21	56
<b>13b.</b>	<b>n = 870</b>	212	384	114	43	25	92
<b>13c.</b>	<b>n = 864</b>	234	382	102	49	27	70
<b>13d.</b>	<b>n = 873</b>	292	399	57	32	33	60
<b>13e.</b>	<b>n = 869</b>	311	387	58	29	36	48

\*This item included an additional response option, 'I am not aware of AISD's academic benchmark testing.' An additional 68 parents selected this option.