



2004-2005 AISD Parent Survey Results

Lee Elementary School

The following report contains the results of the 2004-2005 AISD Parent Survey for your campus and all AISD schools at your level. The first section of this report provides a comparison of the campus demographics and the demographics reported by parents who responded to the survey from your campus. The next section describes the percentage of parents selecting specific responses for each survey item, and the final section indicates the actual number of parents who selected each response option. Campus survey results should be examined for areas of strength and opportunities for improvement. Results for all AISD schools at your level are presented to provide a reference for comparison.

How many parents responded to the survey in 2003-2004 and 2004-2005, and how does this compare to the number of students in the population each year?

	Campus	District EL	District MS	District HS
# of Parents Responding in 2003-2004	136	16,070	2,721	1,640
# of Students in 2003-2004	374	42,594	15,819	19,847
<i>Ratio of Parent Respondents to Students, 2003-04</i>	36.4%	37.7 %	17.2 %	8.3 %
# of Parents Responding in 2004-2005	102	12,137	2,007	2,700
# of Students in 2004-2005	373	43,566	15,705	19,976
<i>Ratio of Parent Respondents to Students in 2004-05</i>	27.3%	27.9 %	12.8 %	13.5 %

Note: The ratio of parent respondents to students is listed above as a percentage for ease of interpretation; however, it is the number of parents who responded per 100 students enrolled.

What did parents report as their child's ethnicity, and how does this compare to the ethnic distribution of the student population?

Ethnicity	% of Students, as Reported by Parent Respondents	% of Students in Campus Population
African American	12.1%	10.2%
Asian	6.6%	4.6%
Hispanic	19.8%	20.4%
Native American	0.0%	0.5%
White	61.5%	64.3%

What did parents report as their child's grade, and how does this compare to the grade level distribution of the student population?

Grade	% of Students, as Reported by Parent Respondents	% of Students in Campus Population
EC	N/A	0.0%
PK	N/A	0.0%
K	17.8%	16.9%
1st	27.7%	19.0%
2nd	6.9%	13.1%
3rd	13.9%	14.2%
4th	22.8%	15.0%
5th	8.9%	13.4%
6th	2%	8.3%

Note: Student population data are based on Fall 2003 and Fall 2004 PEIMS data submitted by the district to TEA, and may differ from the official AEIS report.

2004-2005 AISD Parent Survey Item Responses

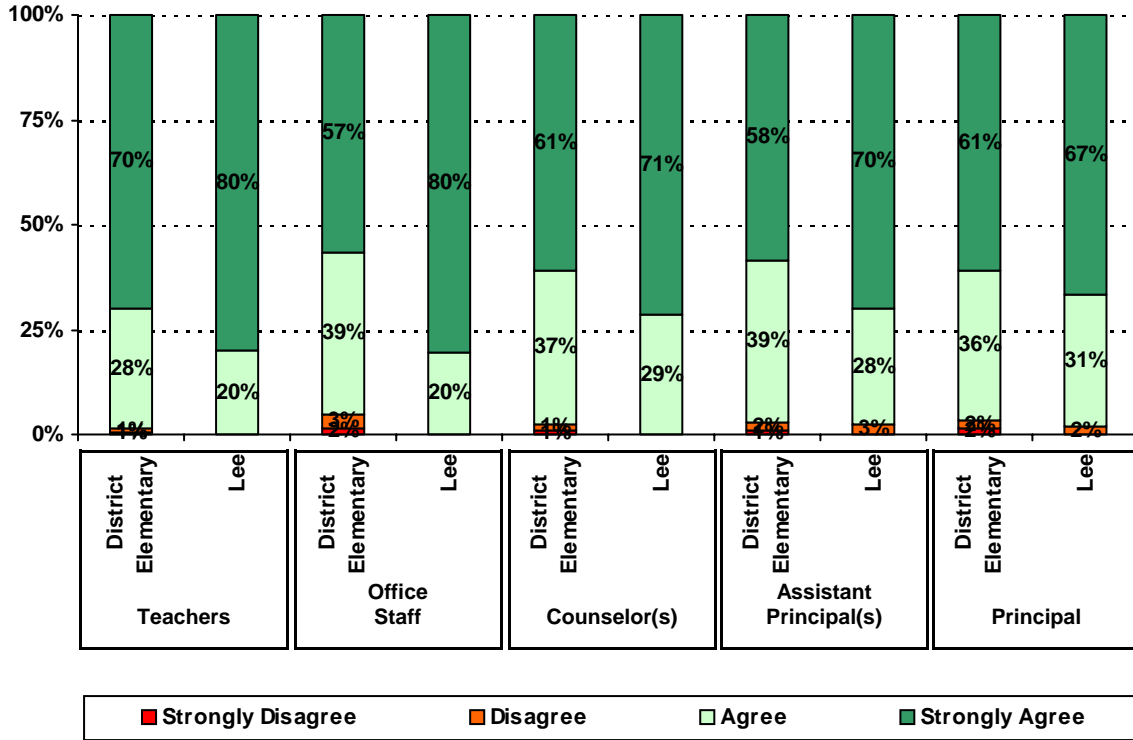
Each survey item is presented below, followed by a bar graph containing results for your campus and for all campuses at your level.

Please examine the results below to determine areas of strength and opportunities for improvement. Large percentages of "Strongly Agree" and "Agree" indicate areas in which your campus staff excel, and large percentages of "Disagree" and "Strongly Disagree" indicate areas for possible improvement.

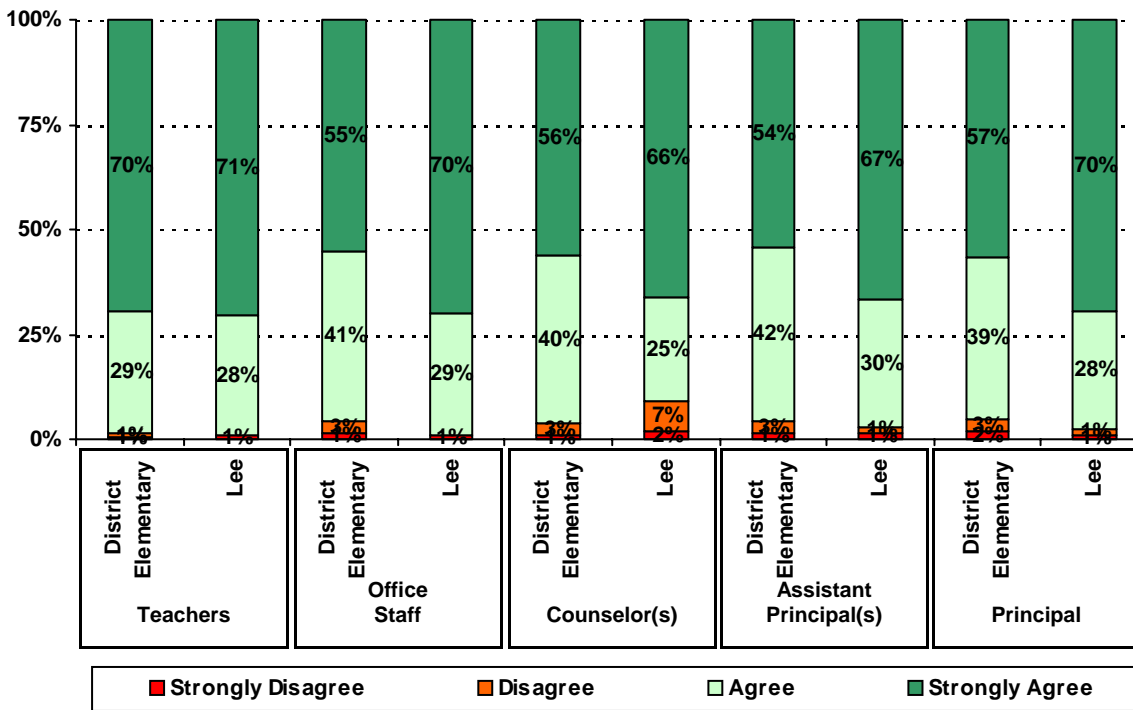
In addition, please compare the percentage of parents from your campus selecting each response option with the percentage of all AISD parents selecting each response option. If your campus percentages are very different from the percentages reported districtwide, please consider potential reasons for discrepancies.

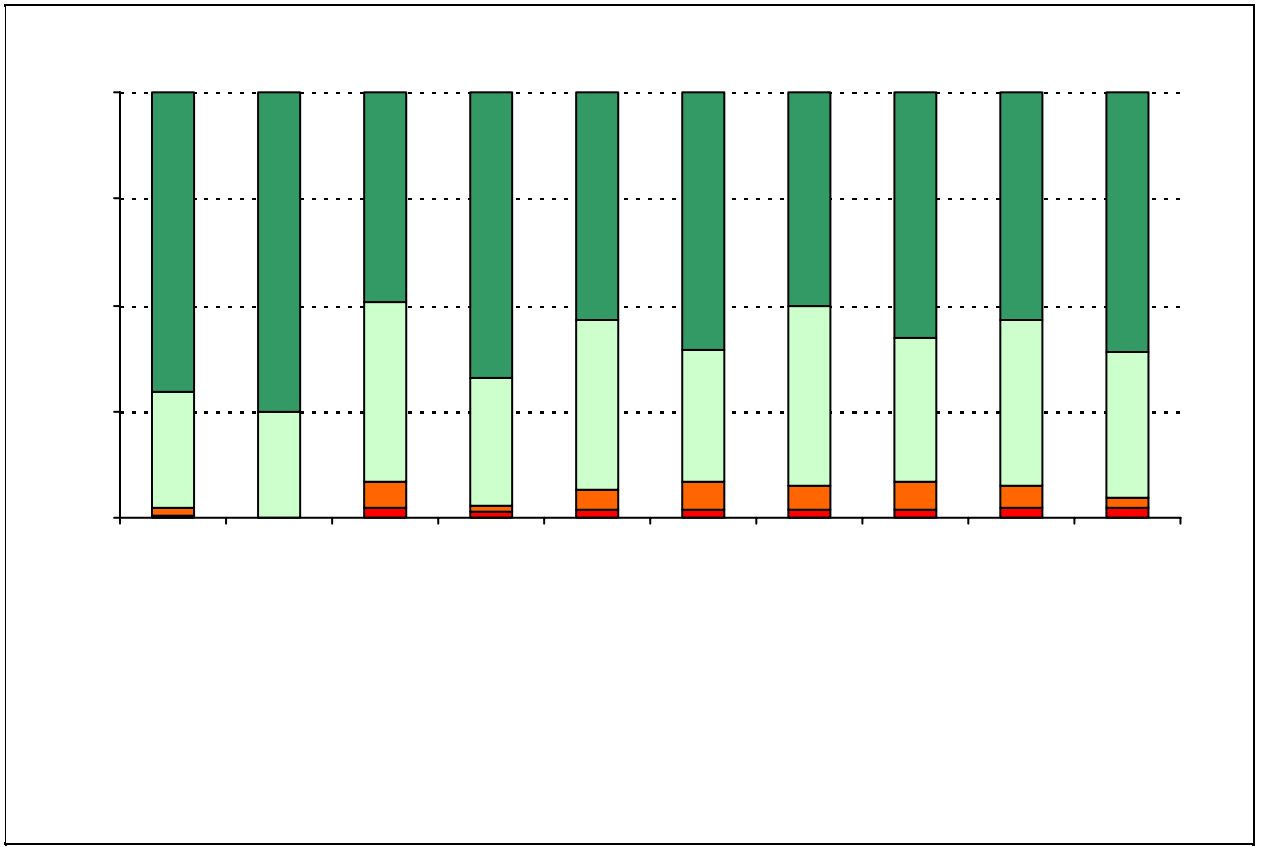
Please also review the results below for staff categories with consistently positive or negative responses. These responses may be used to identify opportunities for praise and areas for professional development.

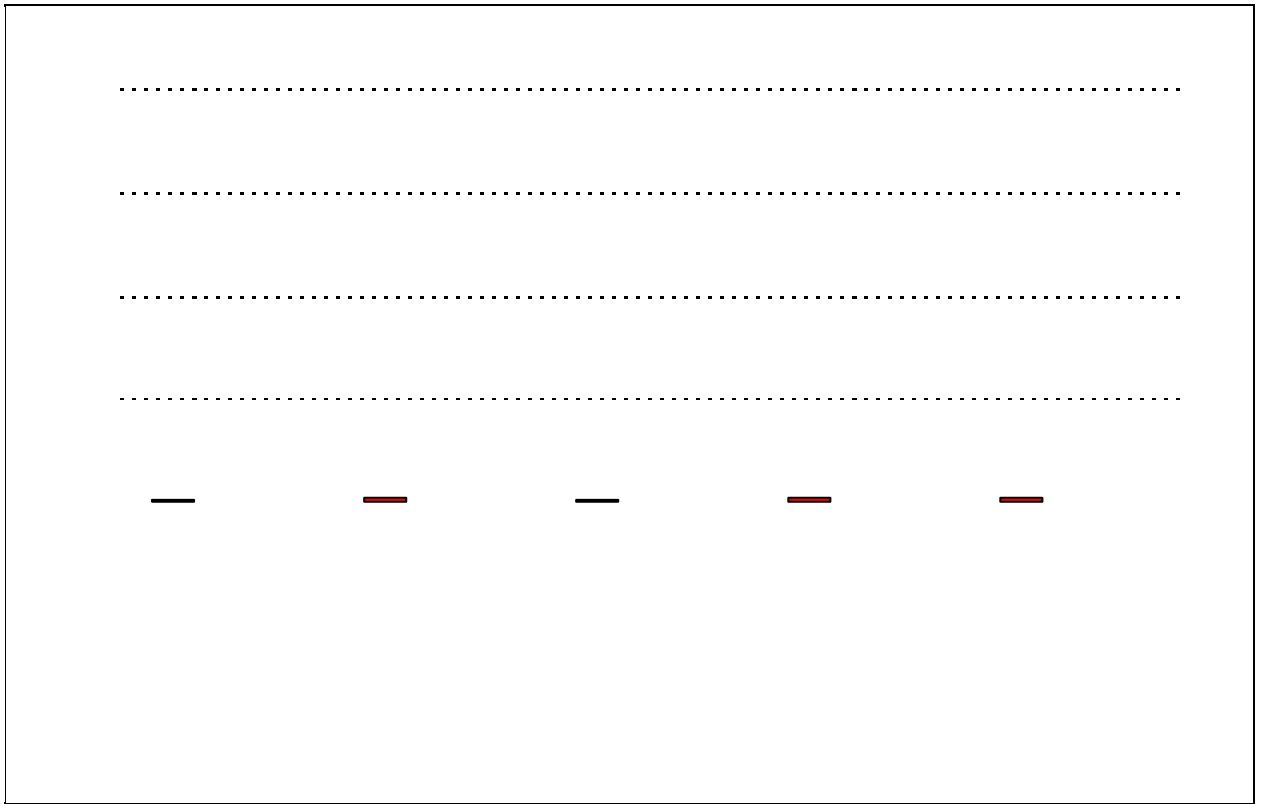
3. The following school staff treat me with courtesy and respect.

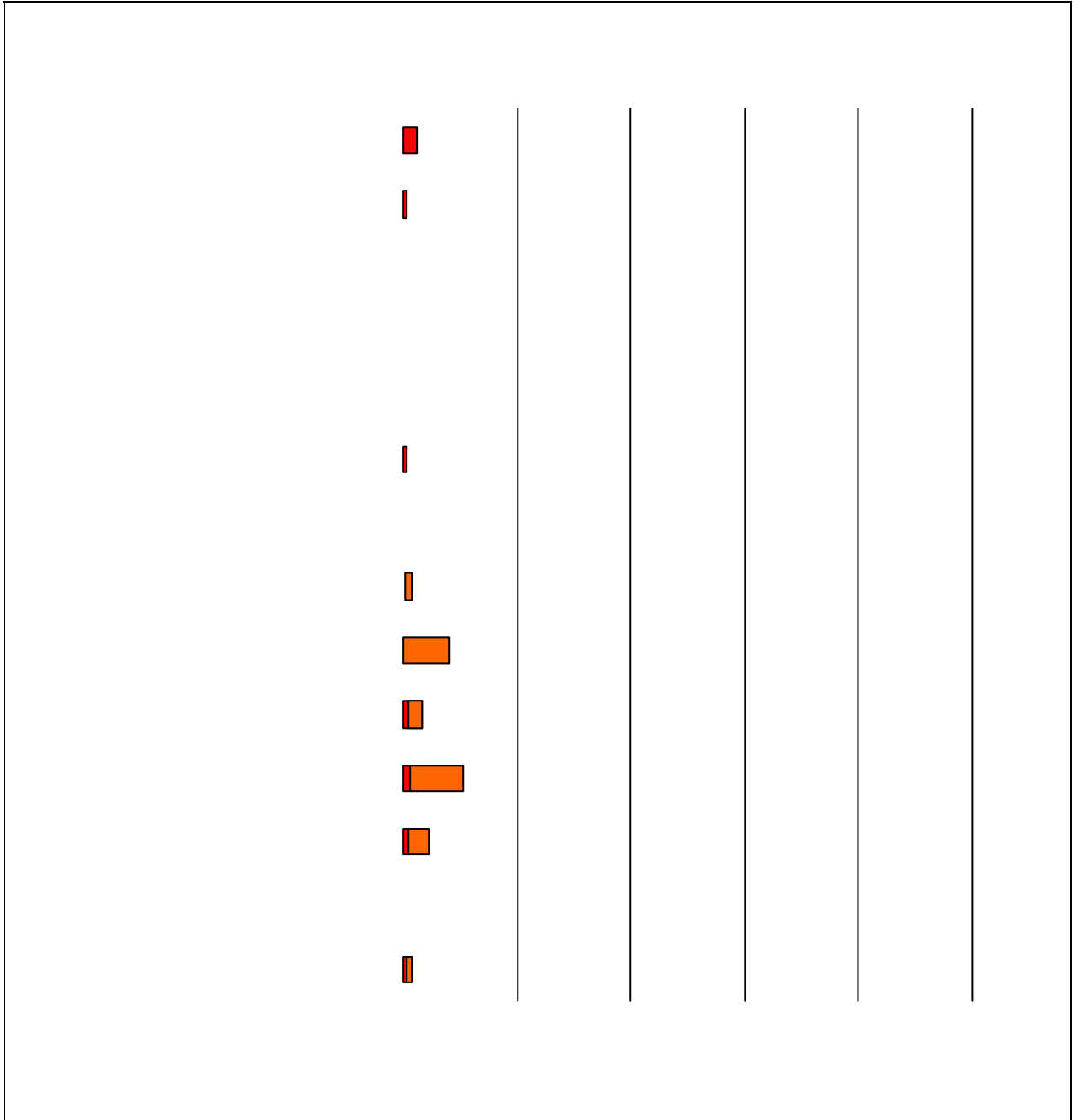


4. The following school staff provide me with opportunities for two-way communication.

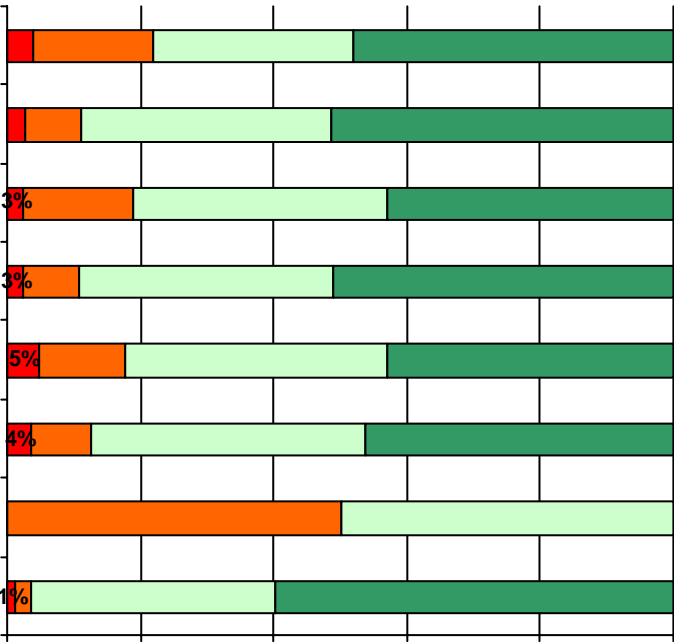








12. School staff provided me with information about the following programs:



Item Response Details

Number of Lee Elementary School Parent Responses, by Response Option

		Strongly Agree	Agree	Disagree	Strongly Disagree	Does Not Apply	Don't Know
4a.	n = 101	64	26	1	1	4	5
4b.	n = 100	46	21	1	1		
4c.	n = 99	37			1	19	24
3d.	n = 99	6--1	18	0	0	3	4
3e.	n = 100		20	0	0	0	1
4a.	n = 101	64	26	1	1	4	5
4b.	n = 100	46	21	1	1	9	22
4c.	n = 99	37	14	4	1	19	24
4d.	n = 100	60	25	0	1	8	6
4e.	n = 101	70	28	0	1	1	1
5a.	n = 96	52	29	2	2	6	5
5b.	n = 95	34	20	4	1	16	20
5c.	n = 94	29	15	3	1	20	26
5d.	n = 95	49	22	1	1	15	7
5e.	n = 99	72	24	0	0	3	0
6a.	n = 98	46	30	1	1	8	12
6b.	n = 97	34	20	3	0	13	27
6c.	n = 95	29	18	1	0	20	27
6d.	n = 96	36	18	0	0	31	11
6e.	n = 98	62	24	0	0	6	6
7a.	n = 101	63	21	2	0	1	14
7b.	n = 100	54	17	2	0	3	24
7c.	n = 99	44	17	0	0	13	25
7d.	n = 100	66	18	0	0	5	11
		75	19	0	0	0	6

11a.	n = 99	52	25	6	2	5	9
11b.	n = 100	61	37	1	0	0	1
11c.	n = 100	60	37	1	0	0	2
		63	37	0	0	0	0
11e.	n = 101	50	29	7	0	8	7
11f.	n = 101	54	31	9	1	0	6
11g.	n = 101	66	34	0	0	0	1
<hr/>							
12a.	n = 96	24	15	9	2	36	10
12b.	n = 96	18	16	7	1	43	11
		18	16	7	1	43	1124

*This item included an additional response option, 'I am not aware of AISD's academic benchmark testing.' An additional 8 parents selected this option.