



## 2004-2005 AISD Parent Survey Results

### McCallum High School

The following report contains the results of the 2004-2005 AISD Parent Survey for your campus and all AISD schools at your level. The first section of this report provides a comparison of the campus demographics and the demographics reported by parents who responded to the survey from your campus. The next section describes the percentage of parents selecting specific responses for each survey item, and the final section indicates the actual number of parents who selected each response option. Campus survey results should be examined for areas of strength and opportunities for improvement. Results for all AISD schools at your level are presented to provide a reference for comparison.

#### How many parents responded to the survey in 2003-2004 and 2004-2005, and how does this compare to the number of students in the population each year?

	Campus	District EL	District MS	District HS
<b># of Parents Responding in 2003-2004</b>	726	16,070	2,721	1,640
<b># of Students in 2003-2004</b>	1,684	42,594	15,819	19,847
<i>Ratio of Parent Respondents to Students, 2003-04</i>	<b>43.1%</b>	<b>37.7 %</b>	<b>17.2 %</b>	<b>8.3 %</b>
<b># of Parents Responding in 2004-2005</b>	631	12,137	2,007	2,700
<b># of Students in 2004-2005</b>	1,634	43,566	15,705	19,976
<i>Ratio of Parent Respondents to Students in 2004-05</i>	<b>38.6%</b>	<b>27.9 %</b>	<b>12.8 %</b>	<b>13.5 %</b>

Note: The ratio of parent respondents to students is listed above as a percentage for ease of interpretation; however, it is the number of parents who responded per 100 students enrolled.

#### What did parents report as their child's ethnicity, and how does this compare to the ethnic distribution of the student population?

Ethnicity	% of Students, as Reported by Parent Respondents	% of Students in Campus Population
<b>African American</b>	14.7%	20.2%
<b>Asian</b>	1.9%	0.8%
<b>Hispanic</b>	21.3%	24.2%
<b>Native American</b>	0.3%	0.3%
<b>White</b>	61.7%	54.5%

<b>Grade</b>	<b>% of Students, as Reported by Parent Respondents</b>	<b>% of Students in Campus Population</b>
<b>6th</b>	N/A	
<b>7th</b>	N/A	
<b>8th</b>	N/A	
<b>9th</b>	27.6%	
<b>10th</b>	21.9%	
<b>11th</b>	29%	
<b>12th</b>		

### 2004-2005 AISD Parent Survey Item Responses

Each survey item is presented below, followed by a bar graph containing results for your campus and for all campuses at your level.

Please examine the results below to determine areas of strength and opportunities for improvement. Large percentages of "Strongly Agree" and "Agree" indicate areas in which your campus staff excel, and large percentages of "Disagree" and "Strongly Disagree" indicate areas for possible improvement.

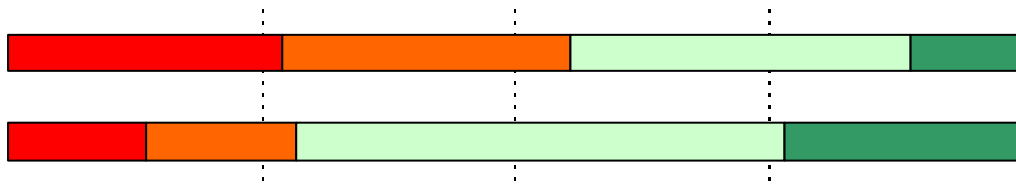
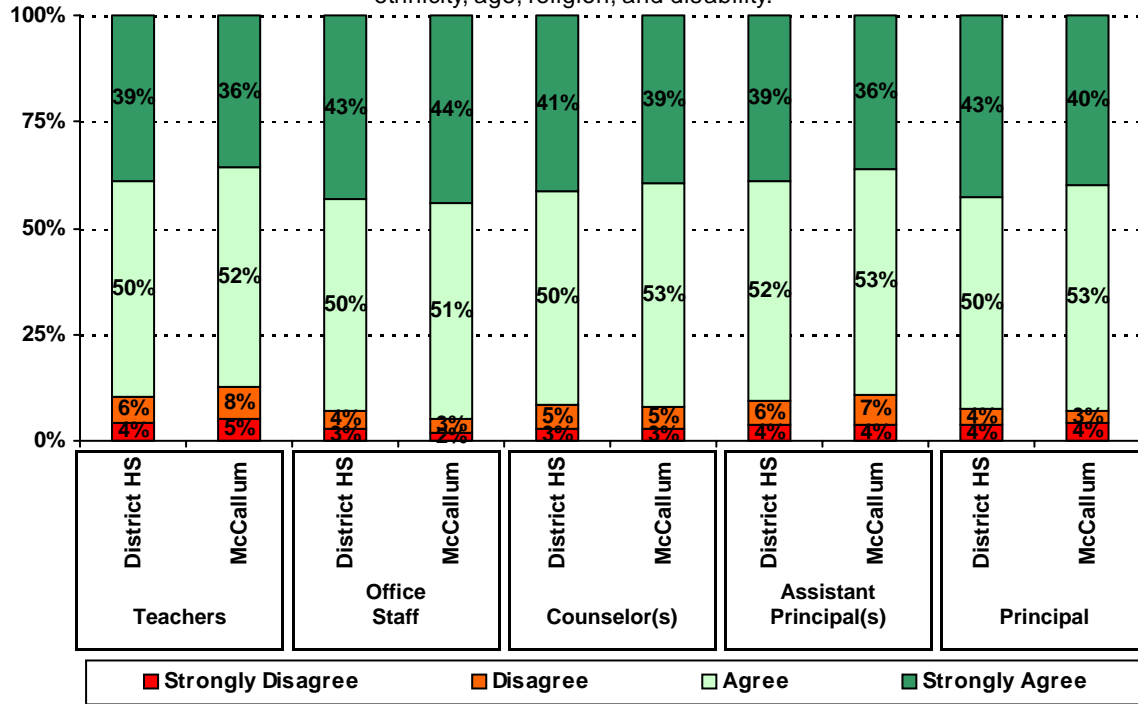
In addition, please compare the percentage of parents from your campus selecting each response option with the percentage of all AISD parents selecting each response option. If your campus percentages are very different from the percentages reported districtwide, please consider potential reasons for discrepancies.

Please also review the results below for staff categories with consistently positive or negative responses. These responses may be used to identify opportunities for praise and areas for professional development.

A rectangular box with a solid black border. Inside the box, there are two horizontal dotted lines, one above the other, spanning most of the width of the box. The space between the lines and the lines themselves are empty, intended for a drawing or diagram.

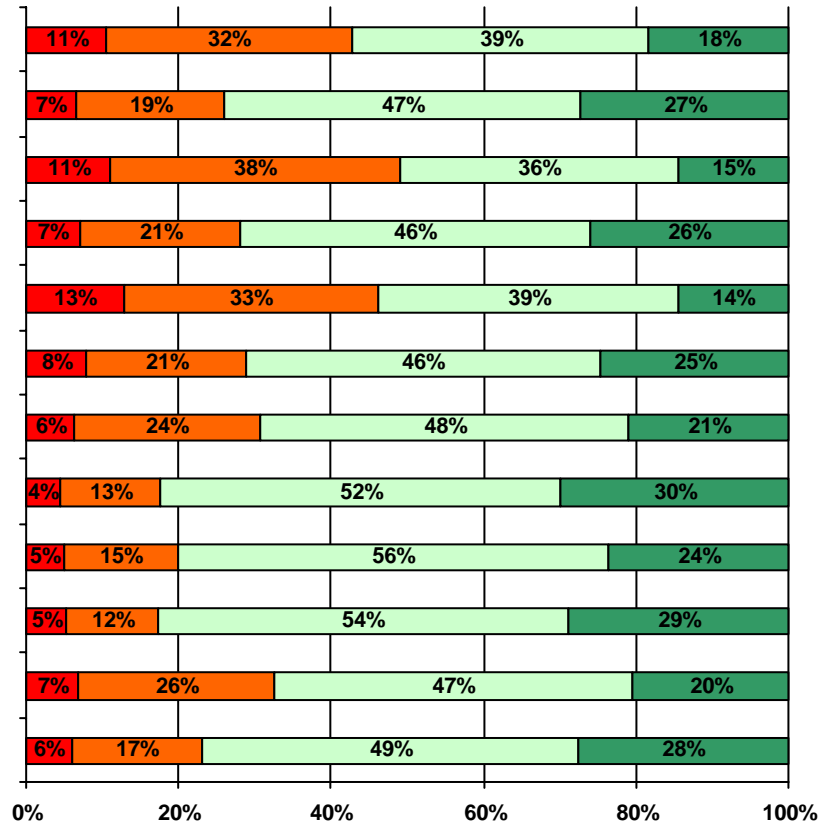


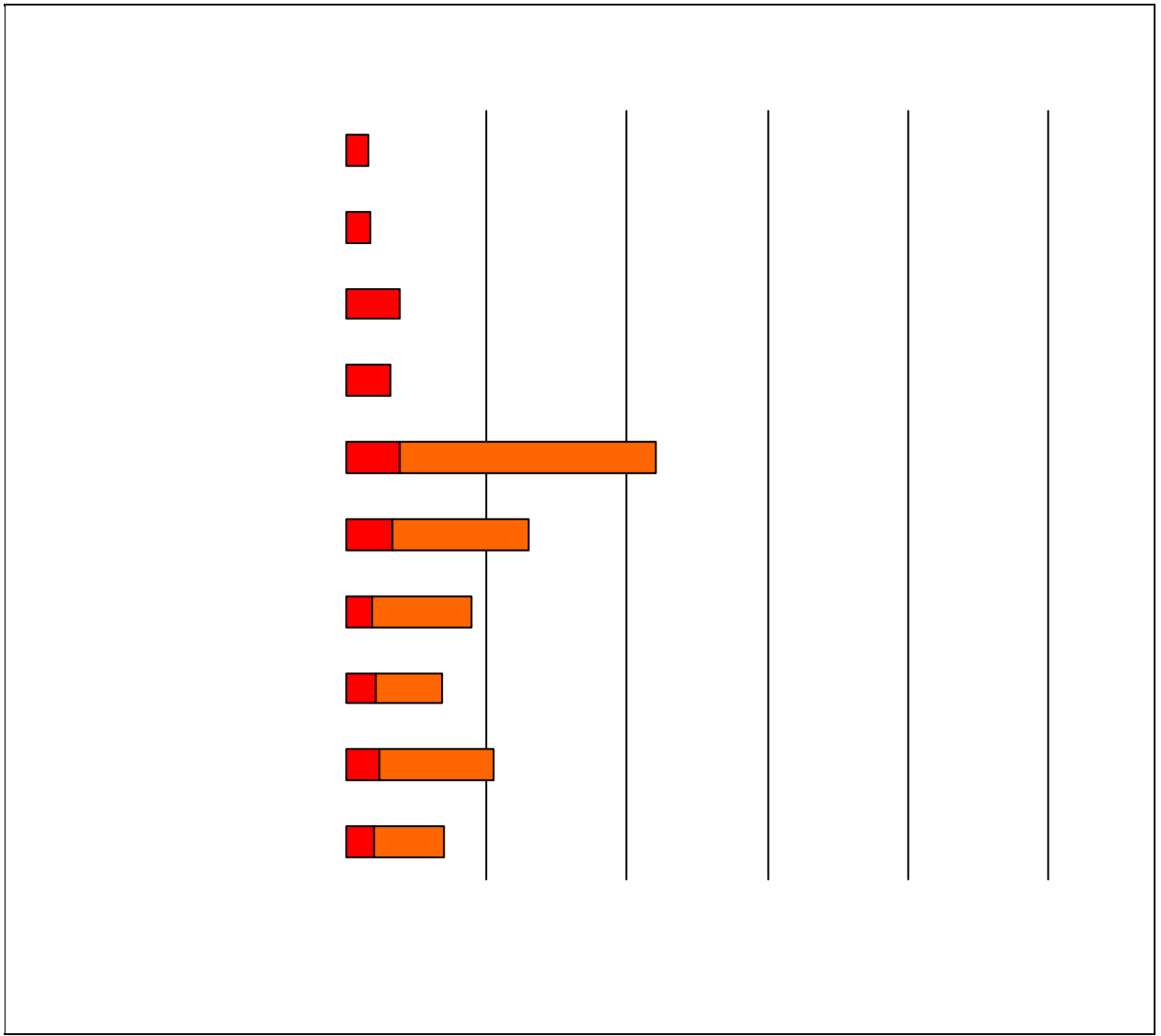
7. The following school staff treat my child fairly with respect to culture, gender, ethnicity, age, religion, and disability.



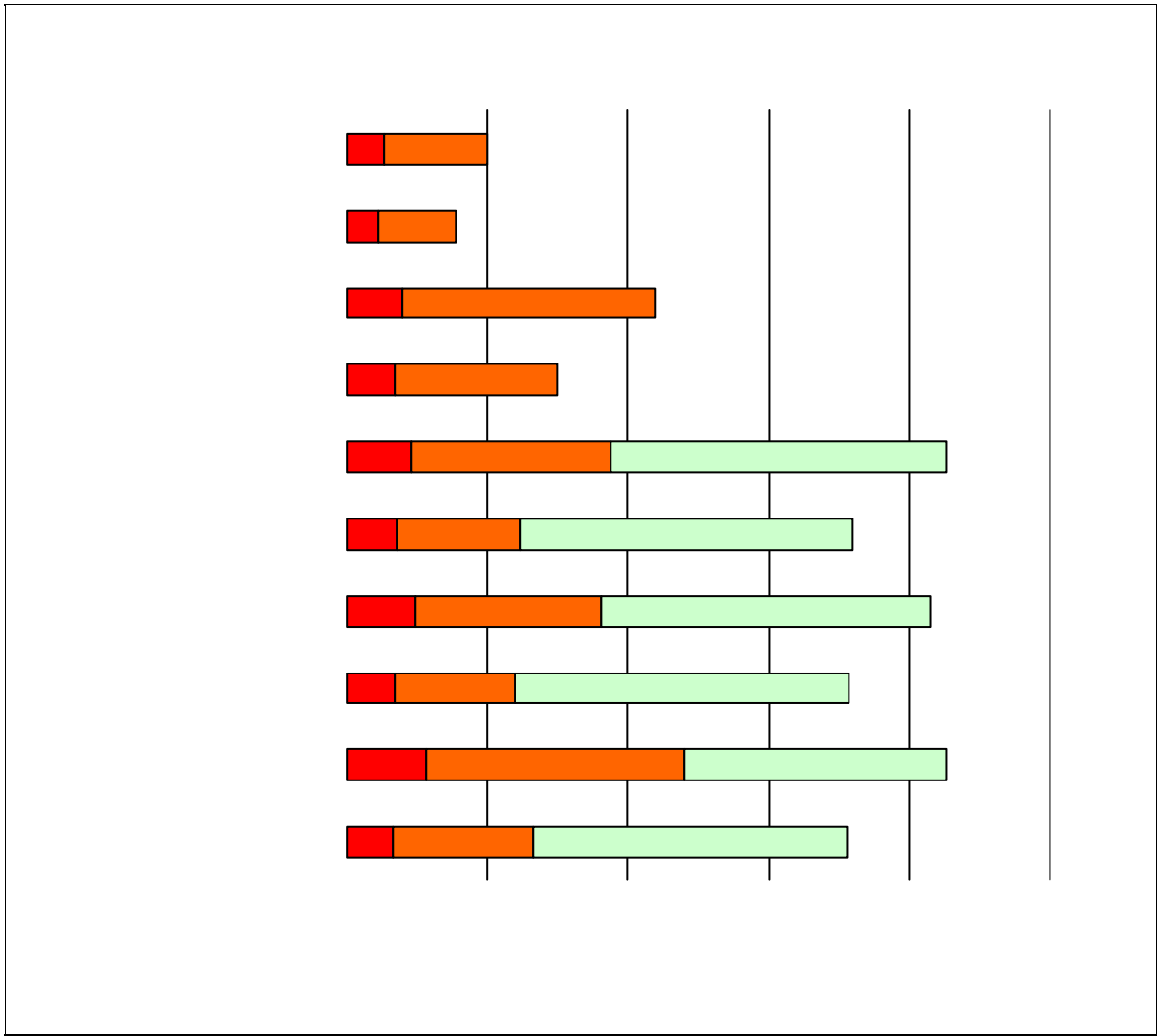


12. School staff provided me with information about the following programs :









		Strongly Agree	Agree	Disagree	Strongly Disagree	Does Not Apply	Don't Know
<b>3a.</b>	<b>n = 617</b>	171	224	14	15	40	153
<b>3b.</b>	<b>n = 616</b>	148	212	20	17	40	179
<b>3c.</b>	<b>n = 620</b>	252	301	17	9	7	34
<b>3d.</b>	<b>n = 615</b>	250	243	25	10	21	66
<b>3e.</b>	<b>n = 616</b>	171	307	62	25	14	37

Number of McCallum High School Parent Responses, by Response Option (Continued)

		<b>Strongly Agree</b>	<b>Agree</b>	<b>Disagree</b>	<b>Strongly Disagree</b>	<b>Does Not Apply</b>	<b>Don't Know</b>
<b>11a.</b>	<b>n = 621</b>	158	336	60	25	9	33
<b>11b.</b>	<b>n = 620</b>	174	378	31	17	4	16
<b>11c.</b>	<b>n = 617</b>	173	366	38	12	6	22
<b>11d.</b>	<b>n = 618</b>	194	351	41	14	2	16
<b>11e.</b>	<b>n = 0</b>	0	0	0	0	0	0
<b>11f.</b>	<b>n = 0</b>	0	0	0	0	0	0
<b>11g.</b>	<b>n = 617</b>	171	378	35	12	1	20
<b>12a.</b>	<b>n = 614</b>	59	125	103	34	195	98
<b>12b.</b>	<b>n = 606</b>	42	105	110	32	197	120
<b>12c.</b>	<b>n = 608</b>	59	162	137	53	95	102
<b>12d.</b>	<b>n = 614</b>	105	241	122	31	40	75
<b>13a.</b>	<b>n = 621</b>	159	357	57	19	9	20
<b>13b.</b>	<b>n = 620</b>	77	222	190	41	25	65
<b>13c.</b>	<b>n = 618</b>	77	214	190	39	26	72
<b>13d.</b>	<b>n = 613</b>	127	295	73	19	80	19
<b>13e.</b>	<b>n = 616</b>	114	301	85	25	56	35

\*This item included an additional response option, 'I am not aware of AISD's academic benchmark testing.' An additional 34 parents selected this option.