



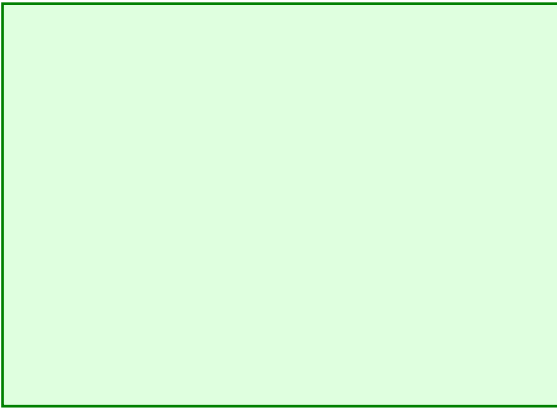
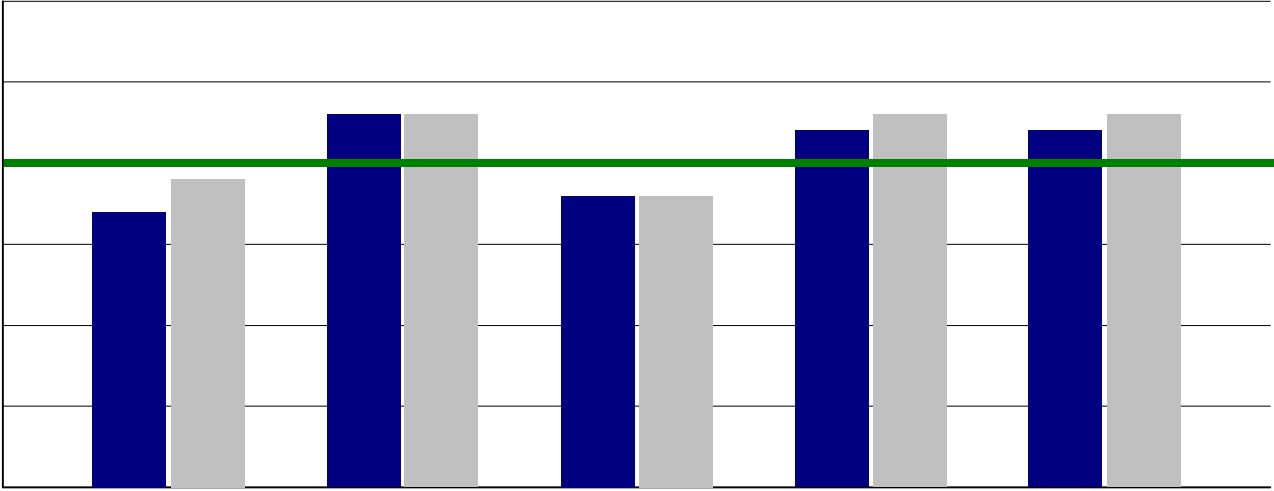
2011-2012 AISD Student Climate Survey Mendez Middle School

Table 1. Number of respondents for:
Mendez All
Middle Schools

Note.

Table 2. Response rate by grade for Mendez, 2011-2012

Table 3. Distribution of responses by ethnicity/race for Mendez relative to Mendez's school population, 2011-2012





| | |
|--|--|
| | |
| | |
| | |

| | |
|--|--|
| | |
| | |
| | |

Student engagement Mendez

| | |
|--|--|
| | |
| | |

Note. never always

Academic self-confidence Mendez

| | |
|--|--|
| | |
| | |

Teacher expectations Mendez

| | |
|--|--|
| | |
| | |

Note. Challenge never always

37. I will go to college after high school. Mendez 2011-2012

| | |
|--|--|
| | |
| | |