



2004-2005 AISD Parent Survey Results

Odom Elementary School

The following report contains the results of the 2004-2005 AISD Parent Survey for your campus and all AISD schools acampo5selected each response option. Campus survey results should be examined for areas of strength and opportunities for improvement. Results for all AISD schools at your level are presented to provide a reference for comparison.

How many parents responded to the survey in 2003-2004 and 2004-2005, and how does this compare to the number of students in the population each year?

	Campus	District EL	District MS	District HS
# of Parents Responding in 2003-2004	413	16,070	2,721	1,640
# of Students in 2003-2004	748	42,594	15,819	19,847
<i>Ratio of Parent Respondents to Students, 2003-04</i>	<i>55.2%</i>	<i>37.7 %</i>	<i>17.2 %</i>	<i>8.3 %</i>
# of Parents Responding in 2004-2005	284	12,137	2,007	2,700
# of Students in 2004-2005	763	43,566	15,705	19,976
<i>Ratio of Parent Respondents to Students in 2004-05</i>	<i>37.2%</i>	<i>27.9 %</i>	<i>12.8 %</i>	<i>13.5 %</i>

Note: 2(37)26 ratm21f76.00264.(37)T264.(1(54(13)-4264.9tm21f76.00)fr76.00e)-3(ntm21f7e)-3ne(1sp00)rf3856 6TJ
 00 responded per 100 students enrolled.

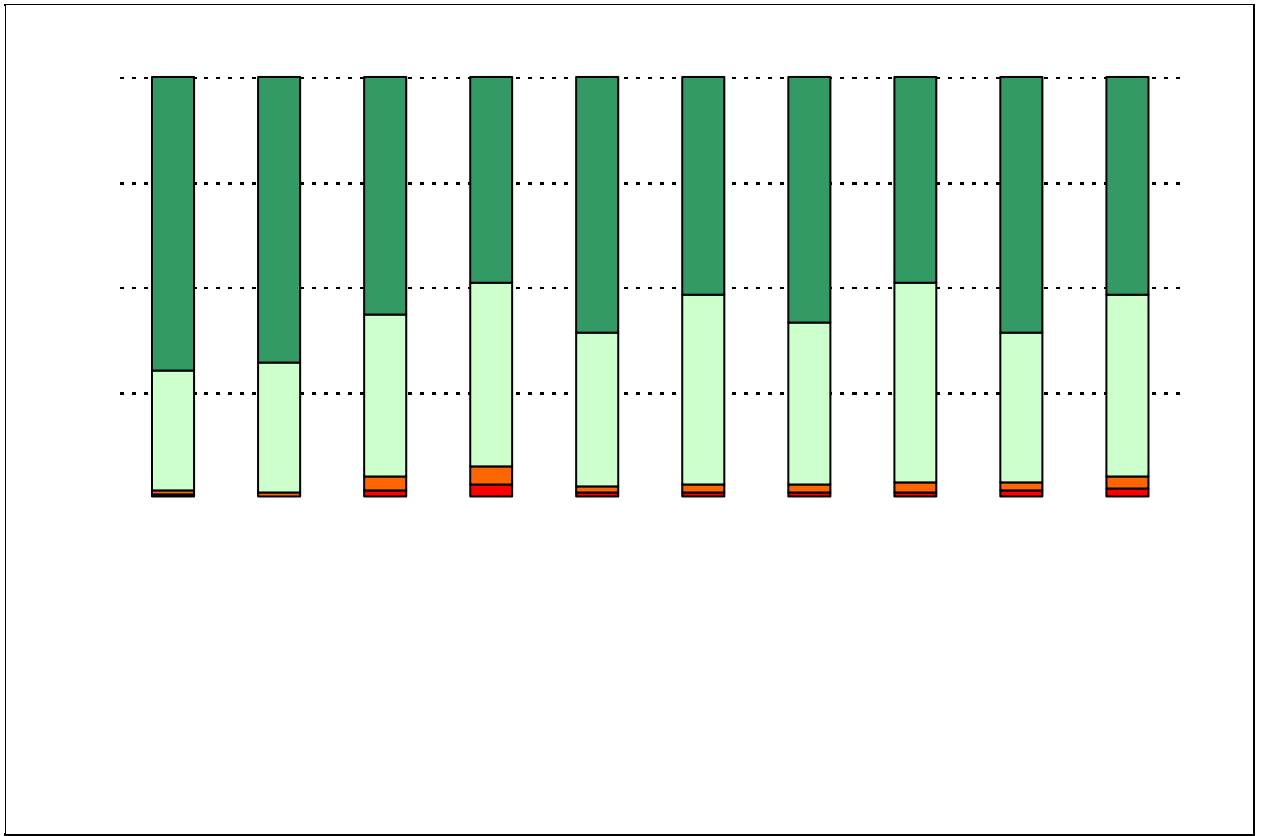
What did parents report as their child's ethnicity, and how does this compare to the ethnic distribution of the student population?

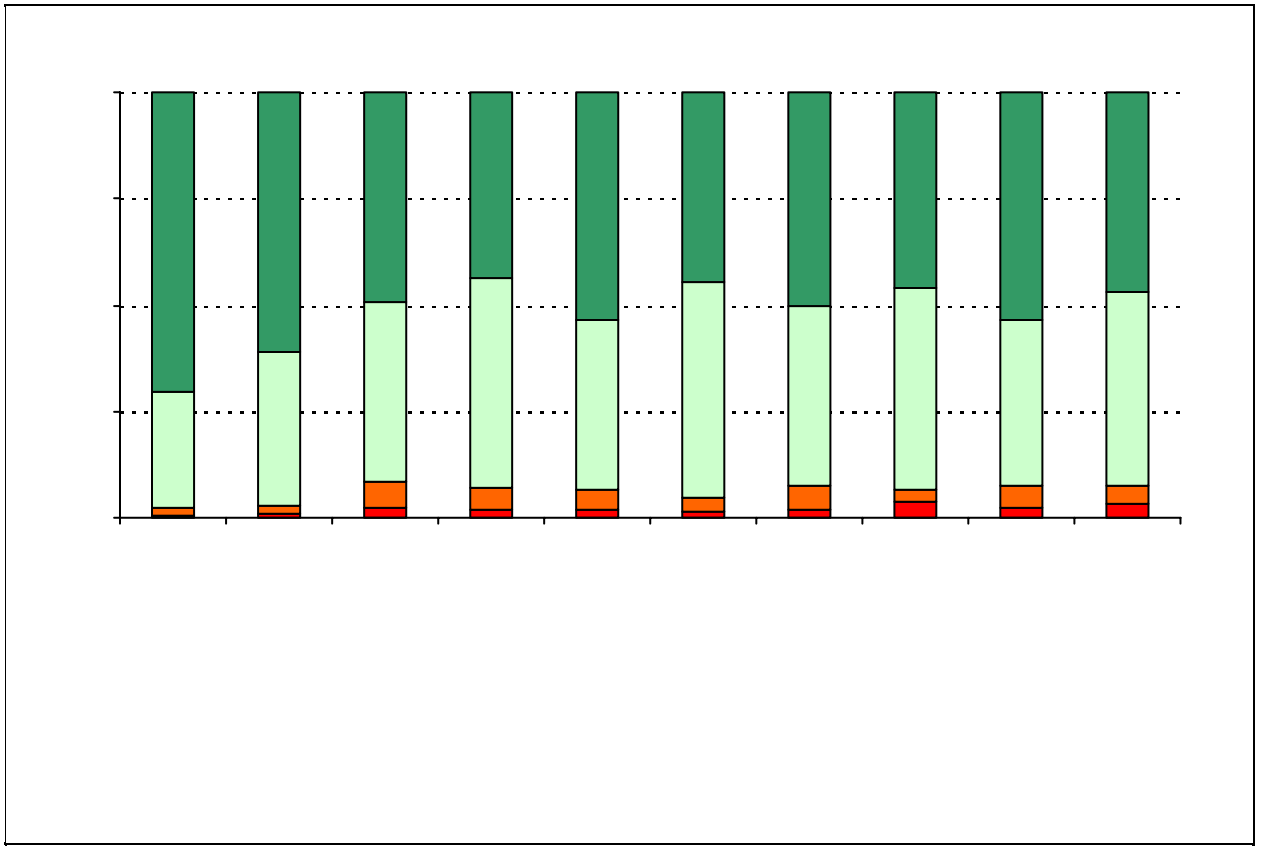
Ethnicity	% of Students, as Reported by Parent Respondents	% of Students in Campus Population
African American	10.5%	10.9%
Asian	0.8%	0.3%
Hispanic	71.0%	73.9%
Native American	2.5%	0.3%
White	15.1%	14.7%

What did parents report as their child's grade, and how does this compare to the grade level

Grade	% of Students, as Reported by Parent Respondents	% of Students in Campus Population
EC	N/A	0.0%
PK	11.7%	13.2%
K	13.6%	15.5%
1st	14.8%	13.8%
2nd	17.0%	15.6%
3rd	15.9%	15.7%
4th	14.8%	13.6%
5th	12.1%	12.6%
6th	N/A	N/A

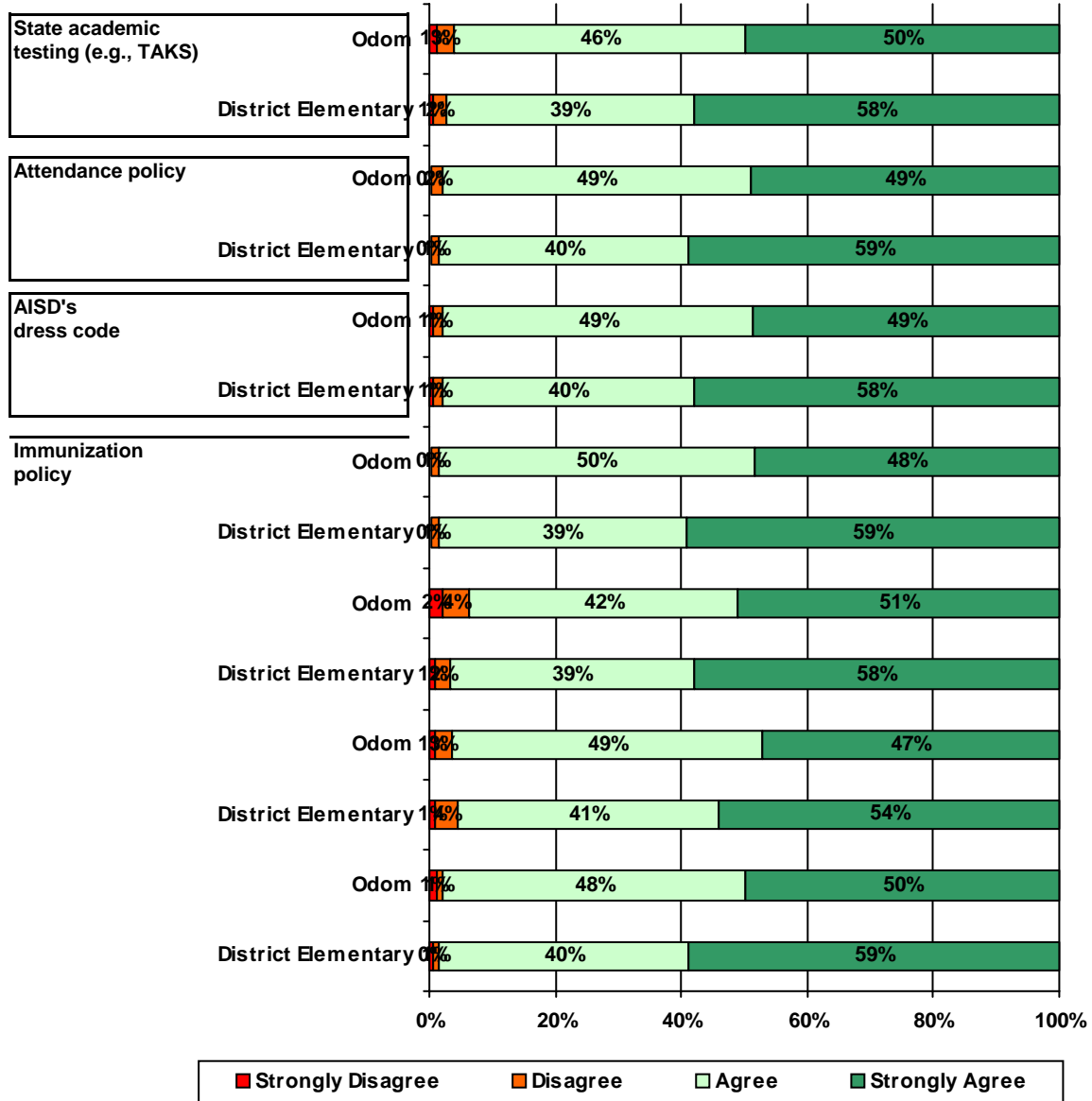
Note: Student population data are based on Fall 2003 and Fall 2004 PEIMS data submitted by the district to TEA, and may differ from the official AEIS report.



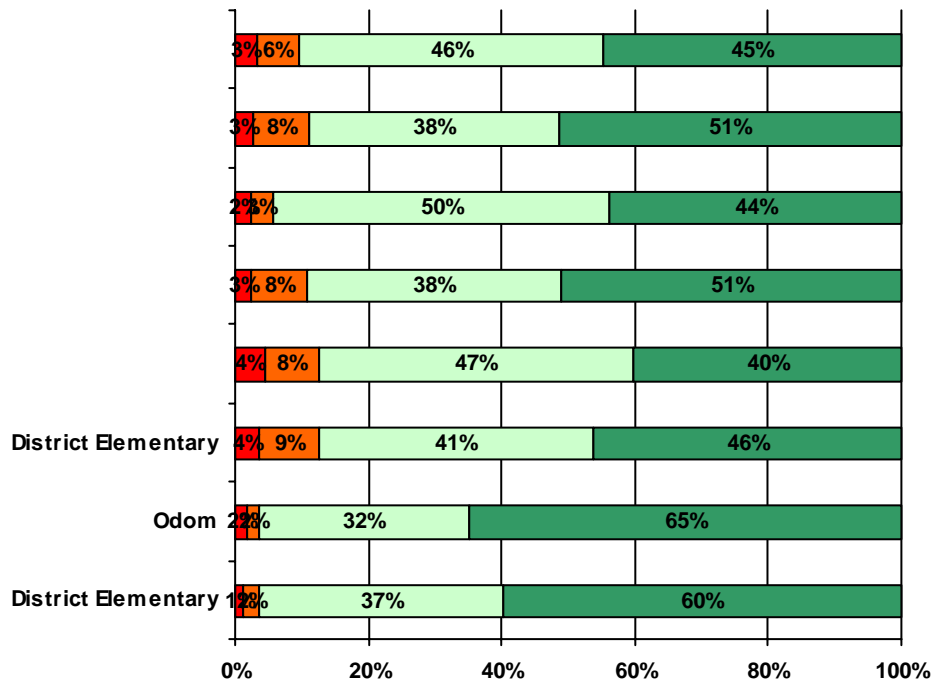


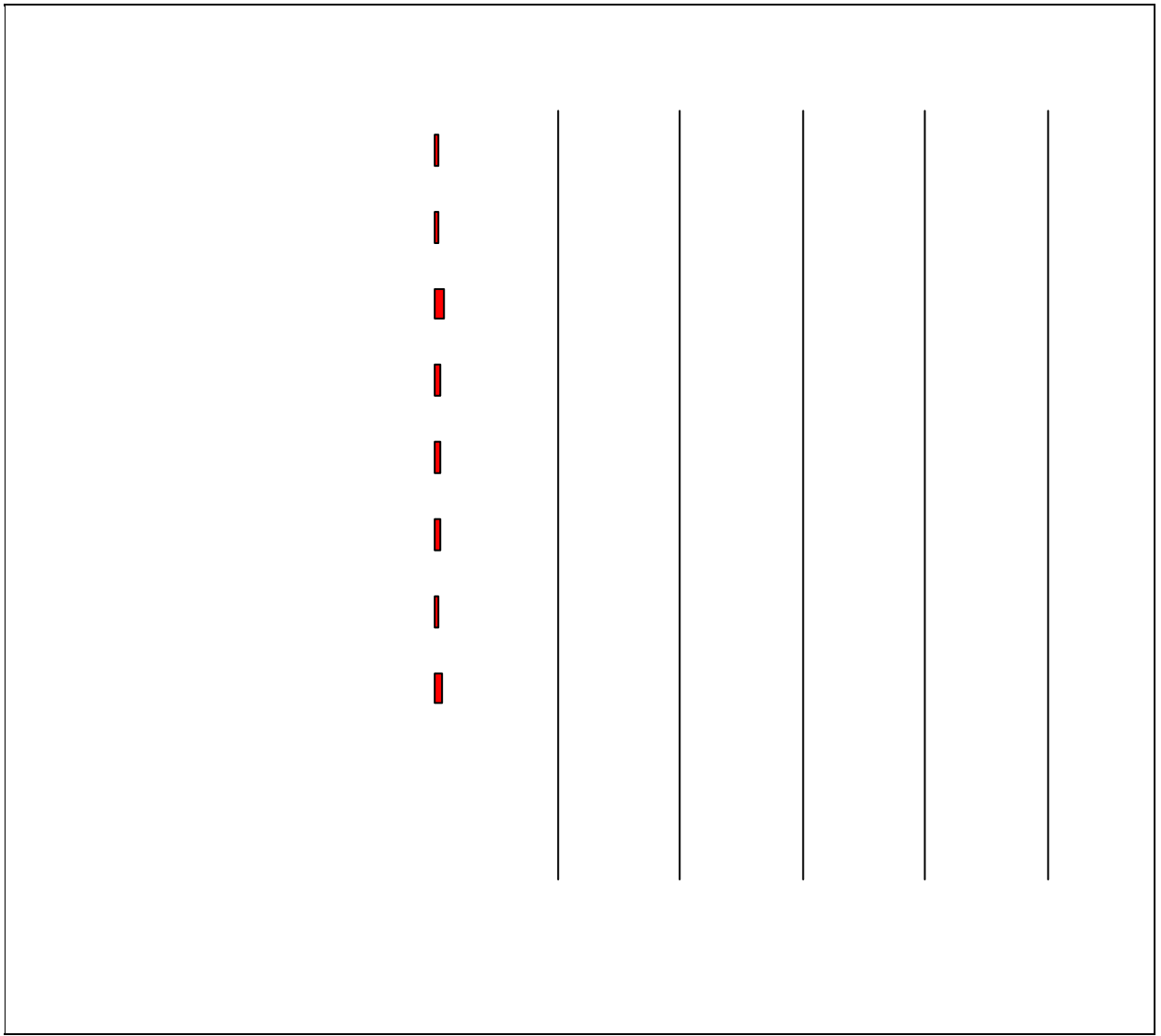
A rectangular box with a solid black border. Inside the box, there are four horizontal dotted lines, evenly spaced, intended for writing text.

11. School staff provided me with information about the following school and district policies:



12. School staff provided me with information about the following programs:

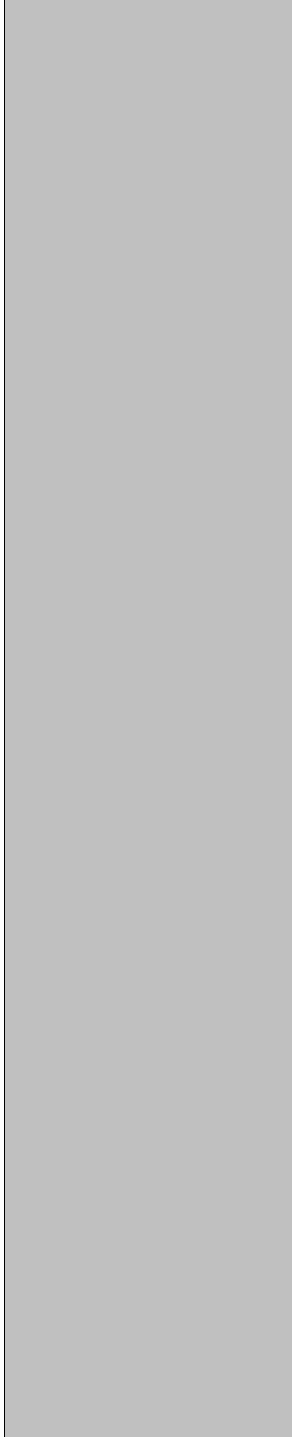




Strongly

Disagree

**Strongly
Disagree**



Number of Odom Elementary School Parent Responses, by Response Option (Continued)

		Strongly Agree	Agree	Disagree	Strongly Disagree	Does Not Apply	Don't Know
11a.	n = 278	127	118	7	3	4	19
11b.	n = 277	132	132	5	1	0	7
11c.	n = 278	130	132	4	2	1	9
11d.	n = 273	129	133	3	1	0	7
11e.	n = 269	119	99	10	5	13	23
11f.	n = 273	116	121	7	2	4	23
11g.	n = 275	133	128	3	3	0	8
12a.	n = 275	93	95	13	7	32	35
12b.	n = 275	91	105	7	5	41	26
12c.	n = 275	92	107	19	10	9	38
12d.	n = 275	37	18	1	1	0	7
13a.	n = 276	152	110	4	2	2	6
13b.	n = 275	130	114	8	4	6	13
13c.	n = 273	122	95	12	2	18	24
13d.	n = 270	114	95	10	1	33	17
13e.	n = 274	158	105	2	1	5	3

*This item included an additional response option, 'I am not aware of AISD's academic benchmark testing.' An additional 32 parents selected this option.