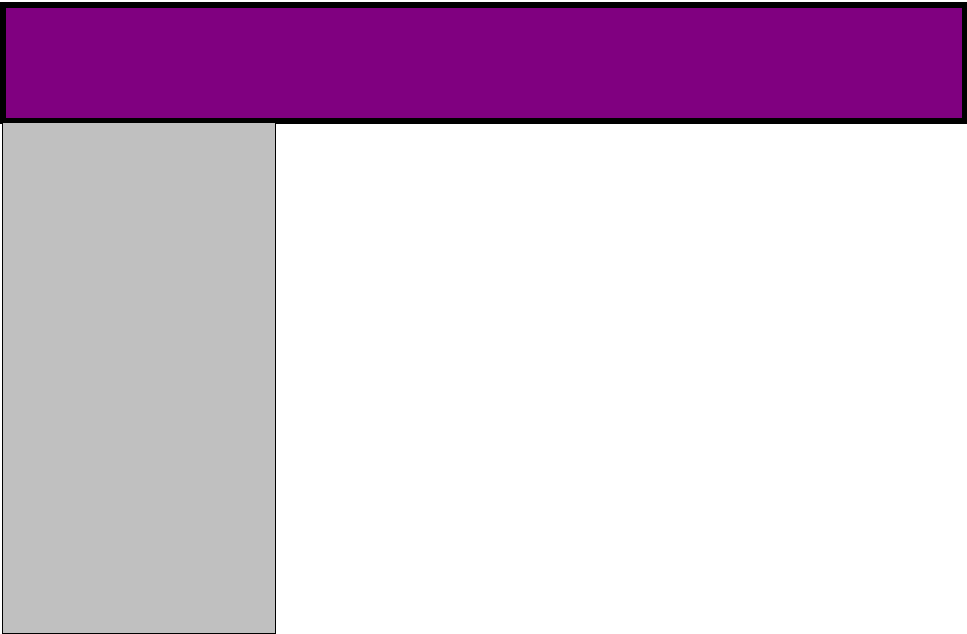
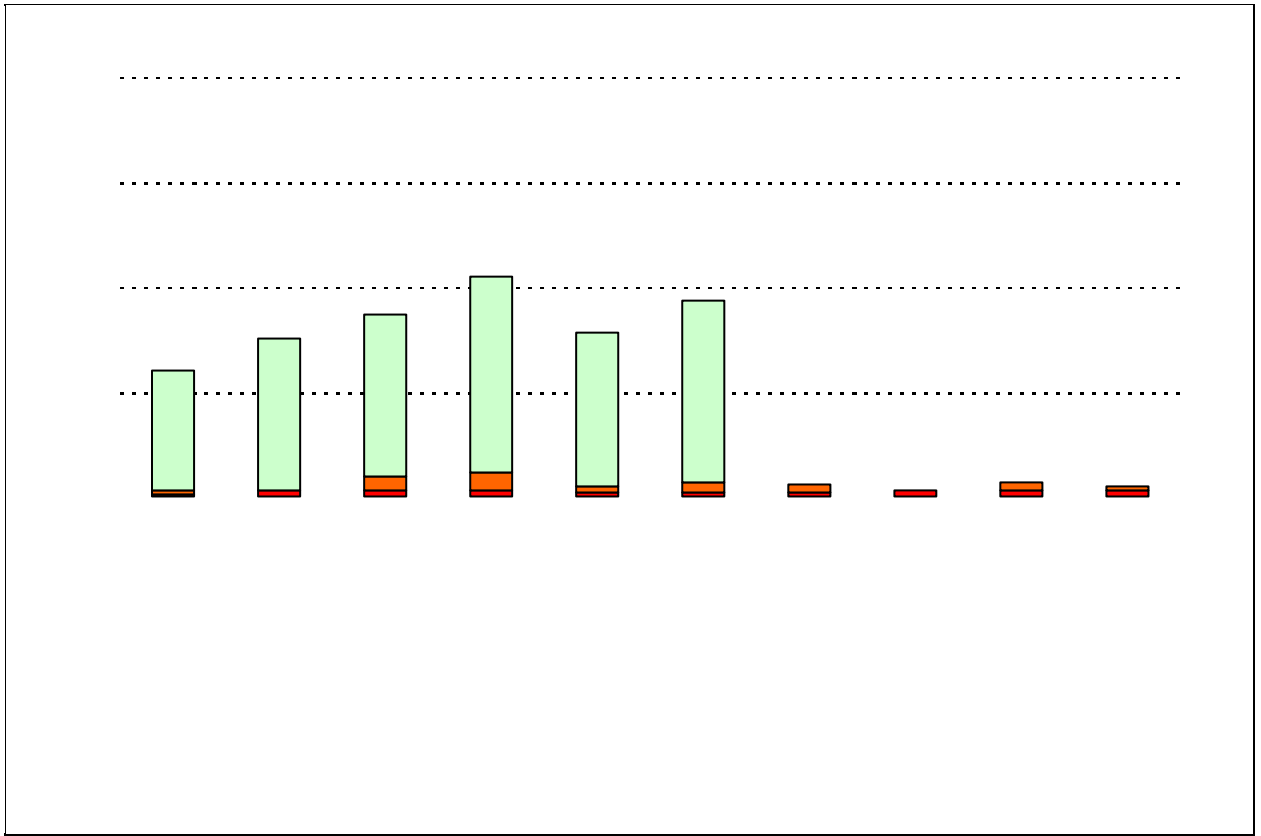
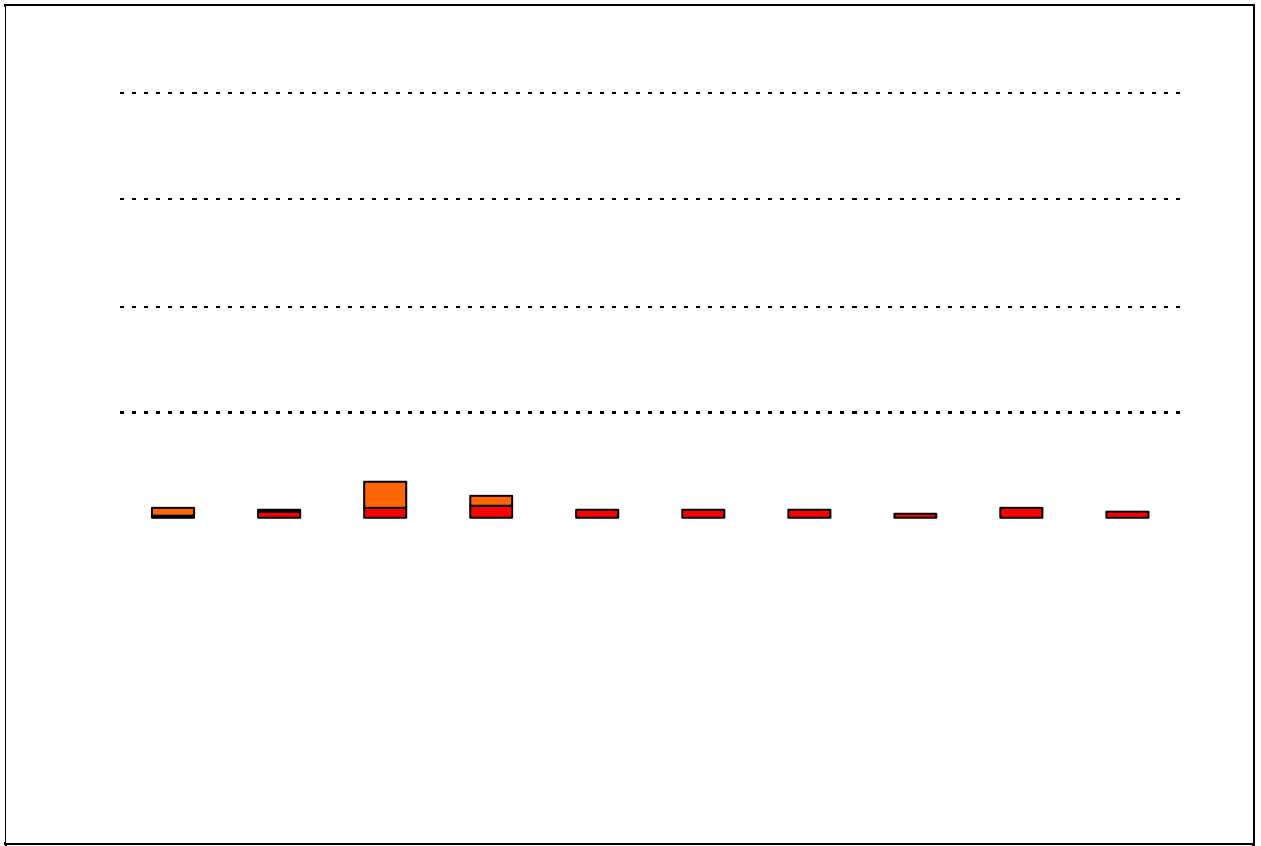


	<b>Campus</b>	<b>District EL</b>	<b>District MS</b>	<b>District HS</b>
<b># of Parents Responding in 2003-2004</b>	158	16,070	2,721	1,640
<b># of Students in 2003-2004</b>	280	42,594	15,819	19,847
<b><i>Ratio of Parent Respondents to Students, 2003-04</i></b>	<b>56.4%</b>	<b>37.7 %</b>	<b>17.2 %</b>	<b>8.3 %</b>
<b># of Parents Responding in 2004-2005</b>	174	12,137	2,007	2,700
<b># of Students in 2004-2005</b>	286	43,566	15,705	19,976
<b><i>Ratio of Parent Respondents to Students in 2004-05</i></b>	<b>60.8%</b>	<b>27.9 %</b>	<b>12.8 %</b>	<b>13.5 %</b>

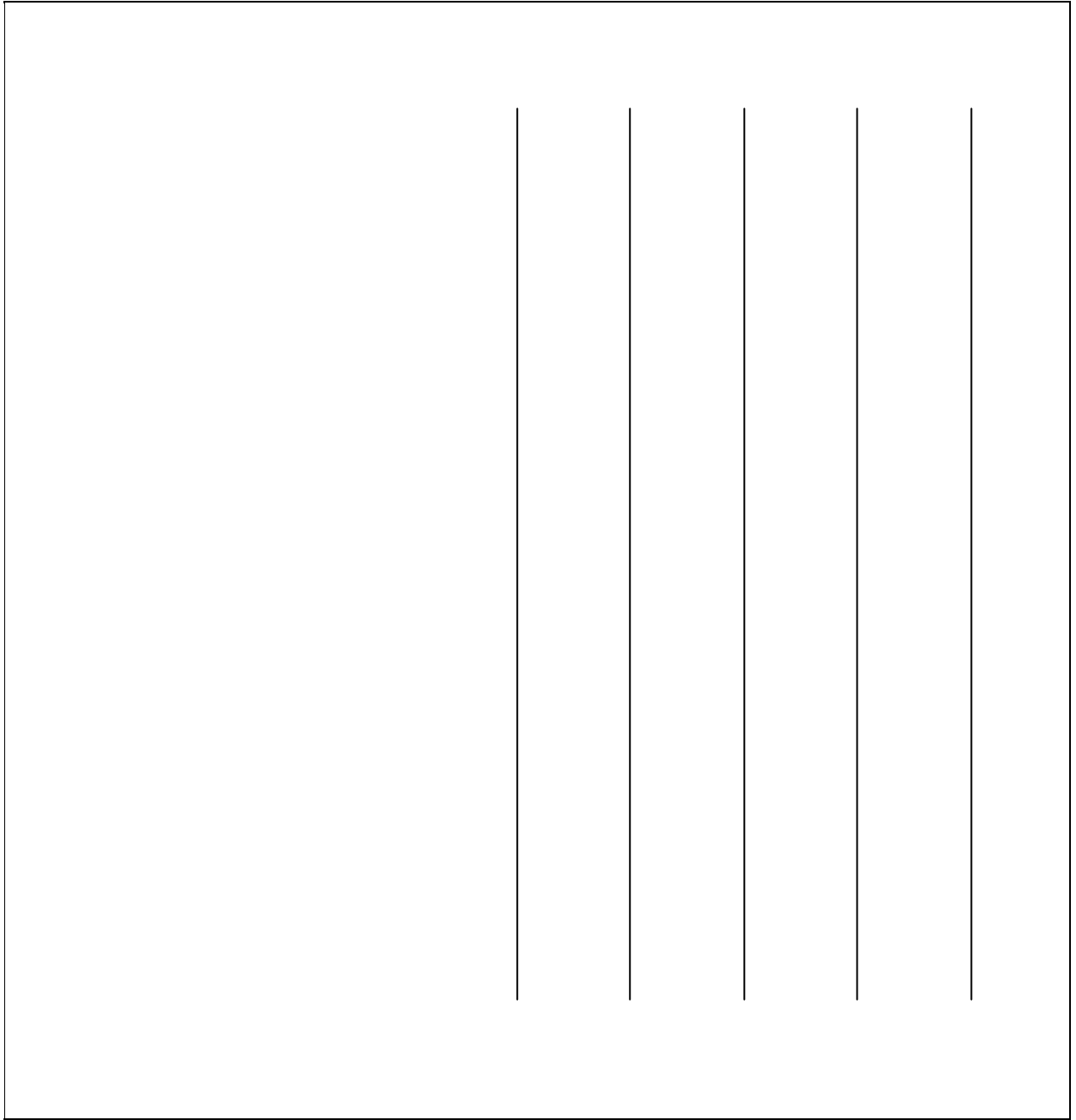
5 6 . 4 %



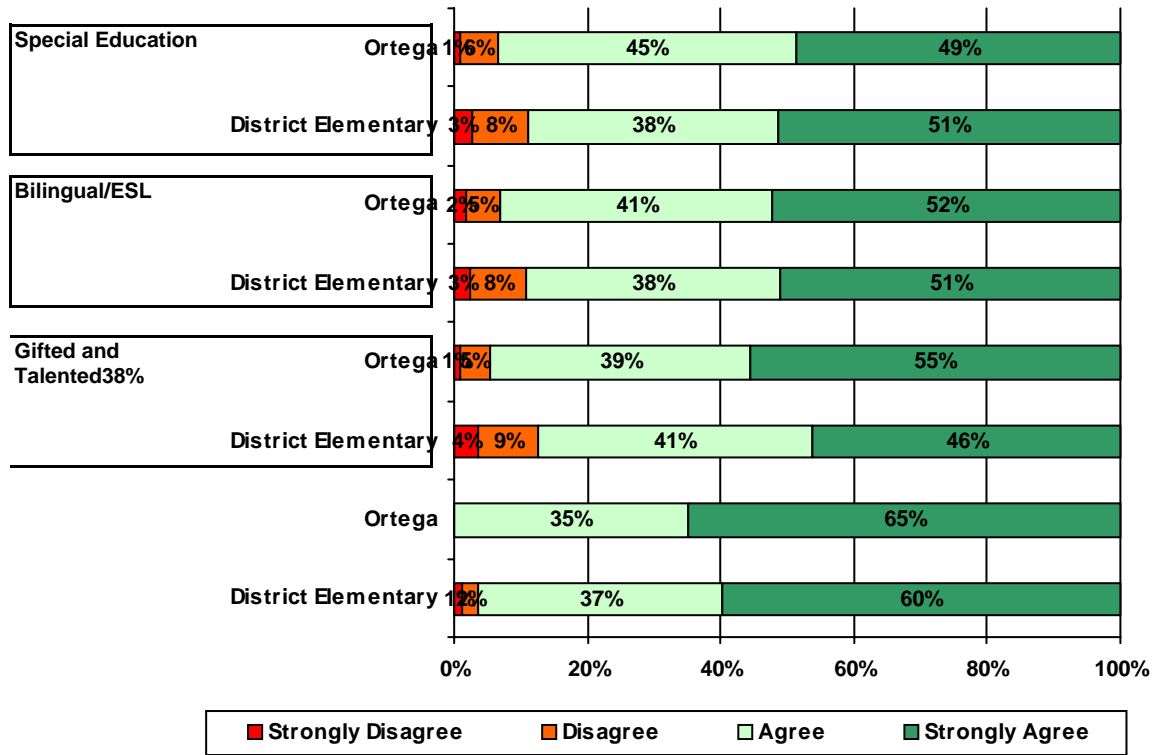




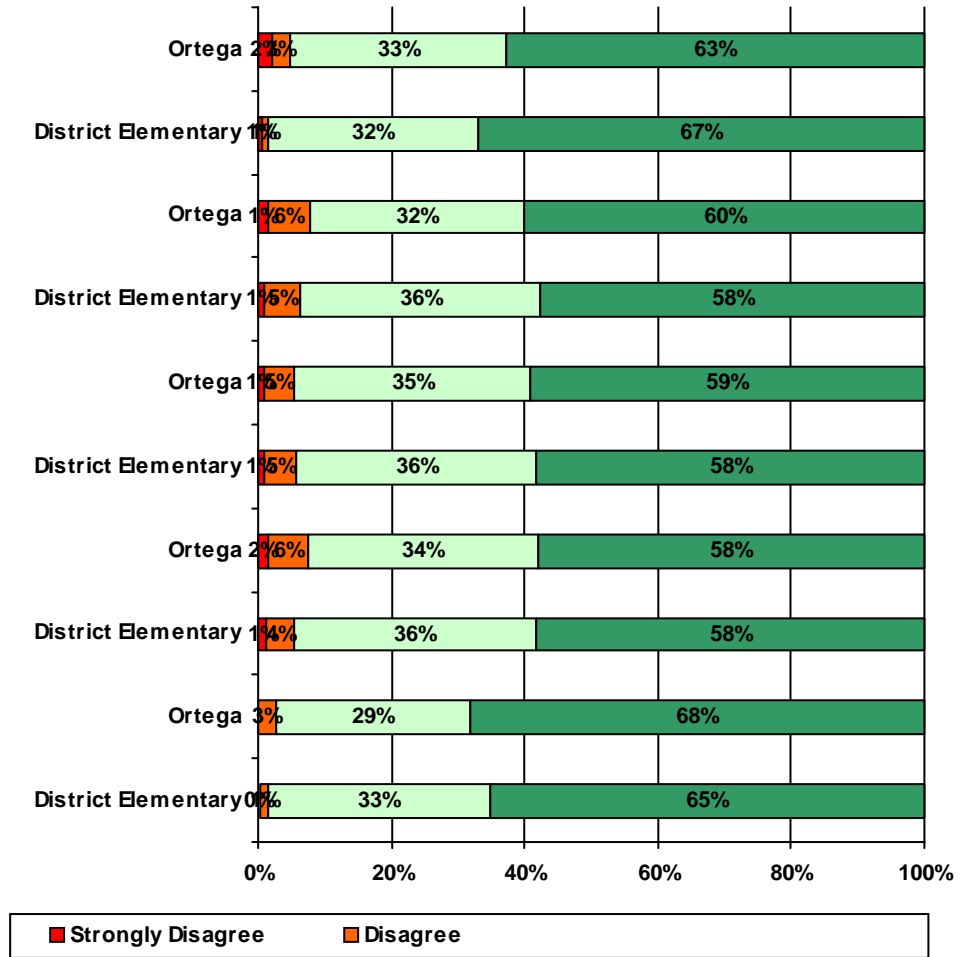




12. School staff provided me with information about the following programs:



13. School staff provided me with the following information about my child:





		Strongly Agree	Agree	Disagree	Strongly Disagree	Does Not Apply	Don't Know
<b>3a.</b>	<b>n = 157</b>	71	62	1	2	4	17
		76	56	0	2	4	

<b>11a.</b>	<b>n = 154</b>	78	53	6	1	5	11
<b>11b.</b>	<b>n = 155</b>	86	52	6	0	4	7
<b>11c.</b>	<b>n = 154</b>	74	57	6	1	7	9
<b>11d.</b>	<b>n = 151</b>	77	55	5	0	5	9
<b>11e.</b>	<b>n = 144</b>	72	49	7	1	10	5

\*This item included an additional response option, 'I am not aware of AISD's academic benchmark testing.' An additional 15 parents selected this option.