



2004-2005 AISD Parent Survey Results

Palm Elementary School

The following report contains the results of the 2004-2005 AISD Parent Survey for your campus and all AISD schools acampo5selected each response option. Campus survey results should be examined for areas and opportunities for improvement. Results for all AISD schools at your level are presented to provide a reference for comparison.

How many parents responded to the survey in 2003-2004 and 2004-2005, and how does this compare to the number of students in the population each year?

	Campus	District EL	District MS	District HS
# of Parents Responding in 2003-2004	192	16,070	2,721	1,640
# of Students in 2003-2004	844	42,594	15,819	19,847
<i>Ratio of Parent Respondents to Students, 2003-04</i>	22.7%	37.7 %	17.2 %	8.3 %
# of Parents Responding in 2004-2005	112	12,137	2,007	2,700
# of Students in 2004-2005	900	43,566	15,705	19,976
<i>Ratio of Parent Respondents to Students in 2004-05</i>	12.4%	27.9 %	12.8 %	13.5 %

Note: The ratio of parent respondents to students is listed above as a percentage for ease of interpretation; however, it is the number of parents who responded per 100 students enrolled.

What did parents report as their child's ethnicity, and how does this compare to the ethnic distribution of the student population?

Ethnicity	% of Students, as Reported by Parent Respondents	% of Students in Campus Population
African American	7.4%	10.6%
Asian	0.0%	0.9%
Hispanic	84.0%	81.7%
Native American	2.1%	0.1%
White	6.4%	6.8%

What did parents report as their child's grade, and how does this compare to the grade level distribution of the student population?

Grade	% of Students, as Reported by Parent Respondents	% of Students in Campus Population
EC	0%	1.3%
PK	1.9%	9.2%
K	9.5%	16.3%
1st	23.8%	17.0%
2nd	12.4%	15.4%
3rd	20.0%	15.2%
4th	13.3%	11.7%
5th	18.1%	13.8%
6th	1%	N/A

Note: Student population data are based on Fall 2003 and Fall 2004 PEIMS data submitted by the district to TEA, and may differ from the official AEIS report.

2004-2005 AISD Parent Survey Item Responses

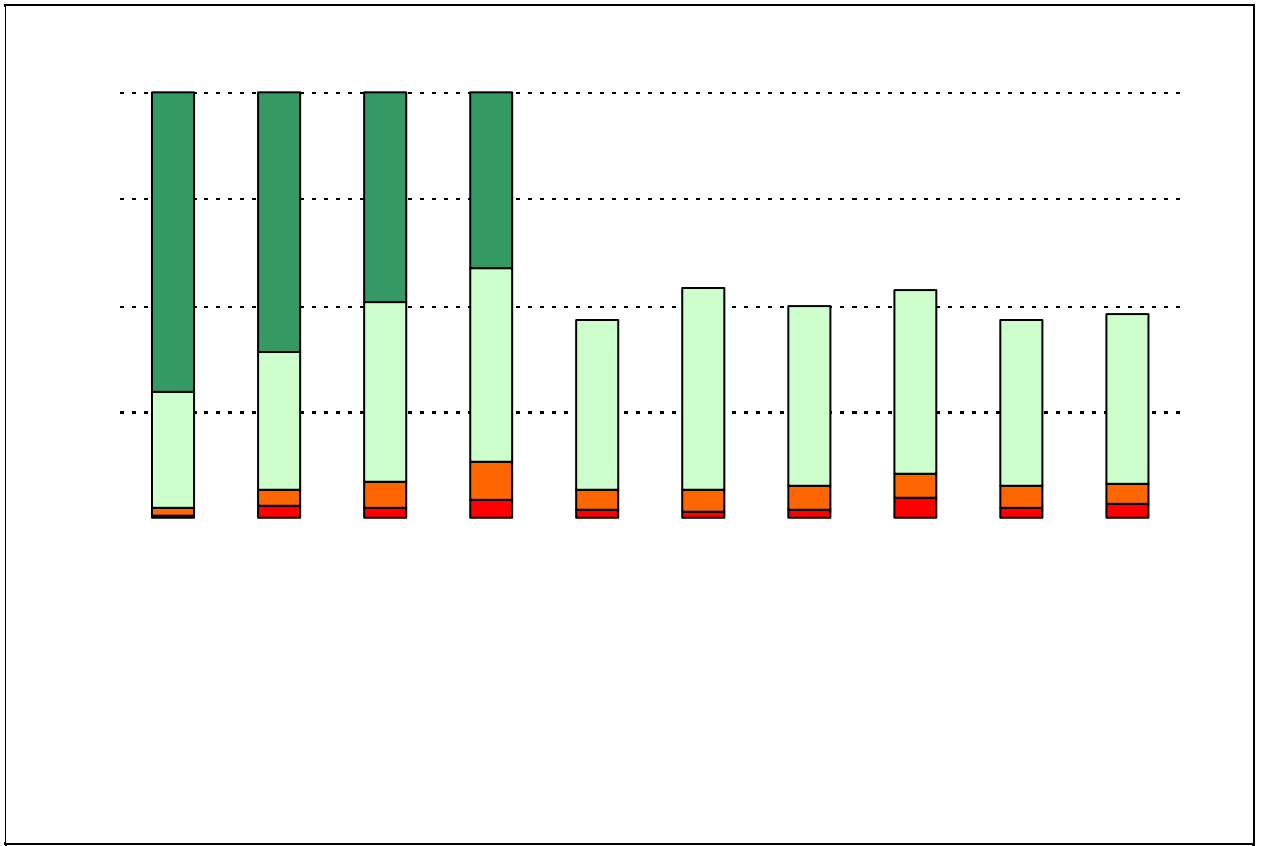
Each survey item is presented below, followed by a bar graph containing results for your campus and for all campuses at your level.

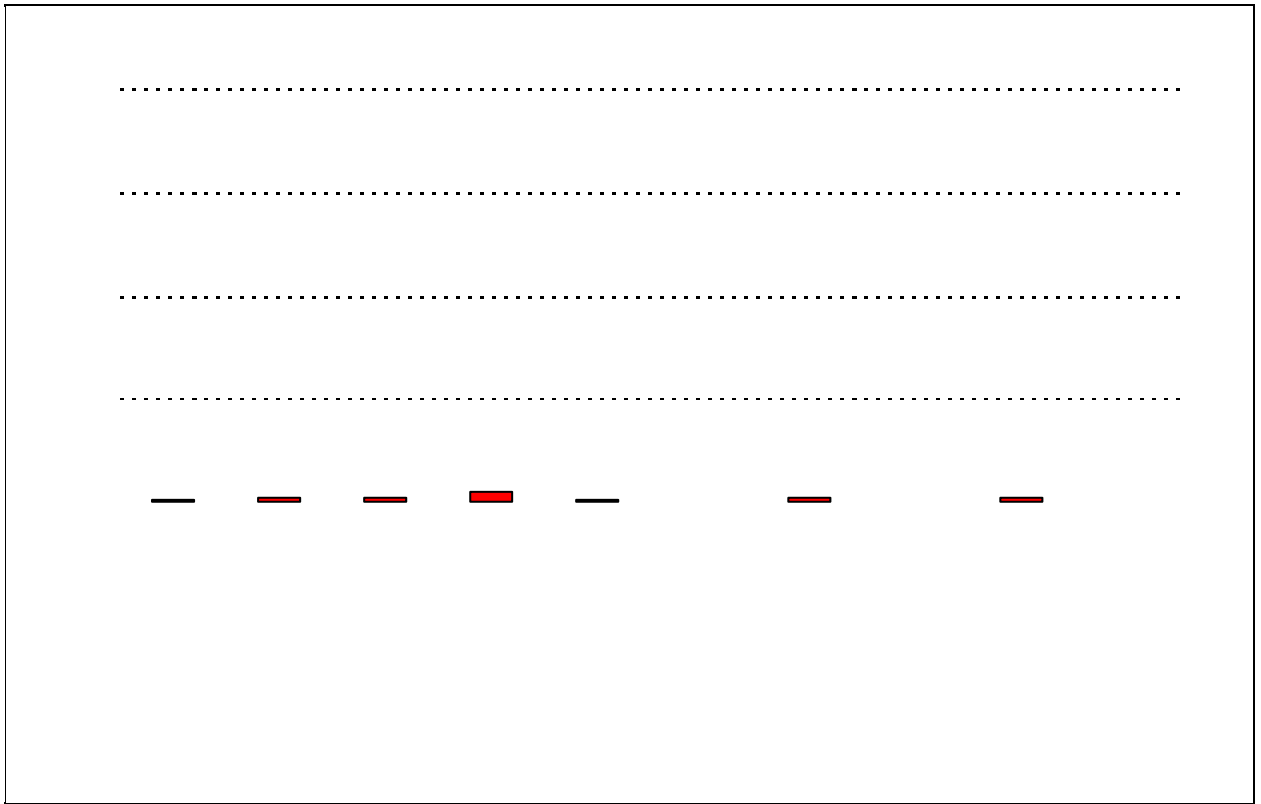
Please examine the results below to determine areas of strength and opportunities for improvement. Large percentages of "Strongly Agree" and "Agree" indicate areas in which your campus staff excel, and large percentages of "Disagree" and "Strongly Disagree" indicate areas for possible improvement.

In addition, please compare the percentage of parents from your campus selecting each response option with the percentage of all AISD parents selecting each response option. If your campus percentages are very different from the percentages reported districtwide, please consider potential reasons for discrepancies.

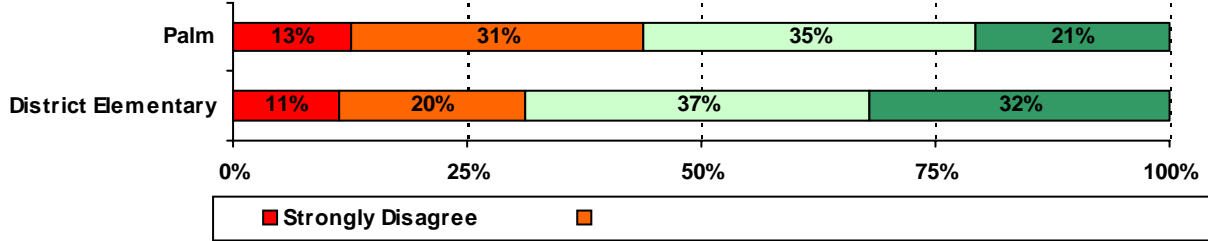
Please also review the results below for staff categories with consistently positive or negative responses. These responses may be used to identify opportunities for praise and areas for professional development.



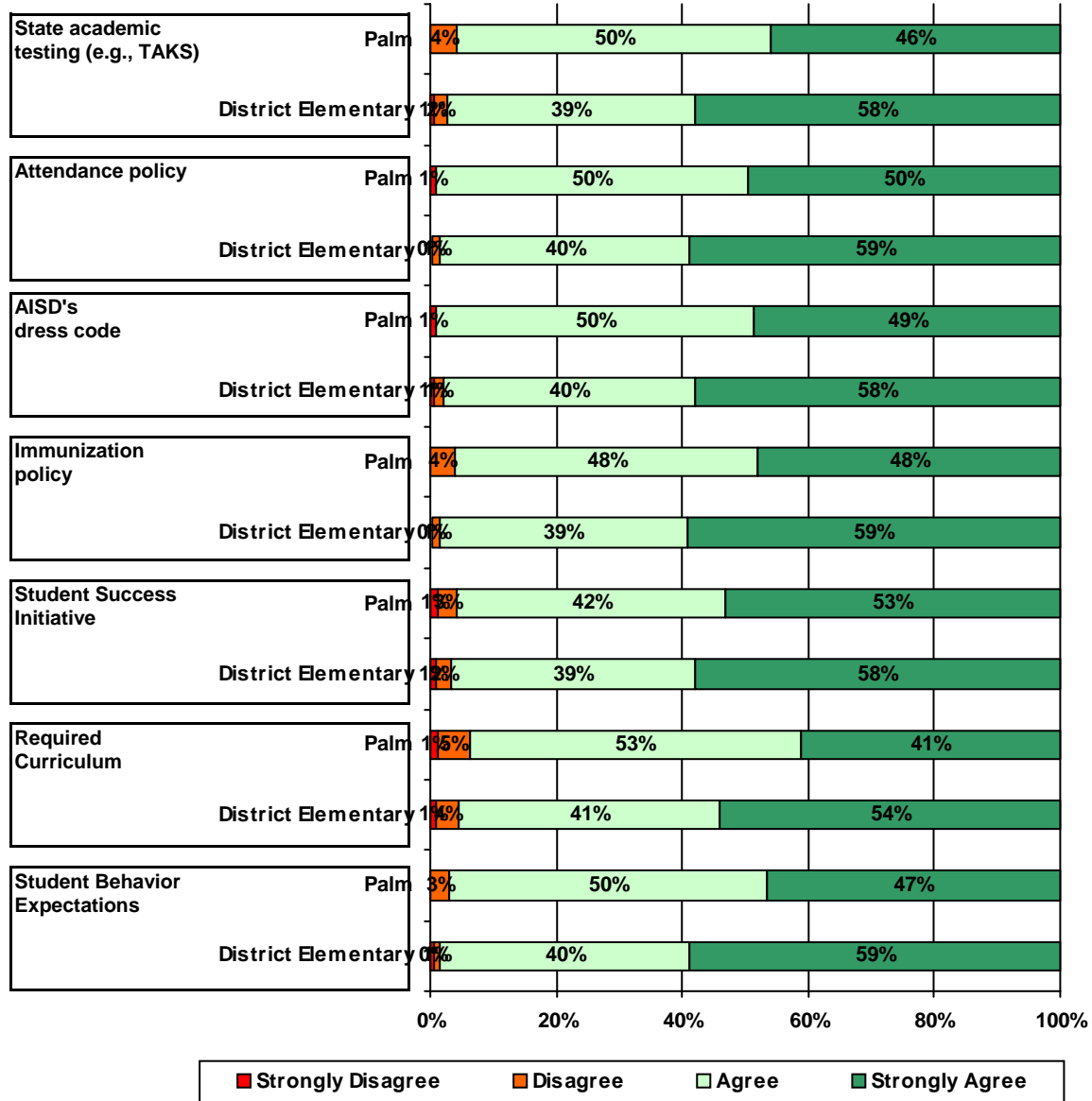




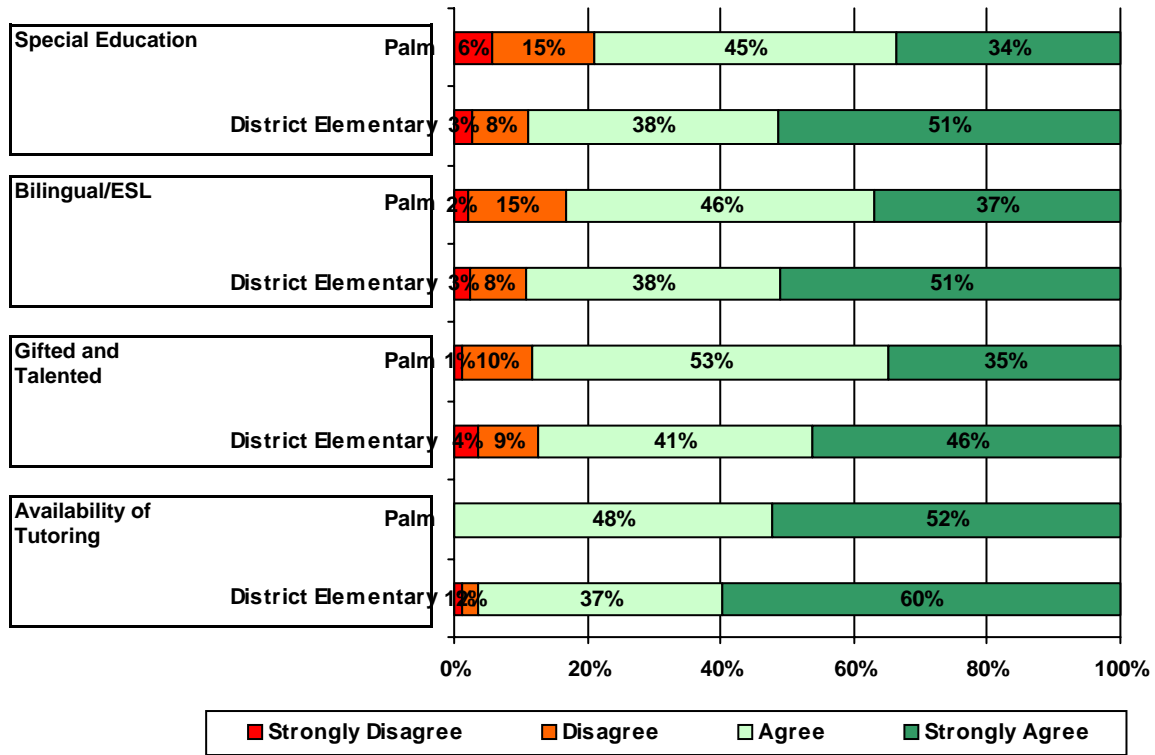
10. I am aware of the AISD Ombudsman.



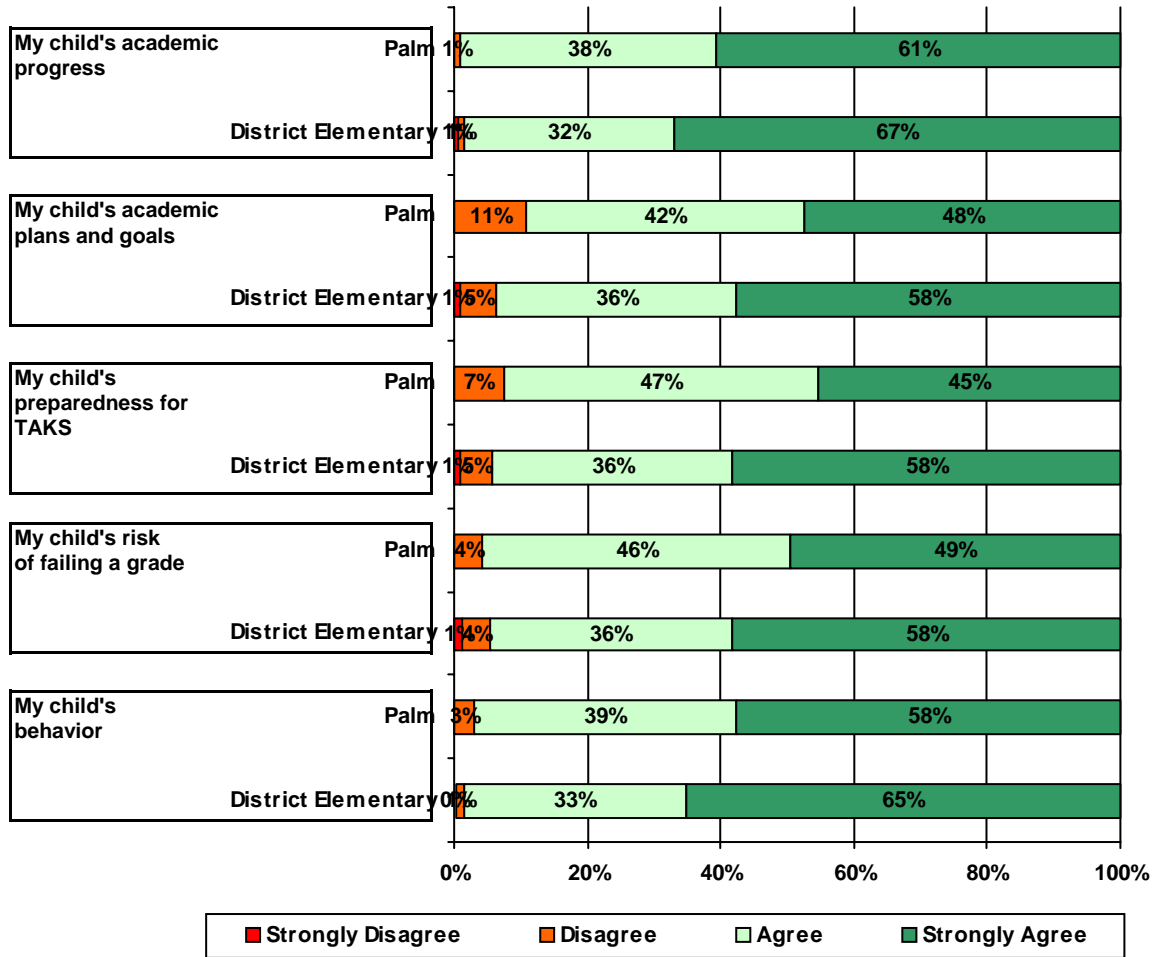
11. School staff provided me with information about the following school and district policies:



12. School staff provided me with information about the following programs:



13. School staff provided me with the following information about my child:



Item Response Details

Number of Palm Elementary School Parent Responses, by Response Option

		Strongly Agree	Agree	Disagree	Strongly Disagree	Does Not Apply	Don't Know
3a.	n = 108	62	36	0	0	3	7
3b.	n = 107	56	36	1	0	3	11
3c.	n = 109	50	35	0	0	7	17
3d.	n = 109	52	43	4	3	2	5
3e.	n = 109	65	36	4	2	2	0
4a.	n = 104	49	37	2	0	8	8
4b.	n = 104	49	35	2	0	8	10
4c.	n = 102	39	35	1	0	15	12
4d.	n = 103	41	37	2	2	9	12
4e.	n = 108	76	26	2	0	3	1
5a.	n = 102	46	35	4	3	8	6
5b.	n = 103	41	38	5	4	9	6
5c.	n = 101	34	35	4	1	14	13
5d.	n = 102	31	34	7	3	16	11
5e.	n = 107	63	33	4	3	3	1
6a.	n = 101	39	36	1	0	14	11
6b.	n = 102	41	34	2	0	14	11
6c.	n = 100	29	35	1	0	19	16
6d.	n = 101	30	28	3	1	23	16
6e.	n = 108	57	35	2	1	8	5
7a.	n = 104	56	36	1	0	4	7
7b.	n = 105	57	35	1	0	4	8
7c.	n = 106	47	35	1	0	8	15
7d.	n = 104	49	37	3	2	3	10
7e.	n = 105	62	33	2	1	2	5
*8.	n = 97	35	32	3	4	3	8
9.	n = 108	52	48	4	2	0	2
10.	n = 101	10	17	15	6	0	53

Number of Palm Elementary School Parent Responses, by Response Option (Continued)

		Strongly Agree	Agree	Disagree	Strongly Disagree	Does Not Apply	Don't Know
11a.	n = 107	45	49	4	0	5	4
11b.	n = 106	52	52	0	1	0	1
11c.	n = 105	49	51	0	1	2	2
11d.	n = 105	50	50	4	0	1	0
11e.	n = 104	49	39	3	1	7	5
11f.	n = 101	39	50	5	1	3	3
11g.	n = 104	48	52	3	0	0	1
12a.	n = 106	29	39	13	5	13	7
12b.	n = 107	33	41	13	2	15	3
12c.	n = 103	30	46	9	1	10	7
12d.	n = 106	12	11	0	0	1	0
13a.	n = 107	63	40	1	0	1	2
13b.	n = 108	49	43	11	0	3	2
13c.	n = 105	43	45	7	0	8	2
13d.	n = 105	47	44	4	0	7	3
13e.	n = 104	60	41	3	0	0	0

*This item included an additional response option, 'I am not aware of AISD's academic benchmark testing.' An additional 12 parents selected this option.