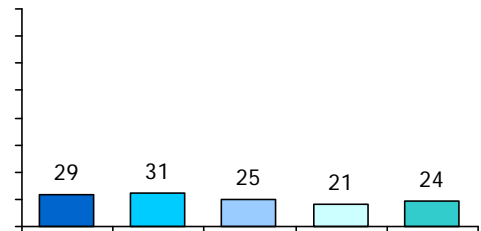


TELL AISD Teaching and Learning Conditions Survey: Results for 2011 through 2015 **Pease Elementary School**

To do their jobs well, educators need supportive school environments where they are valued, are trusted, and can collaborate to improve instruction. The Teaching, Empowering, Leading and Learning (TELL) AISD Survey is a unique opportunity to gather information about school conditions from those whose views matter most—practicing educators. Respondents are asked for their perceptions on a variety of issues related to student achievement and staff retention, including General Climate, Leadership, Managing Student Conduct, Achievement Press, Instructional Practice and Support, Community Support and Engagement, Professional Development, and Facilities and Resources. In 2015, 8,760 AISD campus employees completed the survey.



School Leadership

	Pease				ALL EL
	2011	2012	2013	2014	2015
The faculty and leadership have a shared vision.	86%	61%	100%	82%	
Teachers feel comfortable raising issues and concerns that are important to them.	86%	42%	94%	71%	
The school leadership consistently supports teachers.	90%	68%	100%	83%	
Teachers are held to high professional standards for delivering instruction.	90%	63%	89%	71%	
The school leadership facilitates using data to improve student learning.	95%	100%	100%	100%	
Teacher performance is assessed objectively.	86%	79%	100%	69%	
Teachers receive feedback that can help them improve teaching.	90%	84%	94%	94%	
The procedures for teacher evaluation are consistent.	95%	65%	94%	75%	
The faculty are recognized for accomplishments.	90%	63%	94%	89%	
There is an atmosphere of trust and mutual respect. +	90%	57%	100%	73%	
School leadership effectively communicates policy. +	96%	86%	95%	77%	
My principal involves faculty in decisions that directly impact the operations of my school.	*	*	100%	76%	
My principal clearly defines expectations for our school.	*	*	100%	82%	
My principal provides constructive feedback to teachers toward improving their	*	*	94%	100%	
My principal has a clearly defined mission and vision for my school.	*	*	100%	93%	
My principal encourages cooperation among faculty and staff toward improving student performance.	*	*	100%	88%	
Teachers at this school trust the principal to make sound professional decisions about instruction.	*	*	100%	81%	

+ Includes responses from teaching and nonteaching staff.

The school leadership makes a sustained effort to address teacher concerns about:

	Pease					ALL EL
	2011	2012	2013	2014	2015	2015
The use of time in my school	100%	94%	100%	83%	83%	86%
Facilities and resources	100%	89%	100%	94%	79%	92%
Community support and involvement	100%	100%	100%	94%	95%	93%
Managing student conduct	95%	89%	100%	89%	81%	87%
Teacher leadership	95%	56%	100%	82%	82%	93%
School leadership	100%	71%	100%	82%	79%	92%
Professional development	100%	95%	100%	94%	88%	93%
Instructional practices and support	95%	94%	100%	94%	88%	93%
New teacher support	95%	86%	100%	100%	64%	89%
Achievement press	*	92%	93%	100%	73%	94%
General school climate	*	58%	94%	78%	80%	90%

Note. *New to the survey in Spring 2012.

Teacher Leadership

	Pease					ALL EL
	2011	2012	2013	2014	2015	2015
Teachers are recognized as educational experts.	90%	74%	100%	94%	95%	90%
Teachers are trusted to make sound professional decisions about instruction.	95%	100%	100%	100%	95%	90%
Teachers are relied upon to make decisions about educational issues.	100%	94%	100%	94%	95%	91%
Teachers are encouraged to participate in school leadership roles.	100%	84%	100%	94%	89%	93%
The faculty has an effective process for making group decisions to solve problems.	86%	50%	94%	78%	59%	83%
In this school we take steps to solve problems.	95%	58%	100%	78%	68%	90%
Teachers are effective leaders in this school.	95%	61%	94%	89%	79%	92%
Teachers have an appropriate level of influence on decision making in this school.	*	76%	94%	83%	67%	83%

Note. *New to the survey in Spring 2012.

Managing Student Conduct

	Pease					ALL EL
	2011	2012	2013	2014	2015	2015
Students at this school understand expectations for their conduct.	97%	93%	100%	100%	92%	93%
Students at this school follow rules of conduct.	100%	83%	95%	97%	96%	85%
Policies and procedures about student conduct are clearly understood by the faculty.	100%	86%	100%	95%	85%	91%
Administrators consistently enforce rules for student conduct.	93%	75%	100%	93%	87%	86%
Administrators support teachers' efforts to maintain discipline in the classroom.	96%	82%	100%	93%	96%	90%
Teachers consistently enforce rules for student conduct.	100%	75%	95%	90%	96%	93%
The faculty work in a school environment that is safe.	97%	89%	95%	93%	95%	96%
Non-teaching staff consistently enforce rules for student conduct.	100%	81%	100%	89%	84%	93%

Note: All items in this table include responses from teaching and non-teaching staff.

Achievement Press

	Pease					ALL EL
	2011	2012	2013	2014	2015	2015
The school sets high standards for academic performance.	100%	89%	100%	95%		96%
Teachers in this school believe that their students have the ability to achieve academically.	97%	93%	95%	90%		96%
Parents exert pressure to maintain high standards.	100%	75%	100%	89%		68%
Achievement is recognized and acknowledged by the school.	100%	90%	100%	100%		93%
Parents press for school improvement.	89%	82%	100%	100%		70%
Students in this school can achieve the goals that have been set for them.	100%	100%	100%	100%		95%
Students respect others who get good grades.	100%	100%	100%	94%		
Students seek extra work so they can get good grades.	96%	77%	94%	71%		
Students try hard to improve on previous work.	96%	80%	95%	85%		
The learning environment is orderly and serious. +	97%	86%	100%	97%		

Note. + Item includes responses from teaching and non-teaching staff.

Pease

2014

Teachers in this school use assessment data to inform their instruction.

100%

Teachers work in professional learning communities to develop and align instructional practices.

94%

Provided supports (i.e., instructional coaching, professional learning communities, etc.) translate to improvements in instructional practices by teachers.

93%

Teachers are encouraged to try new things to improve instruction.

94%

Teachers at my school are assigned classes that maximize their likelihood of success with students.

81%

Teachers have autonomy to make decisions about instructional delivery (i.e., pacing, materials and pedagogy).

100%

82%

94%

