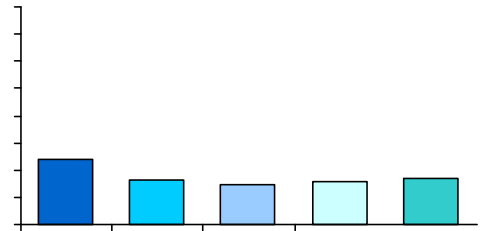


TELL AISD Teaching and Learning Conditions Survey: Results for 2011 through 2015 **Pecan Springs Elementary School**

To do their jobs well, educators need supportive school environments where they are valued, are trusted, and can collaborate to improve instruction. The Teaching, Empowering, Leading and Learning (TELL) AISD Survey is a unique opportunity to gather information about school conditions from those whose views matter most—practicing educators. Respondents are asked for their perceptions on a variety of issues related to student achievement and staff retention, including General Climate, Leadership, Managing Student Conduct, Achievement Press, Instructional Practice and Support, Community Support and Engagement, Professional Development, and Facilities and Resources. In 2015, 8,760 AISD campus employees completed the survey.



ALL
EL
2015

	<u>2011</u>	<u>2012</u>	<u>2013</u>
The faculty and leadership have a shared vision.	82%	79%	76%
Teachers feel comfortable raising issues and concerns that are important to them.	67%	57%	69%
The school leadership consistently supports teachers.	61%	62%	69%
Teachers are held to high professional standards for delivering instruction.	87%	97%	100%
	93%	94%	89%
	83%	82%	90%
	79%	74%	91%
	83%	79%	90%
	68%	68%	89%
There is an atmosphere of respect and trust among all staff members.	78%	76%	86%
Teachers are held to high professional standards for delivering instruction.	*	*	73%
	*	*	79%
	*	*	79%
	*	*	88%
	*	*	82%
	*	*	69%

The school leadership makes a sustained effort to address teacher concerns about:

ALL
EL

		Pecan Springs	
		2012	2013
The use of time in my school	62%	59%	64%
Facilities and resources	80%	72%	64%
Community support and involvement	67%	74%	85%
Managing student conduct	77%	77%	83%
Teacher leadership	84%	76%	88%
School leadership	70%	85%	85%
Professional development	89%	94%	88%
Instructional practices and support	82%	77%	82%
New teacher support	68%	79%	84%
Achievement press	*	88%	87%

—

2011 2012

Achievement Press

	Pecan Springs			ALL EL
	2011	2012	2013	2015
The school sets high standards for academic performance.	97%	93%		
Teachers in this school believe that their students have the ability to achieve academically.	95%	85%		
Parents exert pressure to maintain high standards.	31%	26%		
Achievement is recognized and acknowledged by the school.	88%	90%		
Parents press for school improvement.	35%	31%		
Students in this school can achieve the goals that have been set for them.	85%			
Students respect others who get good grades.	67%			
Students seek extra work so they can get good grades.	38%			
Students try hard to improve on previous work.	59%			
The learning environment is orderly and serious. +	75%			

Instructional Practice and Support

	Pecan Springs				ALL EL
	2011	2012	2013	2014	2015
Teachers in this school use assessment data to inform their instruction.	98%	97%	100%	94%	
Teachers work in professional learning communities to develop and align instructional practices.	91%	91%	97%	92%	
Provided supports (i.e., instructional coaching, professional learning communities, etc.) translate to improvements in instructional practices by teachers.	84%	79%	94%	86%	
Teachers are encouraged to try new things to improve instruction.	80%	78%	85%	66%	
Teachers at my school are assigned classes that maximize their likelihood of success with students.	76%	35%	78%	78%	
Teachers have autonomy to make decisions about instructional delivery (i.e., pacing, materials and pedagogy).	59%	53%	53%	57%	

Community Support and Engagement

	Pecan Springs			ALL EL
	2011	2012	2013	2015
			31%	
			68%	
5			81%	
This school does a good job of encouraging parent/guardian involvement.	73%		74%	
Teachers provide parents/guardians with useful information about student learning.	93%		94%	
			71%	
Parents/guardians support teachers, contributing to their success with students.	51%		54%	
Community members support teachers, contributing to their success with students.	64%		80%	
The community we serve is supportive of this school.	48%		63%	

Professional Development

	Pecan Springs					ALL EL
	2011	2012	2013	2014	2015	2015
Sufficient resources are available for professional development.	73%	55%	76%	83%	83%	88%
An appropriate amount of time is provided for professional development.	80%	67%	67%	81%	80%	85%
Professional development offerings are data driven.	87%	82%	82%	82%	77%	91%
Professional learning opportunities are aligned with the school's improvement plan.	90%	76%	82%	85%	90%	94%
Professional development is differentiated to meet the needs of individual teachers.	60%	63%	61%	64%	64%	79%
Professional development deepens teachers' content knowledge.	93%	83%	85%	81%	86%	88%
Teachers are encouraged to reflect on their own practice.	81%	76%	85%	86%	86%	94%
Follow up is provided from professional development in this school.	55%	65%	63%	71%	56%	82%
Professional development provides ongoing opportunities for teachers to work with colleagues to refine teaching practices.	76%	58%	62%	77%	71%	87%
Professional development is evaluated and results are communicated to teachers.	47%	48%	59%	64%	61%	76%
Professional development enhances teachers' abilities to implement instructional strategies that meet diverse student learning needs.	77%	81%	91%	81%	92%	91%
Professional development enhances teachers' abilities to improve student learning.	82%	85%	91%	86%	91%	93%

