



2006-2007 AISD Parent Survey Results

Perez

The following report contains the results of the 2006-2007 AISD Parent Survey for your campus and all AISD schools at your level. The first section of this report provides a comparison of the campus demographics and the demographics reported by parents who responded to the survey from your campus. The next section describes the percentages of parents selecting specific responses for each survey item, and the final section indicates the actual number of parents who selected each response option. Campus survey results should be examined for areas of strength and opportunities for improvement. Results for all AISD schools at your level and results for your campus from 2005-2006 are presented to provide references for comparison.

How many parents responded to the survey in 2005-2006 and 2006-2007, and how does this compare to the number of students in the population each year?

	Campus	District EL	District MS	District HS
# of Parents Responding in 2005-2006		12,137	2,007	2,700
# of Students in 2005-2006	0	44,827	15,624	20,081
<i>Ratio of Parent Respondents to Students, 2005-2006</i>	%	24.3%	11.5%	10.4%
# of Parents Responding in 2006-2007	198	11,812	1,354	1,426
# of Students in 2006-2007	648	45,431	15,790	20,279
<i>Ratio of Parent Respondents to Students, 2006-2007</i>	30.6%	26%	8.6%	7%

What did parents report as their child's ethnicity, and how does this compare to the ethnic distribution of the student population?

Ethnicity	% of Students, as Reported by Campus Parent Respondents	% of Students in Campus Population
African American	11.0%	10.8%
Asian	0.6%	0.9%
Hispanic	82.8%	81.6%
Native American	0.6%	0.0%
White	4.9%	6.6%

What did parents report as their child's grade, and how does this compare to the grade level distribution of the student population?

Grade	% of Students, as Reported by Campus Parent Respondents	% of Students in Campus Population
EC	0.0%	1.1%
PK	11.0%	12.2%
K	26.9%	17.4%
1st	23.1%	15.1%
2nd	11.5%	15.4%
3rd	17.6%	12.3%
4th	4.4%	13.9%
5th	5.5%	12.5%
6th	N/A	N/A

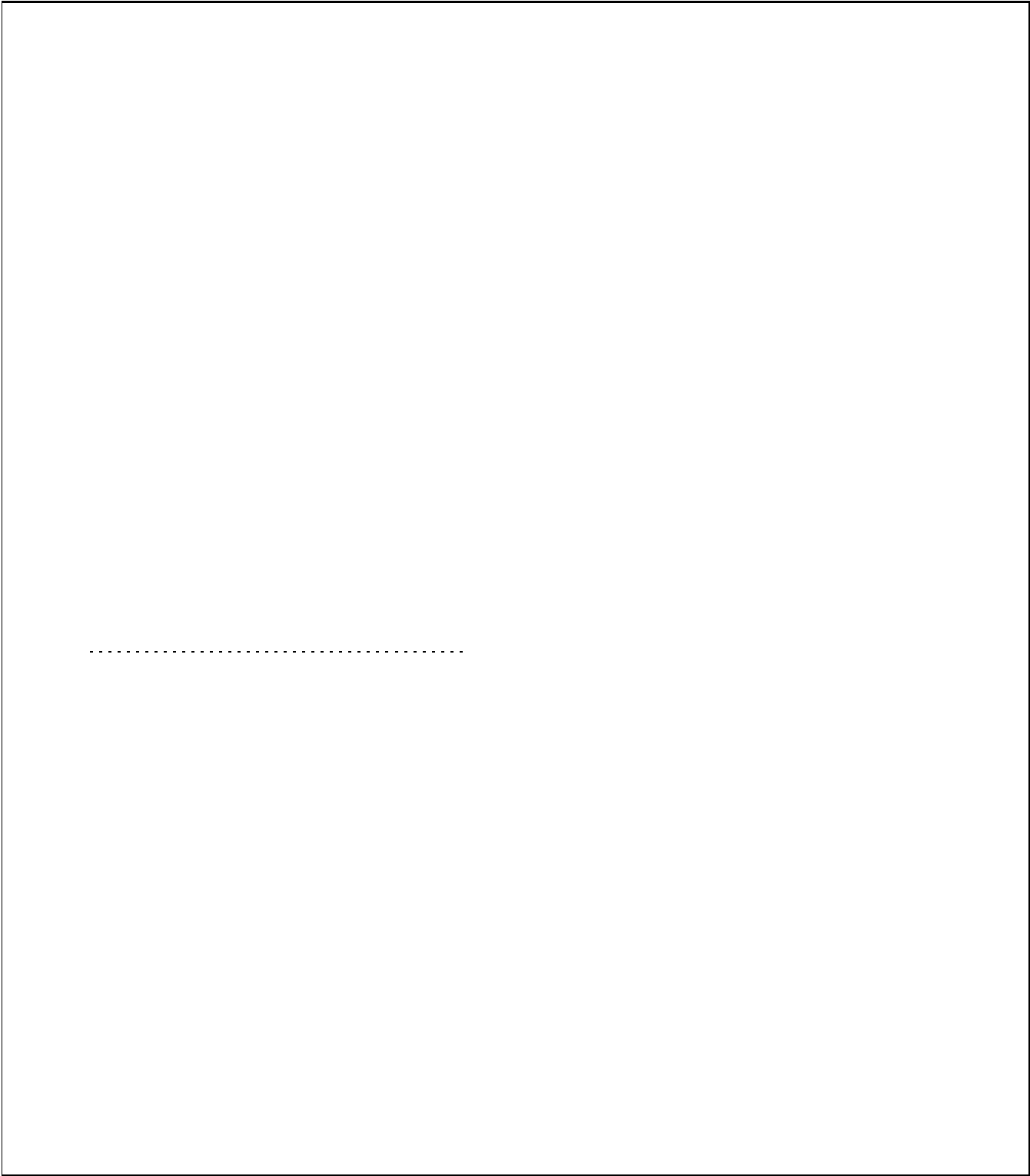
Note: Student population data are based on Fall PEIMS data submitted by the district to TEA, and may differ from the official AEIS report.

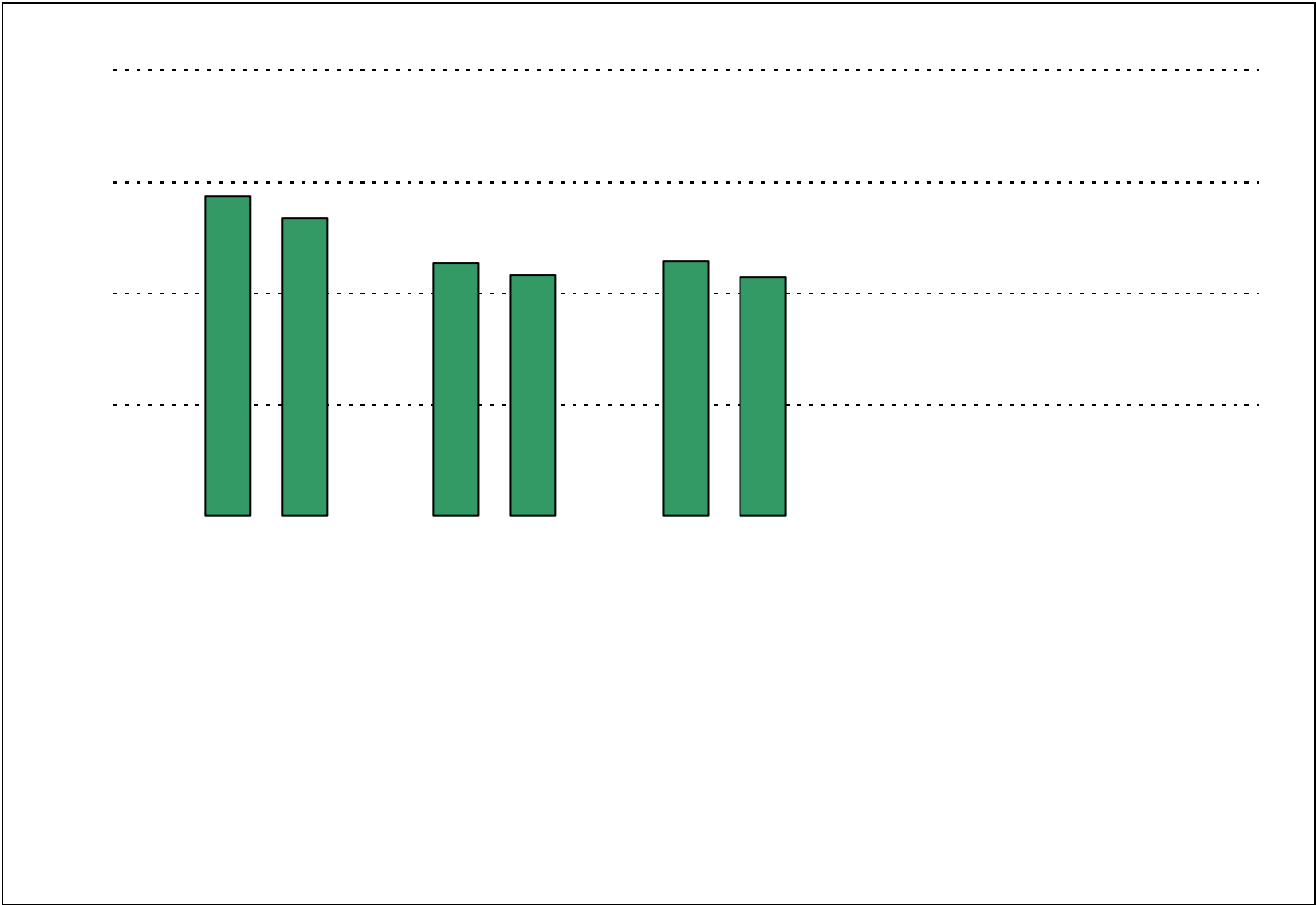
USING THE RESULTS OF THE AISD PARENT SURVEY

Each survey item is presented below, followed by a bar graph containing your school's results for two years and this year's results for all campuses at your level. You will be able to identify areas in which your school's results have changed over time, and you will be able to compare the responses of your school's parents to those of parents at your level district-wide.

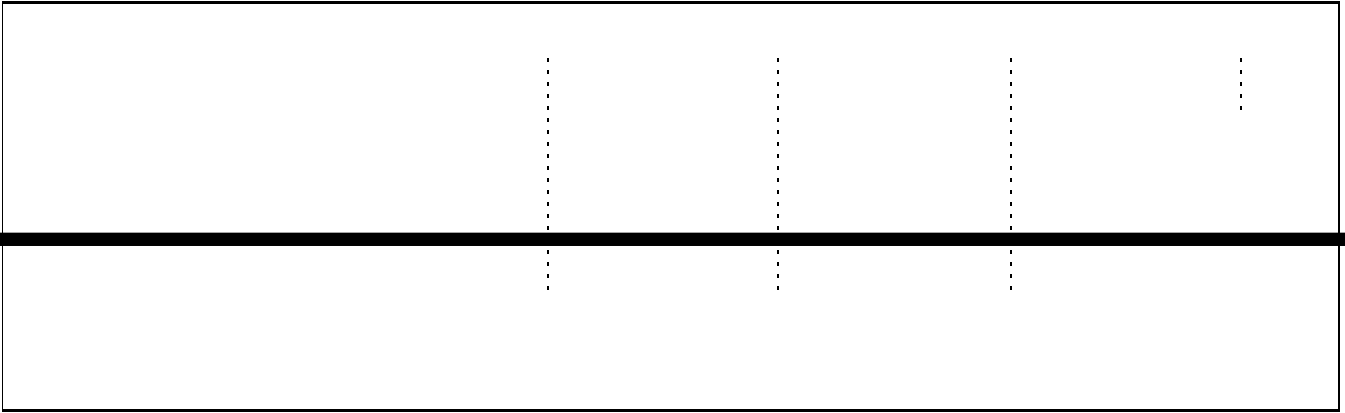
Please examine your results to determine areas of strength and opportunities for improvement. Areas of strength can be identified by large percentages of parents who "Strongly Agree" or "Agree" with a statement. Opportunities for improvement can be identified by large percentages of parents who "Disagree" or "Strongly Disagree" with a statement. In addition, please look for patterns in which one staff category consistently receives more positive or negative responses than other staff categories. This will help you to identify opportunities for praise and areas in which training may be necessary. District responses for all schools at your level are also provided for comparison with 2006-2007 responses from your school. If your campus percentages are very different from the percentages reported by parents district-wide, please consider potential reasons for discrepancies.

Longitudinal data are provided, when available. It is important to look at the responses from year to year to determine whether there are any areas in which percentages have changed by more than a few points. Keep in mind that when response rates are low, the percentages may appear to fluctuate more without necessarily signaling a serious shift in perception. Also, think about any changes in campus policies and practices that may have resulted in positive or negative changes. How can campus staff continue to support the positive changes? How might your staff address any undesirable changes that may have occurred? Because parental perceptions of treatment by school personnel are based on interactions with a variety of school staff, representatives from all areas should be included in discussions regarding school planning and improvement processes.

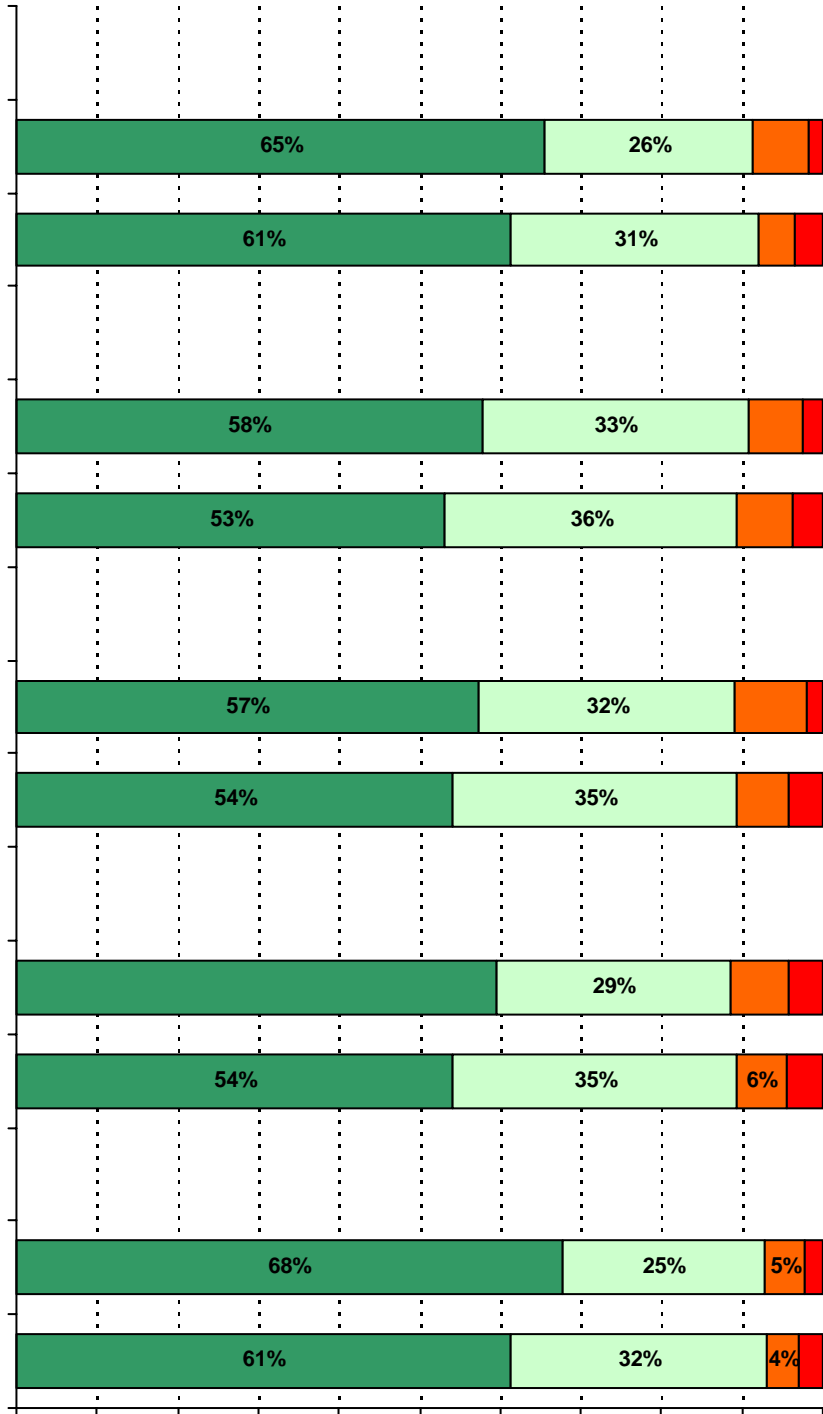




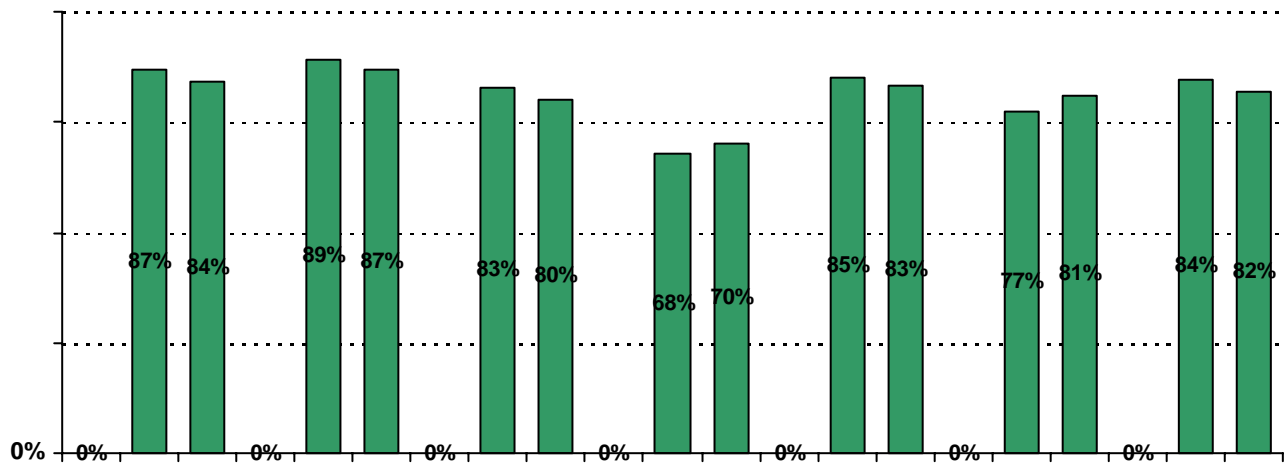
A rectangular box containing four horizontal dashed lines, serving as a template for handwriting practice. The lines are evenly spaced and extend across the width of the box.



15. School staff provide me with enough of the following information about my child:

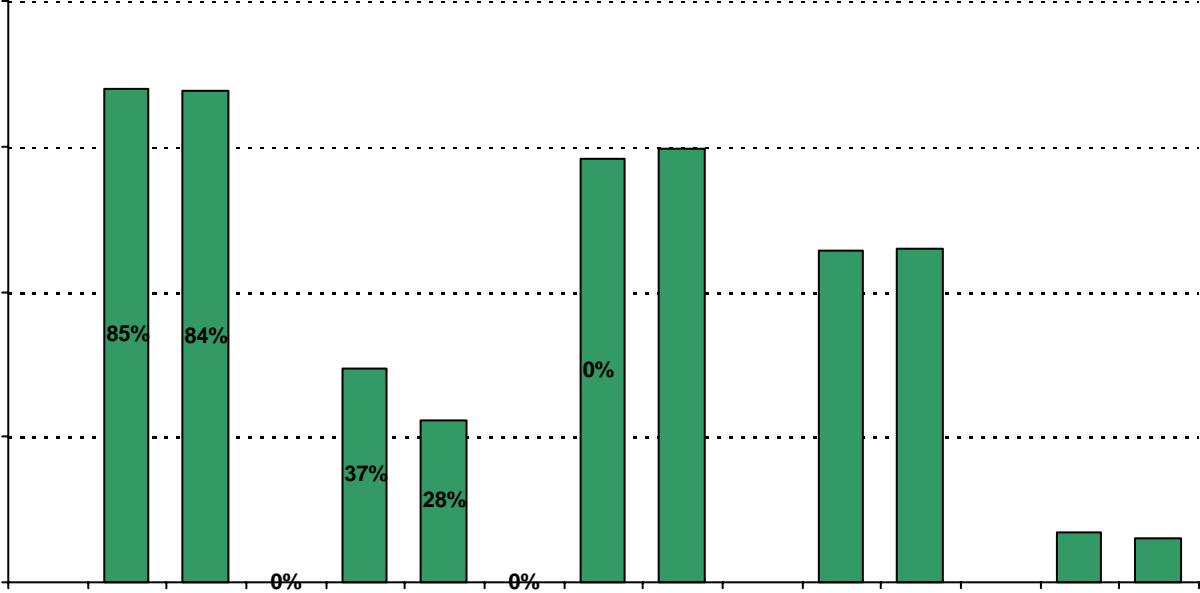


19. Which of the following activities do you participate in at your child's school:*



* Item(s) #17, #18, #19 added to the survey in 2006

20. My goals for my child include the following plans:



Item Response Details

Number of Perez Parent Responses, by Response Option

		Strongly Agree	Agree	Disagree	Strongly Disagree	Don't Know/NA
4.	n = 157		3	154		
5a.	n = 187	128	36	8	7	8
5b.	n = 183	104	46	10	5	18
5c.	n = 174	88	37	8	5	36
5d.	n = 186	94	55	16	11	10
5e.	n = 185	121	47	8	6	3
6a.	n = 180	102	44	10	5	19
6b.	n = 175	86	39	12	8	30
6c.	n = 169	74	38	13	5	39
6d.	n = 175	85	44	15	6	25
6e.	n = 187	128	40	6	5	8
7a.	n = 170	92	47	7	5	19
7b.	n = 163	69	53	10	6	25
7c.	n = 160	67	47	11	5	30
7d.	n = 163	62	46	18	5	32
7e.	n = 183	120	42	7	5	9
8a.	n = 171	82	47	10	4	28
8b.	n = 165	72	49	10	4	30
8c.	n = 157	61	46	6	4	40
8d.	n = 167	60	46	14	5	42
8e.	n = 184	108	47	9	5	15
9a.	n = 184	117	42	8	7	10
9b.	n = 180	109	43	8	6	14
9c.	n = 171	99	40	6	4	22
9d.	n = 175	94	47	10	5	19
9e.	n = 182	125	38	8	5	6
9f.	n = 179	102	38	12	3	24
10.	n = 185	69	43	12	16	45
11.	n = 184	118	47	8	5	6
12.	n = 184	114	53	7	3	7

13a.	n = 183	113	51	9	3	7
13b.	n = 182					
13c.	n = 172					
14a.	n = 186	72	57	21	10	26
14b.	n = 186					
14c.	n = 185					
15a.	n = 191	119	47	13	3	9
15b.	n = 185	95	54	11	4	21
		83	46	13	3	40