



## Pickle Elementary School

	Campus	District EL	District MS	District HS
<b># of Parents Responding in 2003-2004</b>		16,070	2,721	
<b># of Students in 2003-2004</b>		42,594	15,819	
<i>Ratio of Parent Respondents to Students, 2003-04</i>		<b>37.7 %</b>	<b>17.2 %</b>	
<b># of Parents Responding in 2004-2005</b>		12,137	2,007	
<b># of Students in 2004-2005</b>		43,566		
<i>Ratio of Parent Respondents to Students in 2004-05</i>		<b>27.9 %</b>		

0.0037 Tc(ed)-7( )6(above as a percent  
and opportunities for improvement. R  
provide a reference for comparison.

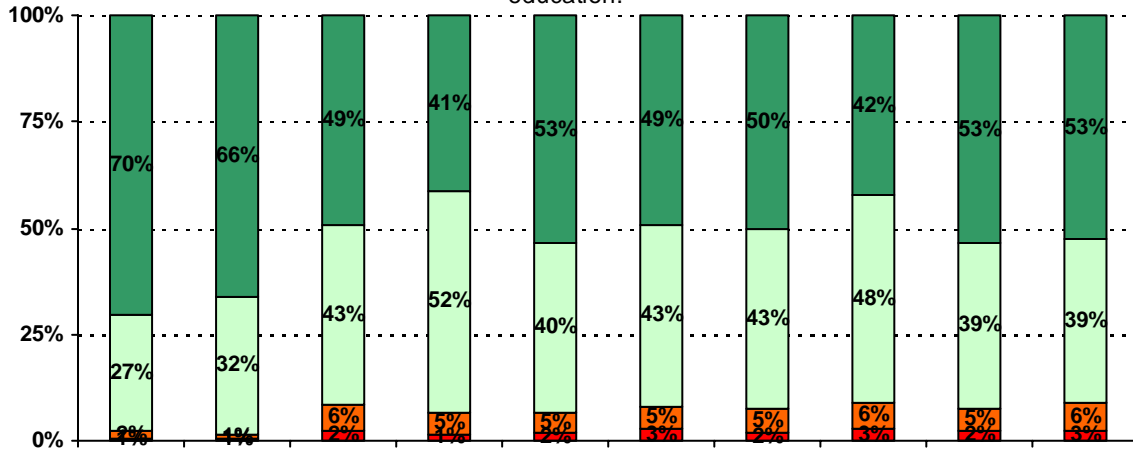
### What did parents report as their child's ethnicity, and how does this compare to the ethnic distribution of the student population?

Ethnicity	% of Students, as Reported by Parent Respondents	% of Students in Campus Population
<b>African American</b>	13.3%	15.4%
<b>Asian</b>	0.5%	0.2%
<b>Hispanic</b>	85.6%	83.4%
<b>Native American</b>	0.5%	0.0%
<b>White</b>	0.0%	1.0%



A rectangular box containing four horizontal dashed lines, serving as a template for writing.

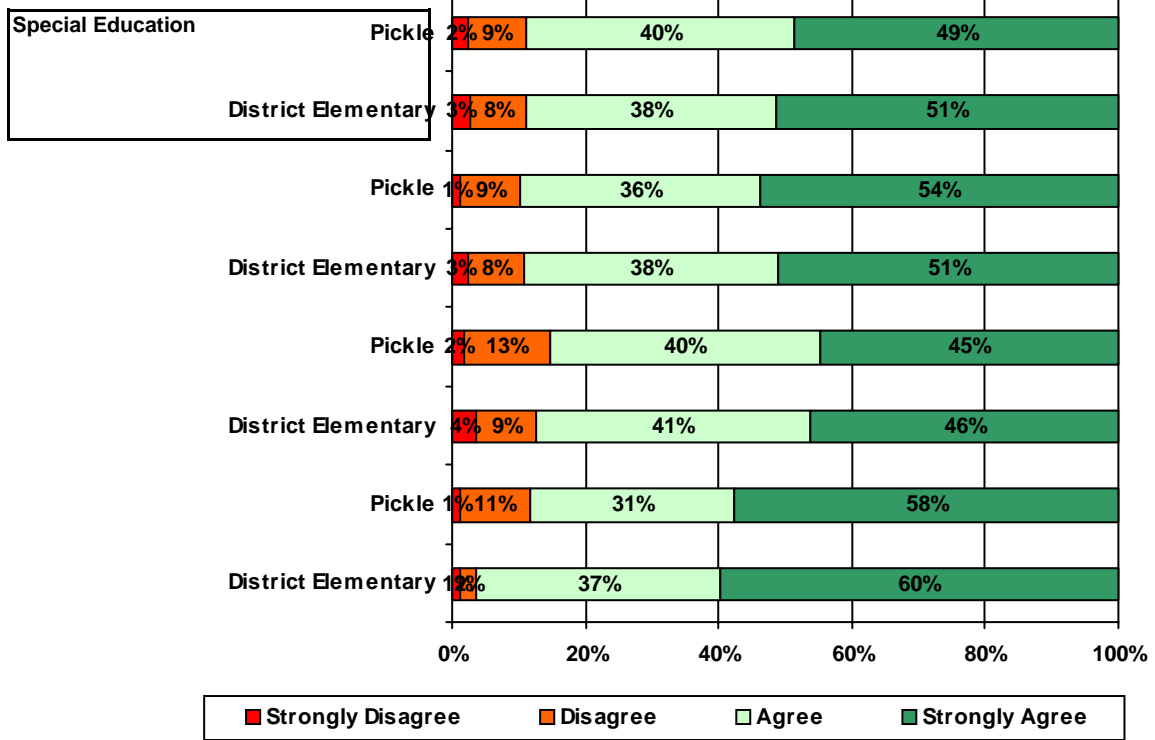
5. The following school staff have helped me to become more involved in my child's education.



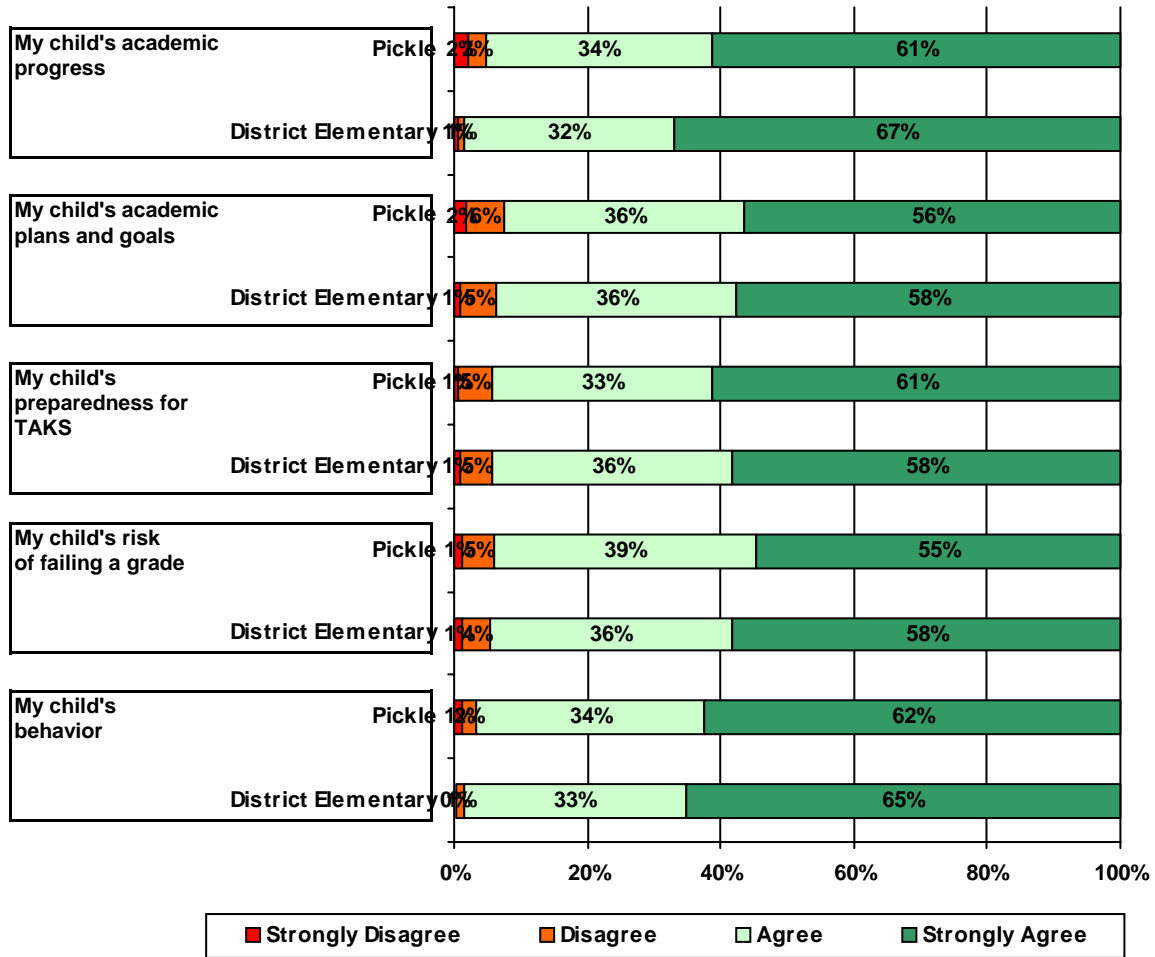


**Required  
curriculum**

12. School staff provided me with information about the following programs:



13. School staff provided me with the following information about my child:





		Strongly Agree	Agree	Disagree	Strongly Disagree	Does Not Apply	Don't Know
<b>3a.</b>	<b>n = 205</b>	102	77	5	2	5	14
			76	3	2	5	24

<b>11a.</b>	<b>n = 199</b>	100	77	3	1	9	9
<b>11b.</b>	<b>n = 184</b>	86	80	6	0	6	6
<b>11c.</b>	<b>n = 185</b>	83	79	5	1	7	10
<b>11d.</b>	<b>n = 181</b>	92	73	7	0	4	5
<b>11e.</b>	<b>n = 185</b>	89	60	4	1	14	17
<b>11f.</b>	<b>n = 174</b>	69	66	9	2	5	23
<b>11g.</b>	<b>n = 186</b>	93	73	5	2	5	8
<b>12a.</b>	<b>n = 196</b>	83	69	15	4	15	10
<b>12b.</b>	<b>n = 195</b>	94	63	16	2	15	5
		70	63	20	3	10	16

\*This item included an additional response option, 'I am not aware of AISD's academic benchmark testing.' An additional 30 parents selected this option.