

2004-2005 AISD Parent Survey Results

Pillow Elementary School

The following report contains the results of the 2004-2005 AISD Parent Survey for your campus and all AISD schools acampo5selected each response option. Campus survey results should be examined for areas and opportunities for improvement. Results for all AISD schools at your level are presented to provide a reference for comparison.

How many parents responded to the survey in 2003-2004 and 2004-2005, and how does this compare to the number of students in the population each year?

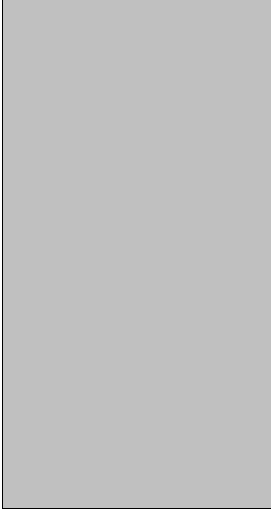
	Campus	District EL	District MS	District HS
# of Parents Responding in 2003-2004	150	16,070	2,721	1,640
# of Students in 2003-2004	463	42,594	15,819	19,847
<i>Ratio of Parent Respondents to Students, 2003-04</i>	32.4%	37.7 %	17.2 %	8.3 %
# of Parents Responding in 2004-2005	81	12,137	2,007	2,700
# of Students in 2004-2005	474	43,566	15,705	19,976
<i>Ratio of Parent Respondents to Students in 2004-05</i>	17.1%	27.9 %	12.8 %	13.5 %

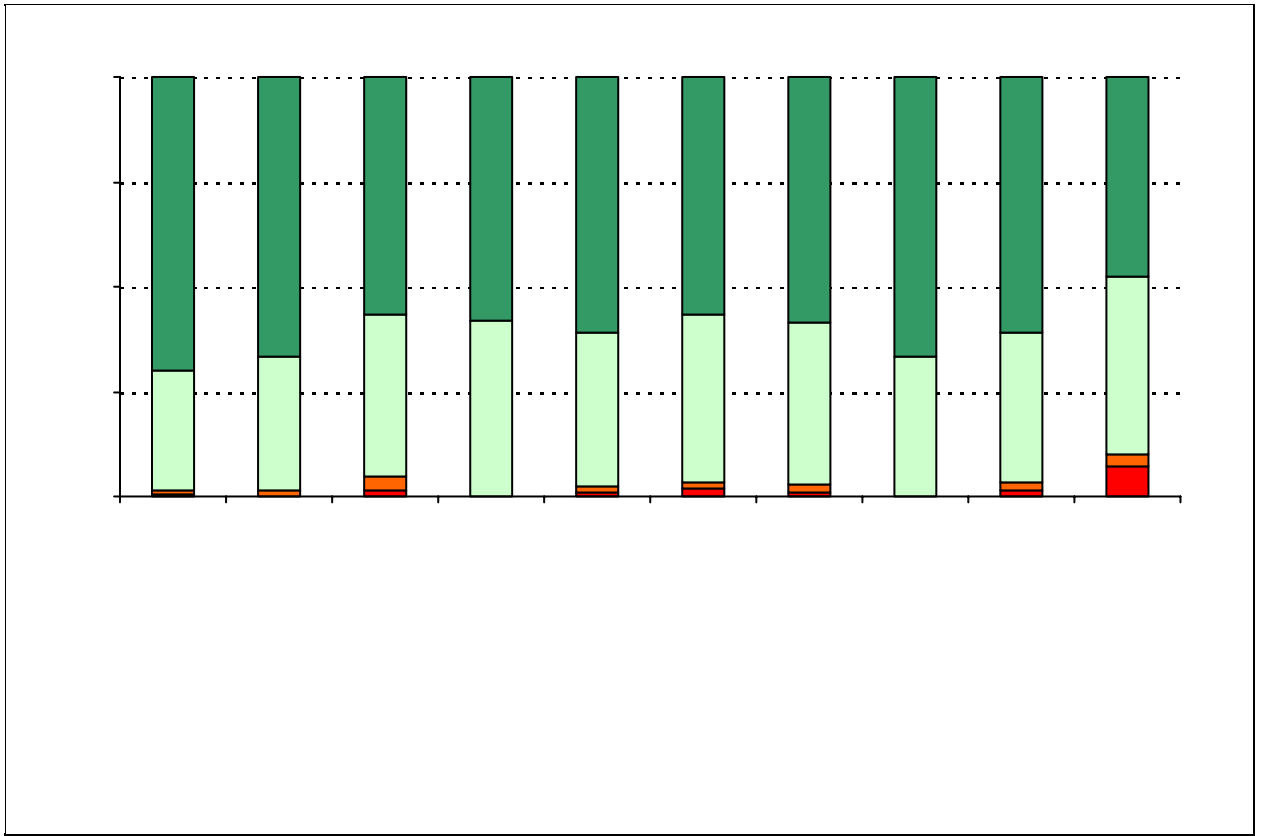
Note: The ratio of parent respondents to students is listed above as a percentage for ease of interpretation; however, it is the number of parents who responded per 100 students enrolled.

Ethnicity	% of Students, as Reported by Parent Respondents	% of Students in Campus Population
African American	27.5%	25.1%
Asian	15.9%	9.5%
Hispanic	30.4%	38.8%
Native American	0.0%	0.2%
White	26.1%	26.4%

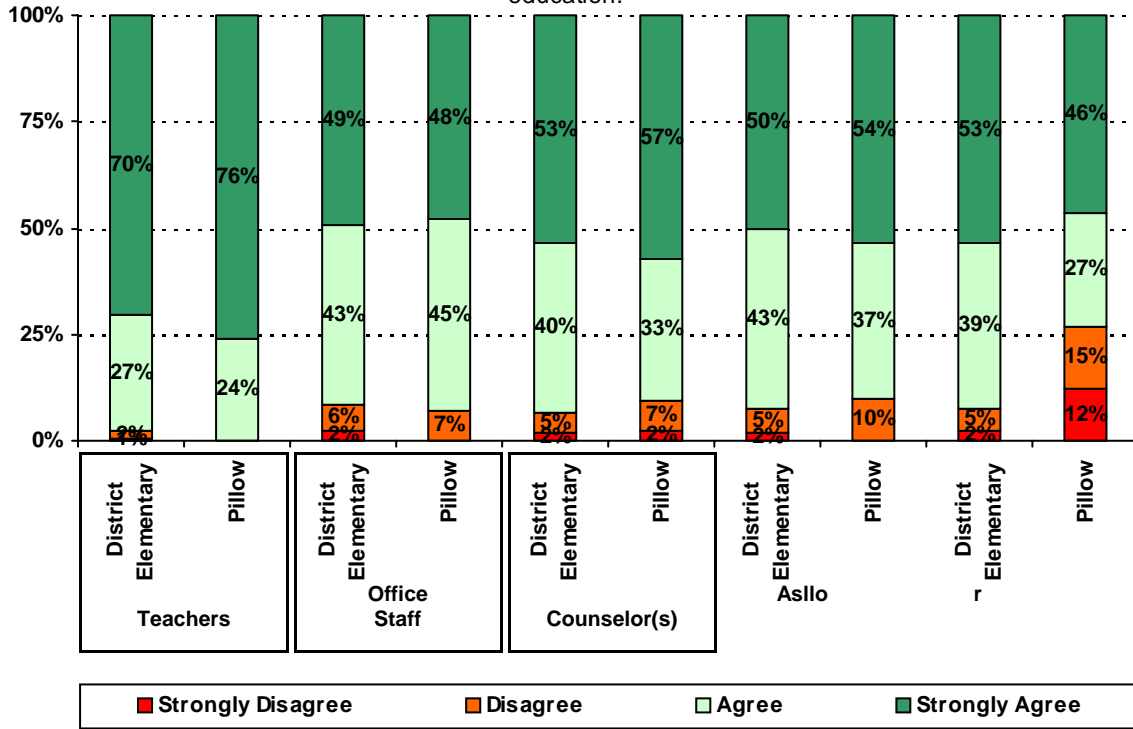
**% of Students, as
Reported by Parent
Respondents**

% of Students in

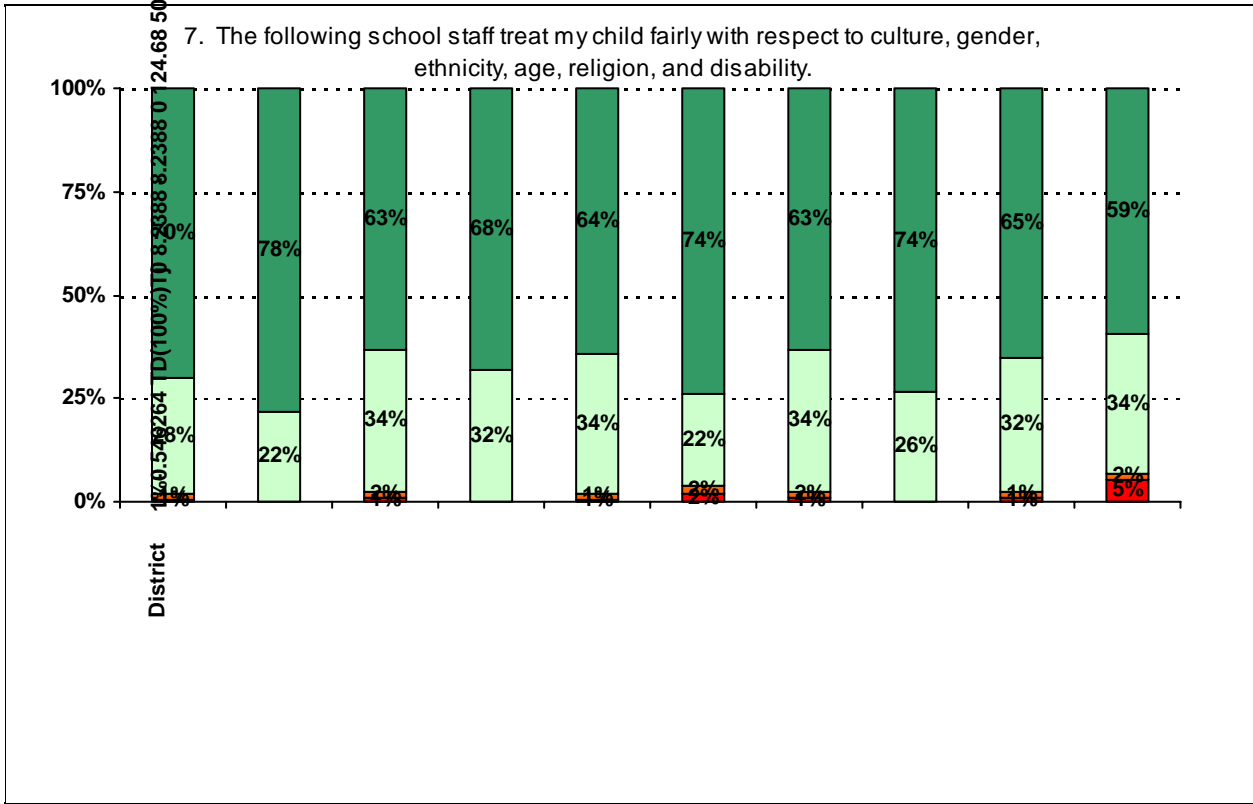


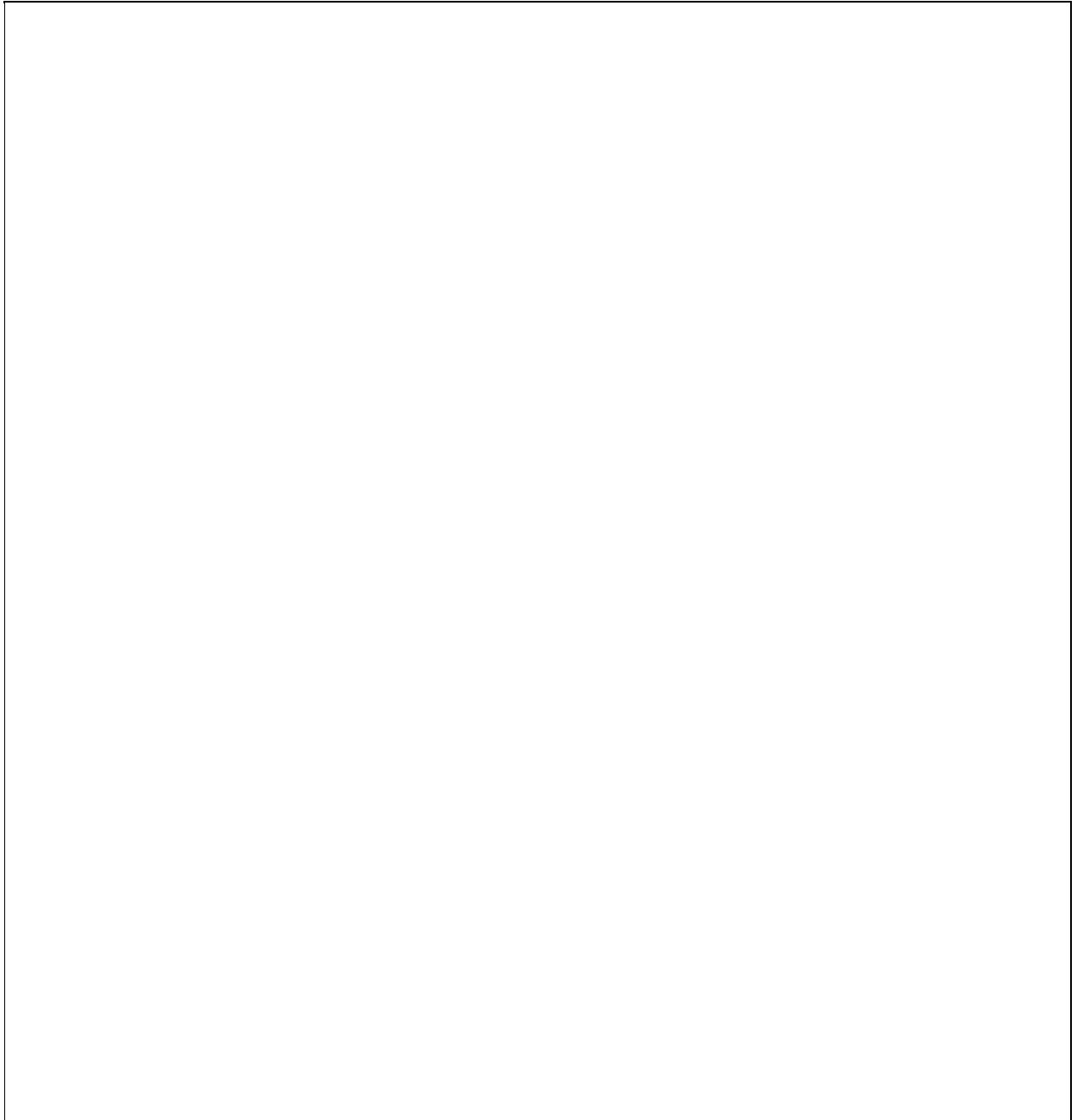


5. The following school staff have helped me to become more involved in my child's education.

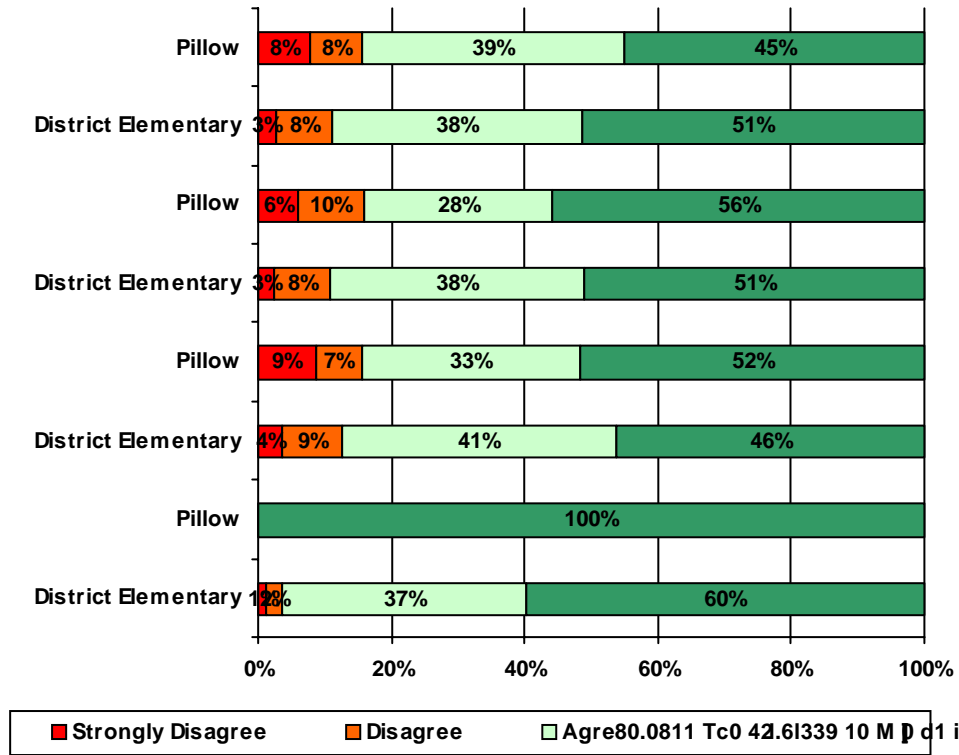


7. The following school staff treat my child fairly with respect to culture, gender, ethnicity, age, religion, and disability.

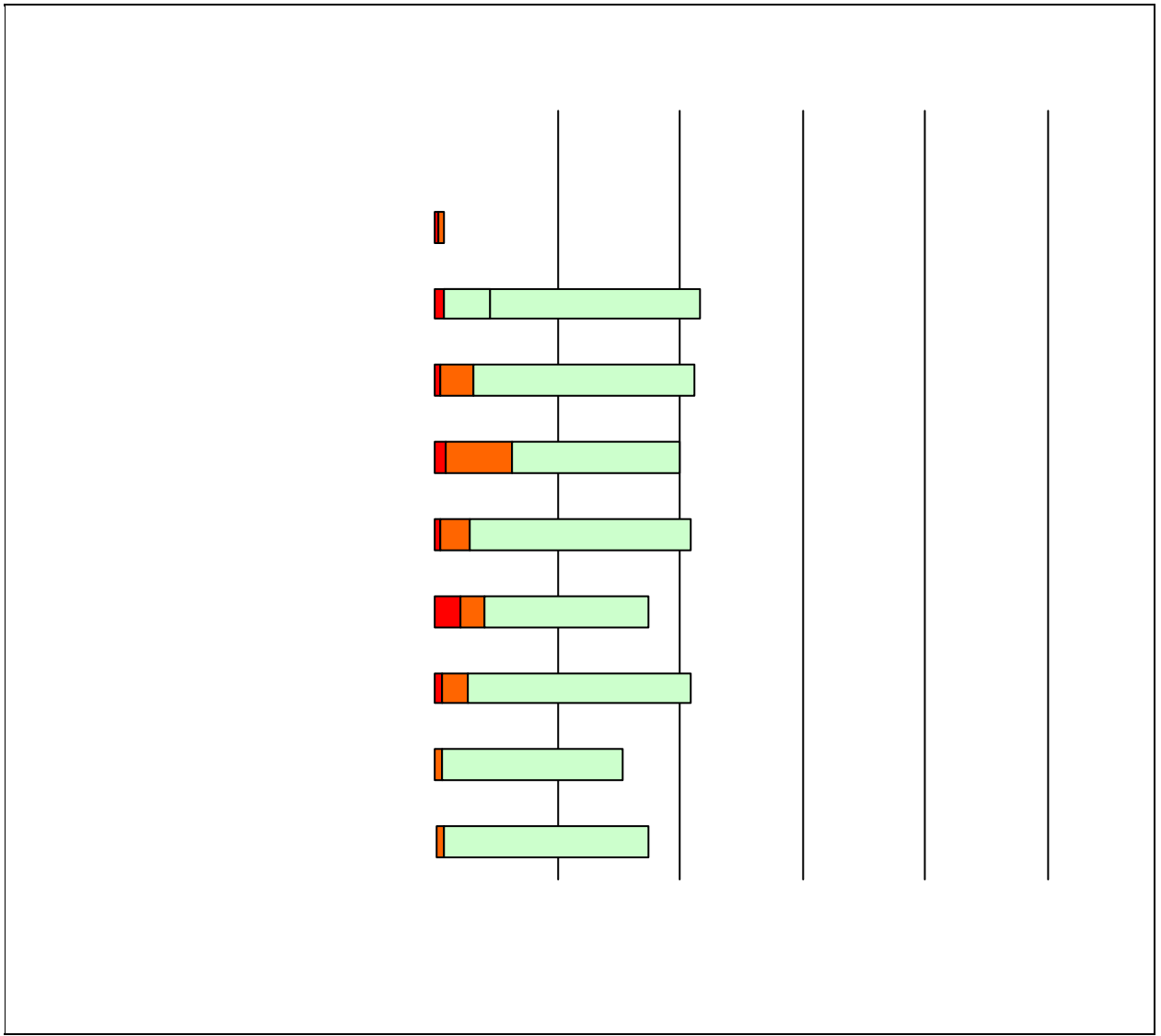




12. School staff provided me with information about the following programs :



80.0811 Tc0 42.61339 10 M p d i 351.46 427.602 5.2144 5.28



Item Response Details

Number of Pillow Elementary School Parent Responses, by Response Option

		Strongly Agree	Agree	Disagree	Strongly Disagree	Does Not Apply	Don't Know
3a.	n = 76	33	29	2	5	2	5
3b.	n = 76	42	21	0	0	3	10
3c.	n = 74	33	23	1	1	6	10
3d.	n = 78	42	30	0	0	2	4
3e.	n = 78	52	25	1	0	0	0
4a.	n = 74	20	20	4	4	11	15
4b.	n = 72	28	17	1	1	9	16
4c.	n = 72	25	21	2	1	11	12
4d.	n = 75	28	29	1	0	10	7
4e.	n = 78	53	21	1	0	0	3
5a.	n = 70	19	11	6	5	16	13
5b.	n = 67	22	15	4	0	12	14
5c.	n = 70	24	14	3	1	15	13
5d.	n = 72	21	20	3	0	19	9
5e.	n = 79	57	18	0	0	3	1
6a.	n = 72	19	16	1	4	11	21
6b.	n = 70	24	14	2	0	9	21
6c.	n = 71	23	14	2	1	12	19
6d.	n = 71	23	14	1	0	16	17
6e.	n = 75	47	15	1	0	5	7
7a.	n = 76	35	20	1	3	0	17
7b.	n = 73	39	14	0	0	1	19
7c.	n = 70	37	11	1	1	2	18
7d.	n = 74	43	20	0	0	0	11
7e.	n = 78	58	16	0	0	0	4
*8.	n = 74	24	19	10	3	2	7
9.	n = 78	43	32	1	1	0	1
10.	n = 73	8	8	13	7	2	35

Number of Pillow Elementary School Parent Responses, by Response Option (Continued)

		Strongly Agree	Agree	Disagree	Strongly Disagree	Does Not Apply	Don't Know
11a.	n = 71	31	26	2	1	7	4
11b.	n = 74	42	30	0	1	0	1
11c.	n = 72	39	28	1	0	0	4
11d.	n = 71	38	32	0	0	0	1
11e.	n = 73	26	22	6	2	10	7
11f.	n = 72	33	27	3	2	1	6
11g.	n = 73	36	33	2	0	0	2
12a.	n = 69	23	20	4	4	15	3
12b.	n = 72	28	14	5	3	17	5
12c.	n = 72	30	19	4	5	6	8
12d.	n = 69	3	0	0	0	0	3
13a.	n = 73	53	20	0	0	0	0
13b.	n = 72	38	23	5	1	0	5
13c.	n = 72	33	15	6	1	12	5
13d.	n = 72	32	13	2	2	16	7
13e.	n = 76	52	22	1	0	0	1

*This item included an additional response option, 'I am not aware of AISD's academic benchmark testing.' An additional 9 parents selected this option.