

17.6%

12.2%



2006-2007 AISD Parent Survey Results

0.8%

27.7%

22.4%

The following report contains the results of the 2006-2007 AISD Parent Survey for your campus and all AISD schools at your level. The first section of this report provides a comparison of the campus demographics and the demographics reported by parents who responded to the survey from your campus. The next section describes the percentages of parents selecting specific responses for each survey item, and the final section indicates the actual number of parents who selected each response option. Campus survey results should be examined for areas of strength and opportunities for improvement. Results for all AISD schools

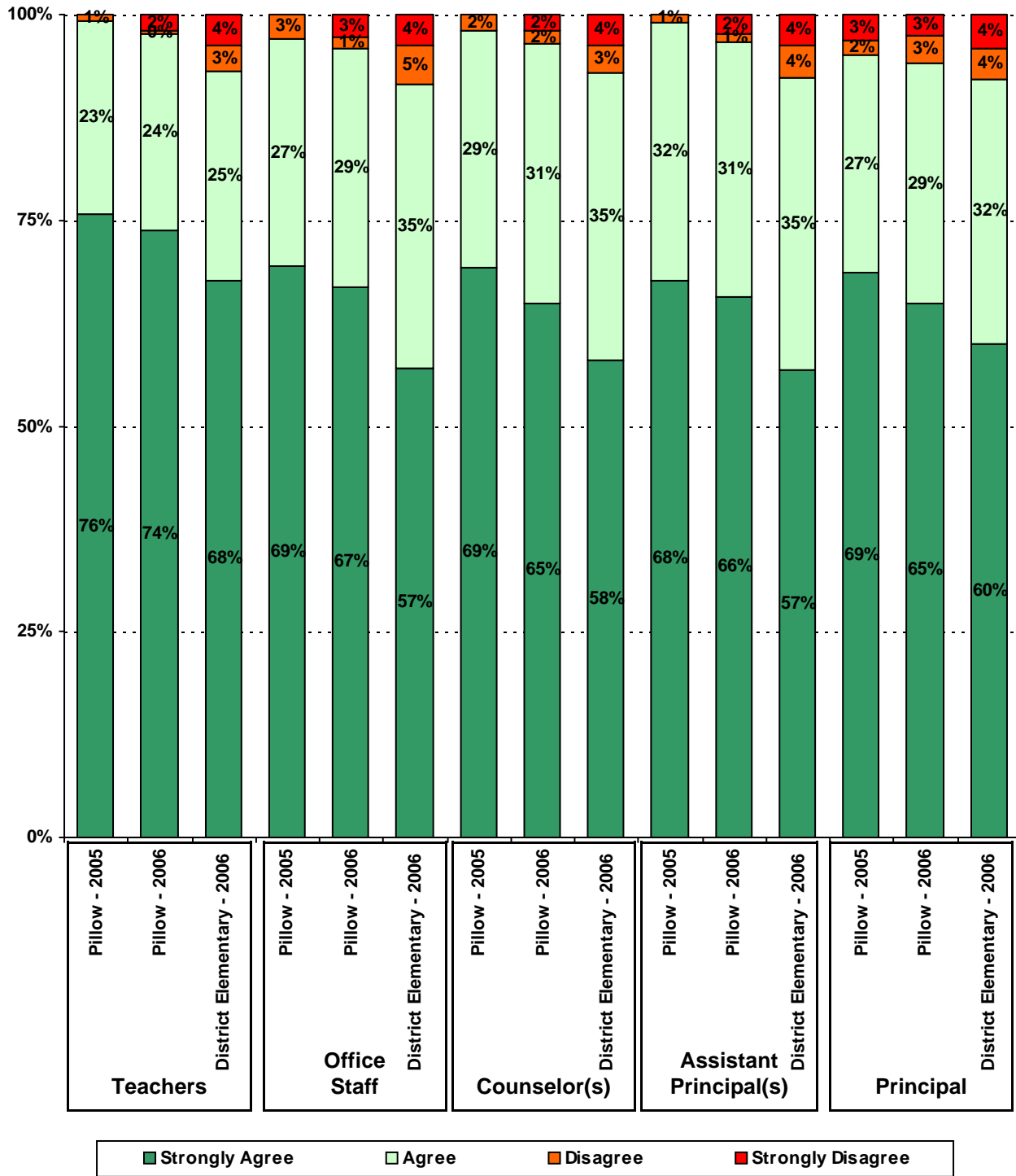
How many parents responded to the survey in 2005-2006 and 2006-2007, and how does this compare to the number of students in the population each year?

	Campus	District EL	District MS	District HS
	143			
	516			
	<i>27.7%</i>			
	266			
	523			
	<i>50.9%</i>			

What did parents report as their child's ethnicity, and how does this compare to the ethnic distribution of the student population?



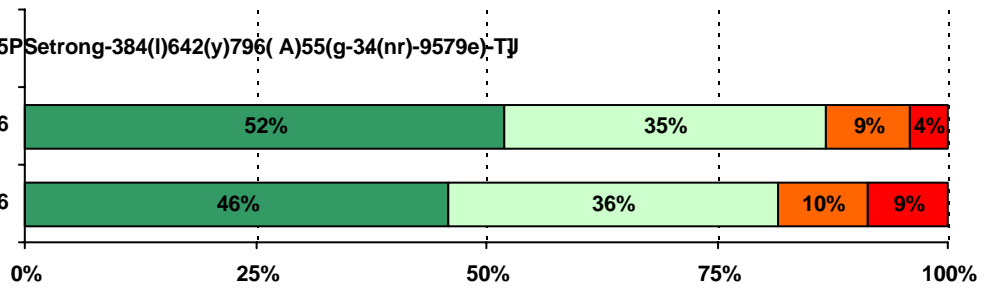
5. The following school staff treat me with courtesy and respect.

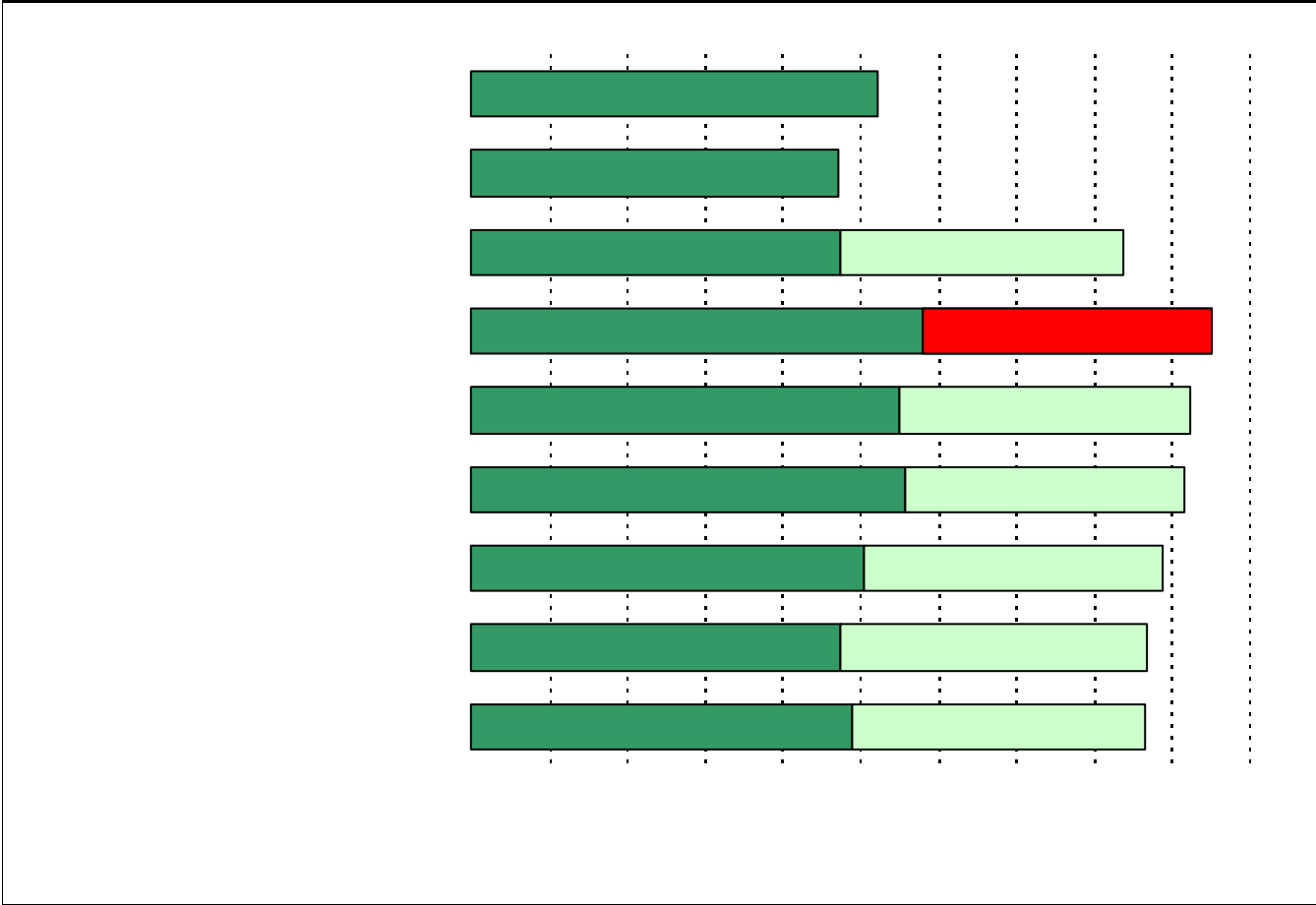


Pillow - 2005P
Setrong-384(l)642(y)796(A)55(g-34(nr)-9579e)-TJ

Pillow - 2006

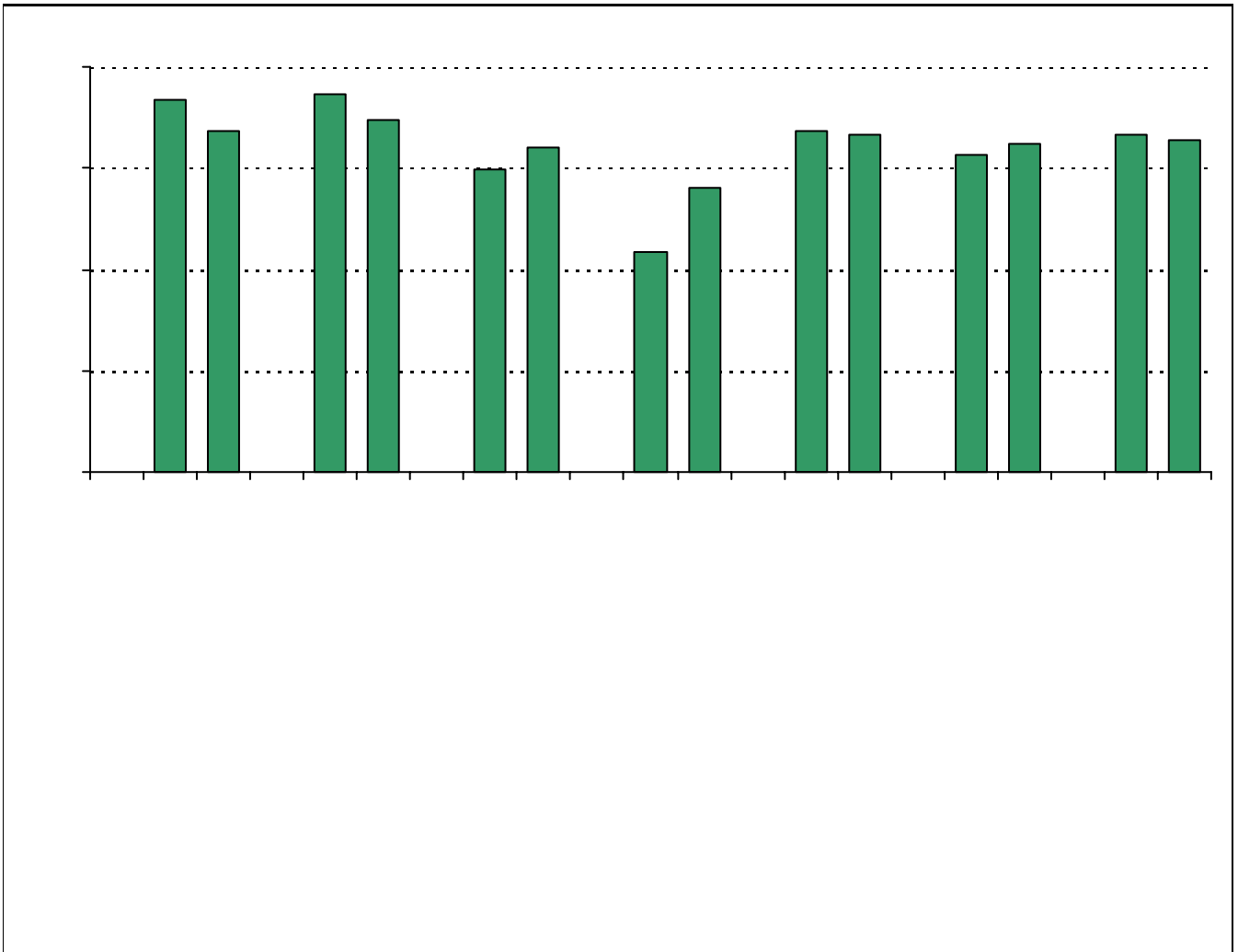
District Elementary - 2006





**Required
curriculum**





* Item(s) #17, #18, #19 added to the survey in 2006



Number of Pillow Elementary School Parent Responses, by Response Option
(Continued)

		Strongly Agree	Agree	Disagree	Strongly Disagree	Don't Know/NA
13a.	n = 263	158	92	5	5	3
13b.	n = 256	139	102	8	4	3
13c.	n = 254	121	88	18	6	21
14a.	n = 262	104	87	20	9	42
14b.	n = 258	137	93	11	8	9
14c.	n = 251	108	89	23	7	24
15a.	n = 263	169	76	9	6	3
15b.	n = 256	132	72	11	7	34
15c.	n = 252	121	69	14	6	42
15d.	n = 254	127	73	11	8	35
15e.	n = 256	167	75	2	6	6
16a.	n = 254	31	22	22	9	170
16b.	n = 249	31	18	21	9	170
16c.	n = 249	31	17	23	9	169
16d.	n = 247	32	14	23	9	169
16e.	n = 247	31	12	23	10	171
17.	n = 260	144	55	16	11	34
18.	n = 260	194	50	7	6	3
		Yes	No			
19a.	n = 248	210	38			
19b.	n = 258	235	23			
19c.	n = 239	164	75			
19d.	n = 240	107	133			
19e.	n = 237	171	66			
19f.	n = 240	145	87			
19g.	n = 240	171	69			
20.	n = 266	<i>Item 20 did not use the "Strongly Agree" to "Strongly Disagree" scale. Numbers below reflect the number of parents selecting each goal. These numbers will not sum to the total number of item respondents because parents may select multiple goals.</i>				
		High School diploma	Certificate/ Associates degree	Bachelors degree	Graduate/ Professional degree	Military service
		241	74	224	166	19