



2004-2005 AISD Parent Survey Results

Pleasant Hill Elementary School

The following report contains the results of the 2004-2005 AISD Parent Survey for your campus and all AISD schools across the district. Each response option was selected by a certain percentage of parents. Campus survey results should be examined for areas of strength and opportunities for improvement. Results for all AISD schools at your level are presented to provide a reference for comparison.

How many parents responded to the survey in 2003-2004 and 2004-2005, and how does this compare to the number of students in the population each year?

	Campus	District EL	District MS	District HS
# of Parents Responding in 2003-2004	301	16,070	2,721	1,640
# of Students in 2003-2004	541	42,594	15,819	19,847
<i>Ratio of Parent Respondents to Students, 2003-04</i>	55.6%	37.7 %	17.2 %	8.3 %
# of Parents Responding in 2004-2005	165	12,137	2,007	2,700
# of Students in 2004-2005	603	43,566	15,705	19,976
<i>Ratio of Parent Respondents to Students in 2004-05</i>	27.4%	27.9 %	12.8 %	13.5 %

Note: The ratio of parent respondents to students is listed above as a percentage for ease of interpretation; however, it is the number of parents who responded per 100 students enrolled.

What did parents report as their child's ethnicity, and how does this compare to the ethnic distribution of the student population?

Ethnicity	% of Students, as Reported by Parent Respondents	% of Students in Campus Population
African American	3.4%	7.1%
Asian	0.7%	0.3%
Hispanic	85.0%	80.1%
Native American	0.0%	0.2%
White	10.9%	12.3%

What did parents report as their child's grade, and how does this compare to the grade level distribution of the student population?

Grade	% of Students, as Reported by Parent Respondents	% of Students in Campus Population
EC	0.6%	2.0%
PK	14.1%	12.3%
K	12.8%	14.8%
1st	16.0%	20.4%
2nd	14.1%	12.9%
3rd	14.7%	12.9%
4th	17.9%	14.3%
5th	9.6%	10.4%
6th	N/A	N/A

Note: Student population data are based on Fall 2003 and Fall 2004 PEIMS data submitted by the district to TEA, and may differ from the official AEIS report.

2004-2005 AISD Parent Survey Item Responses

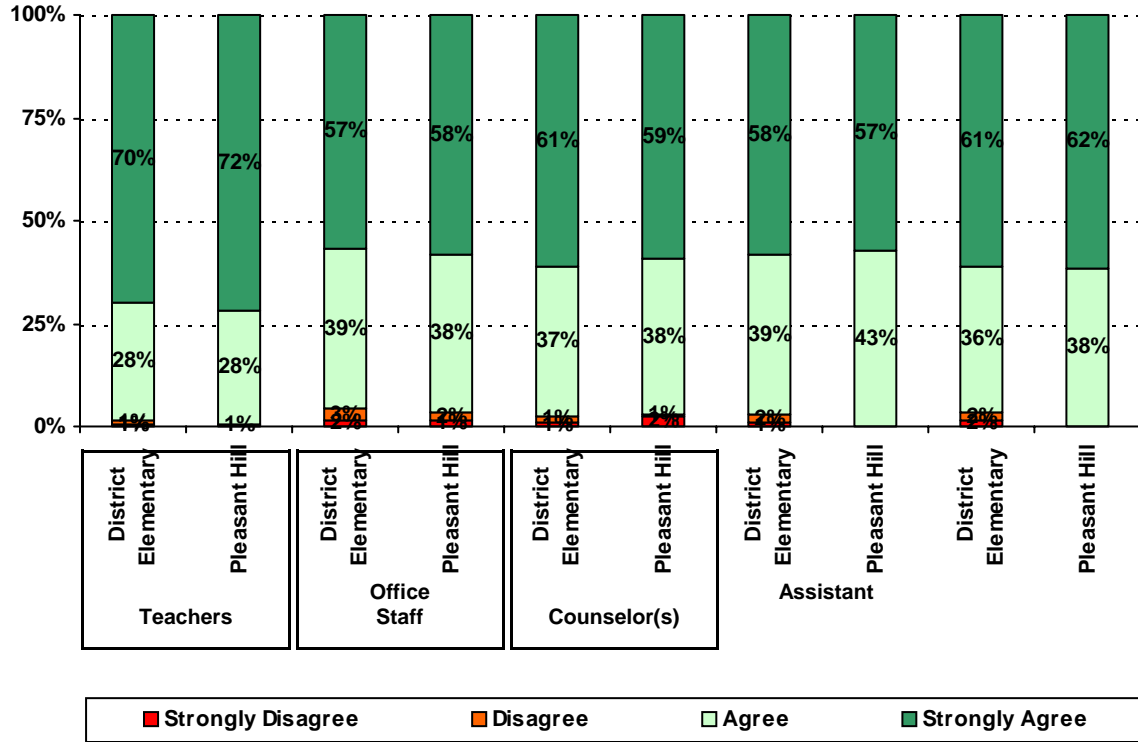
Each survey item is presented below, followed by a bar graph containing results for your campus and for all campuses at your level.

Please examine the results below to determine areas of strength and opportunities for improvement. Large percentages of "Strongly Agree" and "Agree" indicate areas in which your campus staff excel, and large percentages of "Disagree" and "Strongly Disagree" indicate areas for possible improvement.

In addition, please compare the percentage of parents from your campus selecting each response option with the percentage of all AISD parents selecting each response option. If your campus percentages are very different from the percentages reported districtwide, please consider potential reasons for discrepancies.

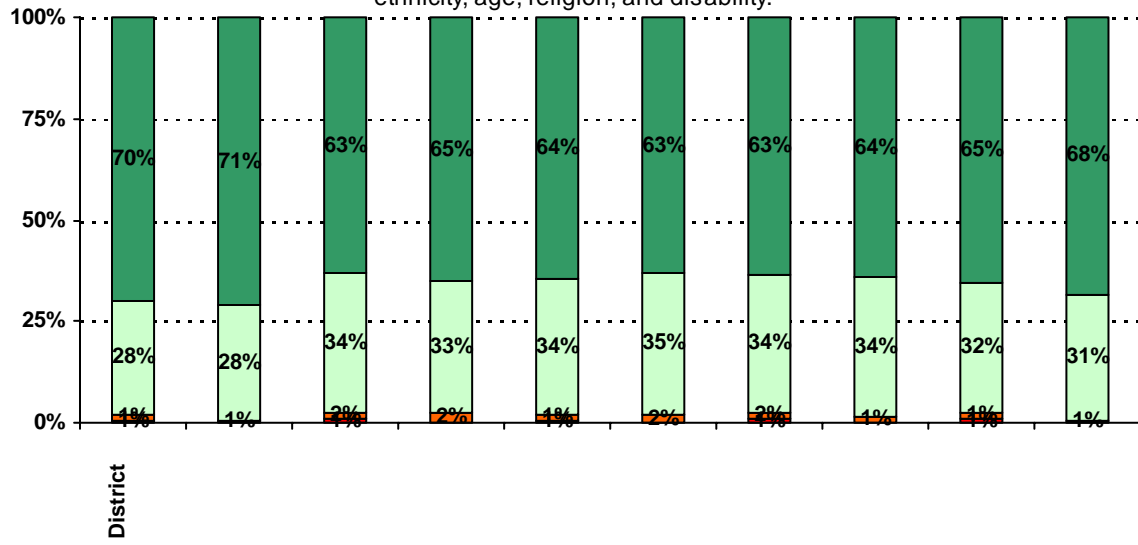
Please also review the results below for staff categories with consistently positive or negative responses. These responses may be used to identify opportunities for praise and areas for professional development.

3. The following school staff treat me with courtesy and respect.



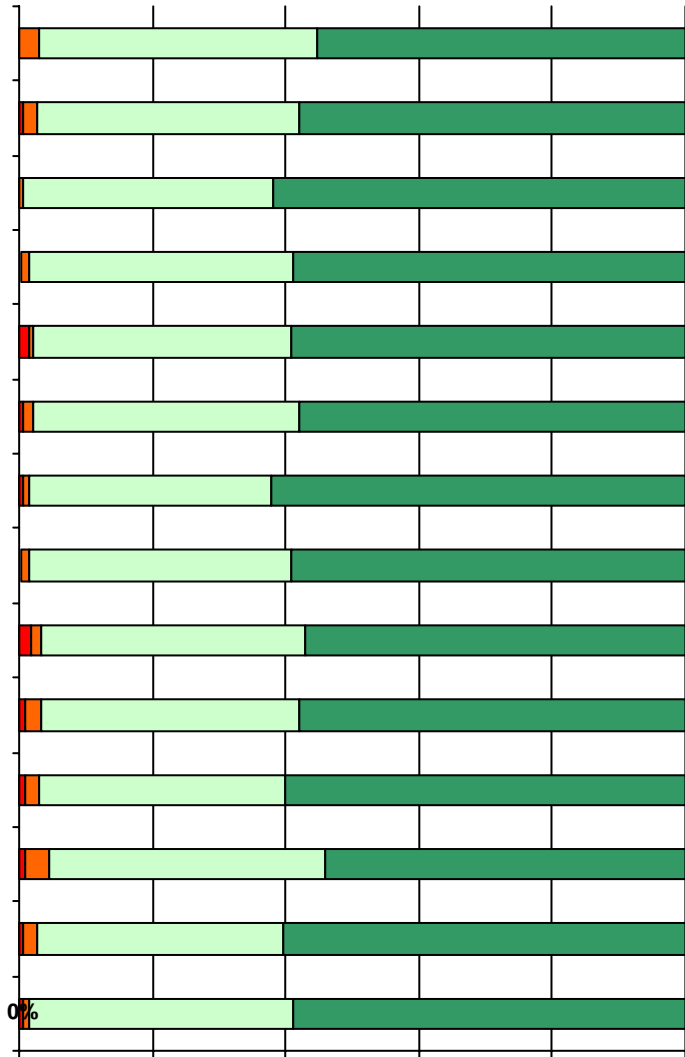
A rectangular box with a solid black border. Inside the box, there are four horizontal dashed lines, evenly spaced, intended for writing text.

7. The following school staff treat my child fairly with respect to culture, gender, ethnicity, age, religion, and disability.

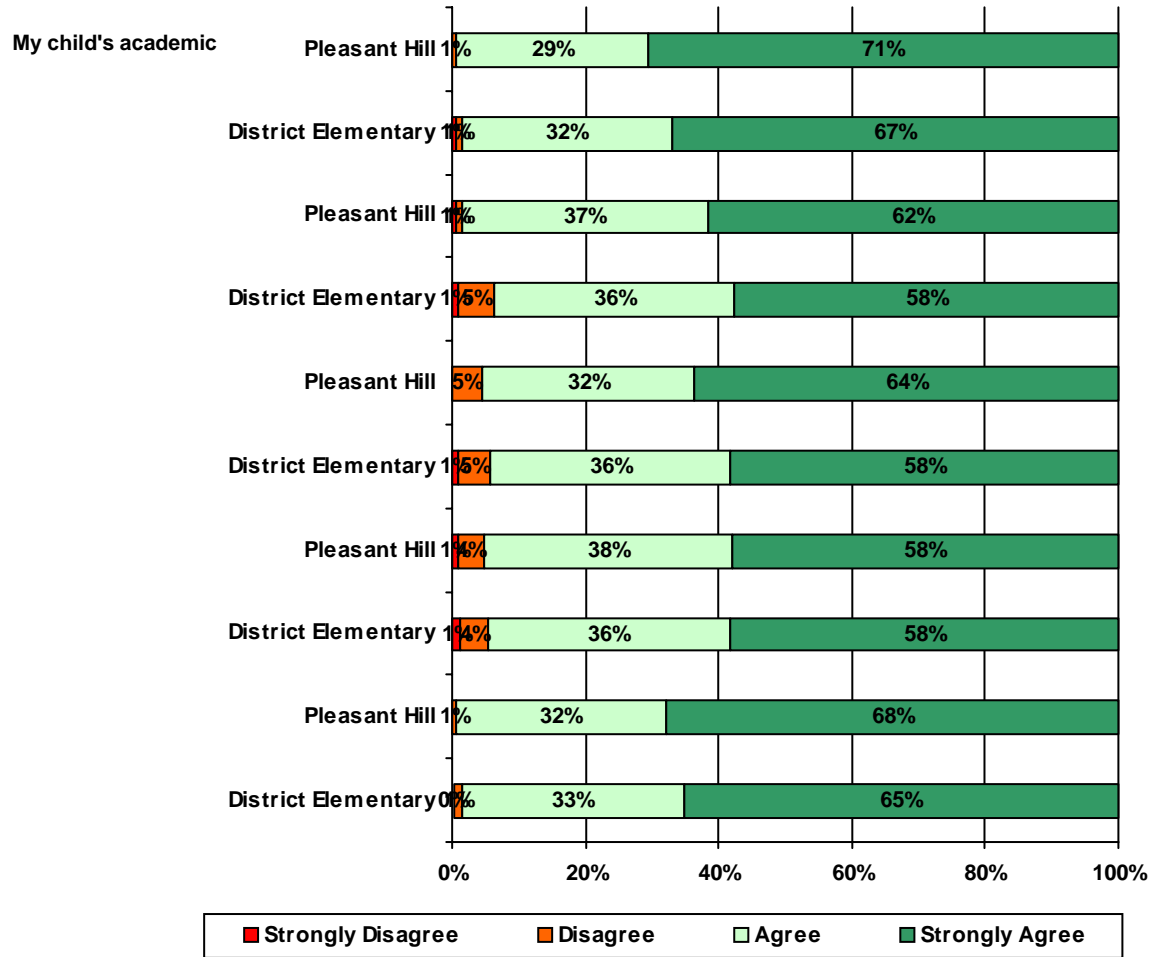


masa955.80.1(3 (0)Hr)16%

11. School staff provided me with information about the following school and district policies:



13. School staff provided me with the following information about my child:



Item Response Details

Number of Pleasant Hill Elementary School Parent Responses, by Response Option

		Strongly Agree	Agree	Disagree	Strongly Disagree	Does Not Apply	Don't Know
3a.	n = 158	94	58	0	0	3	3
3b.	n = 157	81	60	0	0	4	12
3c.	n = 157	79	50	1	3	5	19
3d.	n = 156	88	58	3	2	2	3
3e.	n = 161	114	44	1	0	2	0
4a.	n = 155	88	51	2	0	9	5
4b.	n = 152	70	57	2	0	9	14
4c.	n = 151	67	50	3	1	10	20
4d.	n = 156	77	54	2	2	10	11
4e.	n = 159	115	40	0	1	2	1
5a.	n = 147	79	51	4	0	8	5
5b.	n = 145	61	58	3	0	11	12
5c.	n = 144	65	43	6	2	13	15
5d.	n = 148	62	53	3	2	18	10
5e.	n = 163	127	30	1	0	4	1
6a.	n = 150	79	47	3	1	9	11
6b.	n = 142	59	52	3	1	11	16
6c.	n = 142	60	43	5	3	13	18
6d.	n = 144	61	43	4	2	16	18
6e.	n = 153	102	37	3	0	7	4
7a.	n = 152	99	45	1	0	3	4
7b.	n = 150	88	47	2	0	4	9
7c.	n = 151	86	47	3	0	5	10
7d.	n = 152	87	44	3	0	5	13
7e.	n = 155	108	43	0	1	2	1
*8.	n = 135	52	38	6	9	6	6
9.	n = 156	90	58	5	1	2	0
10.	n = 145	32	32	6	4	3	68

11a.	n = 144	73	55	4	0	10	2
11b.	n = 150	91	55	1	0	2	1
11c.	n = 151	87	57	1	2	2	2
11d.	n = 147	89	52	1	1	2	2
11e.	n = 145	69	48	2	2	16	8
11f.	n = 143	80	49	3	1	2	8
11g.	n = 148	87	53	3	1	0	4
<hr/>							
12a.	n = 149	61	36	10	1	25	16
12b.	n = 149	59	38	7	2	29	14
12c.	n = 144	57	44	10	2	12	19
5		27	10	1	1	0	5
<hr/>							

*This item included an additional response option, 'I am not aware of AISD's academic benchmark testing.' An additional 18 parents selected this option.