

2006-2007 AISD Parent Survey Results

Lucy Read Elementary School

The following report contains the results of the 2006-2007 AISD Parent Survey for your campus and all AISD schools at your level. The first section of this report provides a comparison of the campus demographics and the demographics reported by parents who responded to the survey from your campus. The next section describes the percentages of parents selecting specific responses for each survey item, and the final section indicates the actual number of parents who selected each response option. Campus survey results should be examined for areas of strength and opportunities for improvement. Results for all AISD schools at your

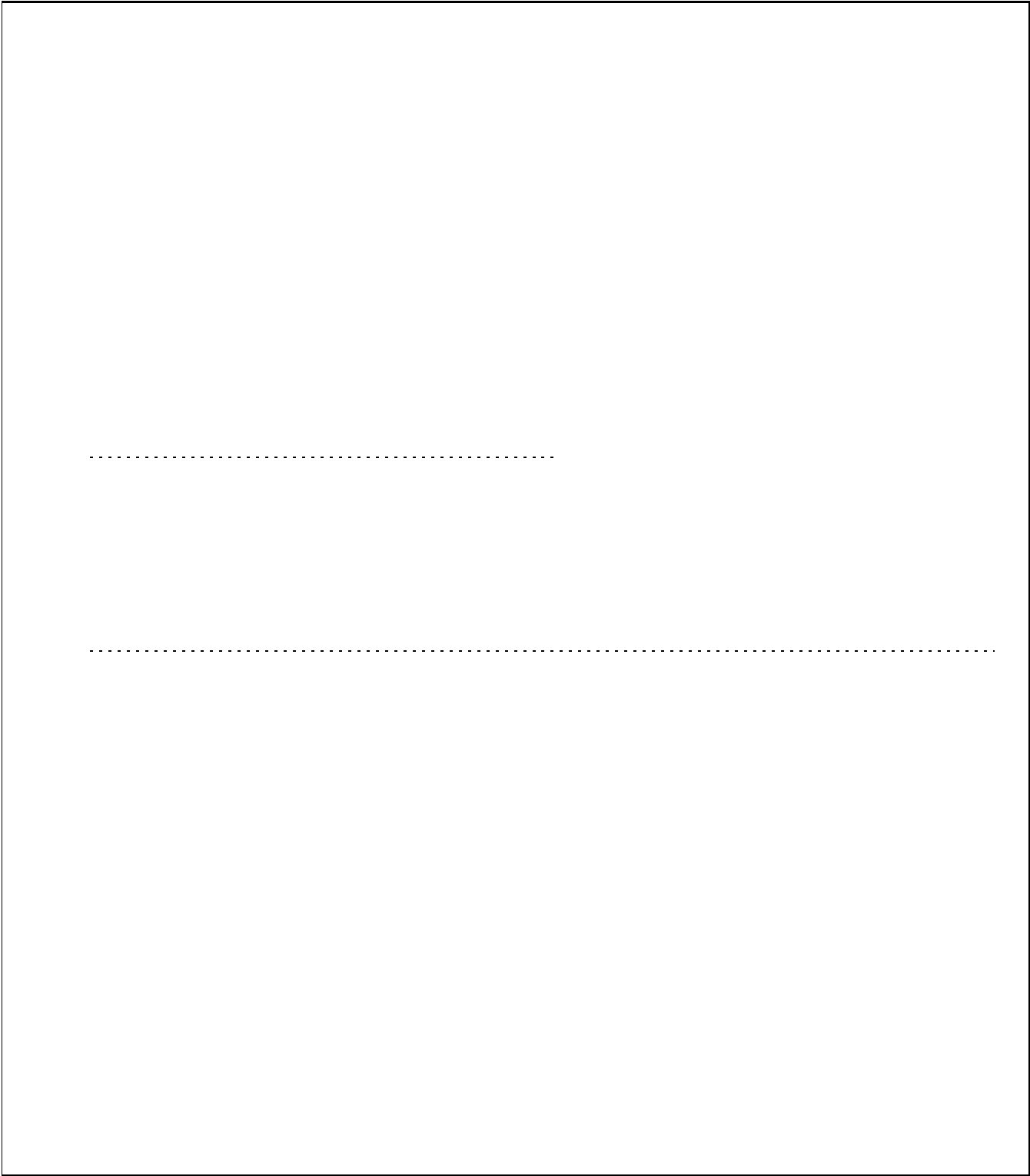
What did parents report as their child's grade, and how does this compare to the grade level distribution of the student population?

Grade	% of Students, as Reported by Campus Parent Respondents	% of Students in Campus Population
EC	0%	2%
PK	100%	98%

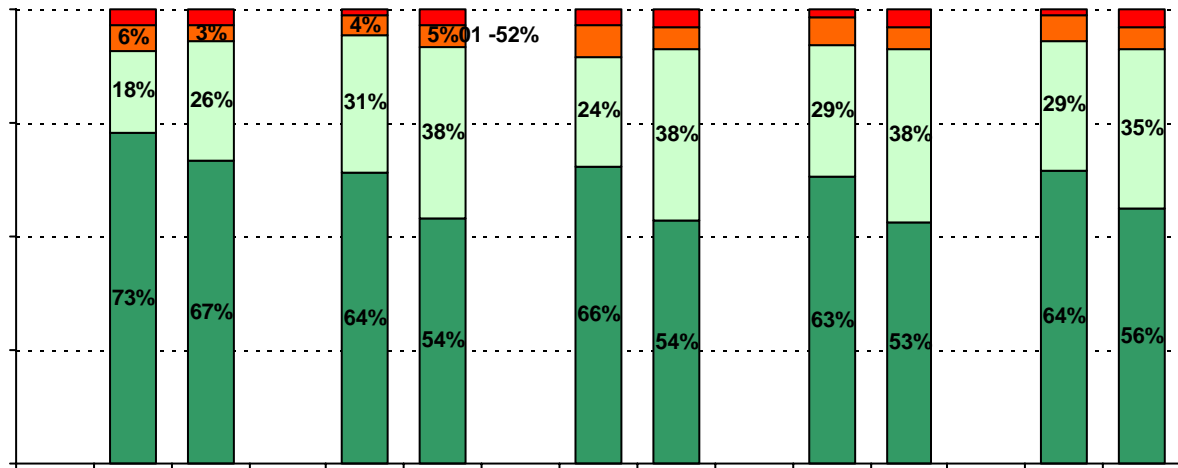
Note: Student population data are based on Fall PEIMS data submitted by the district to TEA, and may differ from the official AEIS report.

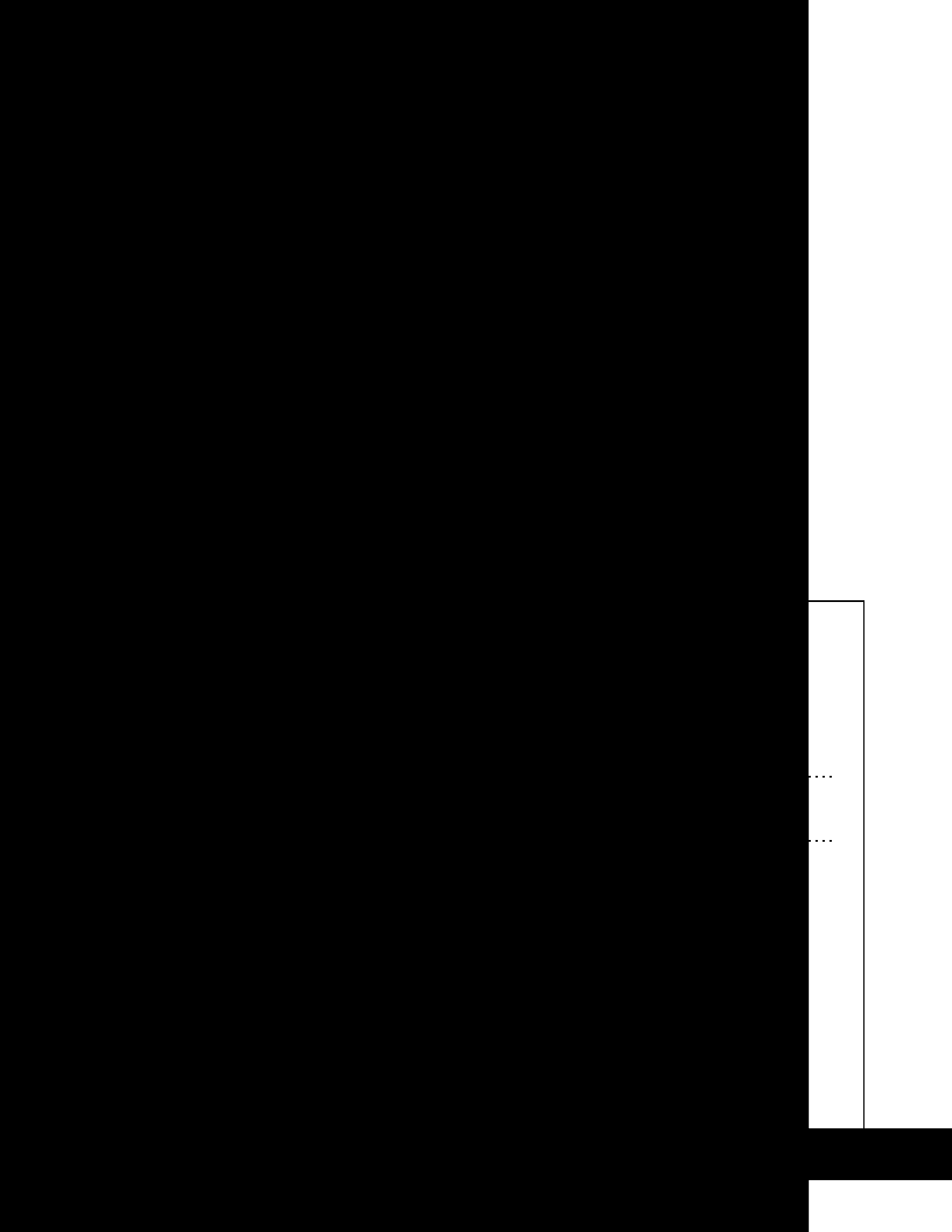
USING THE RESULTS OF THE AISD PARENT SURVEY

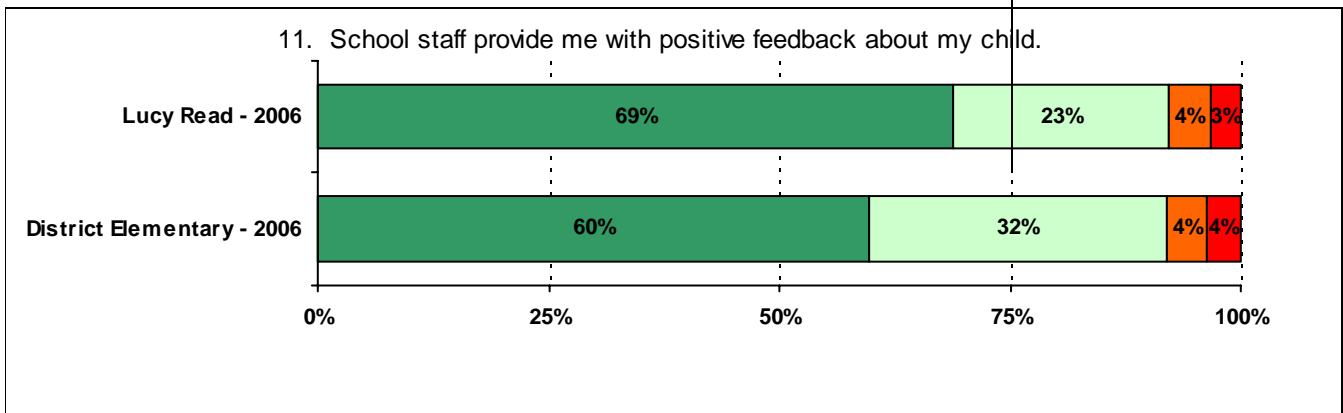
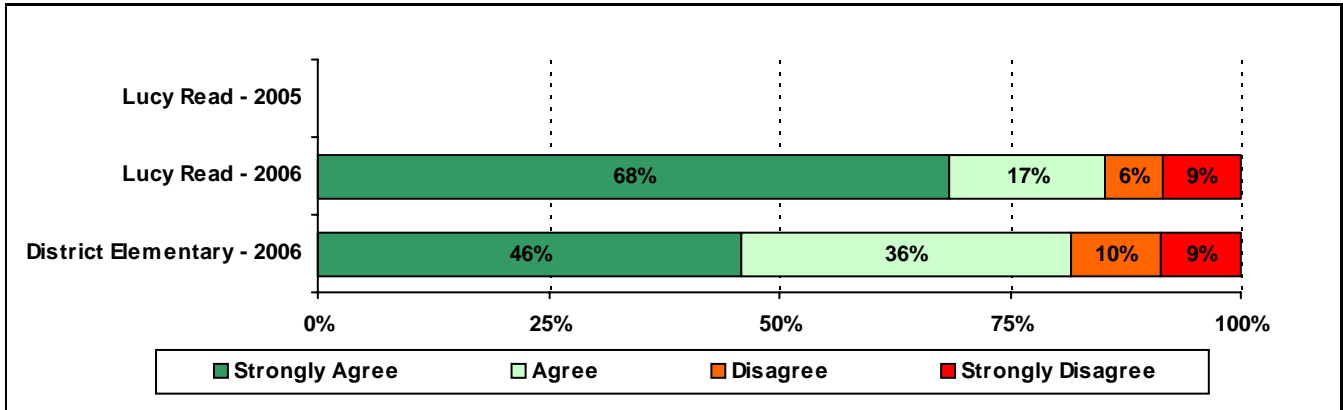
Each survey item is presented below, followed by a bar graph containing your school's results. If you are a member of the AISD Parent Survey, you will see the results of the survey. (Page 7 of 7)

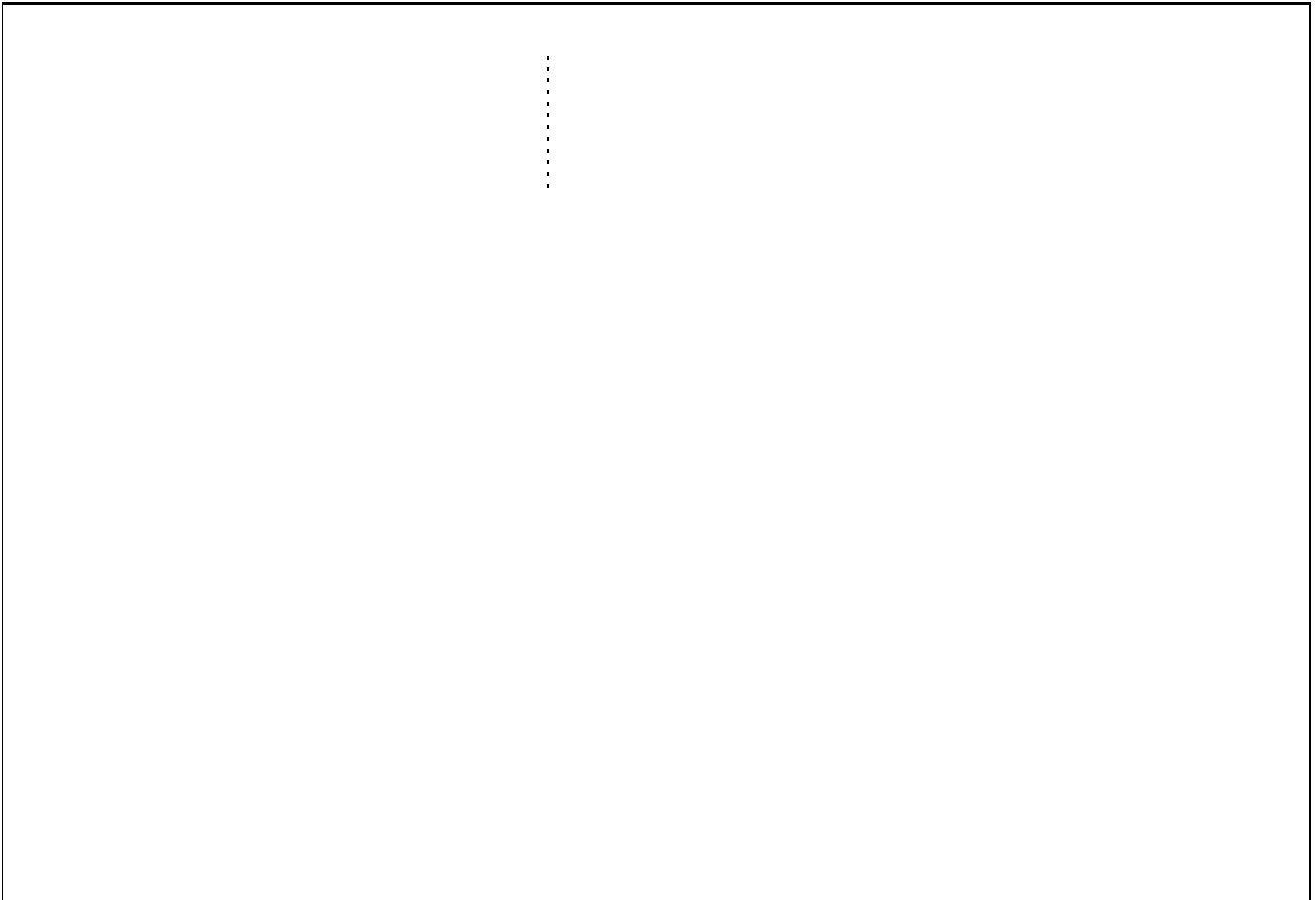


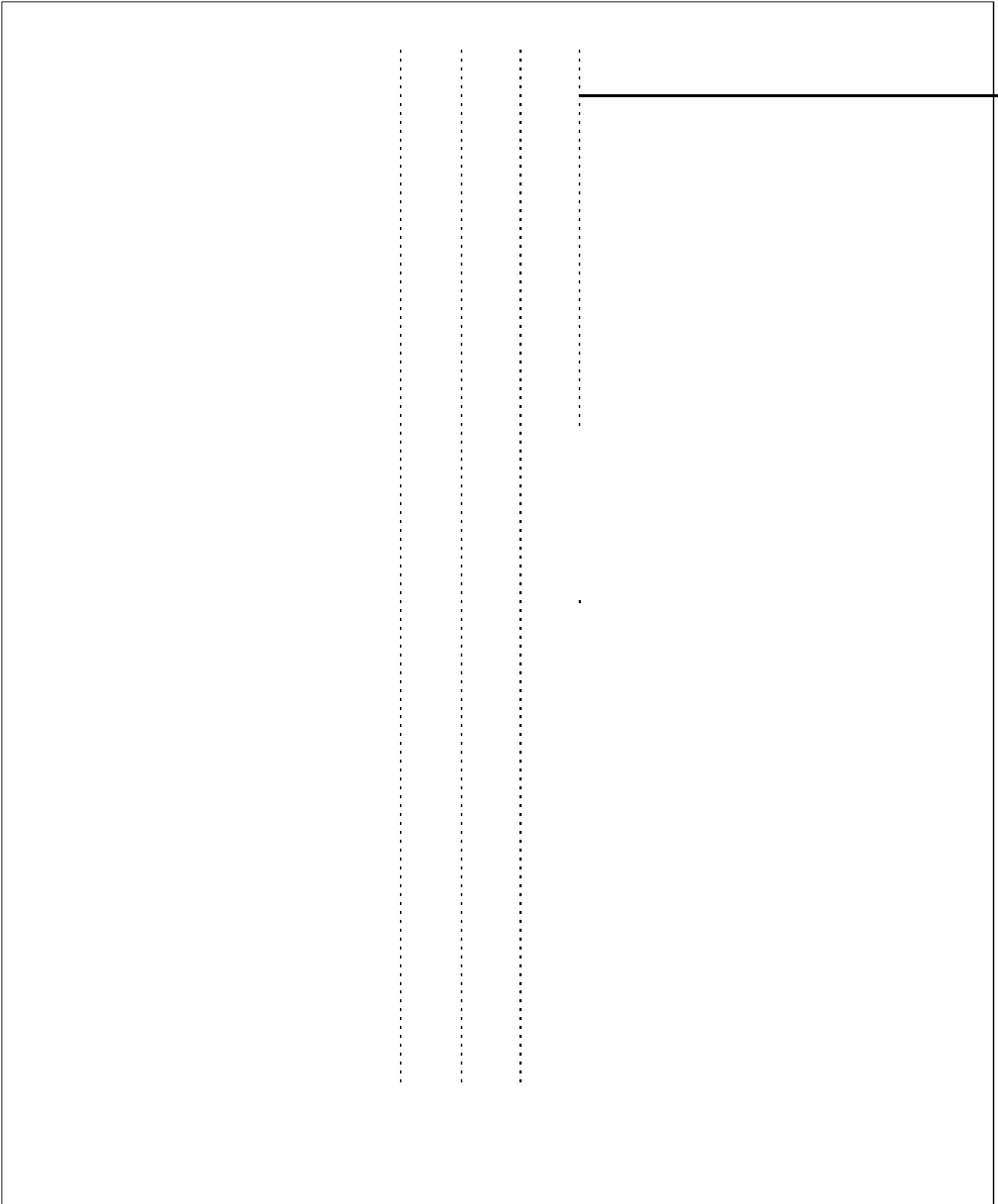
6. The following school staff provide me with opportunities for two-way communication.





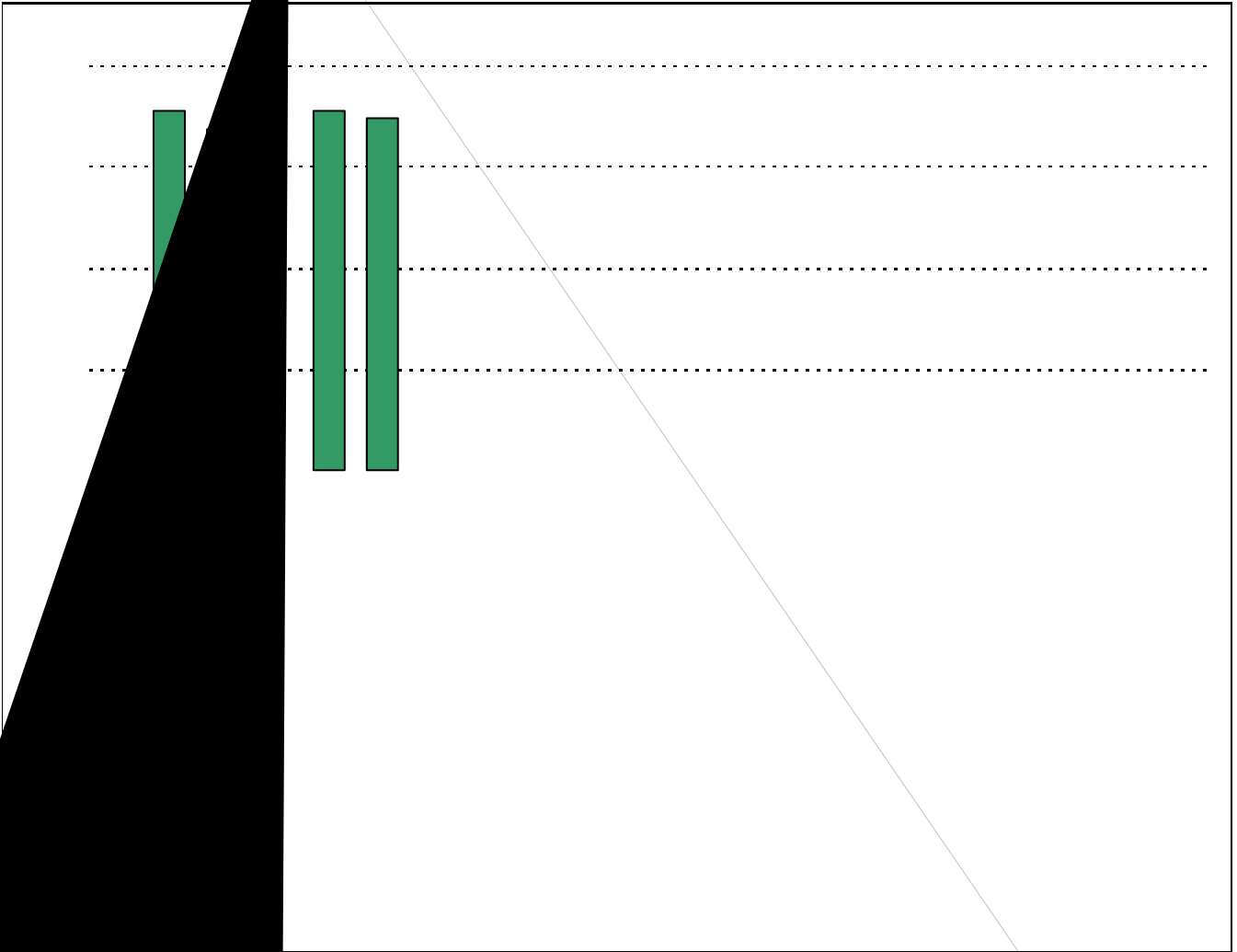




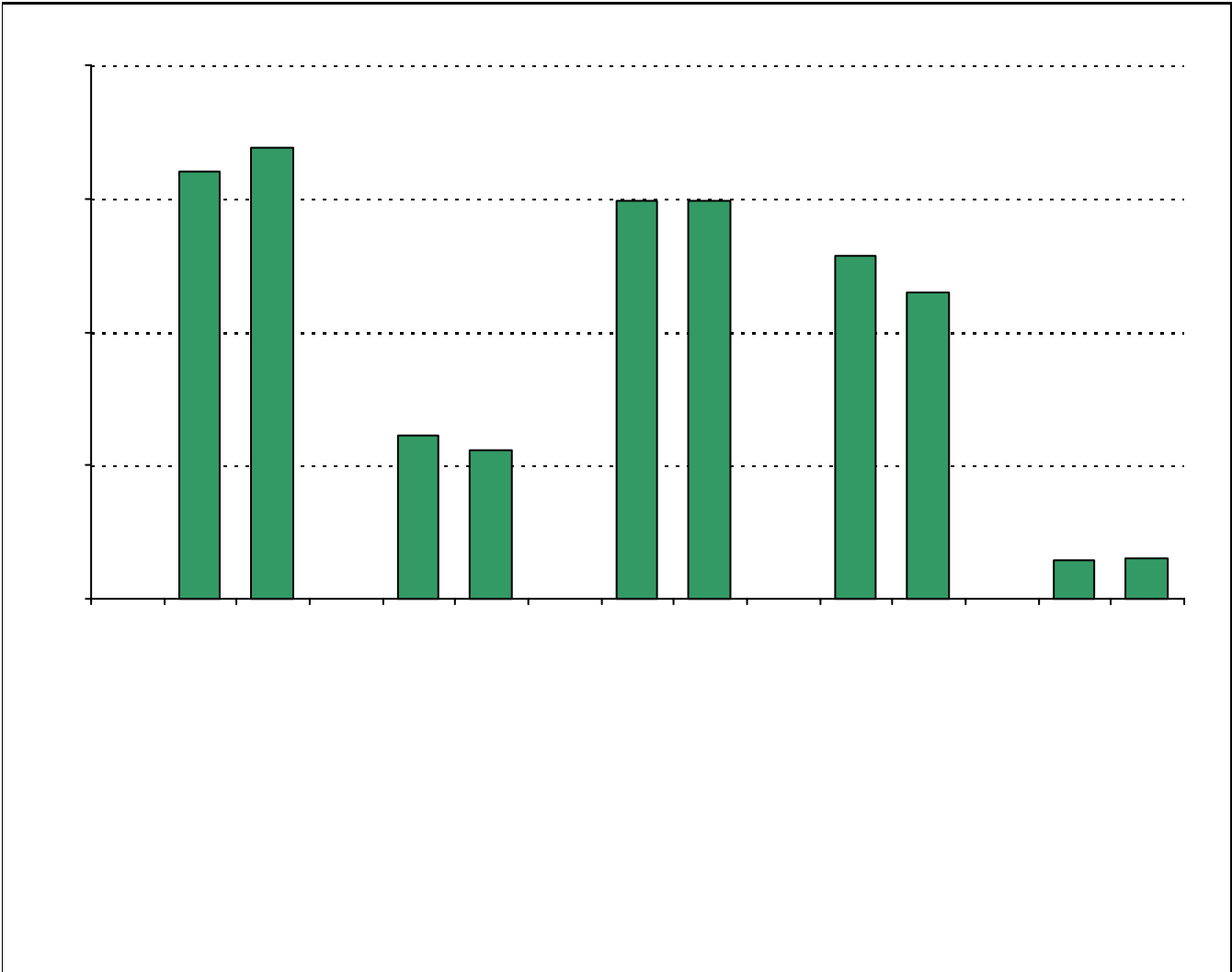


|





the survey in 2006



Item Response Details

Number of Lucy Read Parent Responses, by Response Option

		Strongly Agree	Agree	Disagree	Strongly Disagree	Don't Know/NA
3a.	n = 88	57	20	4	2	5
3b.	n = 80	45	22	5	1	7
3c.	n = 78	37	19	2	3	17
3d.	n = 84	52	25	4	1	2
3e.	n = 92	66	17	4	4	1
6a.	n = 79	47	21	4	1	6
6b.	n = 76	41	19	4	1	11
6c.	n = 77	38	14	4	2	19
6d.	n = 80	46	22	3	1	8
6e.	n = 90	64	16	5	3	2
7a.	n = 76	40	24	2	4	6
7b.	n = 69	36	20	1	3	9
7c.	n = 71	34	16	2	3	16
		34	19	3	3	9

13a. n = 87